



Insecurity in the Lake Chad Basin – Regional Impact

Situation Report #16

30 July 2016

In Numbers

40,000 newly displaced people in need of humanitarian assistance in Logone and Chari, Cameroon.

4.4 million people in food insecurity in Borno and Yobe and Adamawa, Nigeria.

4 countries affected

USD 334 million required for life-saving assistance in Lake Chad Basin.

Highlights

- Demerger of Boko Haram group and increase of terrorist attacks against militaries and civilians in the Lake Chad.
- WFP provided food assistance to 25,000 IDP population in Banki and is targeting 205,000 people with in-kind food in seven locations in Borno State
- 476,000 people in need of humanitarian assistance targeted through cash-based-transfer in northeast of Nigeria.

People assisted July 2016



Beneficiary Feedback and Complaint Mechanism (BFCM) successfully implemented for emergency operations in Nigeria, Cameroon and Chad.

Situation Update

- In **Nigeria**, Boko Haram (BH) is facing a split within its movement. A new Emir, Abu Musab Al-Barnawi was presented by media as the leader of a new faction. The current group's leader, Abu Bakr Shekau, stated that he remains the auto-proclaimed Emir of the *Jamaatu ahlis sunnah lidda awati wal jihad* faction.
- On 28 July, a humanitarian convoy traveling from Bama to Maiduguri in Borno State, Nigeria, was attacked by unknown assailants. A UNICEF employee and an IOM contractor were injured. Following the

attack, the UN agencies, including WFP temporarily suspended humanitarian assistance missions by road in north-eastern Nigeria.

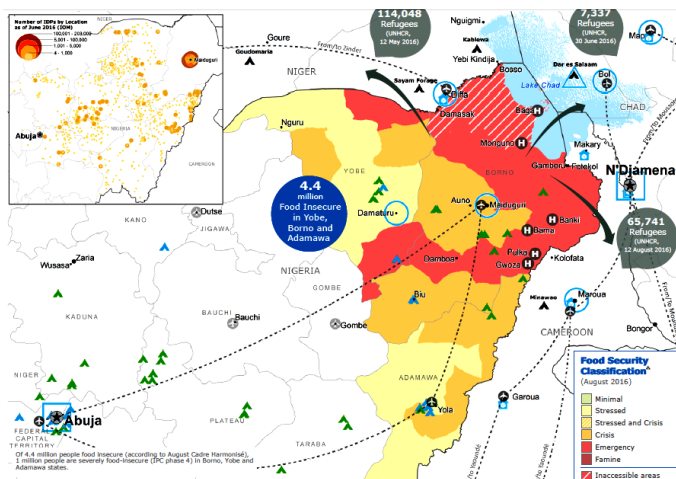
- On 12 July, a convoy of three Nigerian army vehicles were ambushed by suspected Boko Haram elements on the Bosso-Diffa axis, **Niger** and a Nigerian military was killed. On 31 July, unidentified armed men attacked three localities in the Lake Chad border and killed 97 civilians.
- In **Chad**, the state of Emergency has been extended until October 2016 and access to displaced sites west of Baga-Sola and Liwa axis close to the border with Niger remains difficult given the insecurity.
- New population displacements were reported in Djounde and Meme in the Mayo-Sava department, **Cameroon**, following escalating attacks. The number of IDPs in need of humanitarian assistance has significantly exceeded WFP planning figures.
- UN agencies in Cameroon submitted a joint CERF appeal to support the scale-up of humanitarian assistance to some 40,000 newly displaced persons in Logone and Chari department. The department hosts 60% of the total IDPs population in the Far north region and humanitarian agencies' presence has been restricted due to insecurity. In Borno State, NEMA reported over 15 new locations with approximately 300,000 IDPs in need of immediate food assistance.

WFP Response

- As of 31 July, WFP assisted approximately 128,700 people in Nigeria, under Blanket Supplementary Feeding Programme (BSFP) through CBT modalities. In Cameroon, WFP will extend food assistance to an additional 20,000 IDPs, bringing the total IDP local population targeted to 113,000 individuals. As of July, a telephone hotline is operational for all WFP assisted people in need of humanitarian assistance in Cameroon, Chad and Nigeria to channel their complaints and feedback regularly and anonymously. A first round of trainings for partners were carried out in late June in Cameroon.

Food and Nutrition Assistance

- In Chad, a total of 140,000 IDPs, 7,000 Nigerian



Insecurity in the Lake Chad Basin: Regional Impact

Photo: CBT Babagou Abdoulaye, Melea site, Lake Chad. WFP/Stephan Deutcher/Nathalie Magnien

Refugees and 26,000 children under five are in need of assistance and malnutrition rates remain high in sites north of Baga-Sola. WFP is working with partners to strengthen the **nutrition** response, including prevention and treatment of moderate acute malnutrition. In Niger, 1,894 tons of food, including nutritional supplement were distributed to 110,000 people in need of humanitarian assistance, and WFP provided a 30-day food ration to approximately 300 newly displaced persons in the Sayam Forage camp.

- Under the **BSF programme** in Nigeria, WFP is scaling up to stabilize the nutrition situation amongst 174,000 children aged 6–59 months in Borno and Yobe States. Nutrition support has been provided to more than 42,400 children under five who are at risk of malnutrition. On 25 July, WFP carried out a first round of food assistance to the newly accessible Banki town with an estimated IDP population of 25,000. WFP is targeting 205,000 IDPs in seven locations in Borno State with in-kind food assistance.

Cash-based Transfer (CBT)

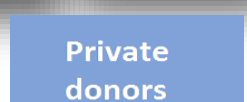
- In Old Maiduguri, as part of the integrated WFP-UNICEF nutrition programme, households of SAM children (screened at UNICEF/DFID’s supported health facilities) were enrolled into the CBT platform. The number of screened and registered children increased exponentially and is far above the planned figures provided by UNICEF. In Maiduguri, Damaturu and LGAs in Borno and Yobe states, WFP plans to target 476,000 people in need of assistance through the multi-purpose CBT. To date, WFP provided assistance via mobile-phone based cash assistance to approximately 103,000 people. Jointly

with UNICEF, WFP is implementing an integrated nutrition programme for the treatment of children with SAM, targeting 5,700 households in Maiduguri to receive food assistance through CBT.

- In Mora, Mokolo and Kousseri, Cameroon, approximately 16,000 IDPs received electronic cash transfers through WFP’s mobile money platform. Distributions in Minawao camp were carried out to 56,000 Nigerian refugees (100 percent of the planned target). WFP successfully completed the first round for CBT in five IDPs sites, targeting 8,851 people in need of food assistance. In July WFP provided cash to 1,663 households in Niger.

2015/2016 WFP Insecurity in the Lake Chad Basin donors

WFP Operations				
	Total Requirements (in USD)	Total Received (in USD)	6 Months Net Funding Requirements (in USD)	People Reached (current distribution cycle)
Regional EMOP 200777 01.01.2015– 31.12.2015	315,215,000	109,103,000 (34.6%)	97,280,000	457,728
SO 200834 UNHAS Nigeria	18,800,000	9,000,000 (47.8%)	-	-



Contacts

Margot van der Velden

Adel Sarkozi

Regional Emergency Coordinator

For PI/media inquiries

WFP Regional Bureau, Dakar, Senegal

adel.sarkozi@wfp.org

Uniting against Poverty

