

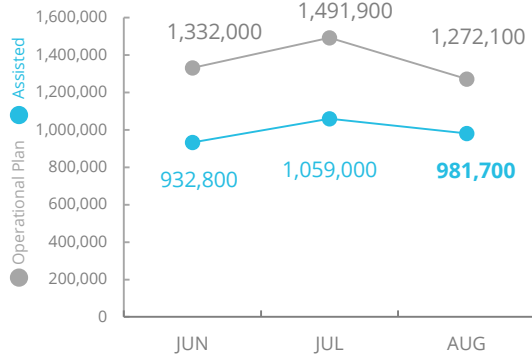


World Food Programme

Democratic Republic of Congo



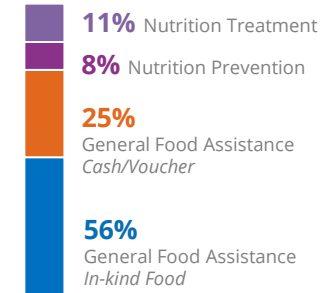
PEOPLE ASSISTED
DR Congo Interim Country Strategic Plan (ICSP)
(Activities covered by WFP L3 Emergency Response)



SOURCE: WFP, 23 SEP 2019

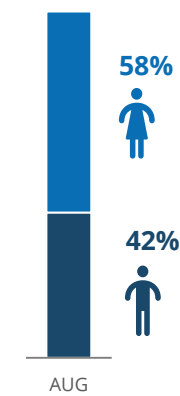


OPERATIONAL PROFILE



AUG

By Gender



AUG

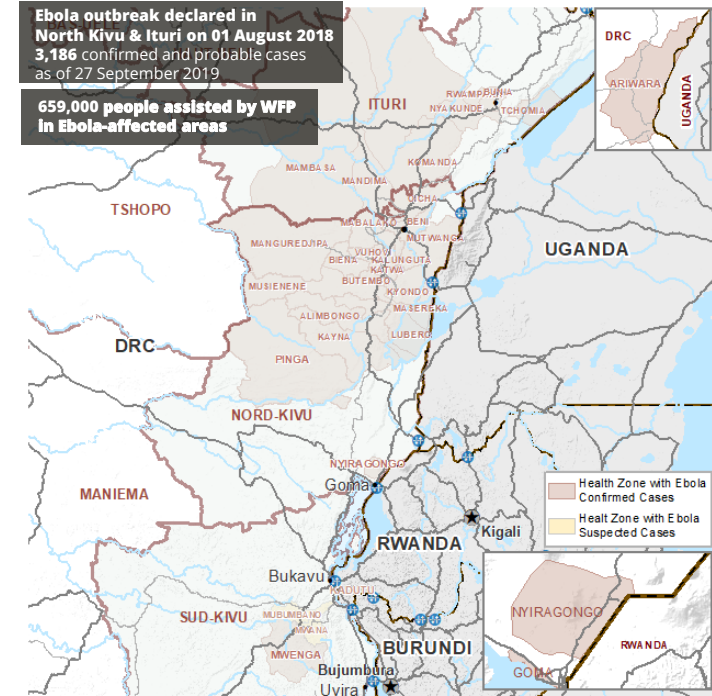


FUNDING
DR Congo Level 3
Emergency Response

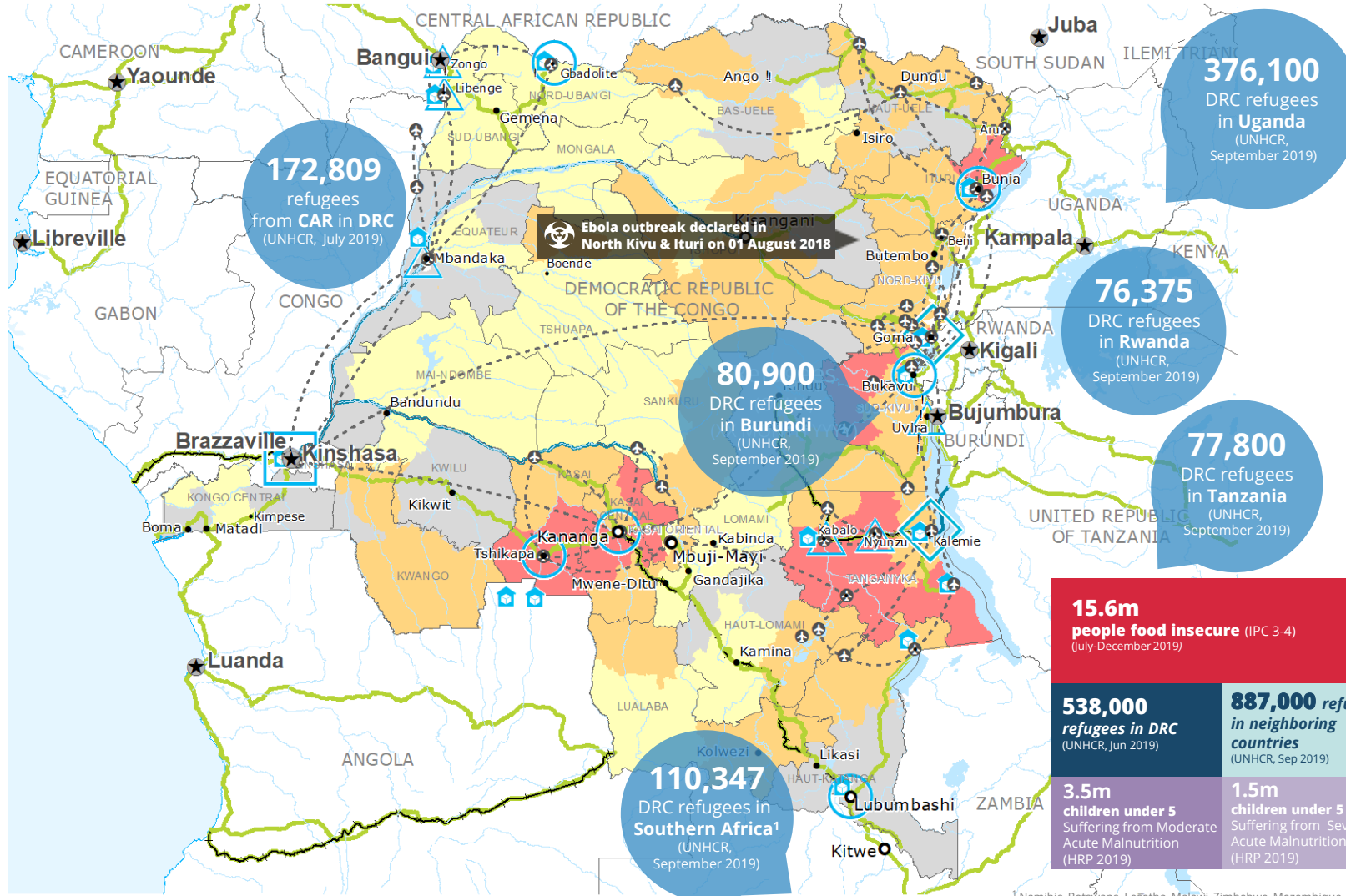
October 2019 - March 2020
USD 179.2m
Net funding requirements

SOURCE: WFP, 13 SEP 2019

EBOLA-AFFECTED HEALTH ZONES



SOURCE: MOH, 27 SEP 2019



¹ Namibia, Botswana, Lesotho, Malawi, Zimbabwe, Mozambique, Madagascar, RSA and the Kingdom of Eswatini (UNHCR, 31 Sep 2019)

Sources: WFP, UNGIWG, GAUL, GLCSC, OCHA, UNHCR, IPC.

The designations employed and the presentation of material in the map(s) do not imply the expression of any opinion on the part of WFP concerning the legal or constitutional status of any country, territory, city or sea, or concerning the delimitation of its frontiers or boundaries. © World Food Programme 2019.

WFP-LED AND SUPPORTED CLUSTERS

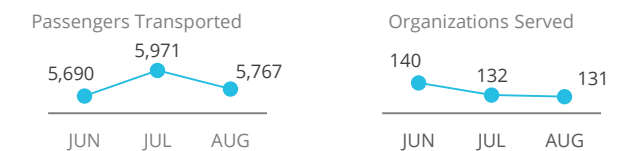
FOOD SECURITY AND LIVELIHOOD CLUSTER



LOGISTICS CLUSTER



UN HUMANITARIAN AIR SERVICES (UNHAS)



SOURCE: WFP, 30 SEP 2019

WFP LEVEL 3 EMERGENCY
SINCE 06 OCTOBER 2017
(LEVEL 2 EMERGENCY SINCE 12 DECEMBER 2013)

For more information, see the [SITUATION REPORT](#) and [COUNTRY BRIEF](#)
www.wfp.org/countries/congo-democratic-republic

DR Congo Interim Country Strategic Plan
https://documents.wfp.org/stellent/groups/public/documents/eb/wfp293190.pdf_ga=2.236369666.2019049590.1564781252.114077222.1558363545

Produced by the WFP Operations Centre (OPSCEN) jointly with Country Office and Regional Bureau Johannesburg. This dashboard is based on best available information at the time of production. Future updates may vary as new information becomes available.

- Country Office
- Area Office
- Sub Office
- Field Office
- Warehouse
- Refugee Camp
- Road Supply Route
- Railway Supply Route
- Water Supply Route
- National Capital
- Major Town
- Intermediate Town
- Small town
- International Boundary
- Province boundary
- River
- Surface Waterbody