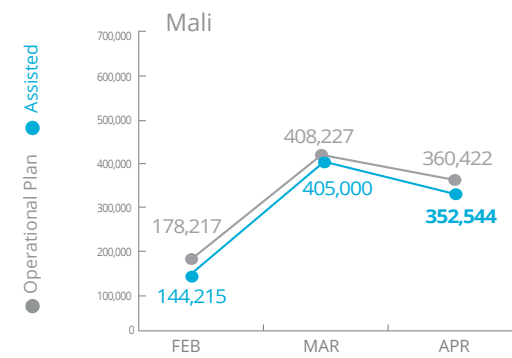


# Mali

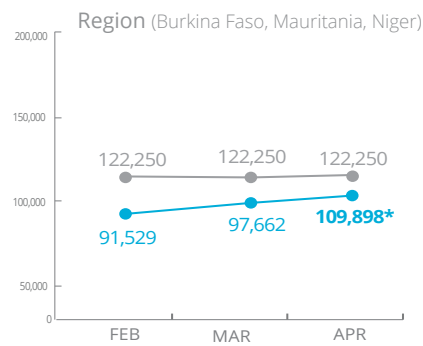


## PEOPLE ASSISTED

Mali Transitional Interim Country Strategic Plan (T-ICSP)



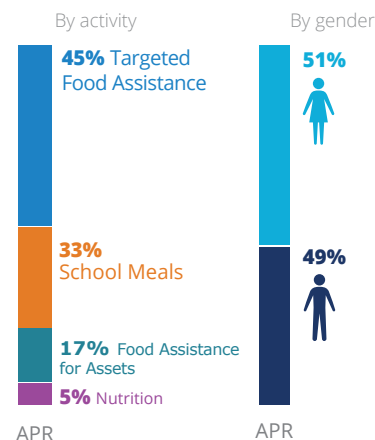
SOURCE: WFP, 17 MAY 2018



\* Malian refugees and IDPs displaced by the Mali border crisis



## OPERATIONAL PROFILE



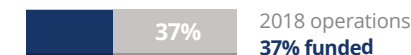
## FUNDING

Mali Transitional Interim Country Strategic Plan (T-ICSP)

June - November 2018

**US\$59.3m**

Net funding requirement



SOURCE: WFP, 16 MAY 2018

**387,334 people**  
food insecure (CH 3-4)  
(March - May 2018)<sup>1</sup>

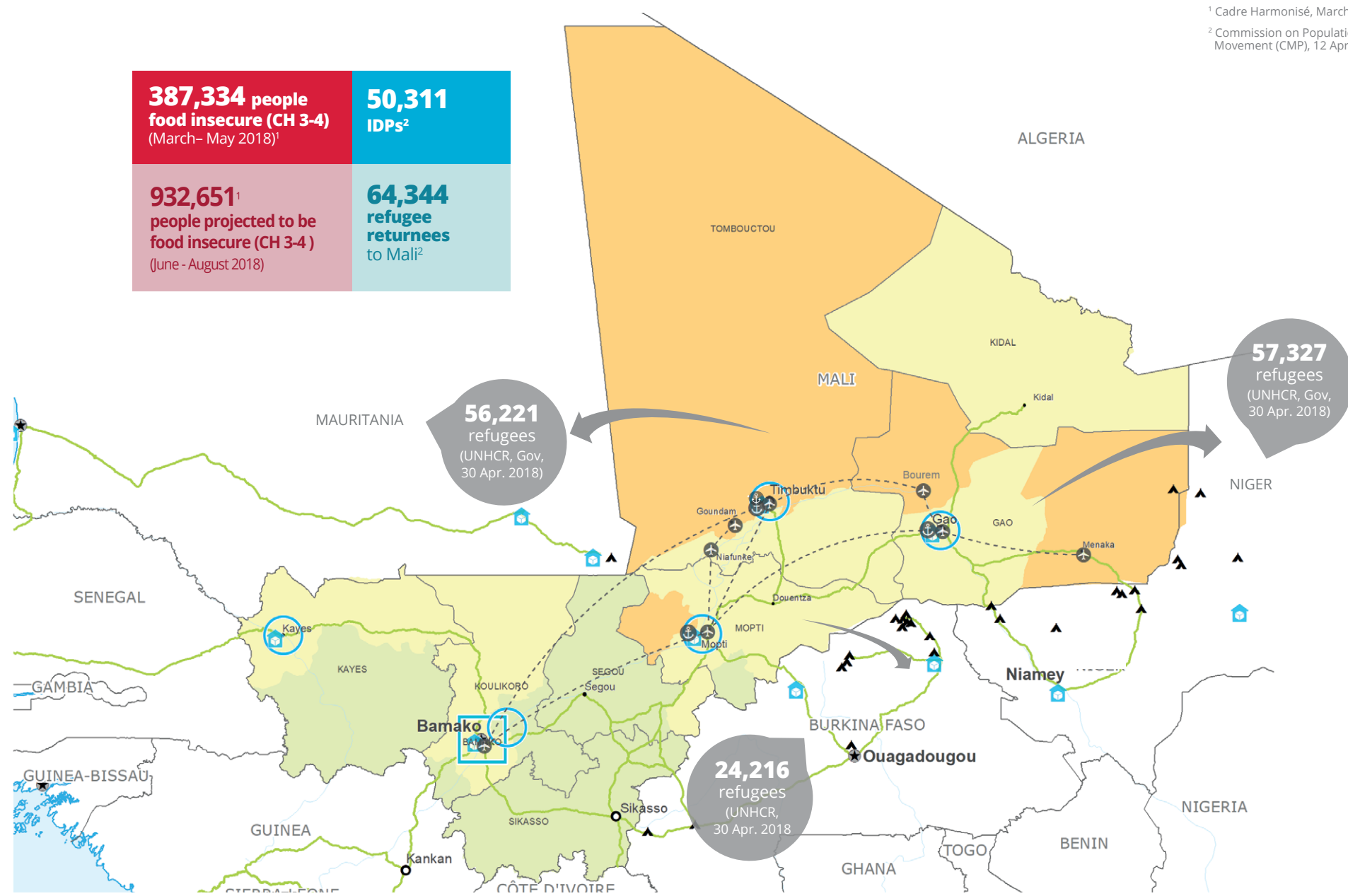
**50,311**  
IDPs<sup>2</sup>

**932,651<sup>1</sup>**  
people projected to be  
food insecure (CH 3-4)  
(June - August 2018)

**64,344**  
refugee  
returnees  
to Mali<sup>2</sup>

<sup>1</sup> Cadre Harmonisé, March 2018

<sup>2</sup> Commission on Population Movement (CMP), 12 April 2018



### Food Security Classification (June-August 2018)

- Minimal (Phase 1)
- Stressed (Phase 2)
- Crisis (Phase 3)
- Emergency (Phase 4)
- Famine (Phase 5)

- Country Office
- Sub Office
- Field Office
- Warehouse

- Road Supply Route
- UNHAS Route
- UNHAS Connection
- River Transport
- Refugee Camp

- National Capital
- Major Town
- Intermediate Town
- Small Town

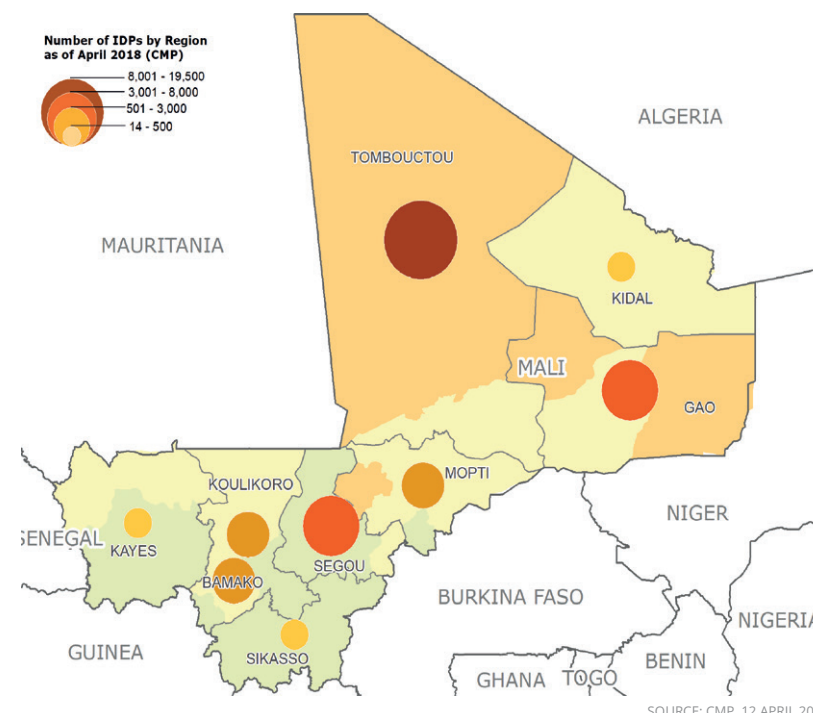
- International Boundary
- Region Boundary
- River
- Surface Waterbody

Sources: WFP, UNGIWG, GAUL, GLSC, OCHA, UNHCR.

The designations employed and the presentation of material in the map(s) do not imply the expression of any opinion on the part of WFP concerning the legal or constitutional status of any country, territory, city or sea, or concerning the delimitation of its frontiers or boundaries. © World Food Programme 2018.

## IDP CONCENTRATION

AS OF 12 APRIL 2018



SOURCE: CMP, 12 APRIL 2018

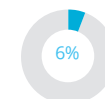
**50,311 IDPs**

## WFP LED & CO-LED CLUSTERS



Food Security and Livelihood Cluster

Number of Partners

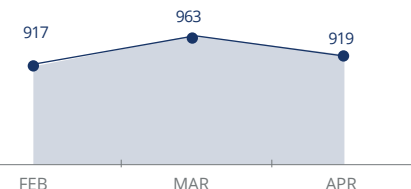


Received: US\$6.5m  
Requirements: US\$103m

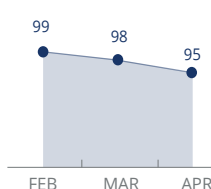
**120**  
(2017)

## UN Humanitarian Air Service (UNHAS)

Passengers Transported



Organizations Served



Sources: OCHA FTS, 28 May 2018; WFP, 14 May 2018

## WFP LEVEL 2 EMERGENCY

SINCE 12 JANUARY 2012

For more information, see the SITUATION REPORT and COUNTRY BRIEF  
[www.wfp.org/countries/mali](http://www.wfp.org/countries/mali)



**Mali Transitional Interim Country Strategic Plan**  
<http://documents.wfp.org/stellent/groups/public/documents/ep/WFP284303.pdf>

Produced by the WFP Operations Centre (OPSCEN) jointly with Country Office and Regional Bureau Dakar. This dashboard is based on best available information at the time of production. Future updates may vary as new information becomes available.