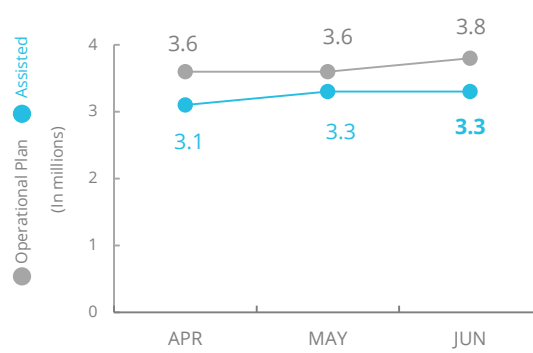


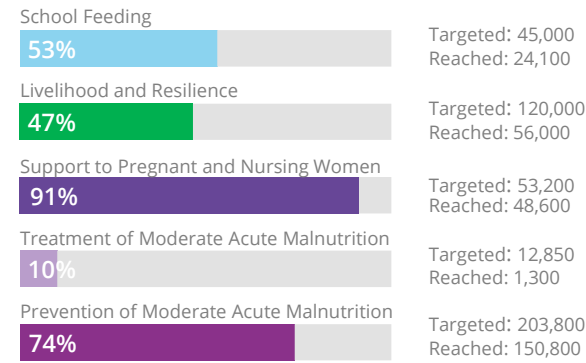
Syria

PEOPLE ASSISTED Syria Interim Country Strategic Plan (ICSP)



SOURCE: WFP, 25 JUL 2019

OPERATIONAL PROFILE By Activity (June 2019)



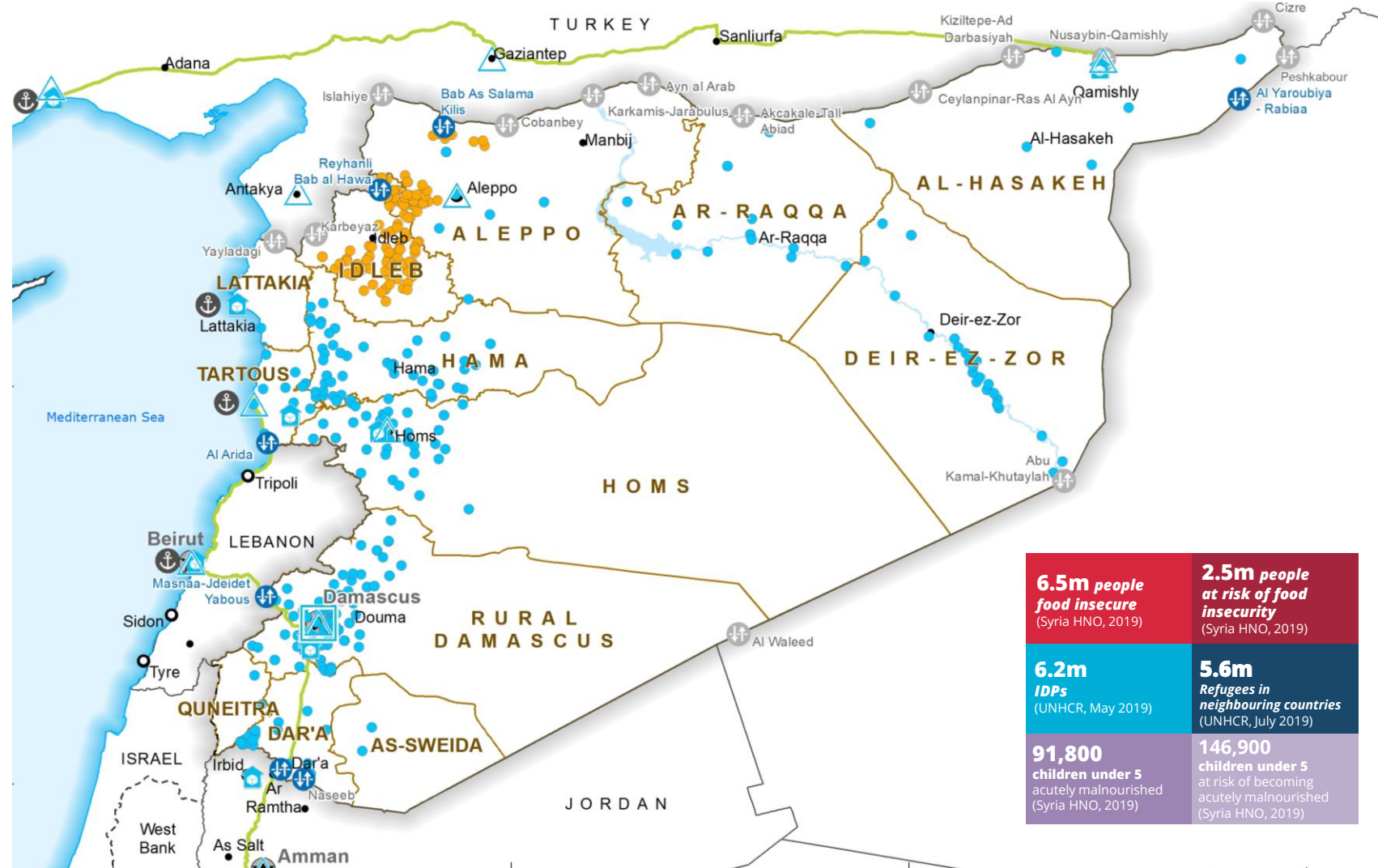
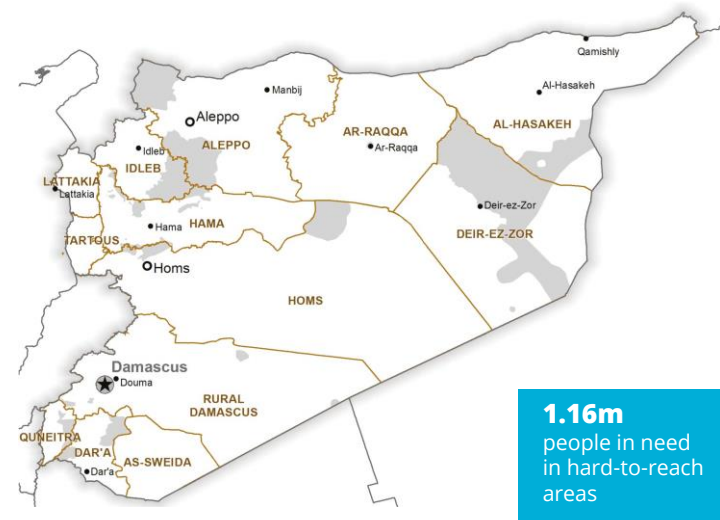
FUNDING Syria Interim Country Strategic Plan (ICSP)

August 2019- January 2020
Net funding requirements

us\$195.3m

SOURCE: WFP, 02 AUG 2019

HARD-TO-REACH AREAS AS OF OCTOBER 2018



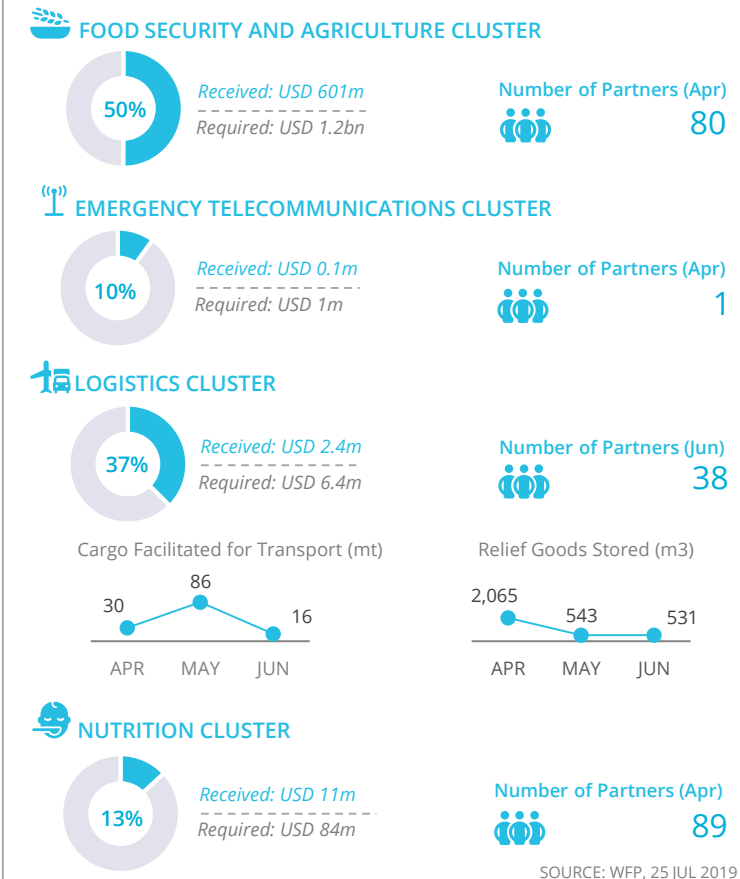
6.5m people food insecure (Syria HNO, 2019)	2.5m people at risk of food insecurity (Syria HNO, 2019)
6.2m IDPs (UNHCR, May 2019)	5.6m Refugees in neighbouring countries (UNHCR, July 2019)
91,800 children under 5 acutely malnourished (Syria HNO, 2019)	146,900 children under 5 at risk of becoming acutely malnourished (Syria HNO, 2019)

- Country Office
- Sub Office
- Field Office
- Road Supply Route
- Warehouse
- Open Border Crossing Point
- Sporadically Open Border Crossing
- International Boundary
- Governorate Boundary
- Armistice Boundary
- National Capital
- Major Town
- Intermediate Town
- Port
- Food Distribution Points (FDP) in June 2019
 - FDP - Regular Deliveries
 - FDP - Cross-line Deliveries
 - FDP - Cross-border Deliveries

Sources: OCHA, WFP, GLCSG, INGIWG, UNHCR, Geonames.

The designations employed and the presentation of material in the map(s) do not imply the expression of any opinion on the part of WFP concerning the legal or constitutional status of any country, territory, city or sea, or concerning the delimitation of its frontiers or boundaries.
© World Food Programme 2019.

WFP-LED AND SUPPORTED CLUSTERS



SOURCE: WFP, 25 JUL 2019

WFP LEVEL 3 EMERGENCY

SINCE 14 DECEMBER 2012
IASC LEVEL 3 EMERGENCY SINCE 15 JANUARY 2013

For more information, see the [SITUATION REPORT](#) and [COUNTRY BRIEF](#)

Syria Interim Country Strategic Plan
https://www1.wfp.org/operations/syria_syrian-arab-republic-interim-country-strategic-plan-2019-2020

Produced by the WFP Operations Centre (OPSCEN) jointly with Country Office and Regional Bureau Cairo. This dashboard is based on best available information at the time of production. Future updates may vary as new information becomes available.

