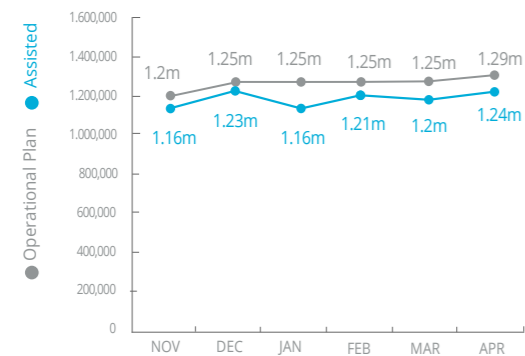




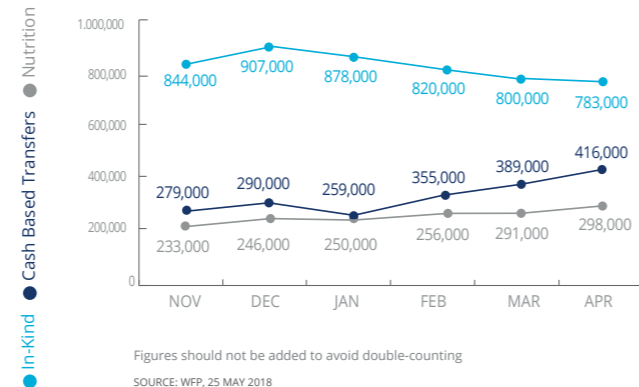
World Food Programme

Nigeria

PEOPLE ASSISTED Regional Emergency Operation 200777



OPERATIONAL PROFILE by Activity



FUNDING Nigeria component of Regional Emergency Operation 200777

May - October 2018
Net funding requirement **USD36.8m**

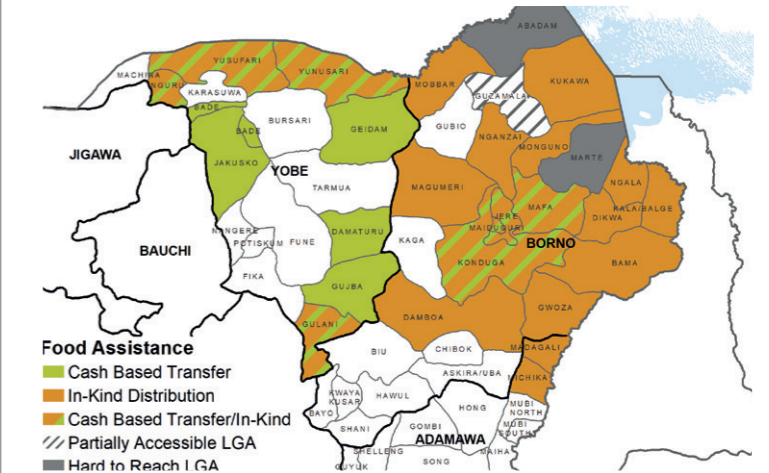
2018 LEVEL 3 RESPONSE
76% Received: USD123.8m
Requirement: USD161.5m

Regional Special Operation 200834
UN Humanitarian Air Services (UNHAS) Nigeria
92% Received: USD13.6m
2018 Requirement: USD14.7m

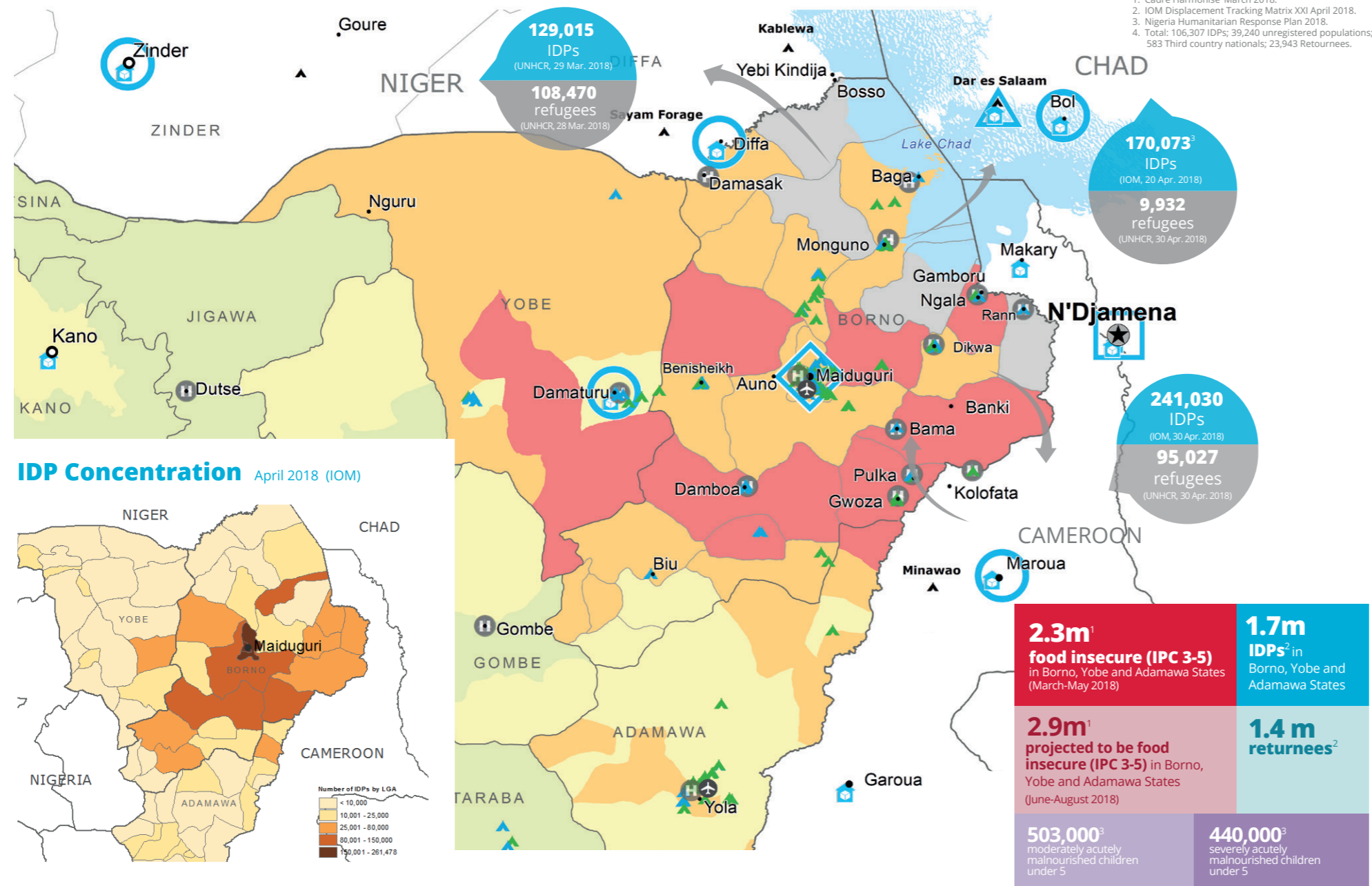
Special Operation 201032
Logistics and Emergency Telecommunications Sectors
15% Received: USD1.6m
2018 Requirement: USD10.6m

SOURCE: WFP, 24 MAY 2018

WFP OPERATIONAL PRESENCE AND FOOD ASSISTANCE MODALITIES

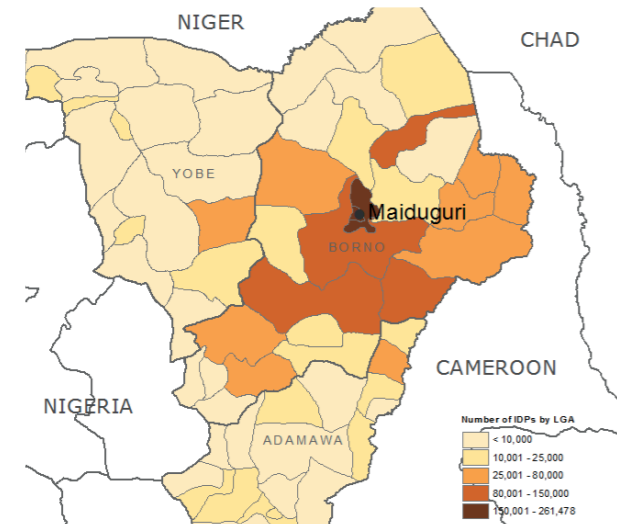


Source: WFP, 10 MAY 2018



1. Cadre Harmonise' March 2018.
2. IOM Displacement Tracking Matrix XXI April 2018.
3. Nigeria Humanitarian Response Plan 2018.
4. Total: 106,307 IDPs; 39,240 unregistered populations; 583 Third country nationals; 23,943 Returnees.

IDP Concentration April 2018 (IOM)



CH Classification (projected June-August 2018)

- No data
- Minimal (Phase 1)
- Stressed (Phase 2)
- Crisis (Phase 3)
- Emergency (Phase 4)
- Famine (Phase 5)

- Country Office
- Area Office
- Sub Office
- Field Office
- Warehouse

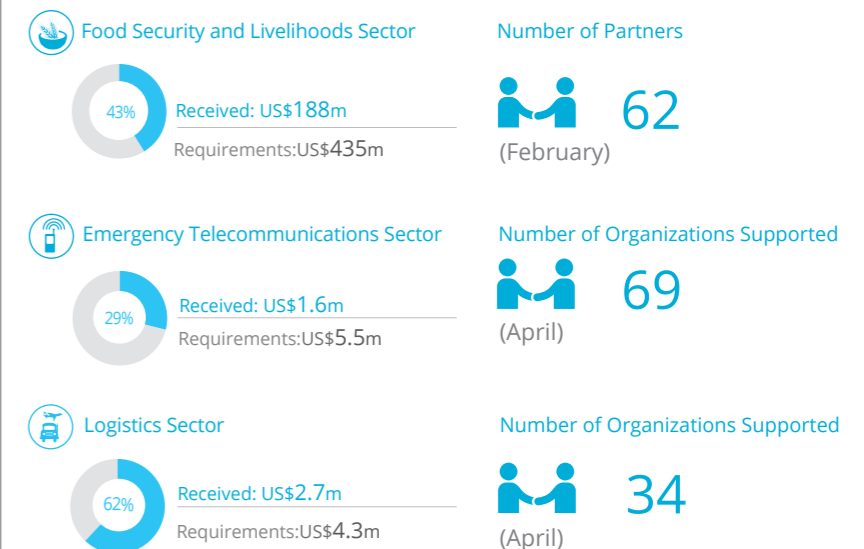
- Refugee Camp
- IDP Camp
- IDP Collective Center
- UNHAS Connection
- Ad-Hoc Rotary-Wing Destination

- National Capital
- Major Town
- Intermediate Town
- International Boundary
- Region Boundary

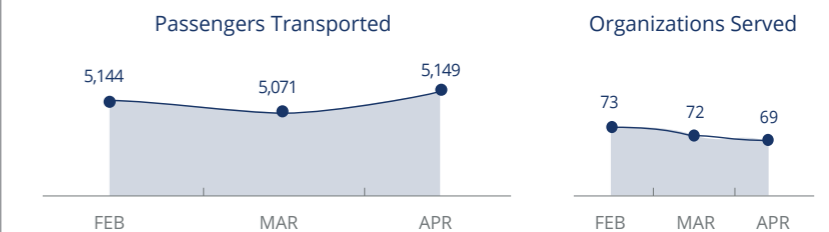
Sources: WFP, UNGIWG, GAUL, GLCSC, OCHA, UNHCR.

The designations employed and the presentation of material in the map(s) do not imply the expression of any opinion on the part of WFP concerning the legal or constitutional status of any country, territory, city or sea, or concerning the delimitation of its frontiers or boundaries. © World Food Programme 2018.

WFP LED & CO-LED SECTORS



UN Humanitarian Air Service (UNHAS)



Sources: OCHA FTS, 24 May 2018; Clusters 11 May 2018

WFP LEVEL 3 EMERGENCY SINCE 11 AUGUST 2016

For more information, see the SITUATION REPORT and COUNTRY BRIEF www.wfp.org/countries/nigeria

2A Regional Emergency Operation 200777
<http://documents.wfp.org/stellent/groups/public/documents/ep/WFP284303.pdf>

Produced by the WFP Operations Centre (OPSCEN) jointly with Country Office and Regional Bureau Dakar. This dashboard is based on best available information at the time of production. Future updates may vary as new information becomes available.