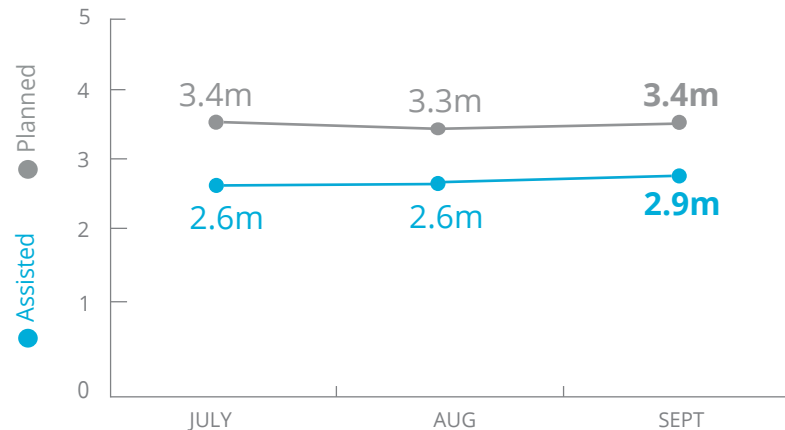


Sahel



PEOPLE ASSISTED

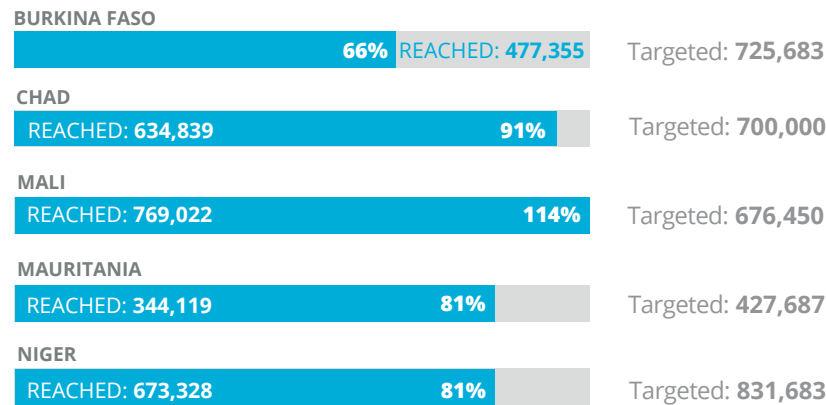
Across Burkina Faso, Chad, Mali, Mauritania and Niger



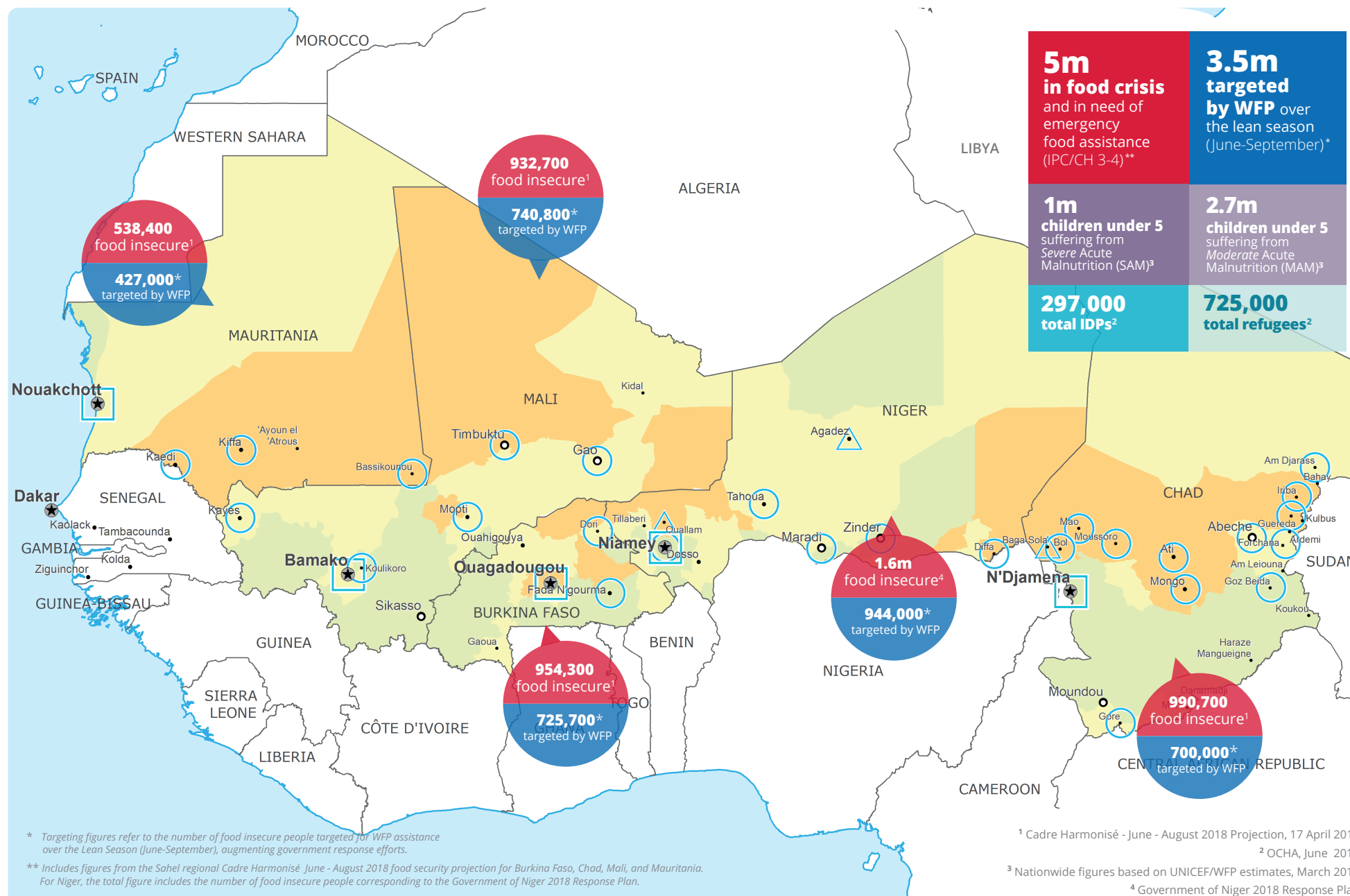
SOURCE: RB, 05 NOVEMBER 2018

ASSISTANCE BREAKDOWN

September



SOURCE: RB, 05 NOVEMBER 2018



* Targeting figures refer to the number of food insecure people targeted for WFP assistance over the Lean Season (June-September), augmenting government response efforts.

** Includes figures from the Sahel regional Cadre Harmonisé June - August 2018 food security projection for Burkina Faso, Chad, Mali, and Mauritania. For Niger, the total figure includes the number of food insecure people corresponding to the Government of Niger 2018 Response Plan.

¹ Cadre Harmonisé - June - August 2018 Projection, 17 April 2018

² OCHA, June 2018

³ Nationwide figures based on UNICEF/WFP estimates, March 2018

⁴ Government of Niger 2018 Response Plan

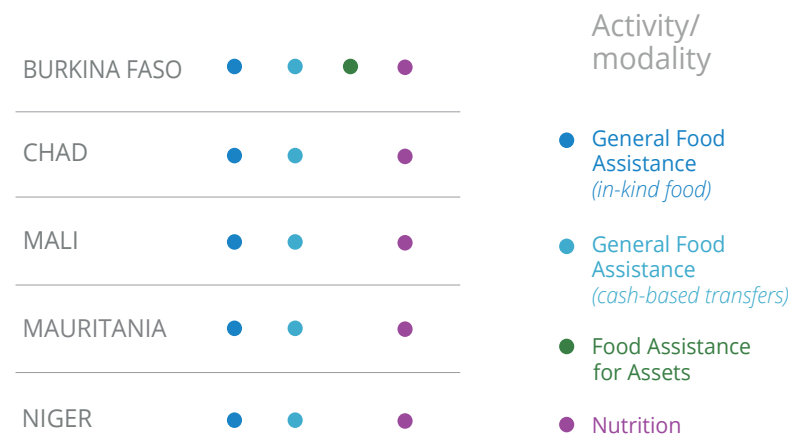
Sources: WFP, UNGIWG, GAUL, GLSCS, OCHA, UNHCR.

The designations employed and the presentation of material in the map(s) do not imply the expression of any opinion on the part of WFP concerning the legal or constitutional status of any country, territory, city or sea, or concerning the delimitation of its frontiers or boundaries.
© World Food Programme 2018.



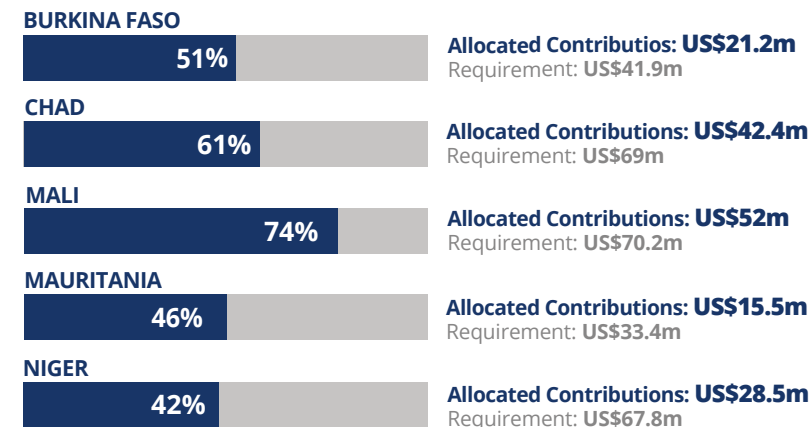
OPERATIONAL PROFILE

WFP Country Operations



FUNDING

WFP 2018 Sahel Lean Season Response



TOTAL:

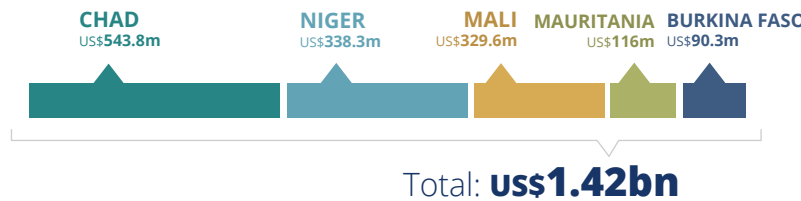


SOURCE: WFP, 25 OCTOBER 2018



2018 HUMANITARIAN REQUIREMENTS

Inter-Agency Humanitarian Response / Work Plans



SOURCE: OCHA, JUNE 2018

WFP LEVEL 3 EMERGENCY

SINCE 06 JUNE 2018

REGIONAL LEVEL 3 EMERGENCY COVERING WFP OPERATIONS IN CHAD, BURKINA FASO, MALI, MAURITANIA, AND NIGER

For more information, see the SITUATION REPORT and COUNTRY BRIEFS
www.wfp.org

Produced by the WFP Operations Centre (OPSCEN) jointly with relevant Country Offices and Regional Bureau Dakar. This dashboard is based on best available information at the time of production. Future updates may vary as new information becomes available.