

The WFP Innovation Accelerator is generously supported by the Federal Ministry of Economic Cooperation and Development of the Federal Republic of Germany, the Federal Foreign Office of the Federal Republic of Germany and the Bavarian State Ministry for Food, Agriculture and Forestry.



Bavarian State Ministry
of Food, Agriculture and Forestry



Assets from Space

Exhibition on the margins of the second regular session of the Executive Board

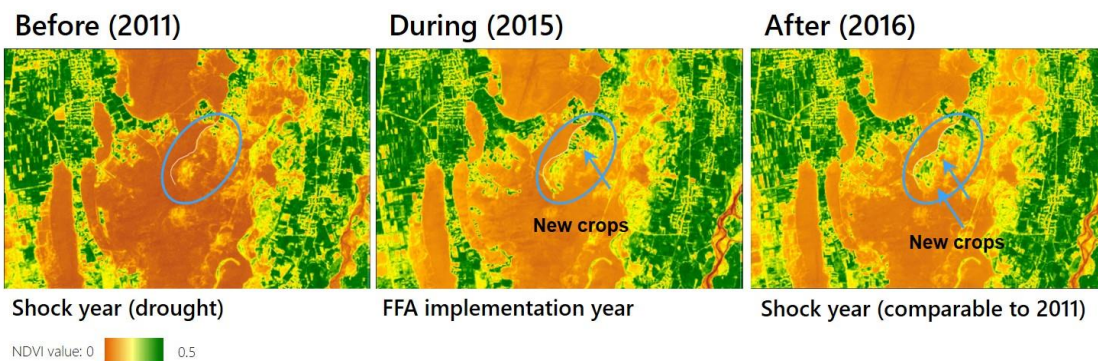
13–16 November 2017 (all day)

Red Tower exhibition area

You are kindly invited to the exhibition on Assets from Space, prepared by the Asset Creation and Livelihoods Unit (OSZPR) in collaboration with the Vulnerability Analysis Unit (VAM).

The exhibition will highlight the results of the Asset Impact Monitoring System (AIMS) pilot project, which used satellite imagery to monitor the assets and surrounding landscapes of WFP's food assistance for assets (FFA) activities and feeder roads programmes in the field. Throughout 2017, and with the support of the WFP Innovation Accelerator, OSZPR and VAM have completed the pilot phase of the project, which began gathering satellite imagery of FFA activities from space. This exhibition will feature select FFA activities in five countries – Afghanistan, Niger, Sudan, South Sudan and Tajikistan – and the positive landscape changes that have resulted.

We look forward to welcoming you at the exhibition for more information on our AIMS pilot project, as well as how satellite imagery can be used as a cost-effective way of complementing FFA monitoring in the future.



This figure shows how crops were more resilient in 2016 during a drought year than they were during similar conditions in 2011 as a result of an FFA intervention in 2015.