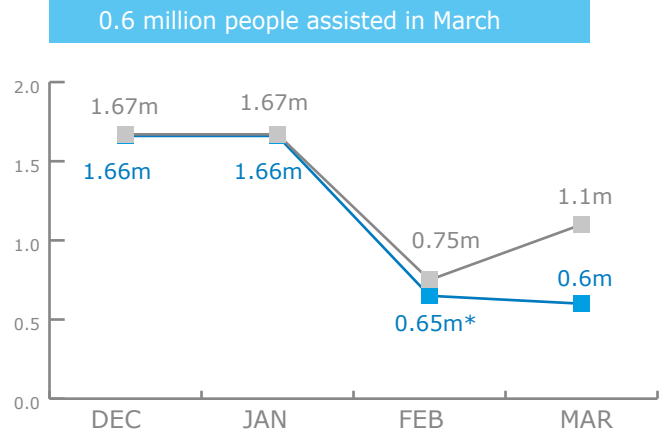


BENEFICIARIES

Emergency Operation 200677



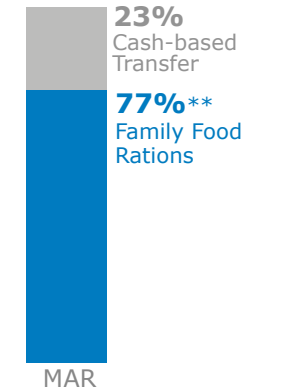
Project Planned ■ Assisted



*Distribution figures for FEB are low due to change from individual food parcels to break-bulk rations, supplier delays, and delays at Turkish-Iraqi border

Source: WFP, 23 March 2016

BY ACTIVITY

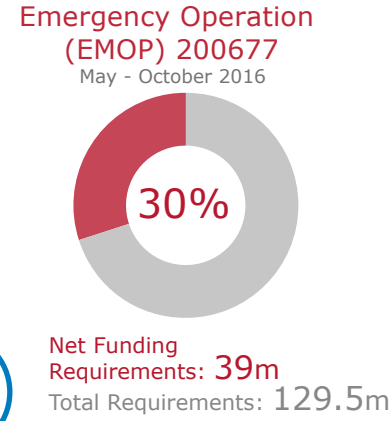


**No IRRs are reported as the same beneficiaries receiving those go on to receive FFRs.

FUNDING



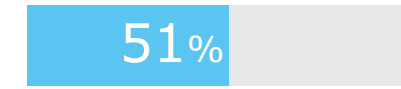
NET FUNDING REQUIREMENTS



Source: WFP, 21 April 2016

PROJECT FUNDING STATUS

Special Operation (SO) 200746
Logistics and Emergency
Telecommunications Clusters
Jul 2014 - Dec 2016

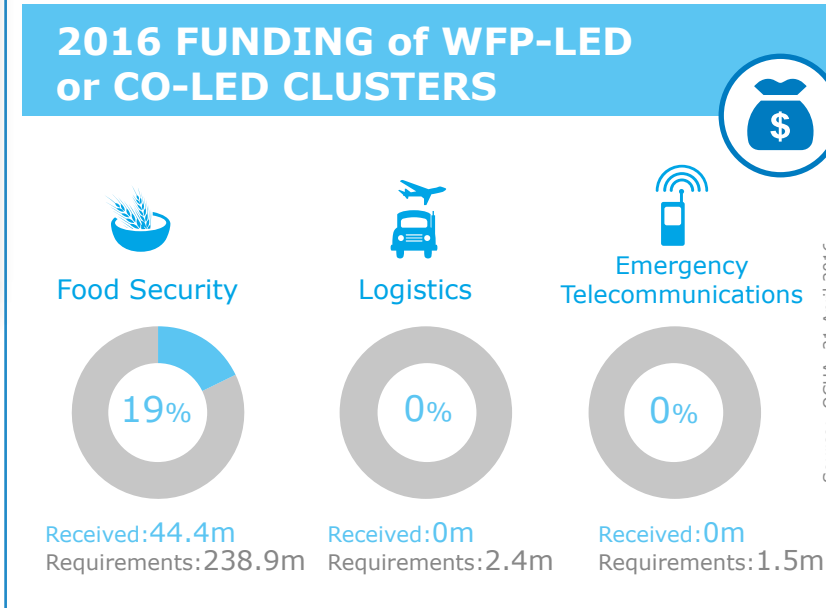
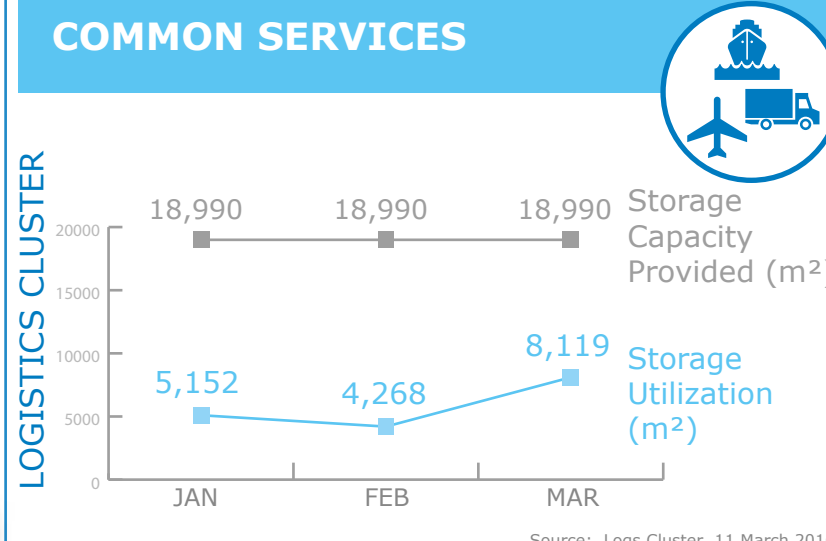
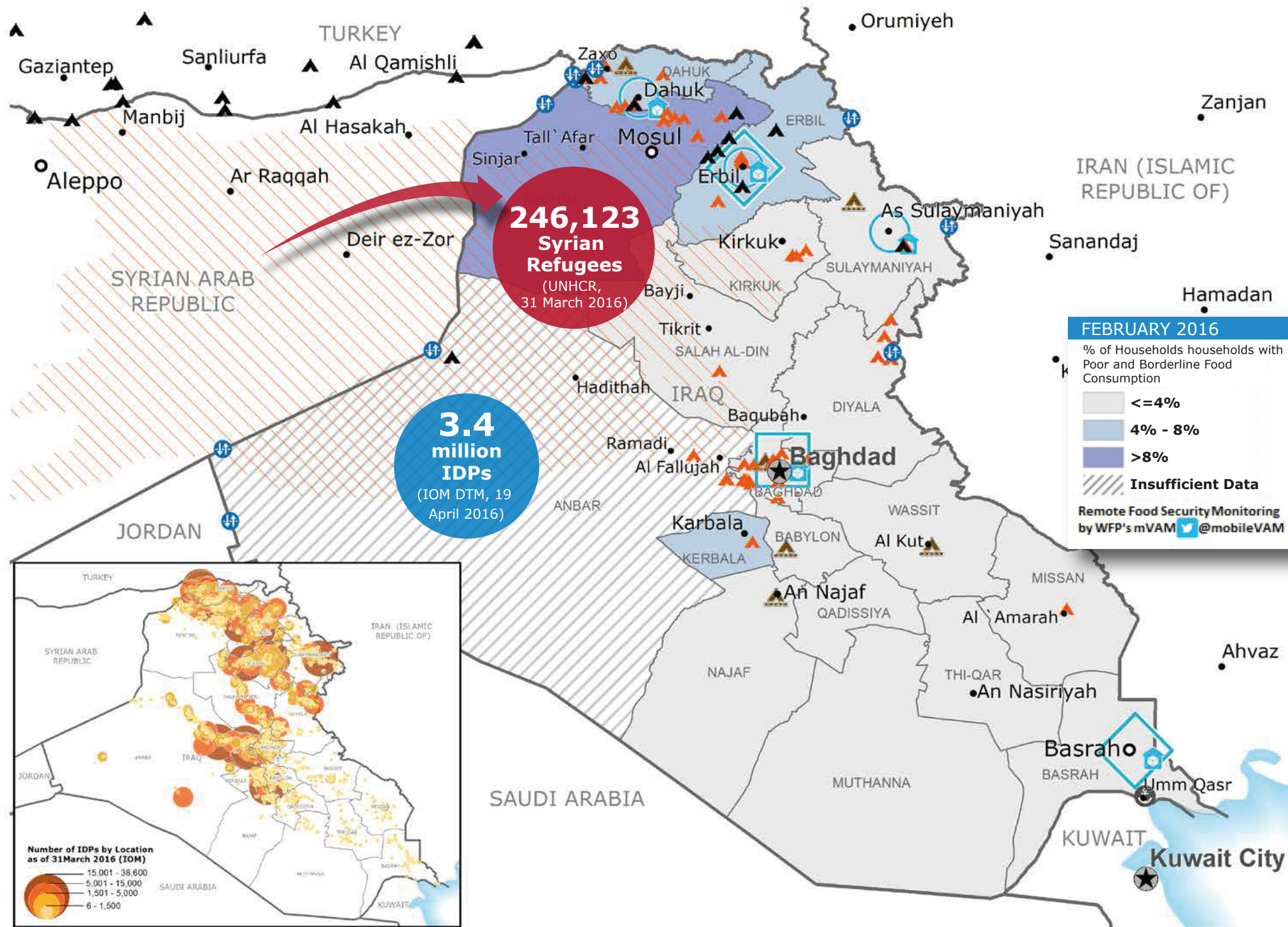


7.8m Received | **15.1m** Total Requirements

Source: WFP, 21 April 2016

OPERATIONAL CHALLENGES

- Humanitarian Access
- Resources
- Insecurity



WFP LEVEL 3 EMERGENCY
SINCE 11 AUGUST 2014

IASC LEVEL 3 EMERGENCY
SINCE 13 AUGUST 2014

Check the **COUNTRY BRIEF** and **SITUATION REPORT**
<http://www.wfp.org/countries/iraq>

- Country Office
- Warehouse
- IDP Camp
- National Capital
- International boundary
- Area Office
- Border Crossing Point
- Refugee Camp
- Major Town
- Region boundary
- Sub Office
- Restricted Access Area
- IDP Camp Under Construction
- Intermediate Town
- Small Town

Sources: WFP, UNGIWG, GAUL, GLCSC, OCHA, UNHCR, IOM, INSO
The designations employed and the presentation of material in the map(s) do not imply the expression of any opinion on the part of WFP concerning the legal or constitutional status of any country, territory, city or sea, or concerning the delimitation of its frontiers or boundaries. © World Food Programme 2016

