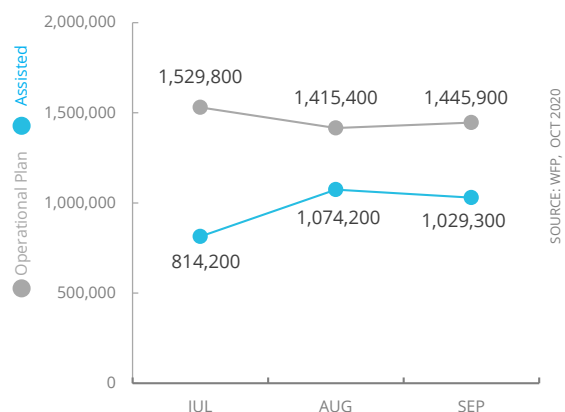


# Democratic Republic of Congo

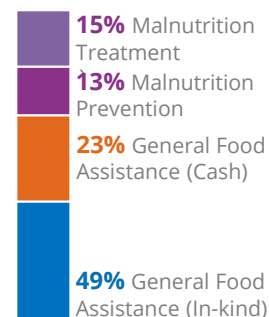
## PEOPLE ASSISTED

DR Congo Interim Country Strategic Plan



## OPERATIONAL PROFILE

By Activity



By Gender

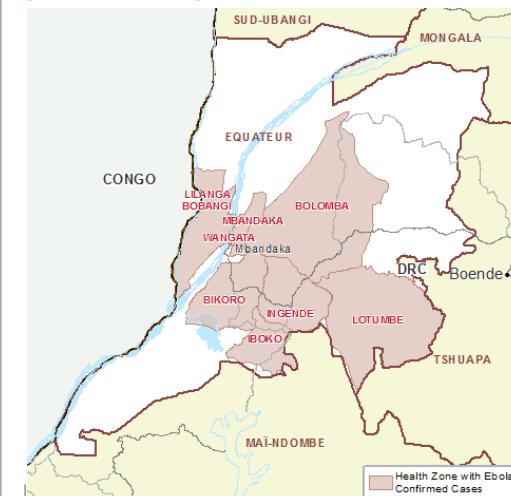


## COVID-19 OPERATIONAL IMPACT

Status WFP Response adjusted

- Extended distribution timelines
  - Crowd control and social distancing measures at distribution sites
  - Mandatory hygiene measures at distribution sites
  - School feeding through take home rations
- Legend: ✔ Ongoing ! Partially Suspended ✘ Suspended

## EBOLA OUTBREAK IN EQUATEUR PROVINCE (As of 04 Oct)



### CASES

Confirmed 119  
Recovered 67  
Deceased 53

## FUNDING

DR Congo Interim Country Strategic Plan (ICSP)

November 2020 – April 2021

Net funding requirements

# US\$158m

2020 LEVEL 3 RESPONSE

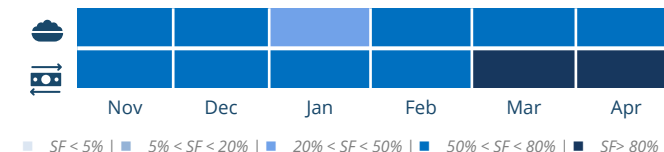
Requirements US\$ 576m

## AVERAGE MONTHLY FUNDING REQUIREMENTS (US\$)

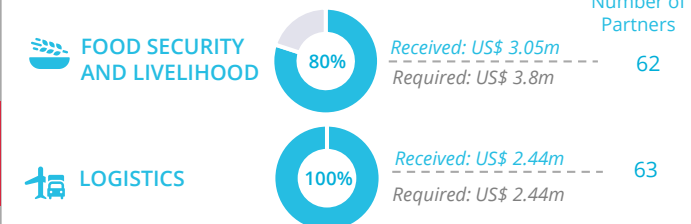
33.3m

17.7m

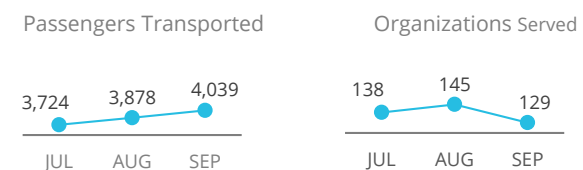
### EXPECTED SHORTFALLS



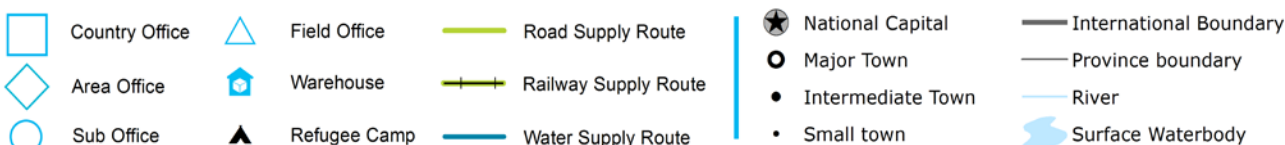
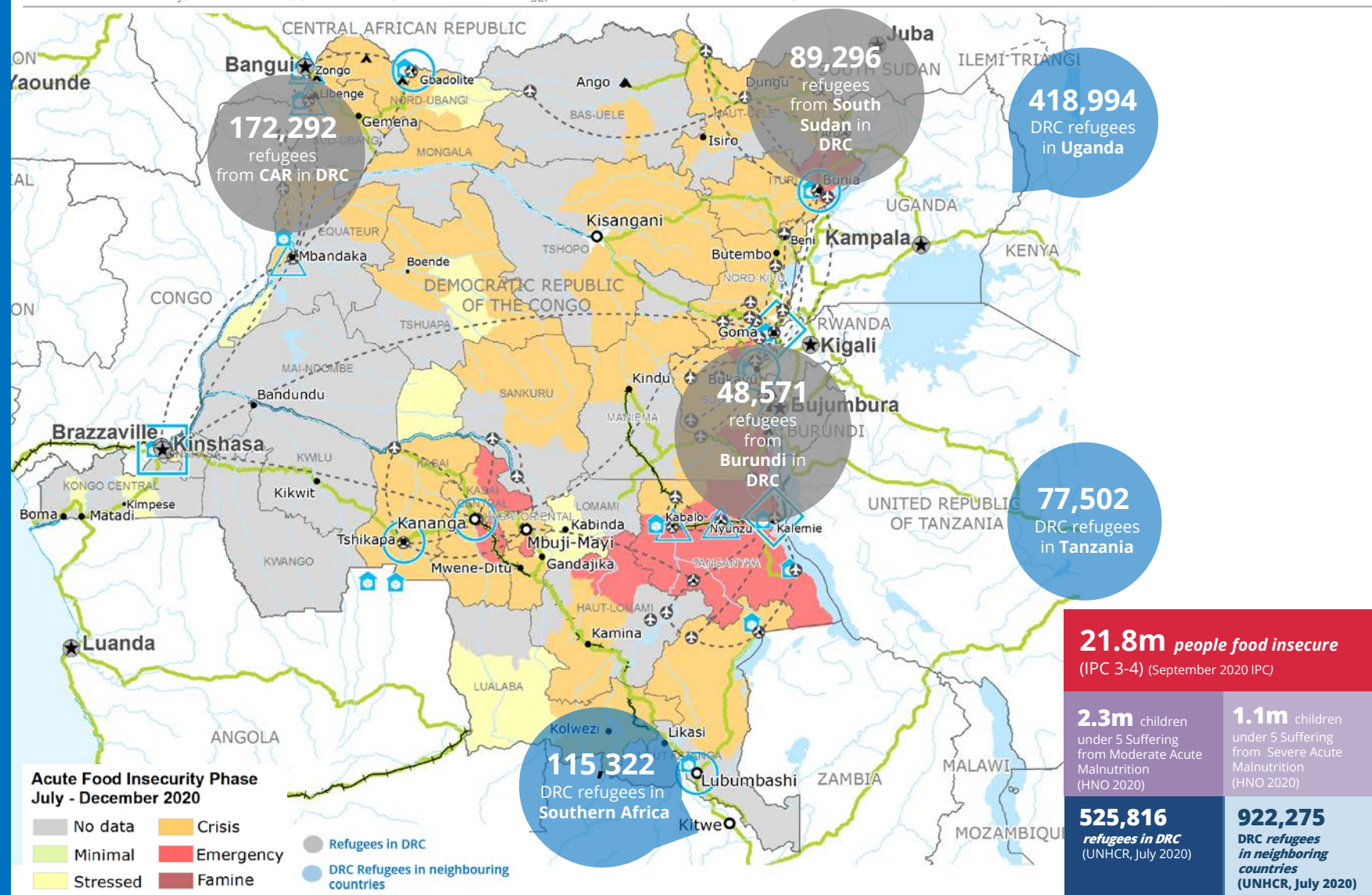
## WFP-LED AND SUPPORTED CLUSTERS



## UN HUMANITARIAN AIR SERVICES (UNHAS)



## WFP LEVEL 3 EMERGENCY



\*Includes Botswana, Eswatini, Lesotho, Madagascar, Malawi, Namibia, South Africa and Zimbabwe.

Sources: WFP, UNGIWI, GAUL, GLCSC, OCHA, UNHCR, IPC.

The designations employed and the presentation of material in the map(s) do not imply the expression of any opinion on the part of WFP concerning the legal or constitutional status of any country, territory, city or sea, or concerning the delimitation of its frontiers or boundaries.

© World Food Programme 2020.

