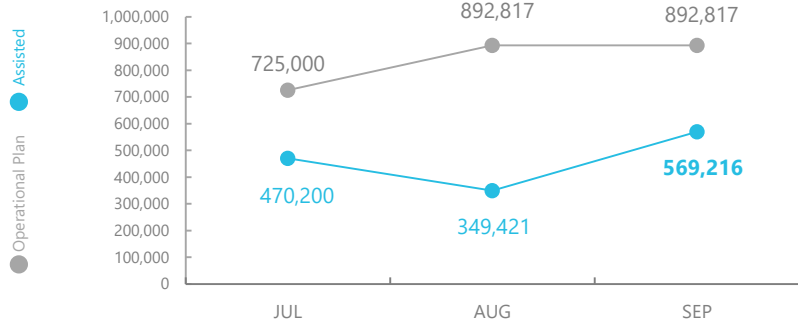


# Central African Republic



## PEOPLE ASSISTED

C.A.R. Interim Country Strategic Plan (ICSP)



SOURCE: WFP, 21 OCT 2019



## FUNDING

C.A.R. Interim Country Strategic Plan (ICSP)

November 2019 – April 2020  
**Net funding requirements**  
**US\$86m**

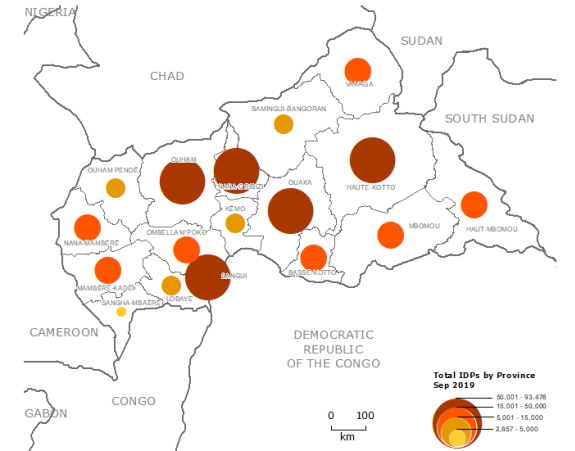
**2019 LEVEL 2 RESPONSE**  
Requirements: USD 175.0m  
Contributions: USD 117.7m

**67%**

SOURCE: 25 OCT 2019

## IDP CONCENTRATION

As of September 2019

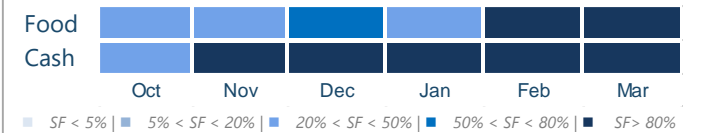


SOURCE: CMP, 24 OCT 2019

## AVERAGE MONTHLY FUNDING REQUIREMENTS

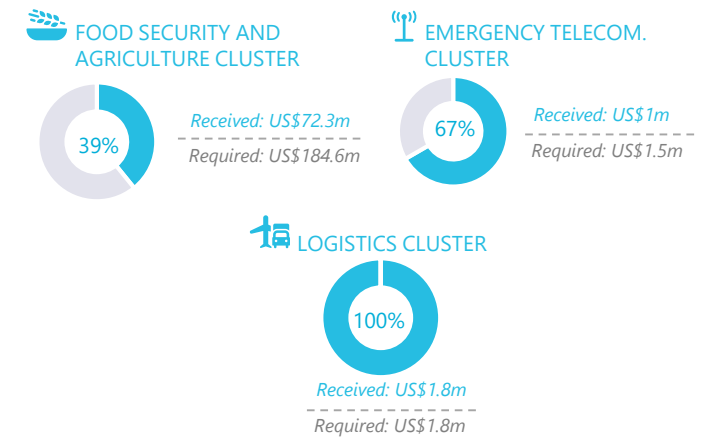
**Food US\$ 12.1m** **Cash US\$ 2.2m**

### EXPECTED SHORTFALLS



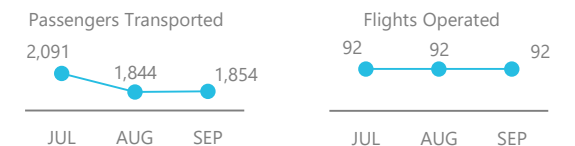
SOURCE: WFP, 23 OCT 2019

## WFP-LED AND SUPPORTED CLUSTERS



SOURCE: WFP, 01 OCT 2019

## UN HUMANITARIAN AIR SERVICES (UNHAS)



SOURCE: WFP, 01 OCT 2019

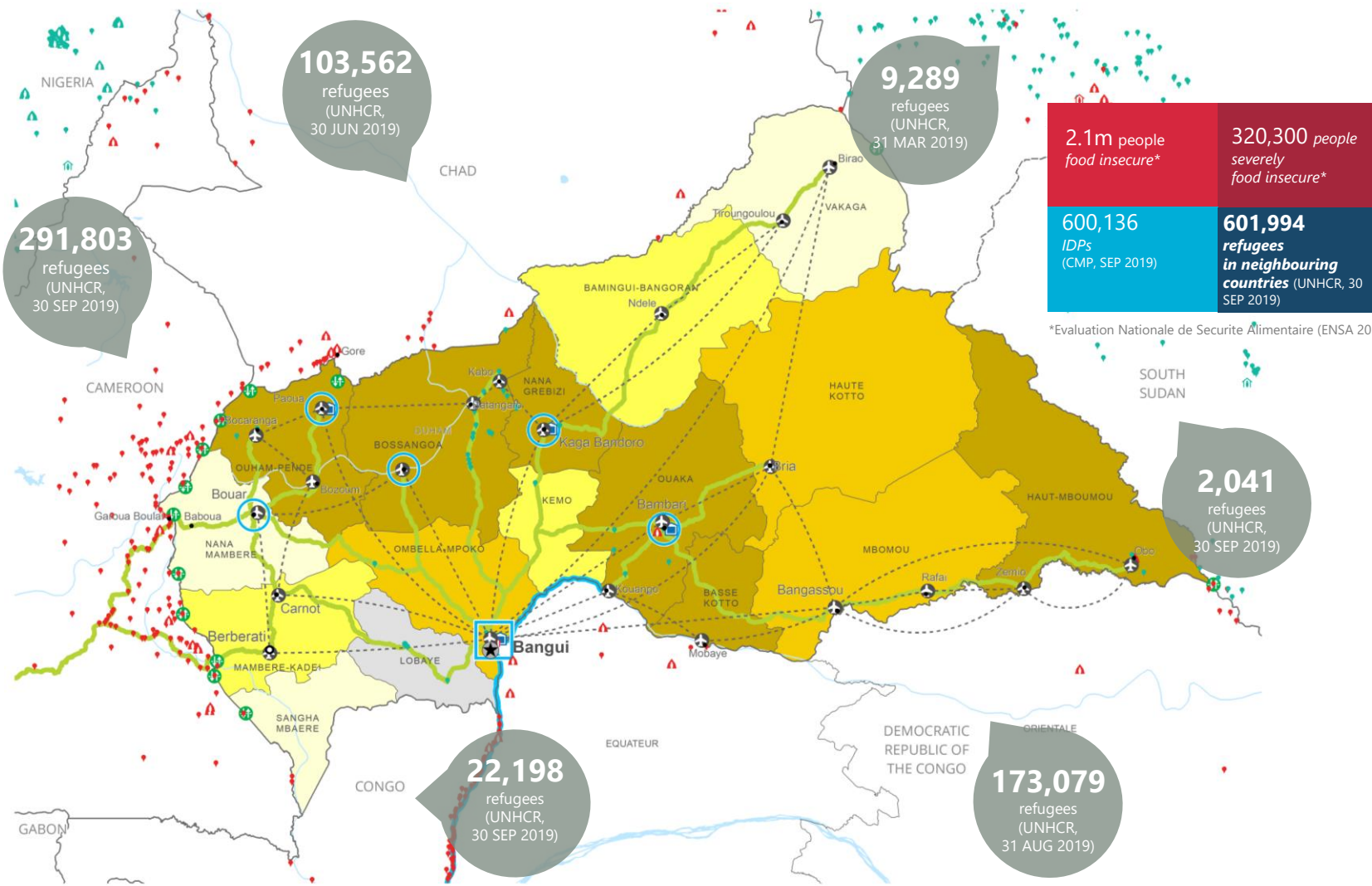
## WFP LEVEL 2 EMERGENCY

SINCE 02 JUNE 2015

For more information, see the [SITUATION REPORT](#) and [COUNTRY BRIEF](#)  
<https://www.wfp.org/countries/central-african-republic>

C.A.R. Interim Country Strategic Plan  
[https://docs.wfp.org/api/documents/WFP-0000071610/download/?\\_ga=2.10916919.2010349590.1564781252-114077222.1558363545](https://docs.wfp.org/api/documents/WFP-0000071610/download/?_ga=2.10916919.2010349590.1564781252-114077222.1558363545)

Produced by the WFP Operations Centre (OPSCEN) jointly with Country Office and Regional Bureau Dakar. This dashboard is based on best available information at the time of production. Future updates may vary as new information becomes available.



**ENSA December 2018**  
% of households in Moderate and Severe Food Insecurity

- No Data
- ≤ 30%
- 30% - 50%
- 50% - 60%
- ≥ 60%

- Country Office
- Sub Office
- Field Office
- Warehouse
- Road Supply Route
- Waterway Supply Route
- UNHAS Connection
- UNHAS Route
- Border Crossing Point
- IDP Camp
- IDP Center
- IDP Location
- Refugee Camp
- Refugee Center
- Refugee Location
- National Capital
- Major Town
- Intermediate Town
- Small town
- International Boundary
- Province boundary
- River

Sources: WFP, UNGIWG, GAUL, GLCSC, OCHA, UNHCR.

The designations employed and the presentation of material in the map(s) do not imply the expression of any opinion on the part of WFP concerning the legal or constitutional status of any country, territory, city or sea, or concerning the delimitation of its frontiers or boundaries. © World Food Programme 2018.