



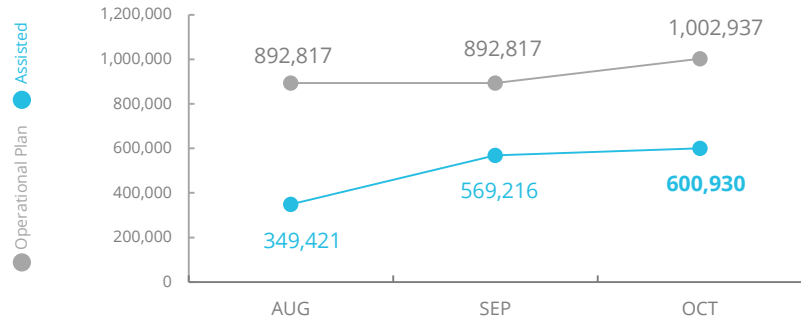
World Food Programme

Central African Republic

Emergency Dashboard | November 2019



PEOPLE ASSISTED C.A.R. Interim Country Strategic Plan (ICSP)



SOURCE: WFP, 09 NOV 2019



FUNDING C.A.R. Emergency Response

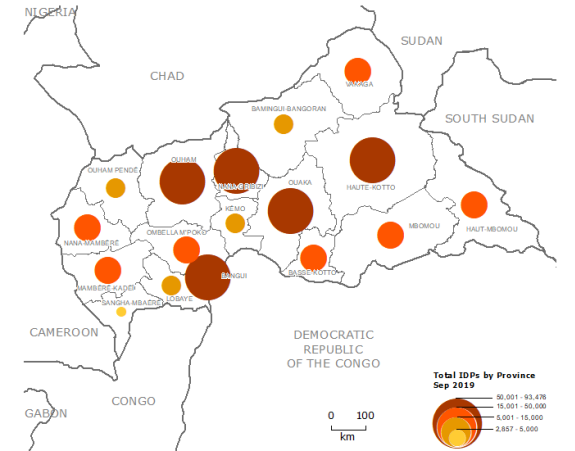
December 2019 – May 2020 Net funding requirements **US\$88.0m**

2019 LEVEL 2 RESPONSE (Entire Country Strategic Plan)
Requirements: USD 175.0m
Contributions: USD 120.2m

69%

SOURCE: WFP, 09 NOV 2019

IDP CONCENTRATION As of September 2019

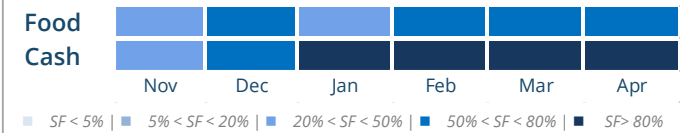


SOURCE: CMP, 24 OCT 2019

AVERAGE MONTHLY FUNDING REQUIREMENTS

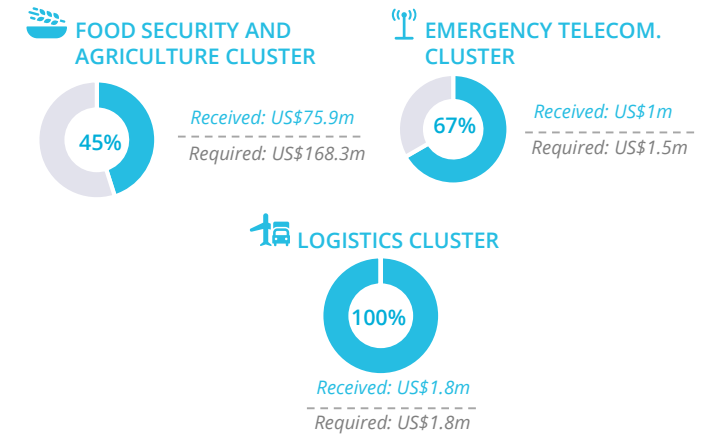
Food US\$ 12.6m Cash US\$ 3.8m

EXPECTED SHORTFALLS

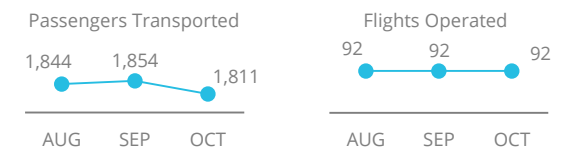


SOURCE: WFP, 28 NOV 2019

WFP-LED AND SUPPORTED CLUSTERS



UN HUMANITARIAN AIR SERVICES (UNHAS)



SOURCE: WFP, NOV 2019

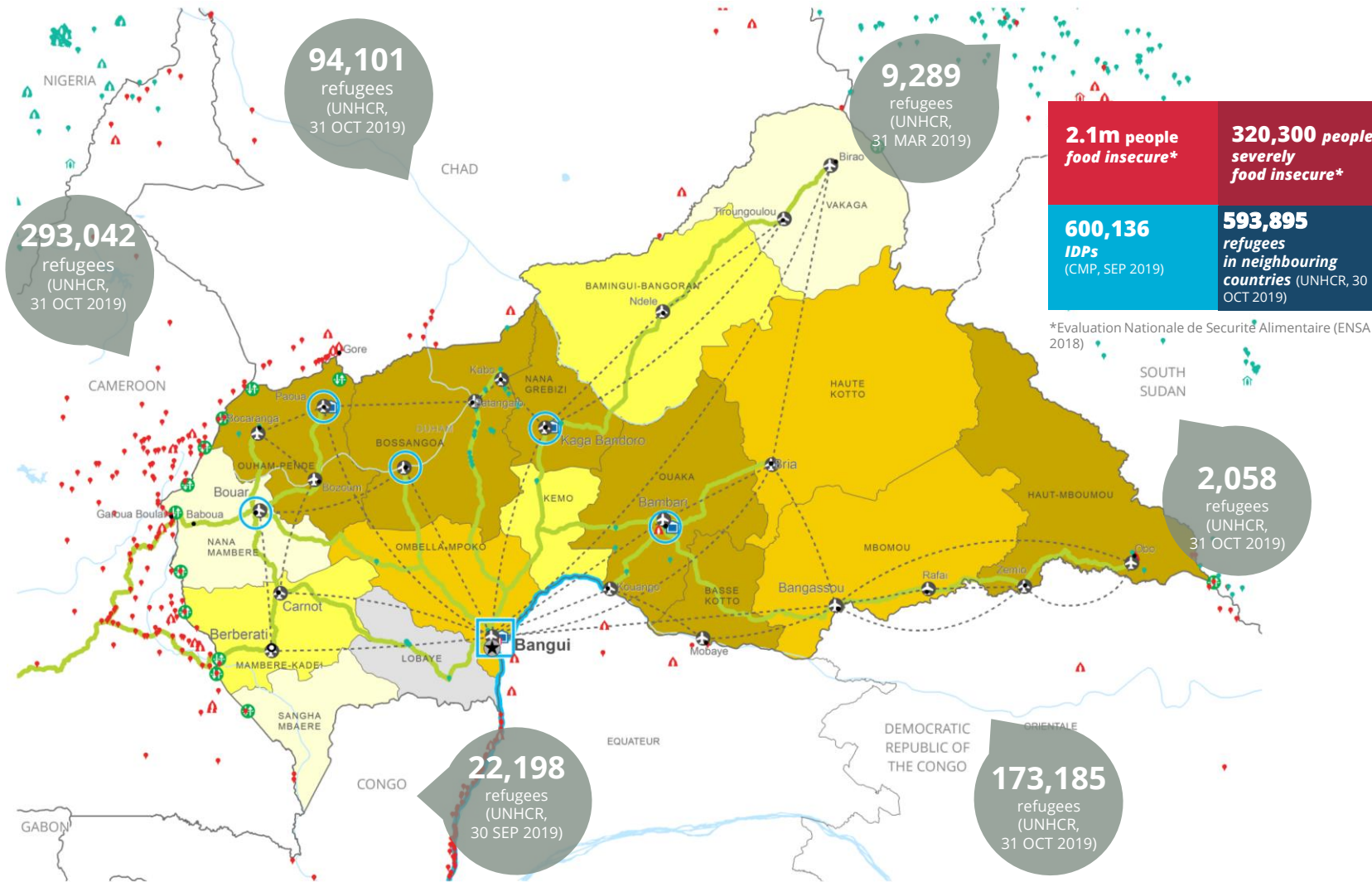
WFP LEVEL 2 EMERGENCY

SINCE 02 JUNE 2015

For more information, see the SITUATION REPORT and COUNTRY BRIEF <https://www.wfp.org/countries/central-african-republic>

C.A.R Interim Country Strategic Plan https://docs.wfp.org/api/documents/WFP-0000071610/download/?_ga=2.10916919.2010349590.1564781252-114077222.1558363545

Produced by the WFP Operations Centre (OPSCEN) jointly with Country Office and Regional Bureau Dakar. This dashboard is based on best available information at the time of production. Future updates may vary as new information becomes available.



ENSA December 2018
% of households in Moderate and Severe Food Insecurity

- No Data
- ≤ 30%
- 30% - 50%
- 50% - 60%
- ≥ 60%

- Country Office
- Sub Office
- Field Office
- Warehouse
- Road Supply Route
- Waterway Supply Route
- UNHAS Connection
- UNHAS Route
- Border Crossing Point
- IDP Camp
- IDP Center
- IDP Location
- Refugee Camp
- Refugee Center
- Refugee Location
- National Capital
- Major Town
- Intermediate Town
- Small town
- International Boundary
- Province boundary
- River

Sources: WFP, UNGIWG, GAUL, GLCSC, OCHA, UNHCR.

The designations employed and the presentation of material in the maps do not imply the expression of any opinion on the part of WFP concerning the legal or constitutional status of any country, territory, city or sea, or concerning the delimitation of its frontiers or boundaries. © World Food Programme 2018.

SAVING LIVES
CHANGING LIVES