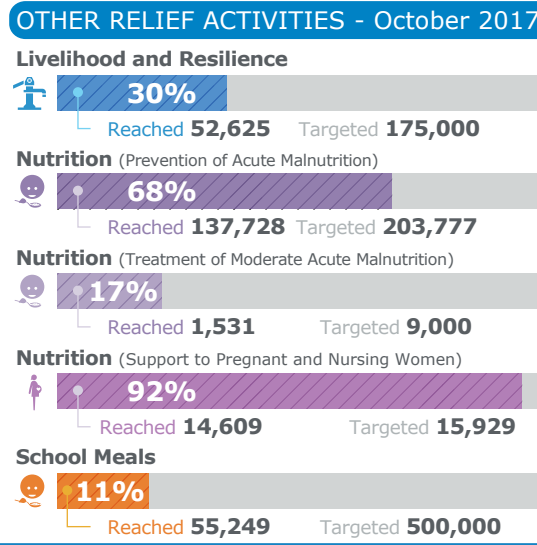
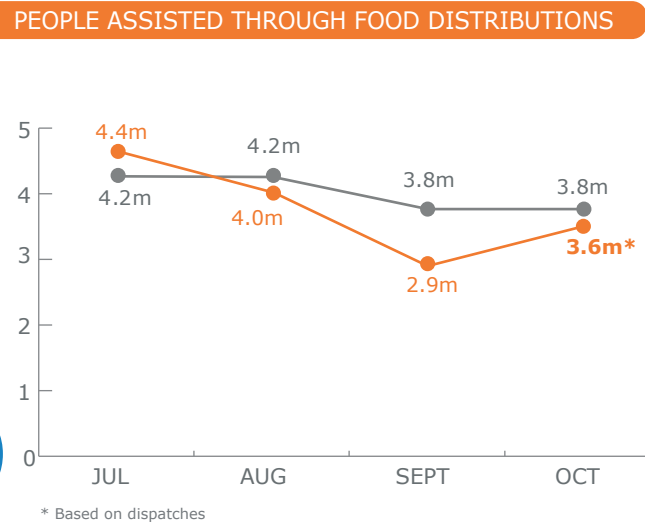


PEOPLE ASSISTED THROUGH FOOD DISTRIBUTIONS



FUNDING



Protracted Relief & Recovery Operation 200988

December 2017 - May 2018

US\$181m
Net Funding Requirements

2017 operations
40% funded

Source: WFP, 21 November 2017

PROJECT FUNDING STATUS

Special Operation 200788 Logistics & Telecommunications Support to Humanitarian Operations in Syria (Jan 2015 - Dec 2017)

100%

US\$13.6m
Total Received until the end of 2017

US\$13.1m
Total Requirements in 2017

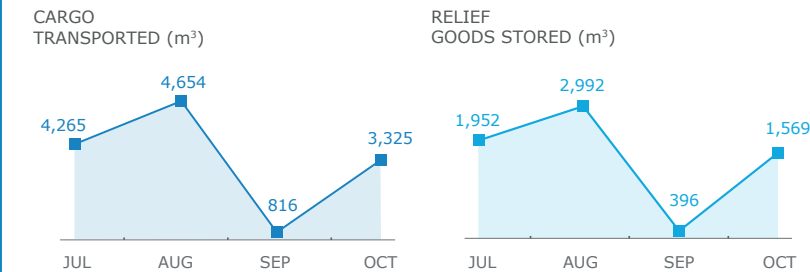
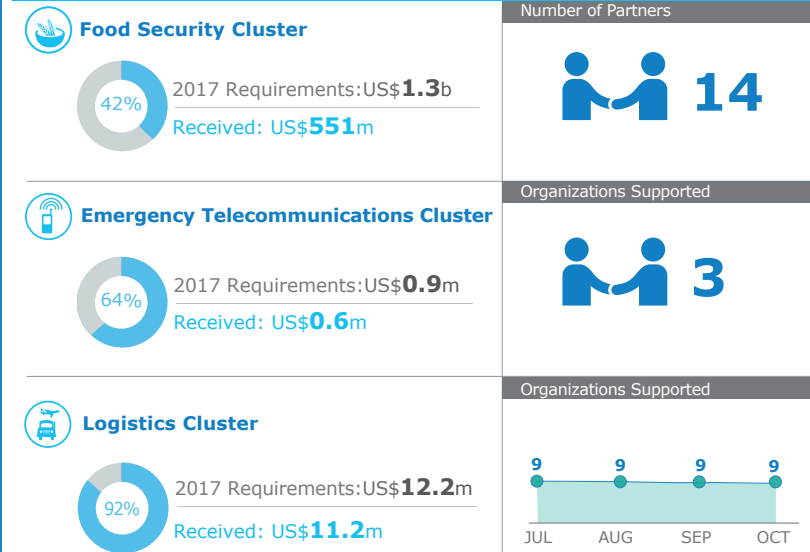
Source: PGG, 17 November 2017

6.1m
IDPs
(HNO, 2017)

3.0m in need in hard-to-reach and besieged areas (OCHA)

10.5m in need of Food & Livelihood Support (HNO, 2018)

WFP LED & CO-LED CLUSTERS



OCHA FTS, 14 November 2017; Clusters, 14 November 2017

WFP LEVEL 3 EMERGENCY

SINCE 14 DECEMBER 2012

IASC LEVEL 3 EMERGENCY

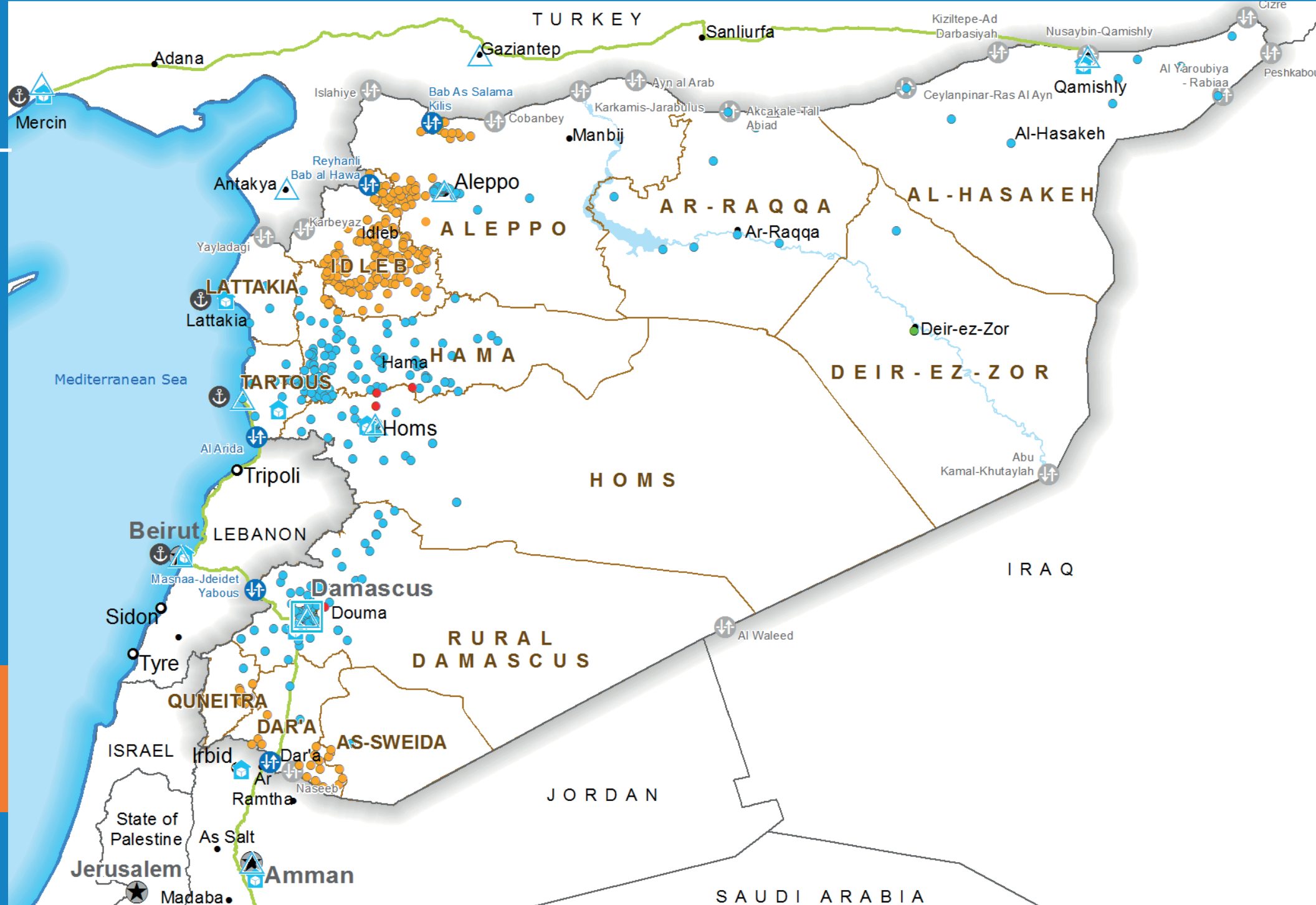
SINCE 15 JANUARY 2013

Check the **SITUATION REPORT**

<https://www.wfp.org/countries/syria>

Jointly produced by the WFP Operations Centre (OPSCEN), the WFP Syria Country Office and the WFP Cairo Regional Bureau

This dashboard is based on best available information at the time of production. Future updates may vary as new information becomes available.



- Country Office
- Sub Office
- Field Office
- Road Supply Route
- Warehouse
- Open Border Crossing Point
- Sporadically Open Border Crossing
- International Boundary
- Governorate Boundary
- National Capital
- Major Town
- Intermediate Town
- Port
- Food Distribution Points (FDP) September 2017
- FDP - Regular Deliveries
- FDP - Cross-line Deliveries
- FDP - Cross-border Deliveries

Sources: OCHA, WFP, GLCSC, UNGIWG, UNHCR, Geonames

The designations employed and the presentation of material in the map(s) do not imply the expression of any opinion on the part of WFP concerning the legal or constitutional status of any country, territory, city or sea, or concerning the delimitation of its frontiers or boundaries. ©World Food Programme 2017