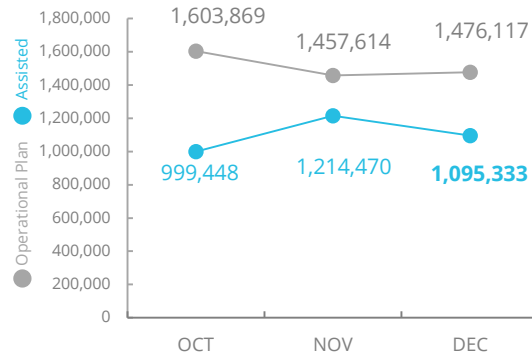




World Food Programme

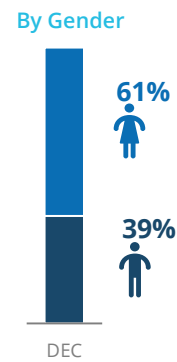
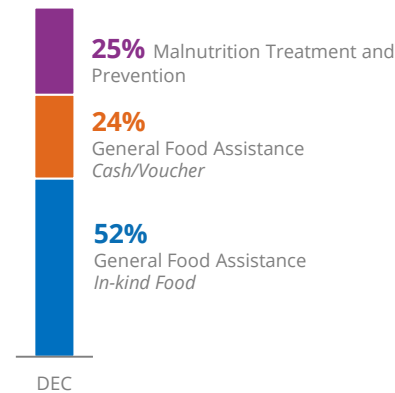
Democratic Republic of Congo

PEOPLE ASSISTED DR Congo Interim Country Strategic Plan (ICSP)



SOURCE: WFP, 18 FEB 2020

OPERATIONAL PROFILE By Activity

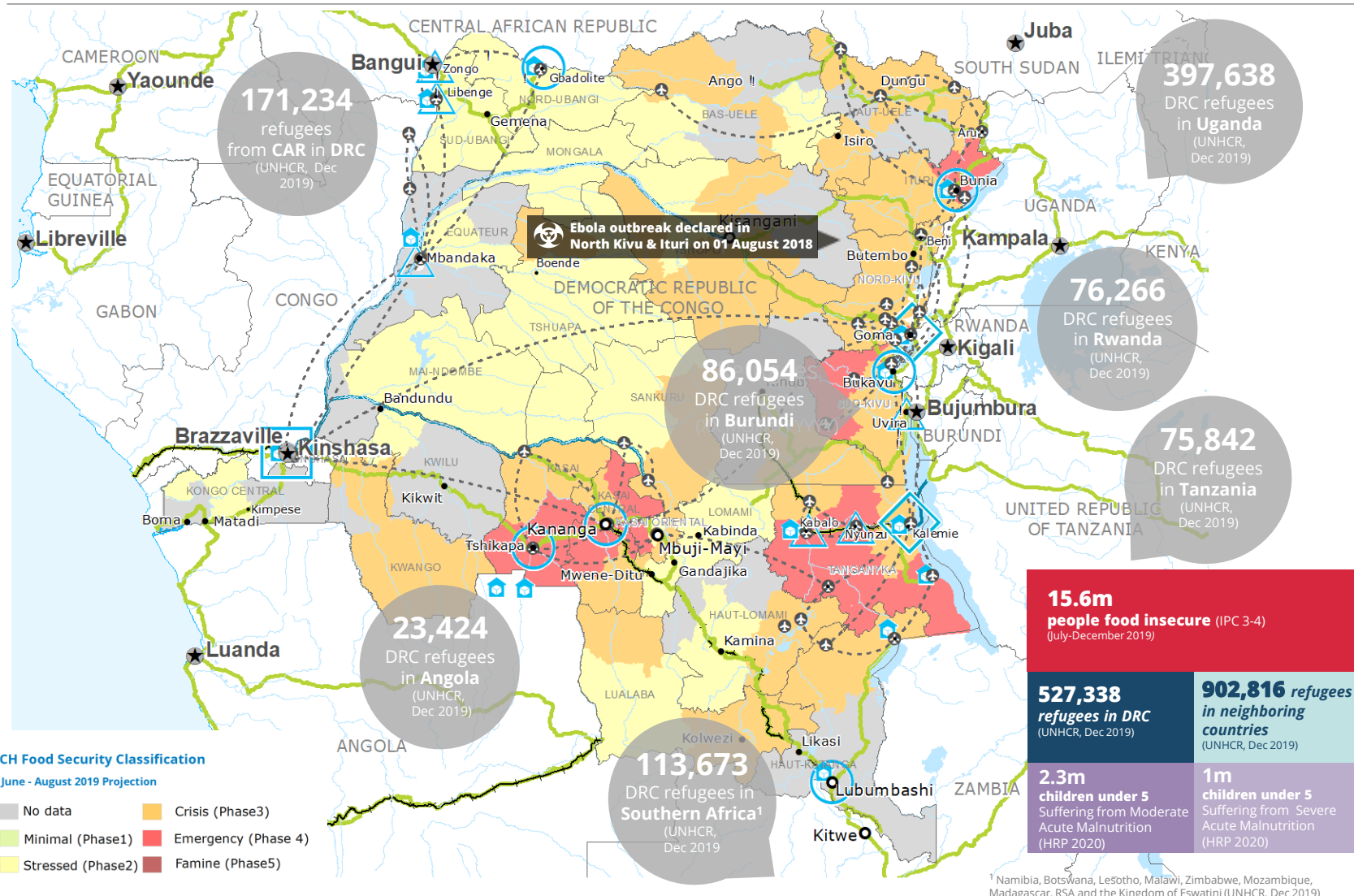
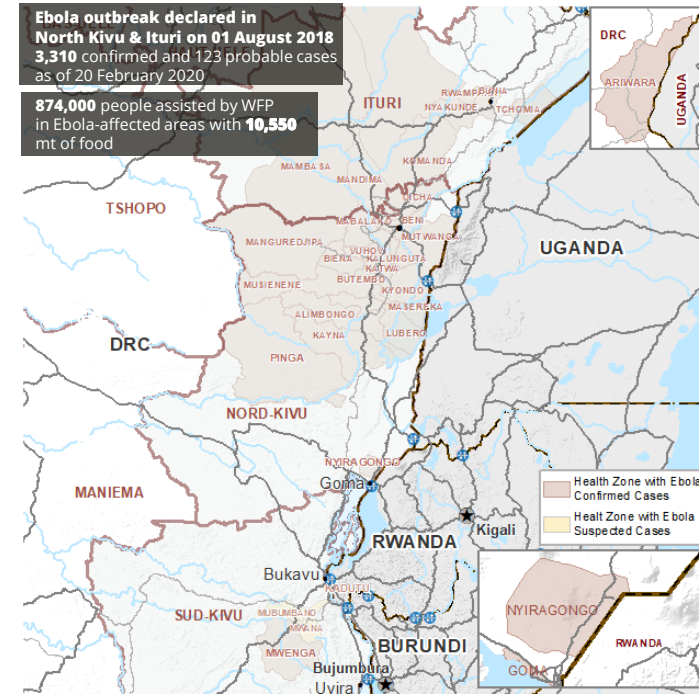


FUNDING DR Congo Level 3 Emergency Response

February - July 2020
US\$132m
Net funding requirements

SOURCE: WFP, 14 FEB 2020

EBOLA-AFFECTED HEALTH ZONES

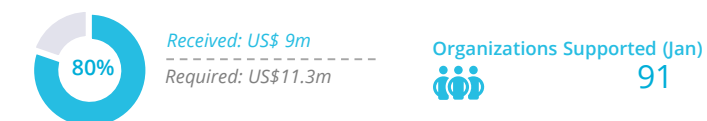


WFP-LED AND SUPPORTED CLUSTERS

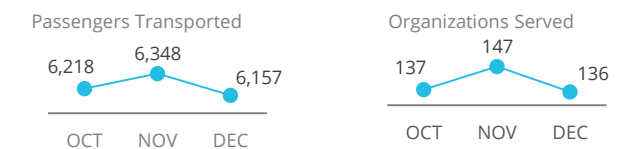
FOOD SECURITY AND LIVELIHOOD CLUSTER



LOGISTICS CLUSTER



UN HUMANITARIAN AIR SERVICES (UNHAS)



SOURCE: WFP, 30 JAN 2020

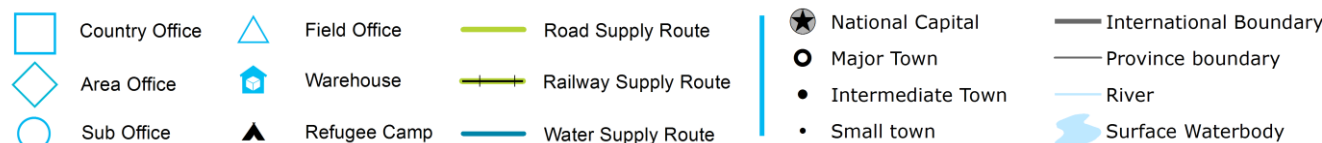
WFP LEVEL 3 EMERGENCY

SINCE 06 OCTOBER 2017
(LEVEL 2 EMERGENCY SINCE 12 DECEMBER 2013)

For more information, see the SITUATION REPORT and COUNTRY BRIEF
www.wfp.org/countries/congo-democratic-republic

DR Congo Interim Country Strategic Plan
https://documents.wfp.org/stellent/groups/public/documents/eb/wfp293190.pdf_ga=2.236369666.2010349590.1564781252.114077222.1558363945

Produced by the WFP Operations Centre (OPSCEN) jointly with Country Office and Regional Bureau Johannesburg. This dashboard is based on best available information at the time of production. Future updates may vary as new information becomes available.



Sources: WFP, UNGIWG, GAUL, GLCSC, OCHA, UNHCR, IPC.

The designations employed and the presentation of material in the map(s) do not imply the expression of any opinion on the part of WFP concerning the legal or constitutional status of any country, territory, city or sea, or concerning the delimitation of its frontiers or boundaries. © World Food Programme 2020.