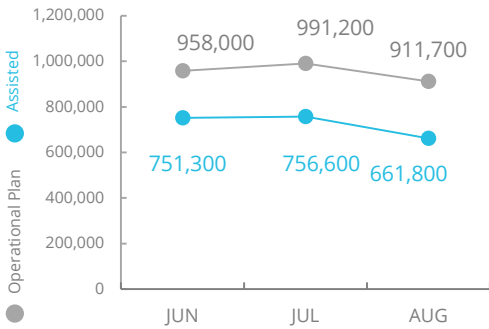


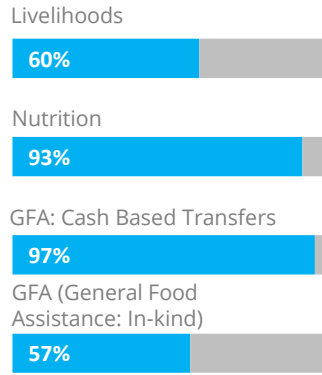
# Nigeria

## PEOPLE ASSISTED BY WFP



## OPERATIONAL PROFILE

People reached (August)



SOURCE: WFP, 31 AUG 2020

## COVID-19 Operational Impact

Assisted	Status	WFP Response
87,500	✓	Community-based activities: Ongoing
183,200	✓	Nutrition: Ongoing
299,500	✓	CBT: Ongoing
242,300	✓	Food Assistance: In-kind provided in the northeast

## FUNDING

Nigeria Country Strategic Plan

October 2020 – March 2021  
**Net funding requirements**

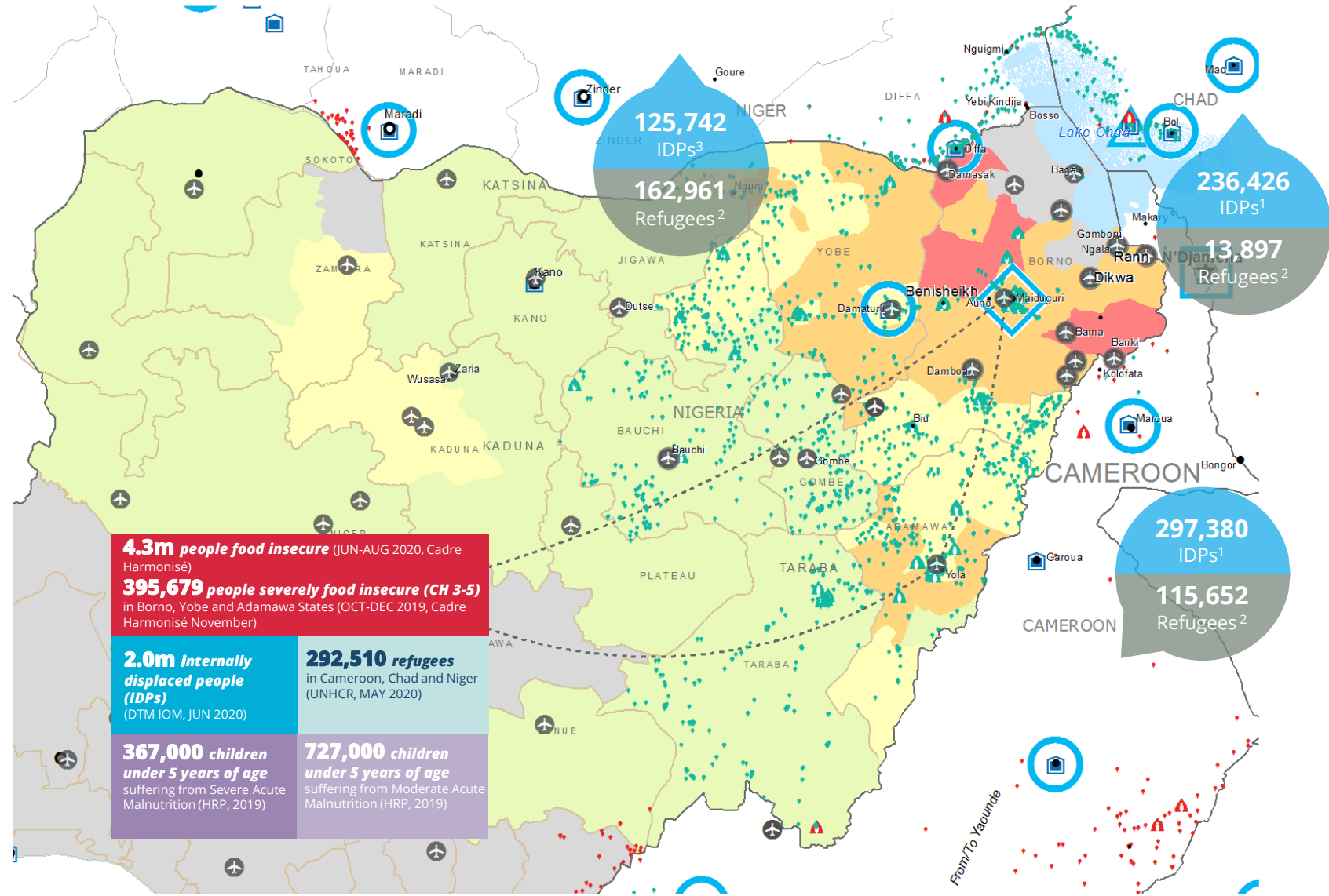
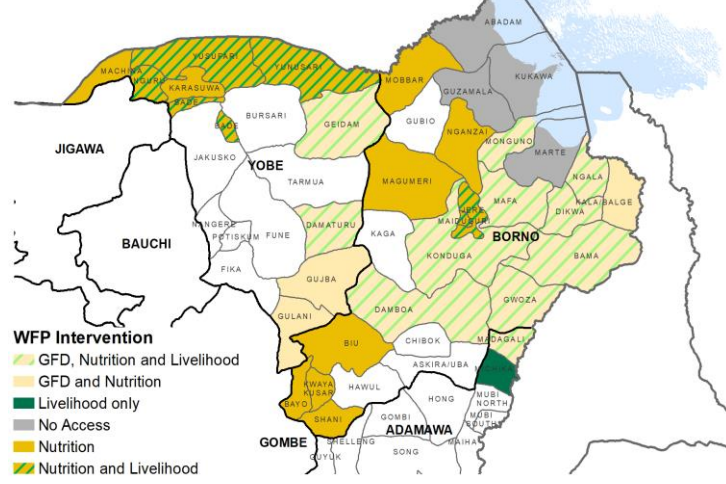
**US\$113m**

**2020 LEVEL 3 RESPONSE (Entire Country Strategic Plan)**  
Requirements: USD 288.3m  
Contributions: USD 268.1m



SOURCE: WFP, 24 SEP 2020

## WFP OPERATIONAL PRESENCE



**4.3m people food insecure** (JUN-AUG 2020, Cadre Harmonisé)  
**395,679 people severely food insecure (CH 3-5)** in Borno, Yobe and Adamawa States (OCT-DEC 2019, Cadre Harmonisé November)

**2.0m Internally displaced people (IDPs)** (DTM IOM, JUN 2020)  
**292,510 refugees** in Cameroon, Chad and Niger (UNHCR, MAY 2020)

**367,000 children under 5 years of age** suffering from Severe Acute Malnutrition (HRP, 2019)  
**727,000 children under 5 years of age** suffering from Moderate Acute Malnutrition (HRP, 2019)

**CH Food Security Classification** (June - August 2020)

- No data
- Minimal (Phase 1)
- Stressed (Phase 2)
- Crisis (Phase 3)
- Emergency (Phase 4)
- Famine (Phase 5)

**Country Office**

- Country Office
- Area Office
- Sub Office
- Field Office

**UNHAS Connection**

- UNHAS Connection
- Ad-Hoc Fixed-Wing Destination
- Ad-Hoc Rotary-Wing Destination
- Warehouse

**IDP Camp**

- IDP Camp
- IDP Center
- IDP Location

**Refugee Camp**

- Refugee Camp
- Refugee Center
- Refugee Location

**National Capital**

- National Capital
- Major Town
- Intermediate Town
- Small town

**International Boundary**

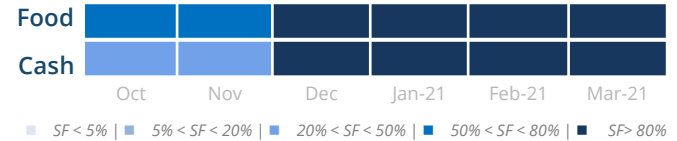
- International Boundary
- Province boundary
- River

Produced by the WFP Operations Centre (OPSCEN) jointly with Country Office and Regional Bureau Dakar. This dashboard is based on best available information at the time of production. Future updates may vary as new information becomes available.

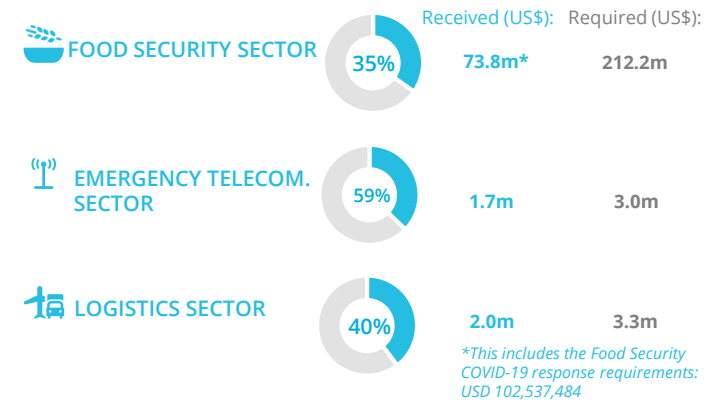
## AVERAGE MONTHLY FUNDING REQUIREMENTS (US\$)

**13.5m** (Food)      **16.3m** (Cash)

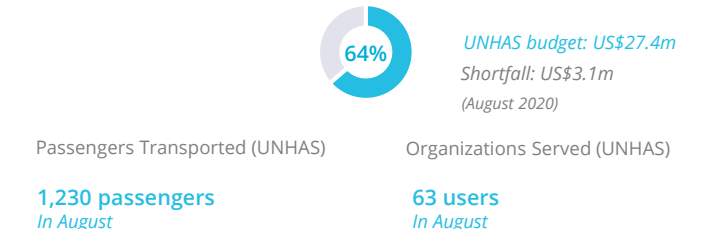
### EXPECTED SHORTFALLS



## WFP-LED AND CO-LED SECTORS



## UN HUMANITARIAN AIR SERVICE (UNHAS)



**WFP LEVEL 3 EMERGENCY SINCE 11 AUGUST 2016**

SITUATION REPORT and COUNTRY BRIEF

SOURCE: WFP, 02 OCT 2020

SOURCE: WFP, OCT 2020; FSC, OCT 2020

SOURCE: WFP, 31 AUG 2020