



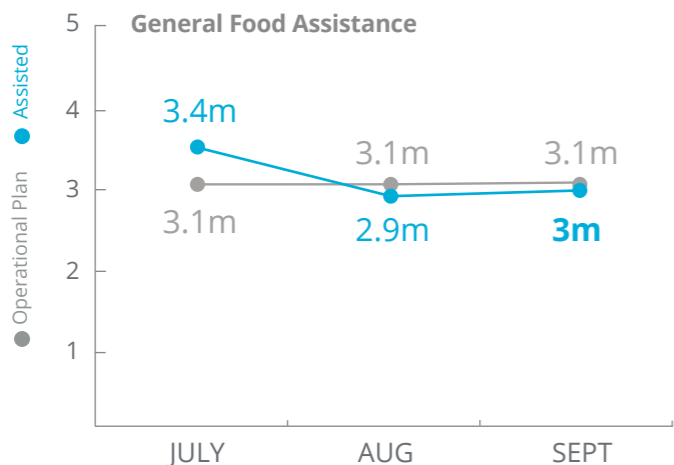
World Food Programme

Syria



PEOPLE ASSISTED

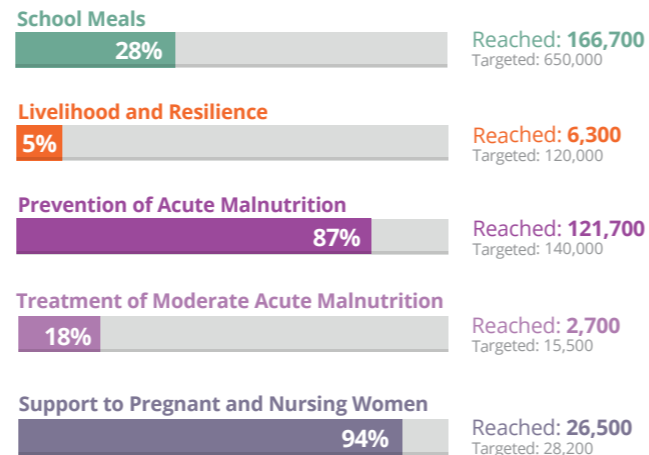
Syria Transitional Interim Country Strategic Plan



SOURCE: WFP, 25 OCTOBER 2018

OTHER ACTIVITIES

September 2018



FUNDING

Syria Transitional Interim Country Strategic Plan

November 2018 – April 2019

US\$135.9m

Net funding requirement

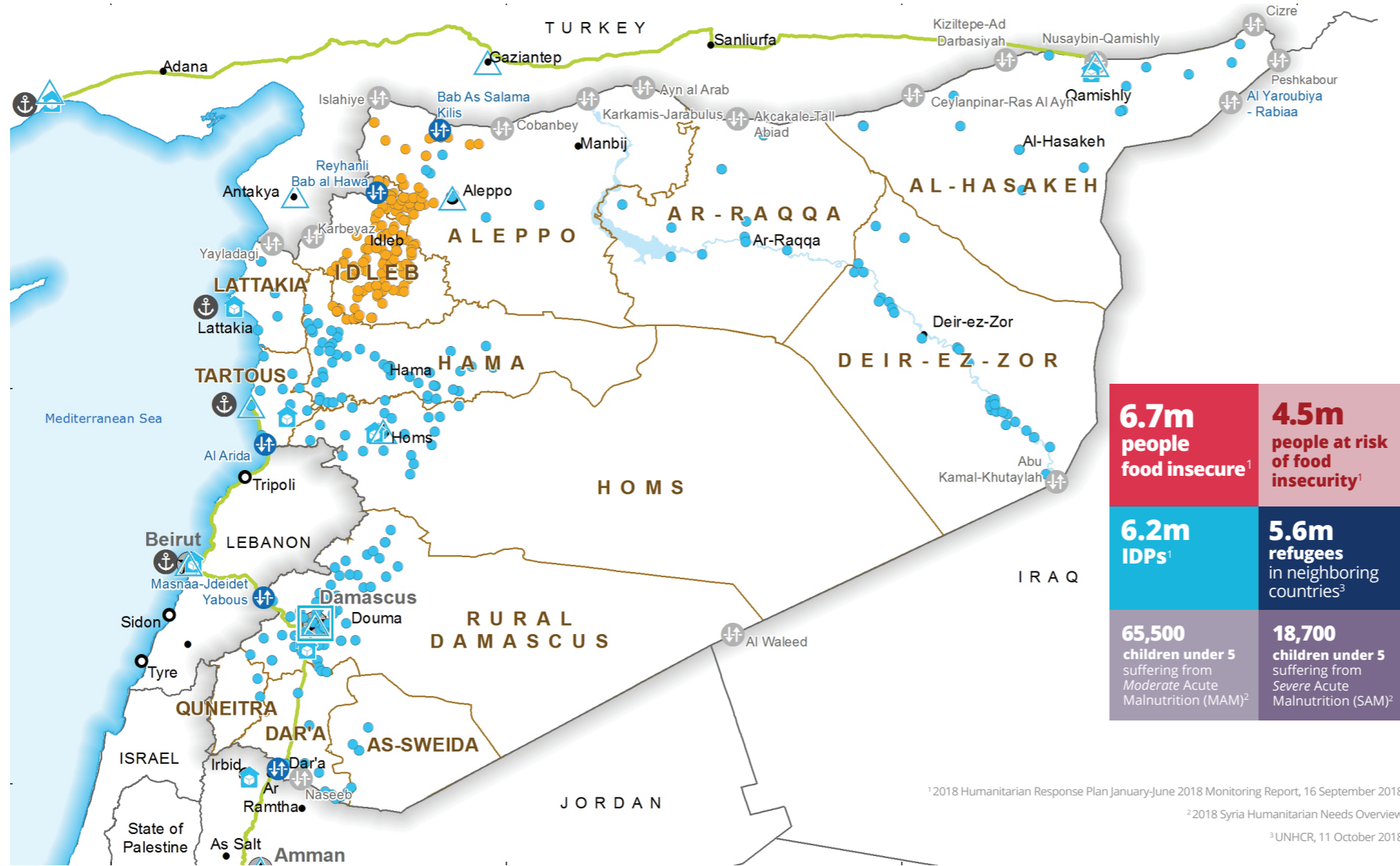
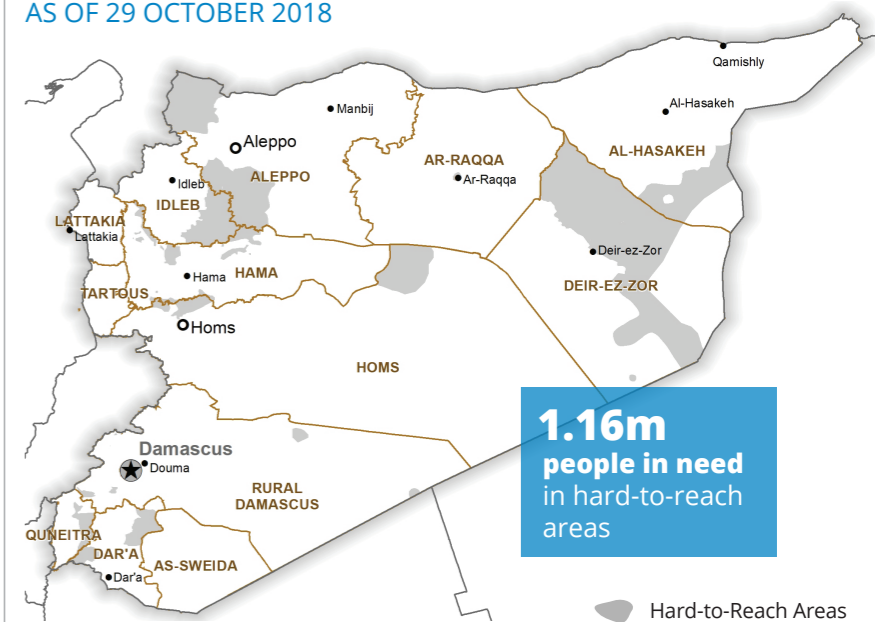
2018 LEVEL 3 RESPONSE



SOURCE: WFP, 25 OCTOBER 2018

HARD-TO-REACH AREAS

AS OF 29 OCTOBER 2018



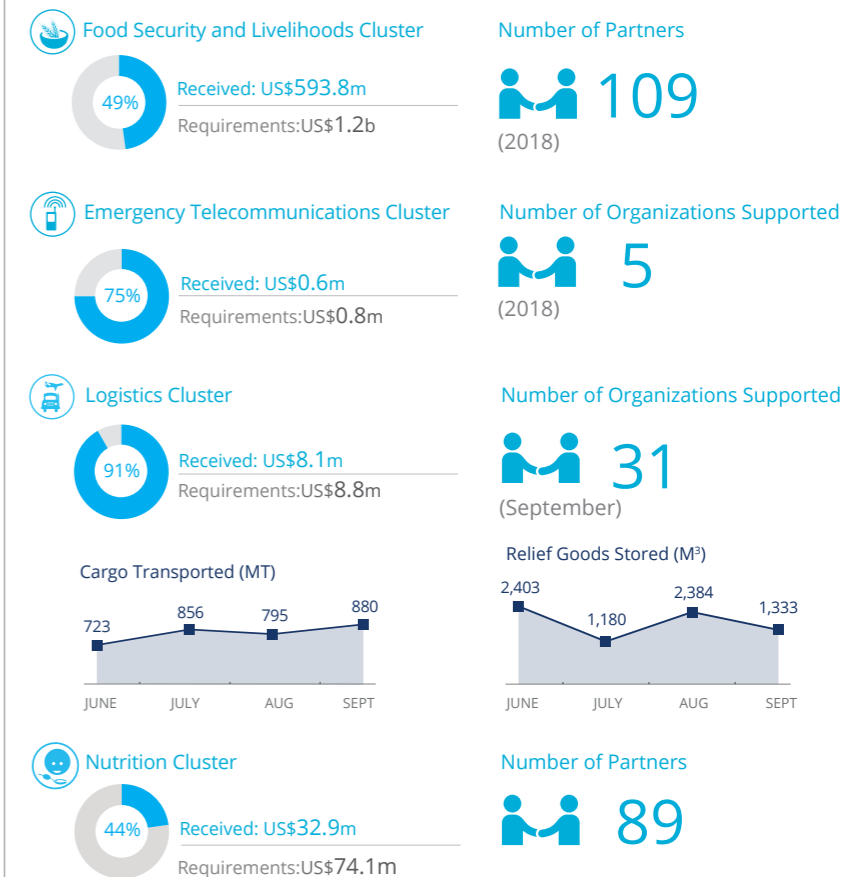
6.7m people food insecure ¹	4.5m people at risk of food insecurity ¹
6.2m IDPs ¹	5.6m refugees in neighboring countries ³
65,500 children under 5 suffering from Moderate Acute Malnutrition (MAM) ²	18,700 children under 5 suffering from Severe Acute Malnutrition (SAM) ²

¹ 2018 Humanitarian Response Plan January-June 2018 Monitoring Report, 16 September 2018

² 2018 Syria Humanitarian Needs Overview

³ UNHCR, 11 October 2018

WFP-LED AND SUPPORTED CLUSTERS



SOURCES: OCHA FTS, 30 OCTOBER 2018; CLUSTERS, 09 OCTOBER 2018

WFP LEVEL 3 EMERGENCY

SINCE 14 DECEMBER 2012

IASC LEVEL 3 EMERGENCY SINCE 15 JANUARY 2013

For more information, see the SITUATION REPORT and COUNTRY BRIEF www.wfp.org/countries/syria

2A Syria Transitional Interim Country Strategic Plan
<http://documents.wfp.org/stellent/groups/public/documents/ep/WFP284303.pdf>

Produced by the WFP Operations Centre (OPSCEN) jointly with Country Office and Regional Bureau Dakar. This dashboard is based on best available information at the time of production. Future updates may vary as new information becomes available.

- Food Distribution Points (FDP) (September 2018)**
- FDP Regular Deliveries
- FDP Cross-line Deliveries
- FDP Cross-border Deliveries
- Country Office
- Sub Office
- Field Office
- Warehouse
- Road Supply Route
- Open Border Crossing Point
- Sporadically Open Border Crossing Point
- Port
- National Capital
- Major Town
- Intermediate Town
- International Boundary
- Governor Boundary
- River
- Surface Waterbody

Sources: OCHA, WFP, GLCS, UNGIWG, UNHCR, Geonames.

The designations employed and the presentation of material in the map(s) do not imply the expression of any opinion on the part of WFP concerning the legal or constitutional status of any country, territory, city or sea, or concerning the delimitation of its frontiers or boundaries. © World Food Programme 2018.