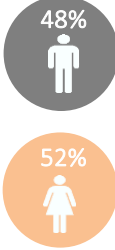
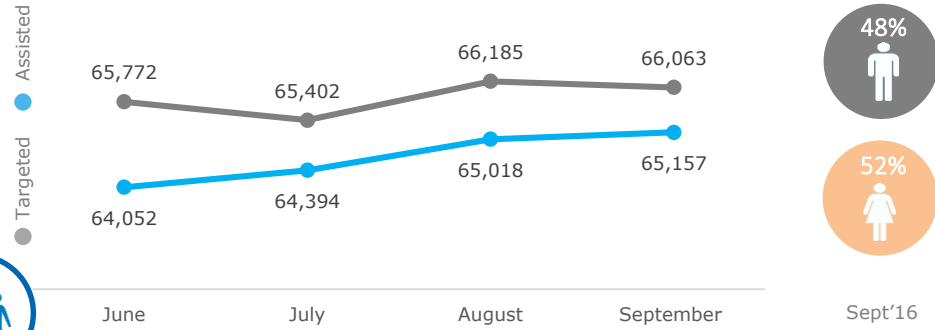
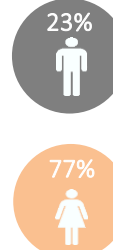
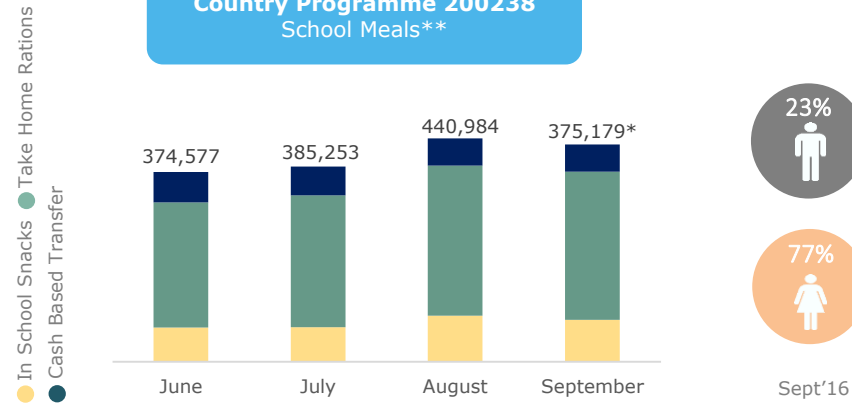


## BENEFICIARIES

### Emergency Operation 200433 Food Assistance to Vulnerable Syrian Populations



### Country Programme 200238 School Meals\*\*



\*Reconciliation for CBT cards in September ongoing.\*\* From June to September, WFP assisted school children and their family members in community schools that remained open during summer holidays.

## OPERATIONAL CHALLENGES

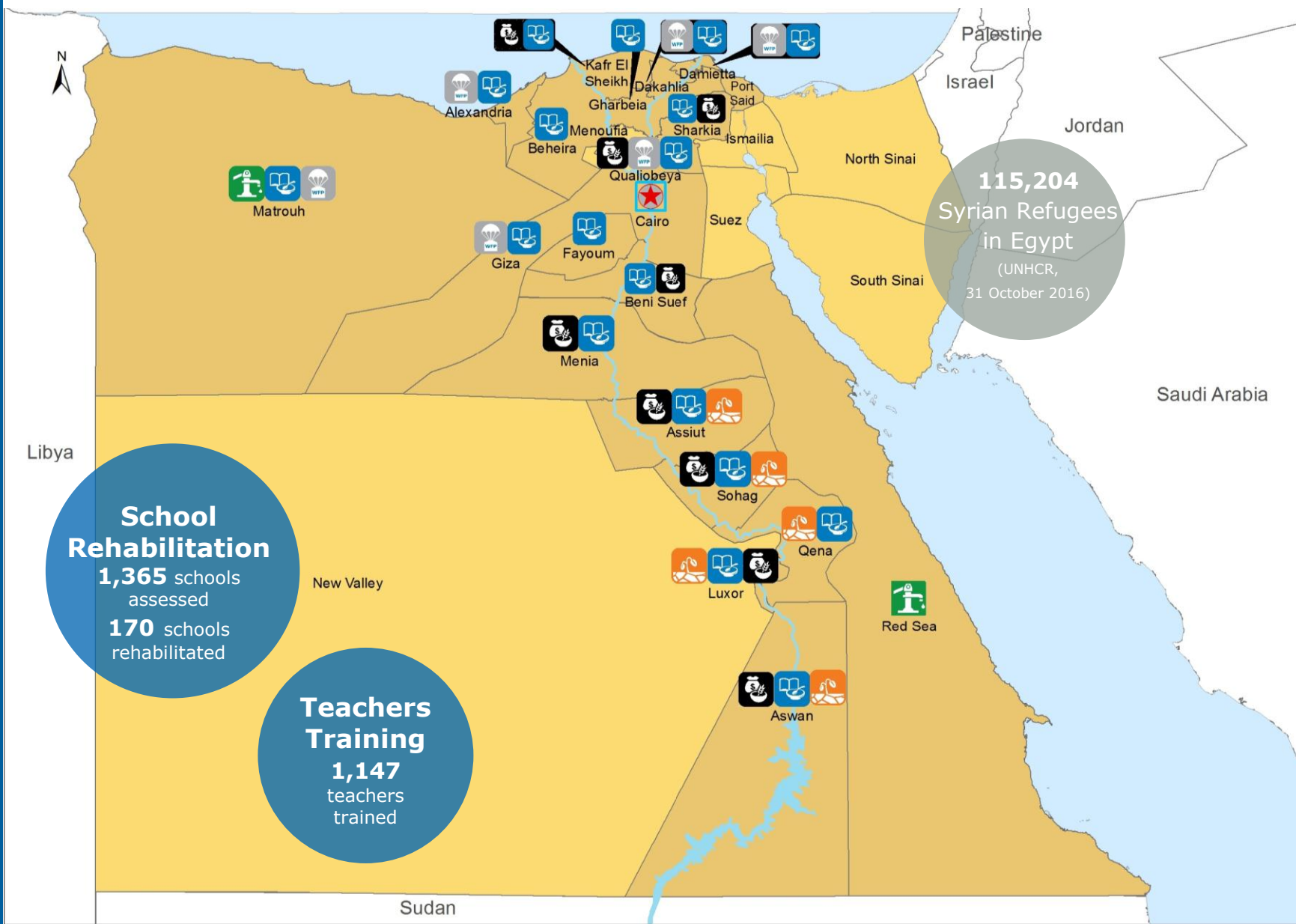


Economic Volatility



Supply Chain

# Egypt



### Livelihood for Education

**10,632** Mothers received 'Get Ahead for Women in Enterprise' Training (Oct'15-Sept'16)

### Food Assistance for Assets

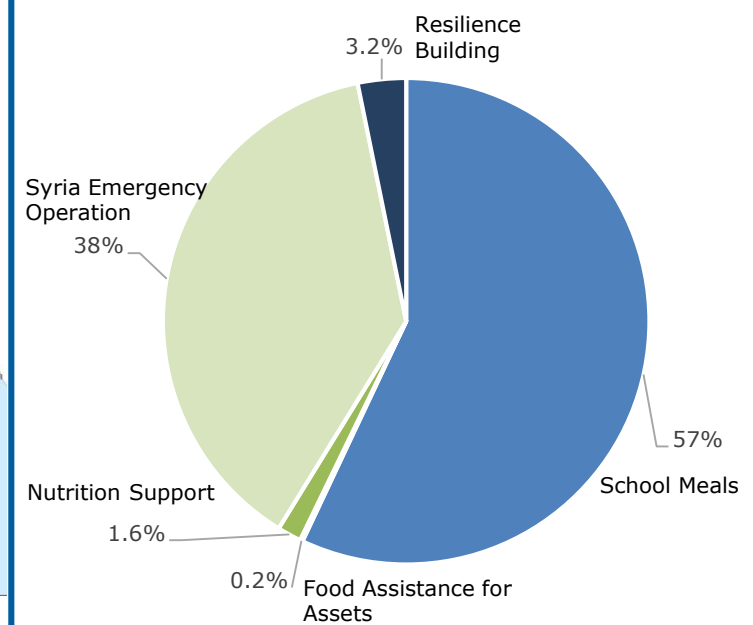
**1,300** People assisted with wheat flour and oil (Aug'16)

### Climate Change Adaptation

**1,544** Participants in resilience building activities (Sept'16)

## Operational Profile

Total Country Contribution Per Cost



- Governorates of Operation
- Other Governorates
- National Capital
- Country Office
- Climate Change Adaptation
- School Meals
- Syria Regional EMOP
- Livelihood for Education
- Food Assistance for Assets

**Data Sources:** WFP Egypt Country Office  
The boundaries and names and the designations used on this map do not imply official endorsement or acceptance by the United Nations

**Contact:** Information Management- Lara Atanasijevic (lara.atanasijevic@wfp.org); Communications- Amina Alkorey (amina.alkorey@wfp.org).  
**Further information:** www.wfp.org/countries/egypt