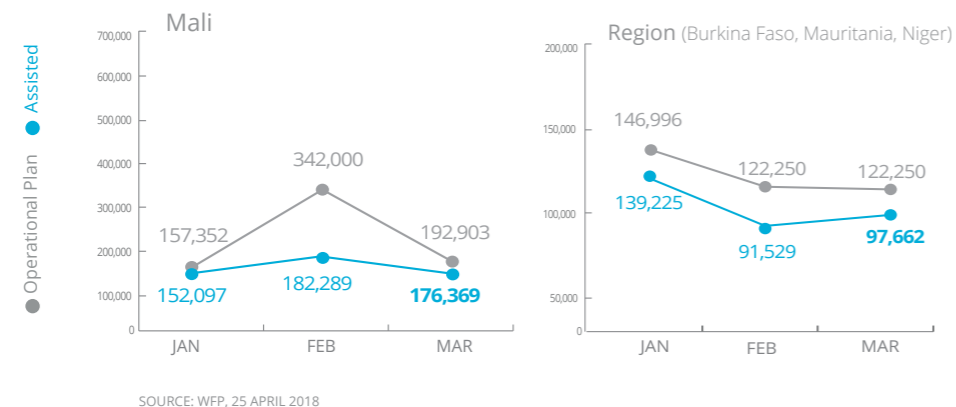


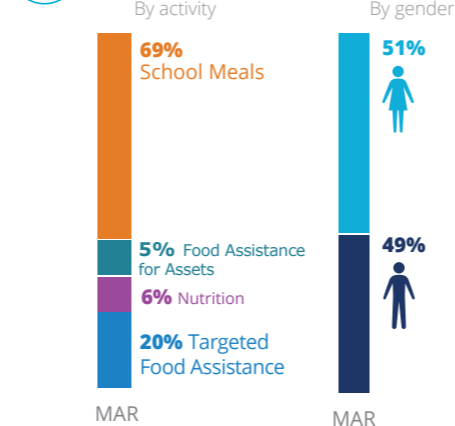
# Mali

## PEOPLE ASSISTED

Mali Transitional Interim Country Strategic Plan (T-ICSP)



## OPERATIONAL PROFILE



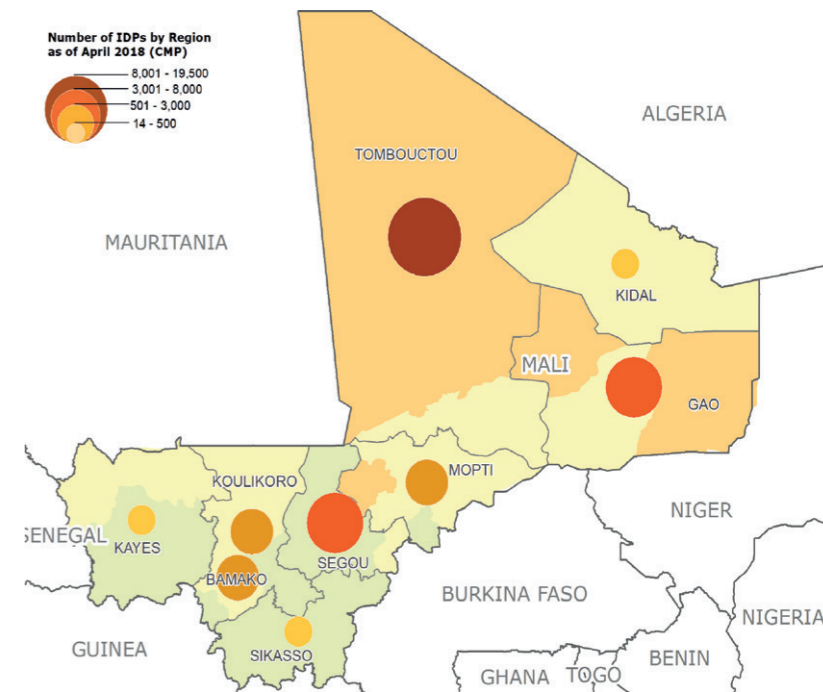
## FUNDING

Mali Transitional Interim Country Strategic Plan (T-ICSP)



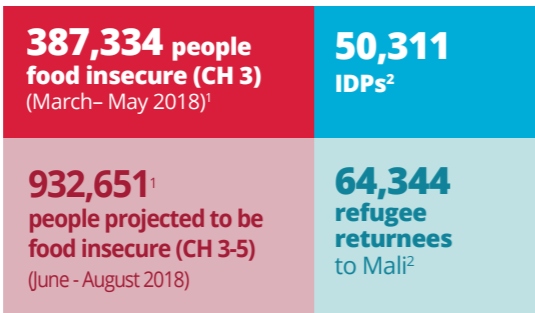
## IDP CONCENTRATION

AS OF 12 APRIL 2018

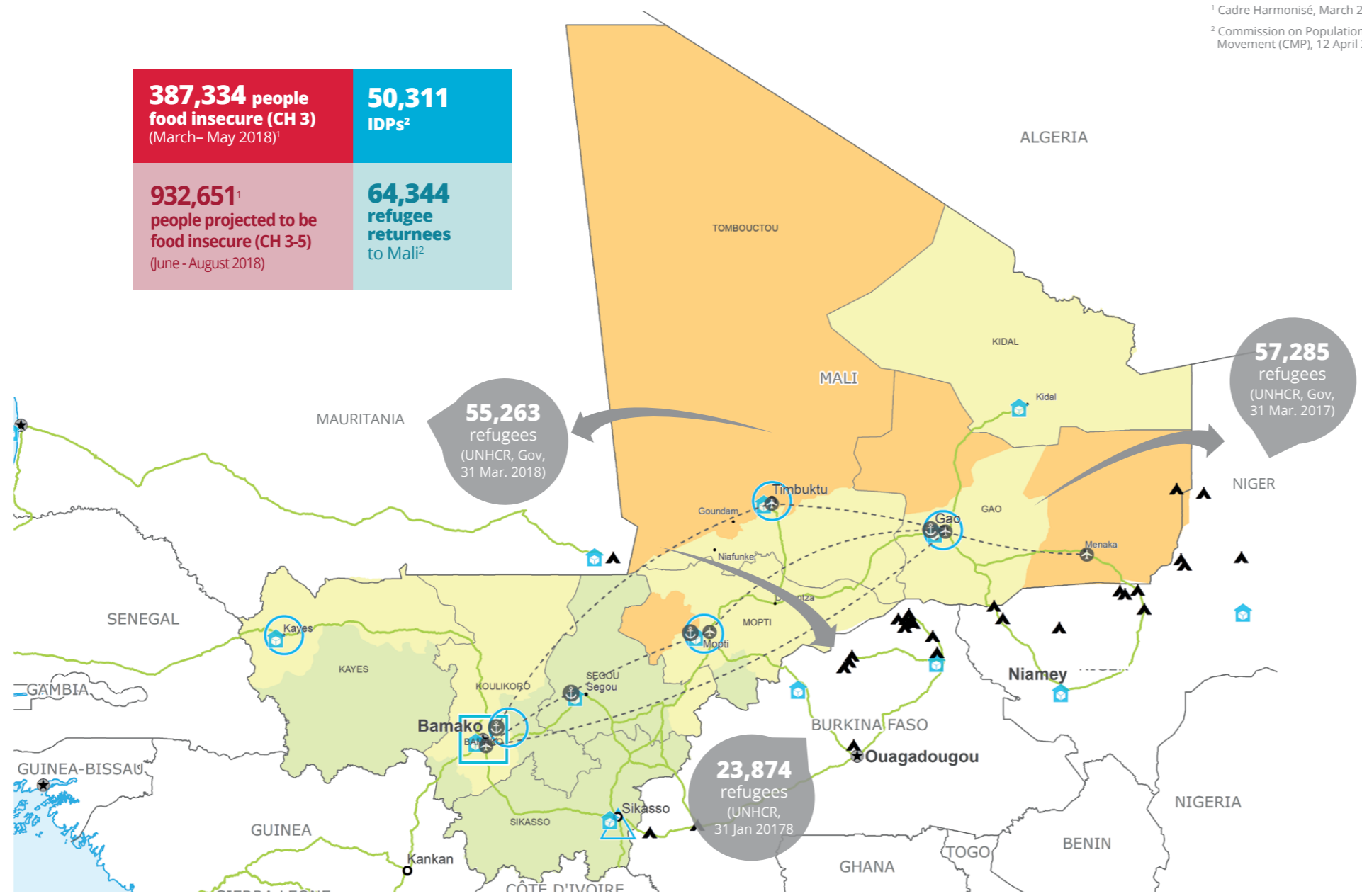


50,311 IDPs

SOURCE: CMP, 12 APRIL 2018



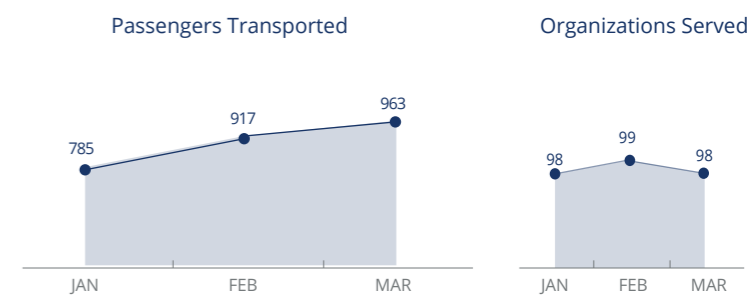
<sup>1</sup> Cadre Harmonisé, March 2018  
<sup>2</sup> Commission on Population Movement (CMP), 12 April 2018



## WFP LED & CO-LED CLUSTERS



## UN Humanitarian Air Service (UNHAS)



Sources: OCHA FTS, 25 APRIL 2018; WFP, 26 APRIL 2018

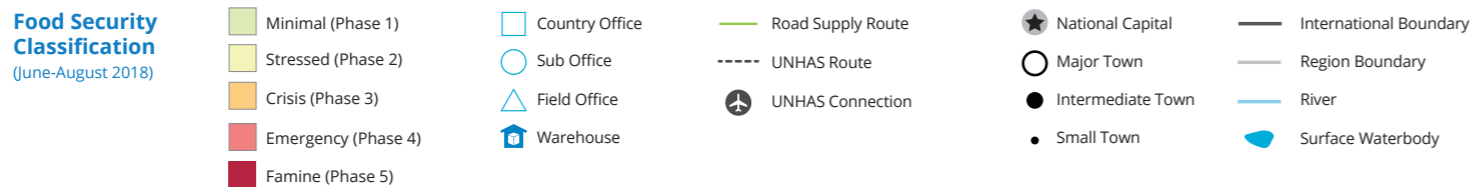
## WFP LEVEL 2 EMERGENCY

SINCE 12 JANUARY 2012

For more information, see the SITUATION REPORT and COUNTRY BRIEF [www.wfp.org/countries/mali](http://www.wfp.org/countries/mali)

**2A** Mali Transitional Interim Country Strategic Plan  
<http://documents.wfp.org/stellent/groups/public/documents/ep/WFP284303.pdf>

Produced by the WFP Operations Centre (OPSCEN) jointly with Country Office and Regional Bureau Dakar. This dashboard is based on best available information at the time of production. Future updates may vary as new information becomes available.



Sources: WFP, UNGIWG, GAUL, GLCS, OCHA, UNHCR.

The designations employed and the presentation of material in the map(s) do not imply the expression of any opinion on the part of WFP concerning the legal or constitutional status of any country, territory, city or sea, or concerning the delimitation of its frontiers or boundaries. © World Food Programme 2018.