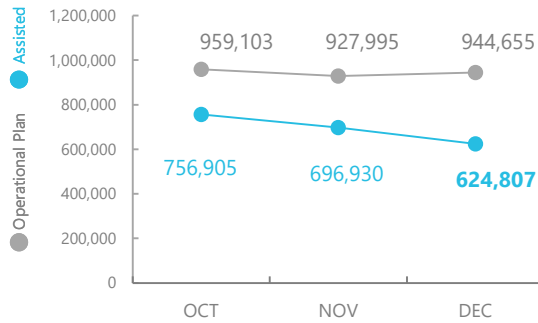
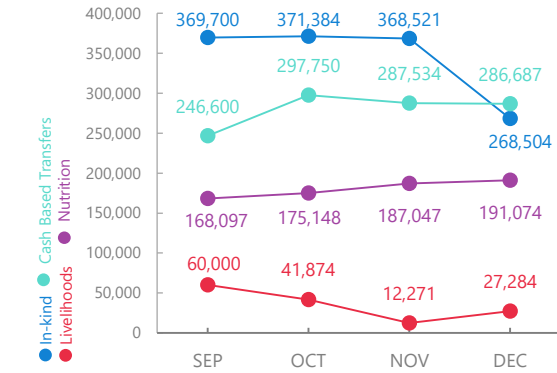


Nigeria

PEOPLE ASSISTED In Borno, Yobe and Adamawa States



OPERATIONAL PROFILE By Activity



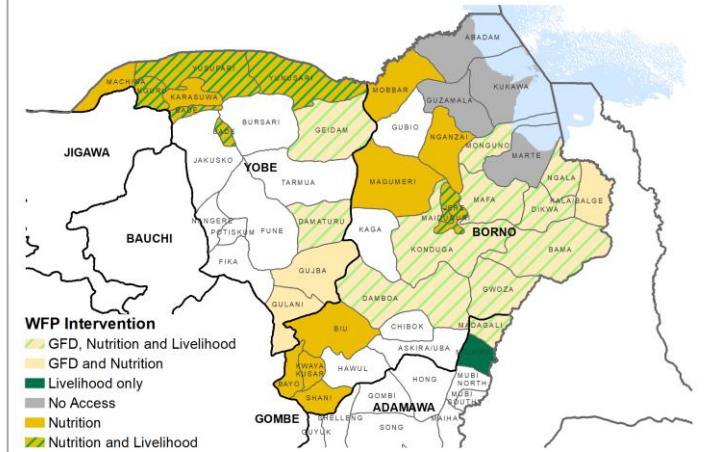
SOURCE: WFP, 31 JAN 2019

FUNDING Nigeria Country Strategic Plan (CSP)

February – July 2020
Net funding requirements
us\$90m

SOURCE: WFP, 14 FEB 2020

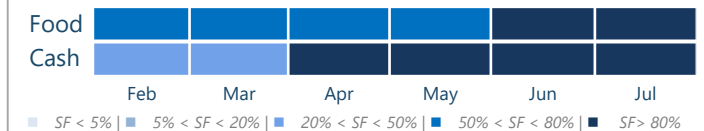
WFP OPERATIONAL PRESENCE



AVERAGE MONTHLY FUNDING REQUIREMENTS

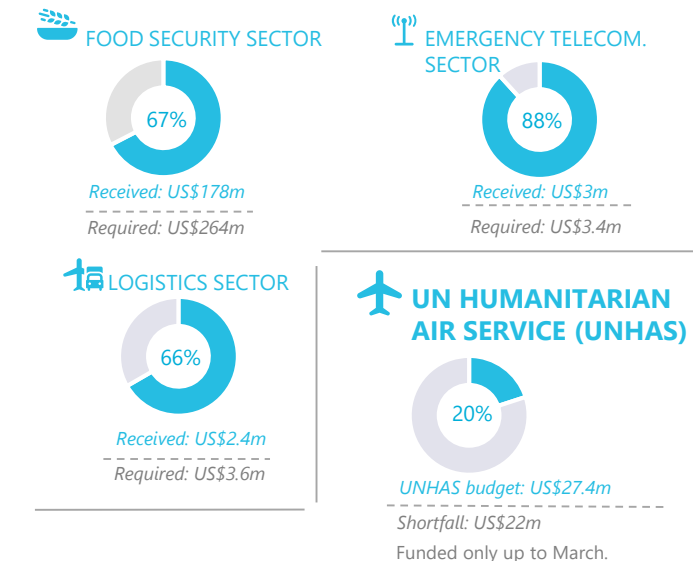
Food US\$ 11.2m **Cash US\$ 11.3m**

EXPECTED SHORTFALLS

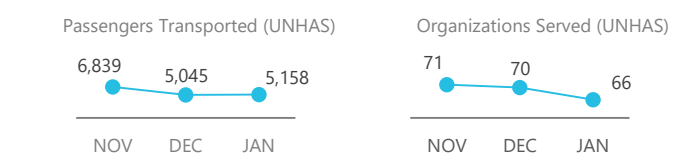


SOURCE: WFP, 07 FEB 2020

WFP-LED AND CO-LED SECTORS



SOURCE: WFP, 31 JAN 2020



SOURCE: WFP, 06 FEB 2020. Shortfalls exclude cost recovery

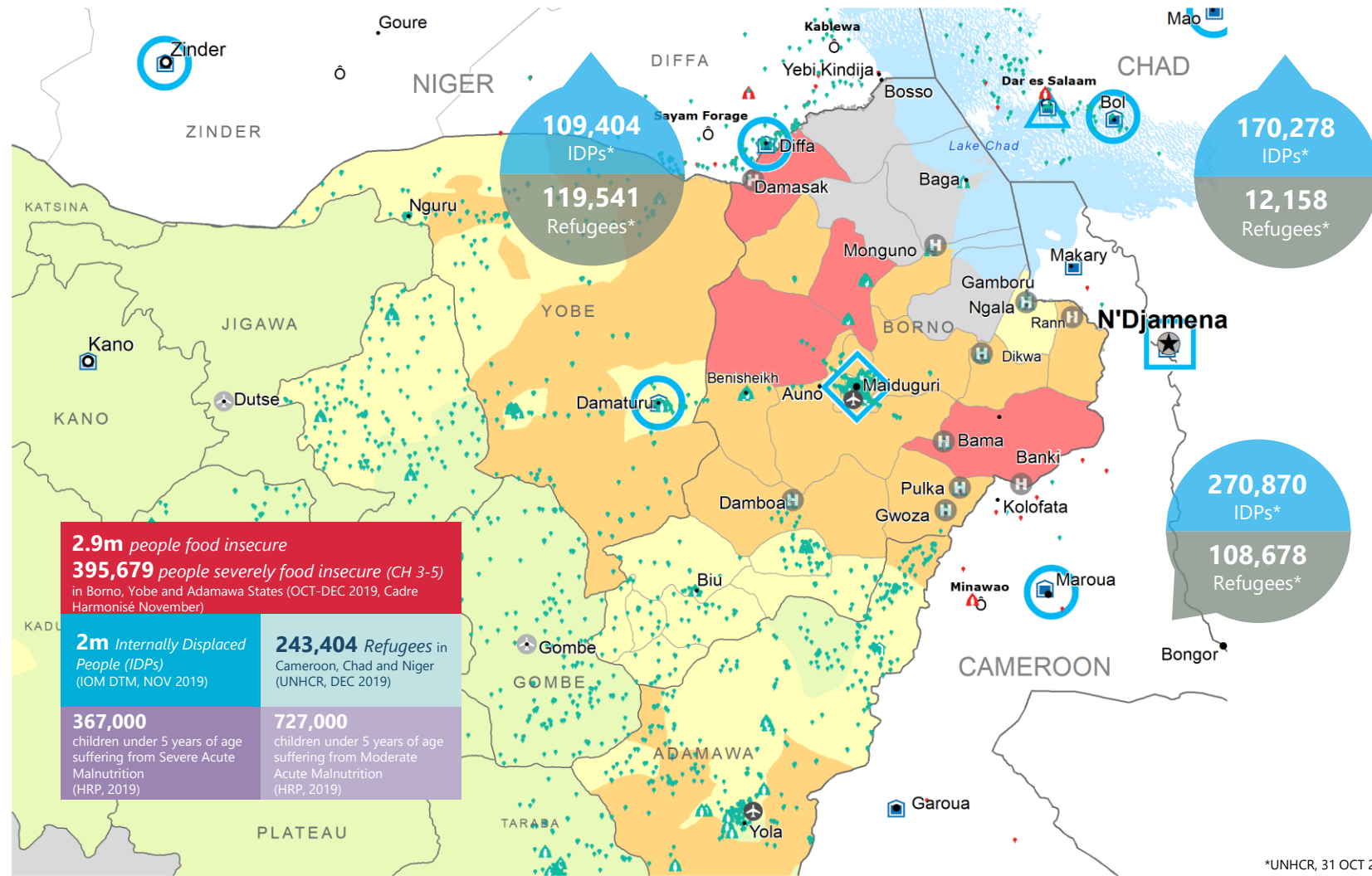
WFP LEVEL 3 EMERGENCY
SINCE 11 AUGUST 2016



For more information, see the [SITUATION REPORT](#) and [COUNTRY BRIEF](#)
<https://www1.wfp.org/countries/nigeria>

Nigeria Country Strategic Plan
https://docs.wfp.org/api/documents/WFP-0000101930/download?_ga=2.211211158.2010349590.1564781252.114077222.1558363545

Produced by the WFP Operations Centre (OPSCEN) jointly with Country Office and Regional Bureau Dakar. This dashboard is based on best available information at the time of production. Future updates may vary as new information becomes available.



*UNHCR, 31 OCT 2019

- CH Food Security Classification**
June - August 2020 Projection
- No data
- Minimal (Phase1)
- Stressed (Phase2)
- Crisis (Phase3)
- Emergency (Phase 4)
- Famine (Phase5)
- Country Office
- Area Office
- Sub Office
- Field Office
- UNHAS Connection
- Ad-Hoc Fixed-Wing Destination
- Ad-Hoc Rotary-Wing Destination
- Warehouse
- IDP Camp
- IDP Center
- IDP Location
- Refugee Camp
- Refugee Center
- Refugee Location
- National Capital
- Major Town
- Intermediate Town
- Small town
- International Boundary
- Province boundary
- River

Sources: WFP, UNGIWG, GAUL, GLCSC, OCHA, UNHCR.

The designations employed and the presentation of material in the map(s) do not imply the expression of any opinion on the part of WFP the delimitation of its frontiers or boundaries. © World Food Programme 2020.