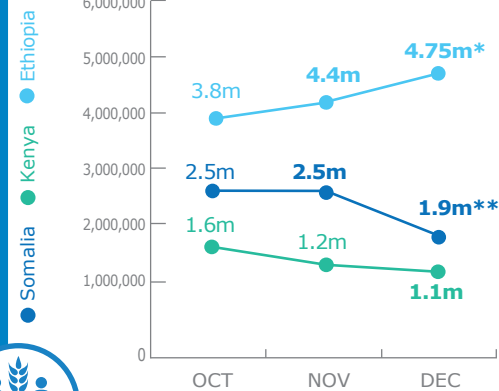


PEOPLE ASSISTED



* Estimated figures for Emergency Relief, Nutrition and Refugee operations as distributions are ongoing and/or reports are being consolidated
 ** Monthly beneficiary target reduced by 500,000 due to funding shortfalls

Source: WFP, 26 January 2018

OPERATIONAL PROFILE



RESPONSE ACTIVITIES

- General Food Distributions Somalia Kenya Ethiopia
- Cash-Based Transfers Somalia Kenya Ethiopia
- Food Assistance for Assets Somalia Kenya Ethiopia
- Nutrition Somalia Kenya Ethiopia
- School Meals Somalia Kenya Ethiopia
- Capacity-Building Kenya Ethiopia

FUNDING

- ### NET FUNDING REQUIREMENTS
- Somalia**
US\$ **130m**
February 2018 - July 2018
Net Funding Requirements
 - Ethiopia**
US\$ **132m***
January 2018 - June 2018
Net Funding Requirements
 - Kenya**
US\$ **21m**
January 2018 - June 2018
Net Funding Requirements

Note: Includes all Protracted Relief & Recovery Operations, Country Programme and Special Operations for the drought response across Ethiopia, Kenya and Somalia.
 *Includes WFP Relief, PSNP, Nutrition and Refugee requirements

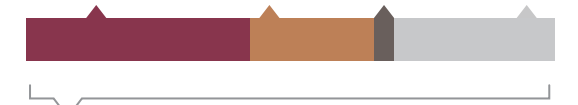
Source: WFP, 26 January 2018

2017/2018 HUMANITARIAN RESPONSE PLANS & CLUSTER REQUIREMENTS



SOMALIA HUMANITARIAN RESPONSE PLAN 2018

- FOOD SECURITY US\$ **632m**
- NUTRITION US\$ **254m**
- LOGISTICS US\$ **10m**
- OTHERS US\$ **540m**

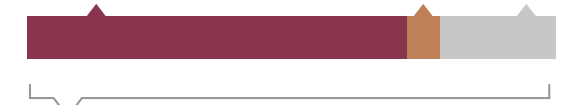


TOTAL APPEAL US\$1.5 billion **0.5%** Received: US\$7.7m

Source: OCHA, 29 January 2018

ETHIOPIA HUMANITARIAN REQUIREMENTS DOCUMENT 2017

- FOOD SECURITY US\$ **893m**
- NUTRITION US\$ **166m**
- OTHERS US\$ **341m**

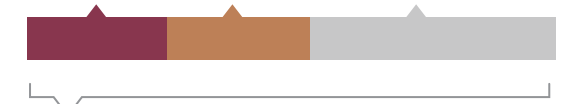


TOTAL APPEAL US\$1.4 billion **79%** Received: US\$1.1b

Source: OCHA, 29 January 2018

KENYA FLASH APPEAL 2017

- FOOD SECURITY US\$ **39.3m**
- NUTRITION US\$ **43.2m**
- OTHERS US\$ **83.2m**



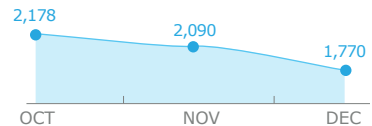
TOTAL APPEAL US\$205 million **60%** Received: US\$123m

Source: OCHA, 29 January 2018

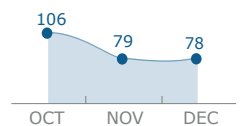
UN Humanitarian Air Service (UNHAS)

SOMALIA

Passengers Transported

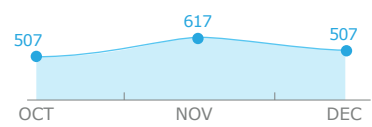


Organizations Supported

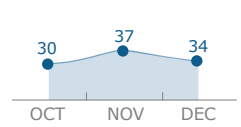


ETHIOPIA

Passengers Transported



Organizations Supported

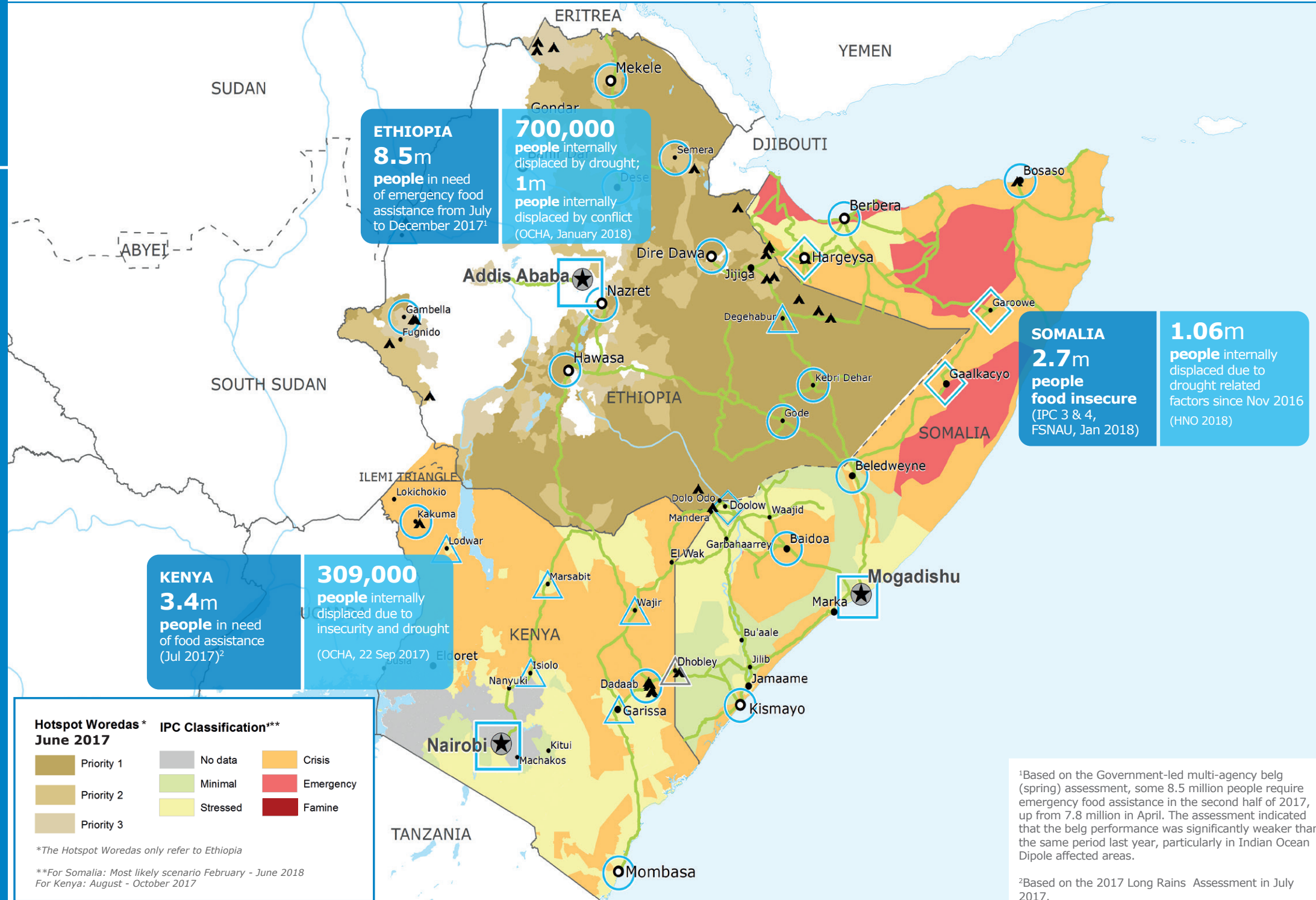


Source: WFP, 29 January 2018

WFP LEVEL 2 EMERGENCY SINCE 06 FEBRUARY 2017

For more information, see the **SITUATION REPORT** and **COUNTRY BRIEF** www.wfp.org

Produced by the WFP **Operations Centre (OPSCEN)** jointly with Country Offices and Regional Bureau Nairobi



Country Office	Sub Office	National Capital	Road Supply Route
Area Office	Field Office	Major Town	Refugee Camp
	Presence Office	Intermediate Town	International Boundary
		Small Town	Undetermined Boundary

Sources: WFP, UNGIWG, GAUL, GLCSC, UNHCR
 The designations employed and the presentation of material in the map(s) do not imply the expression of any opinion on the part of WFP concerning the legal or constitutional status of any country, territory, city or sea, or concerning the delimitation of its frontiers or boundaries. © World Food Programme 2018

This dashboard is based on best available information at the time of production. Future updates may vary as new information becomes available.

