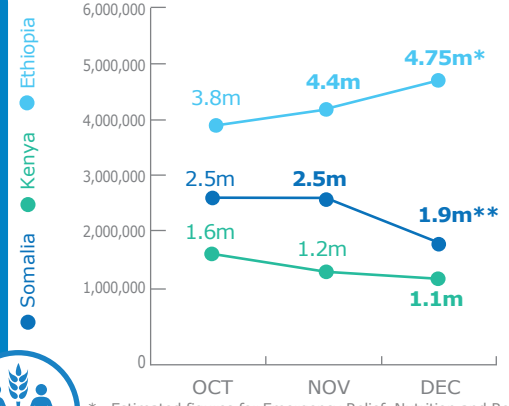


PEOPLE ASSISTED



* Estimated figures for Emergency Relief, Nutrition and Refugee operations as distributions are ongoing and/or reports are being consolidated
 ** Monthly beneficiary target reduced by 500,000 due to funding shortfalls

Source: WFP, 26 January 2018

OPERATIONAL PROFILE



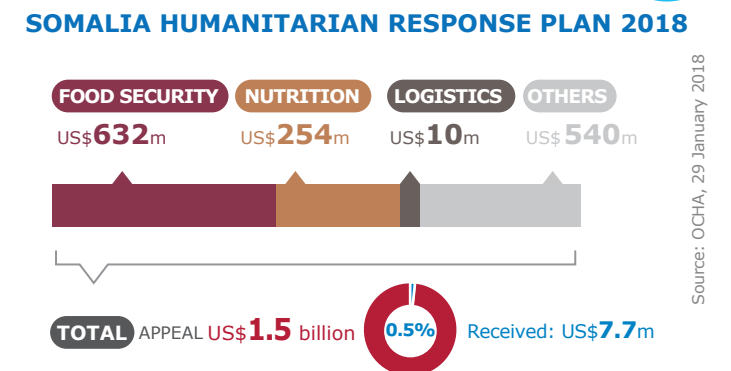
- ### RESPONSE ACTIVITIES
- General Food Distributions (Somalia, Kenya, Ethiopia)
 - Cash-Based Transfers (Somalia, Kenya, Ethiopia)
 - Food Assistance for Assets (Somalia, Kenya, Ethiopia)
 - Nutrition (Somalia, Kenya, Ethiopia)
 - School Meals (Somalia, Kenya, Ethiopia)
 - Capacity-Building (Kenya, Ethiopia)

FUNDING

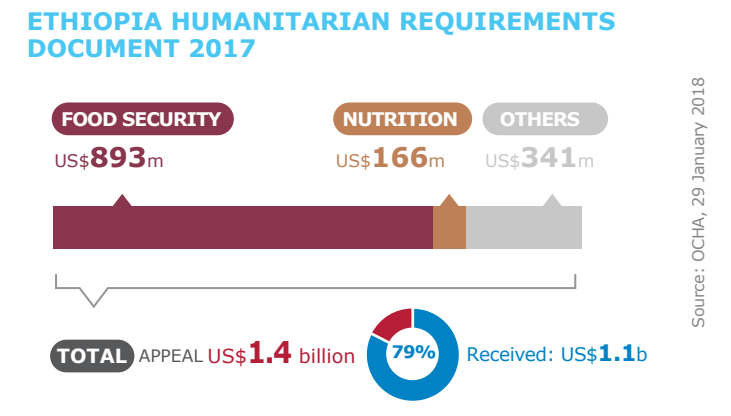
- ### NET FUNDING REQUIREMENTS
- Somalia** US\$130m February 2018 - July 2018 Net Funding Requirements
 - Ethiopia** US\$132m* January 2018 - June 2018 Net Funding Requirements
 - Kenya** US\$21m January 2018 - June 2018 Net Funding Requirements
- Note: Includes all Protracted Relief & Recovery Operations, Country Programme and Special Operations for the drought response across Ethiopia, Kenya and Somalia.
 *Includes WFP Relief, PSNP, Nutrition and Refugee requirements

Source: WFP, 26 January 2018

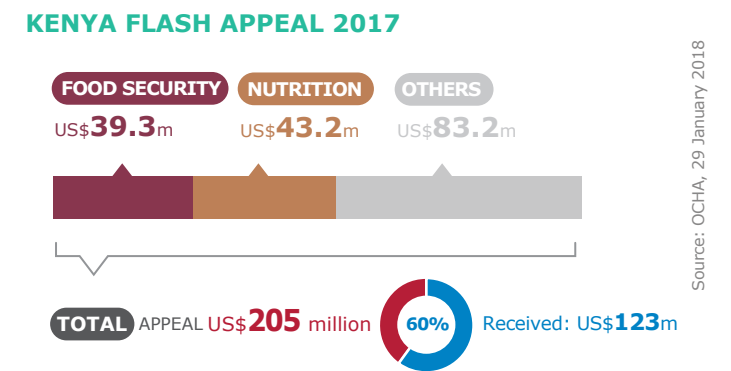
2017/2018 HUMANITARIAN RESPONSE PLANS & CLUSTER REQUIREMENTS



Source: OCHA, 29 January 2018

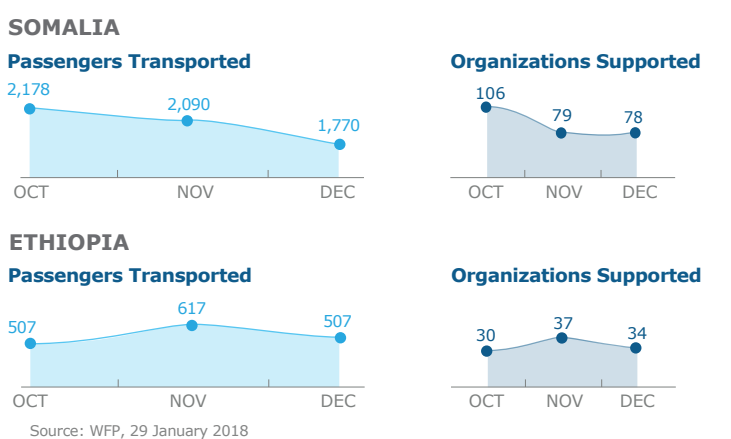


Source: OCHA, 29 January 2018



Source: OCHA, 29 January 2018

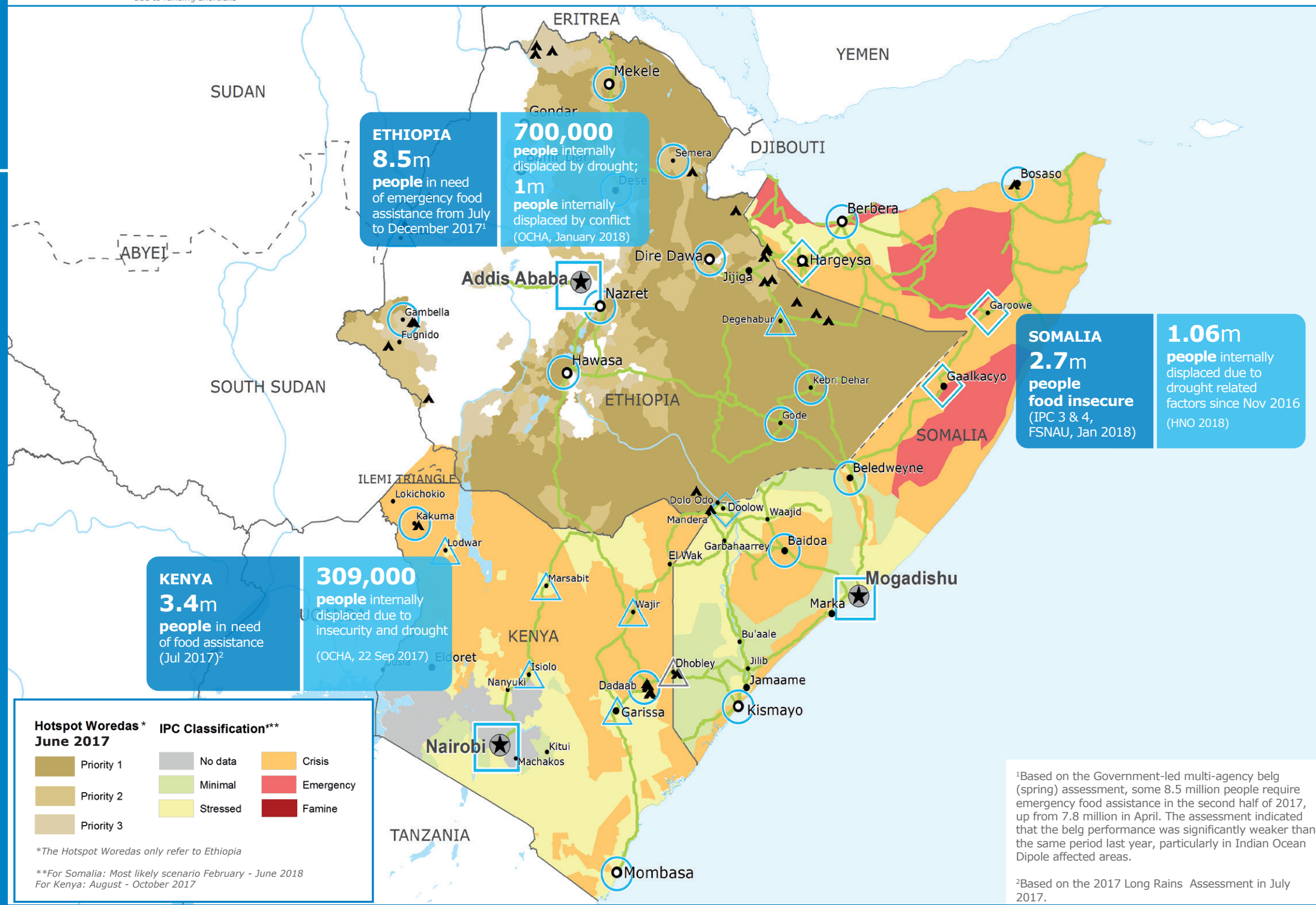
UN Humanitarian Air Service (UNHAS)



WFP LEVEL 2 EMERGENCY SINCE 06 FEBRUARY 2017

For more information, see the **SITUATION REPORT** and **COUNTRY BRIEF** www.wfp.org

Produced by the WFP **Operations Centre (OPSCEN)** jointly with Country Offices and Regional Bureau Nairobi



Country Office	Sub Office	National Capital	Road Supply Route
Area Office	Field Office	Major Town	Refugee Camp
	Presence Office	Intermediate Town	International Boundary
		Small Town	Undetermined Boundary

Sources: WFP, UNGIWG, GAUL, GLCSC, UNHCR
 The designations employed and the presentation of material in the map(s) do not imply the expression of any opinion on the part of WFP concerning the legal or constitutional status of any country, territory, city or sea, or concerning the delimitation of its frontiers or boundaries. © World Food Programme 2018

This dashboard is based on best available information at the time of production. Future updates may vary as new information becomes available.

