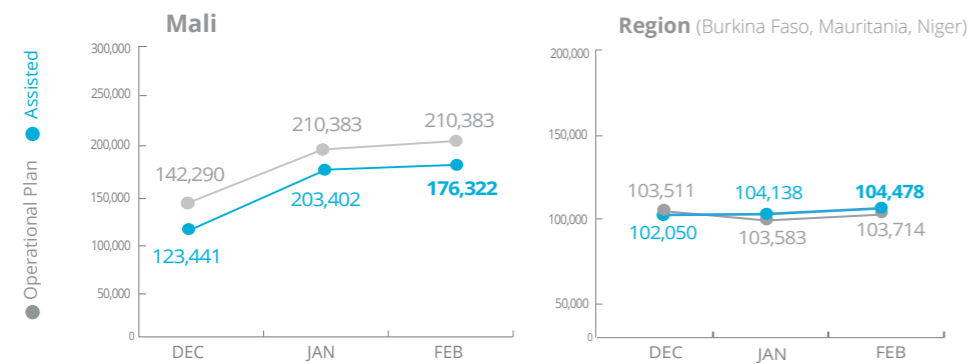


Mali

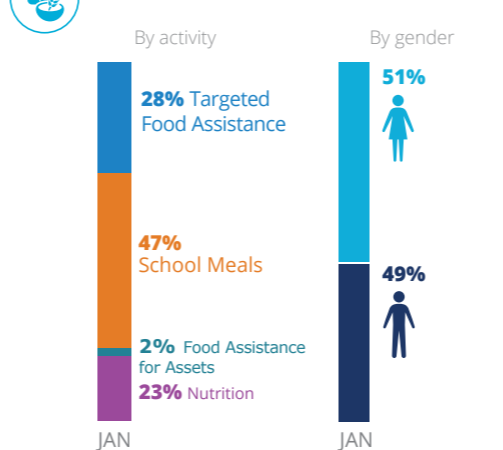


PEOPLE ASSISTED

Mali Transitional Interim Country Strategic Plan (T-ICSP)



OPERATIONAL PROFILE



FUNDING

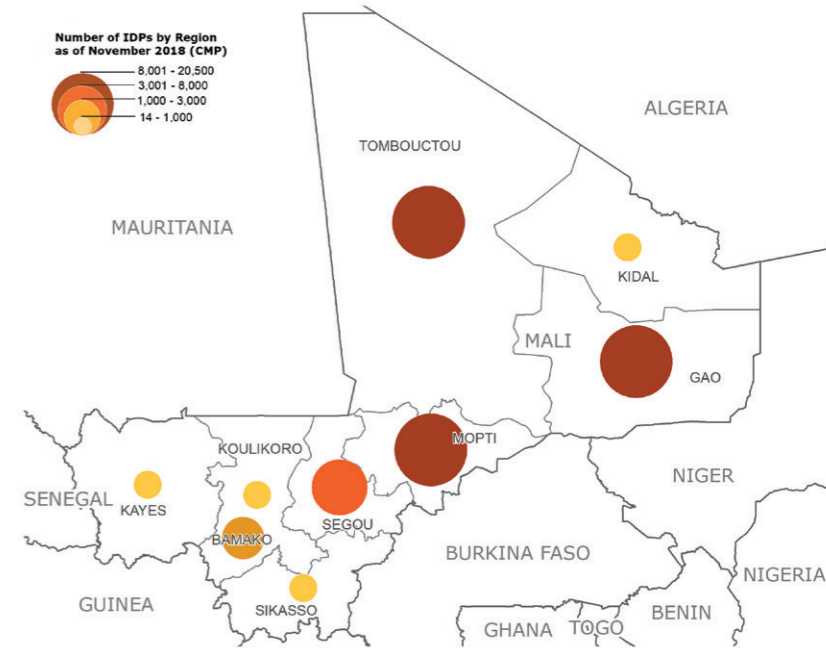
Mali Transitional Interim Country Strategic Plan (T-ICSP)

March - August 2019

US\$35.7m
Net funding requirement

IDP CONCENTRATION

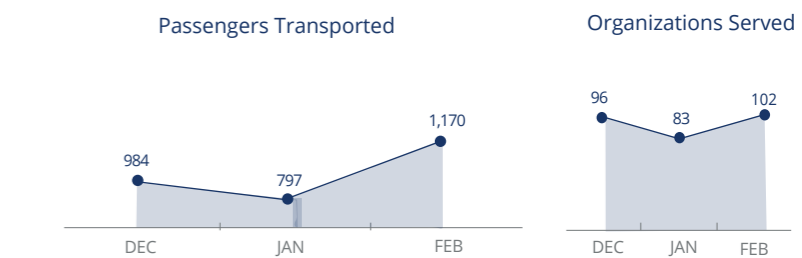
AS OF NOVEMBER 2018



WFP LED & CO-LED CLUSTERS



UN Humanitarian Air Service (UNHAS)



Sources: OCHA FTS, WFP, 28 MARCH 2019

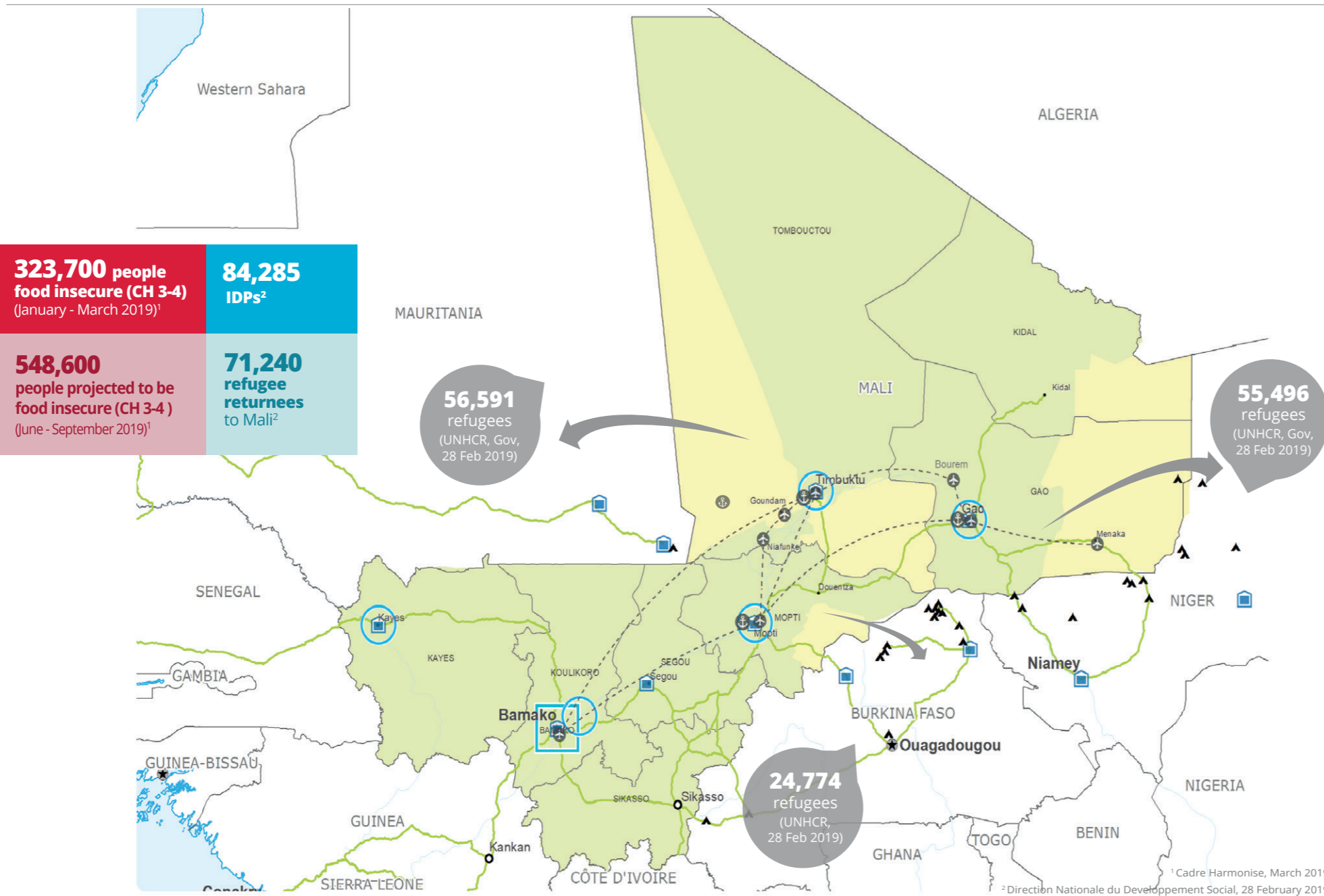
WFP LEVEL 2 EMERGENCY

SINCE 12 JANUARY 2012

For more information, see the SITUATION REPORT and COUNTRY BRIEF
www.wfp.org/countries/mali

Mali Transitional Interim Country Strategic Plan
<http://documents.wfp.org/stellent/groups/public/documents/ep/WFP284303.pdf>

Produced by the WFP Operations Centre (OPSCEN) jointly with Country Office and Regional Bureau Dakar. This dashboard is based on best available information at the time of production. Future updates may vary as new information becomes available.



CH Food Security Classification
October - December 2018 Projection

- Minimal (Phase 1)
- Stressed (Phase 2)
- Crisis (Phase 3)

- Country Office
- Sub Office
- Field Office
- Warehouse

- Road Supply Route
- UNHAS Route
- UNHAS Connection
- River Transport
- Refugee Camp

- National Capital
- Major Town
- Intermediate Town
- Small Town

- International Boundary
- Region Boundary
- River
- Surface Waterbody

Sources: WFP, UNGIWG, GAUL, GLCSC, OCHA, UNHCR.

The designations employed and the presentation of material in the map(s) do not imply the expression of any opinion on the part of WFP concerning the legal or constitutional status of any country, territory, city or sea, or concerning the delimitation of its frontiers or boundaries. © World Food Programme 2019.