

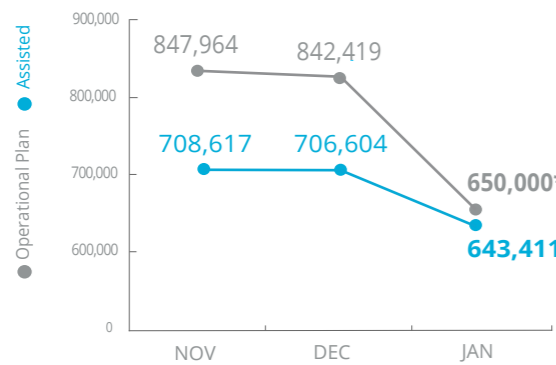


World Food Programme

Nigeria

PEOPLE ASSISTED

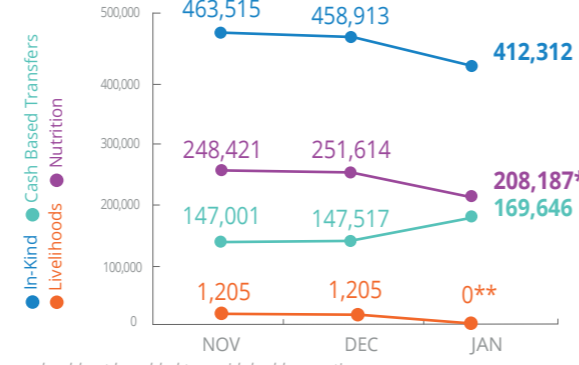
Borno, Yobe and Adamawa States



*Operational Plan revised under the Country Strategic Plan

OPERATIONAL PROFILE

by activity



Figures should not be added to avoid double-counting
* 159,797 beneficiaries of nutrition prevention and treatment and 48,400 of Multi-Sector Nutrition Prevention activities. ** Preparatory activities are on-going.

FUNDING

Nigeria Country Strategic Plan (CSP)

February - July 2019

Net funding requirement

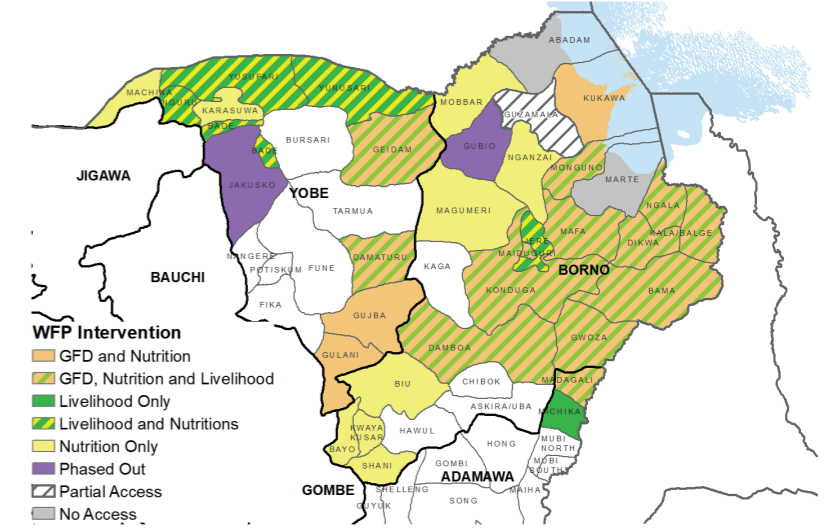
USD 33m

2019 LEVEL 3 RESPONSE

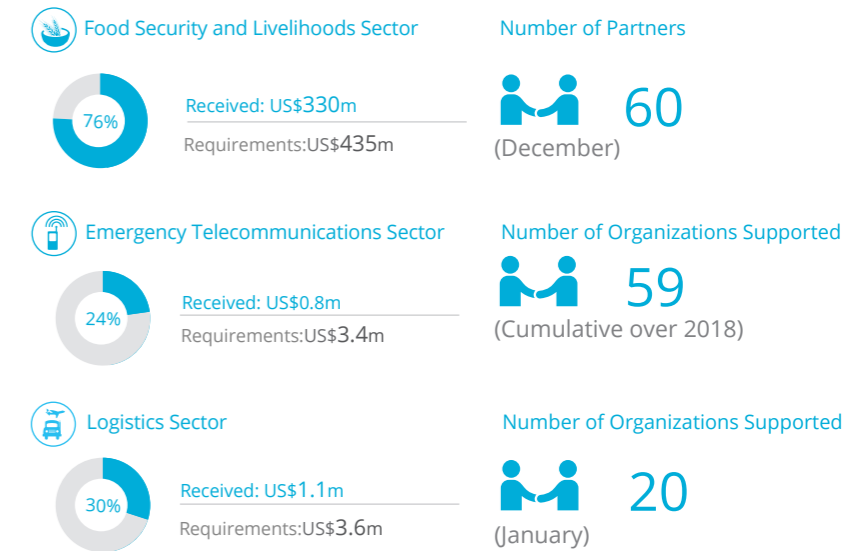
REQUIREMENTS: USD 242.7m

WFP OPERATIONAL PRESENCE

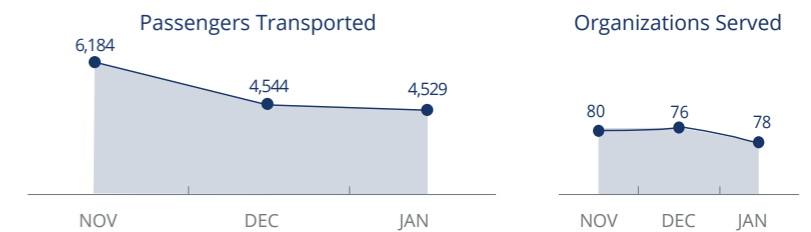
GFD, NUTRITION AND LIVELIHOOD INTERVENTIONS IN ADAMAWA, BORNO AND YOBE STATES
January to September 2019



WFP-LED AND SUPPORTED SECTORS



UN Humanitarian Air Service (UNHAS)



SOURCES: OCHA FTS AND CLUSTERS, 25 FEBRUARY 2019

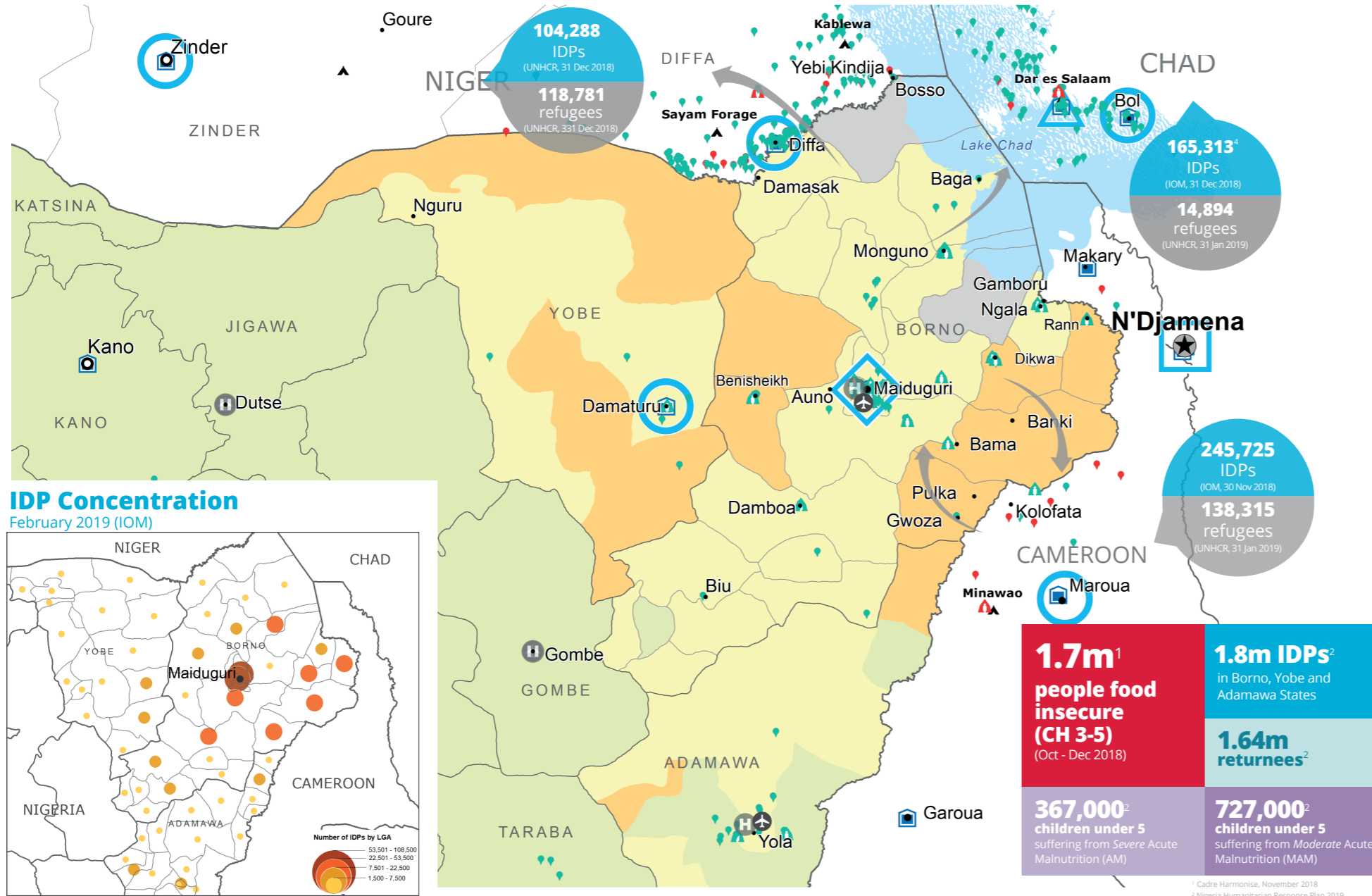
WFP LEVEL 3 EMERGENCY

SINCE 11 AUGUST 2016

For more information, see the SITUATION REPORT and COUNTRY BRIEF www.wfp.org/countries/nigeria

2A Regional Emergency Operation 200777
<http://documents.wfp.org/stellent/groups/public/documents/ep/WFP284303.pdf>

Produced by the WFP Operations Centre (OPSCEN) jointly with Country Office and Regional Bureau Dakar. This dashboard is based on best available information at the time of production. Future updates may vary as new information becomes available.



¹ Cadre Harmonise, November 2018
² Nigeria Humanitarian Response Plan 2019

- IPC Food Security Classification** (Projected October - December 2018)
 - No data
 - Minimal (Phase 1)
 - Stressed (Phase 2)
 - Crisis (Phase 3)
 - Emergency (Phase 4)
 - Famine (Phase 5)
- Country Office
- Area Office
- Sub Office
- Field Office
- Warehouse
- UNHAS Connection
- Ad-Hoc Fixed-Wing Destination
- Ad-Hoc Rotary-Wing Destination
- Warehouse
- IDP Camp
- IDP Center
- IDP Location
- Refugee Camp
- Refugee Center
- Refugee Location
- National Capital
- Major Town
- Intermediate Town
- Small town
- International Boundary
- Province boundary
- River

Sources: WFP, UNGIWI, GAUL, GLCSC, OCHA, UNHCR.

The designations employed and the presentation of material in the map(s) do not imply the expression of any opinion on the part of WFP concerning the legal or constitutional status of any country, territory, city or sea, or concerning the delimitation of its frontiers or boundaries.
© World Food Programme 2018.