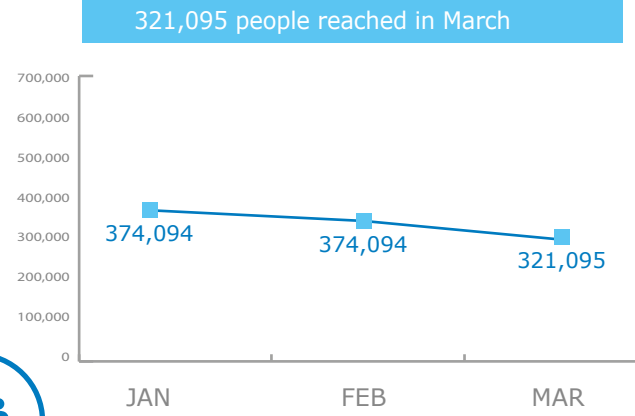


BENEFICIARIES

PRRO 200832*

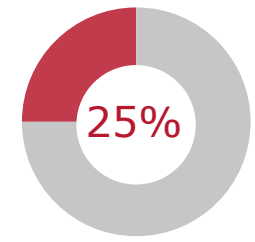


*Protracted Relief and Recovery Operation 200540 ended on 31 December. The consolidation of beneficiary figures for PRRO 200832 is ongoing.

FUNDING

NET FUNDING REQUIREMENTS

Protracted Relief and Recovery Operation 200832
June - November 2016

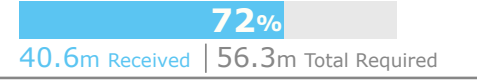


Net Funding Requirements: **15.9m**
Total Requirements: **63.7m**

Source: WFP, 23 May 2016

PROJECT FUNDING STATUS

Special Operation 200789
Provision of Humanitarian Air Services (UNHAS)



Special Operation 200661
Food Security Cluster Coordination, Mar 2014 - Jun 2016



Special Operation 200864
Emergency Road Infrastructure Repairs
Jul 2015 - Jul 2017



Source: WFP, 19 May 2016

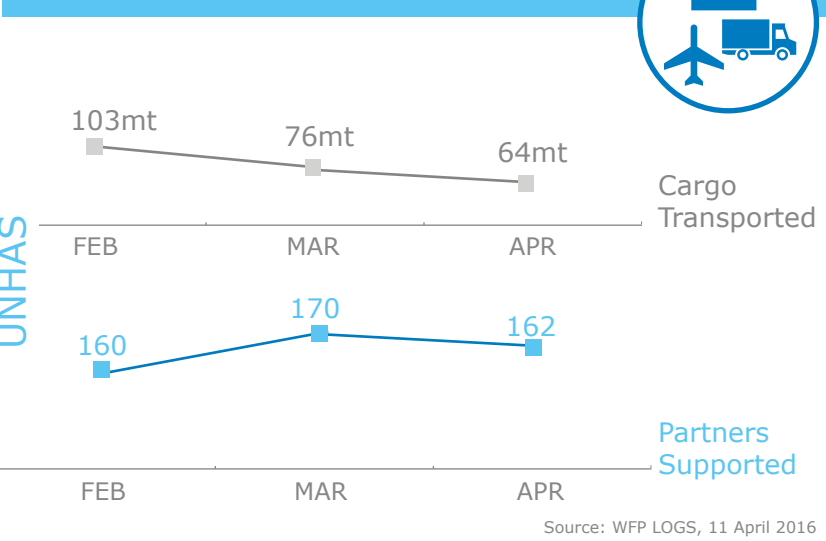
OPERATIONAL CHALLENGES

Humanitarian Access

Insecurity

Resources

COMMON SERVICES



2016 DRC HUMANITARIAN RESPONSE PLAN REQUIREMENTS

WFP SHARE OF APPEAL

Not yet available

TOTAL APPEAL

USD690million

Food Security

182m Requirements

Logistics

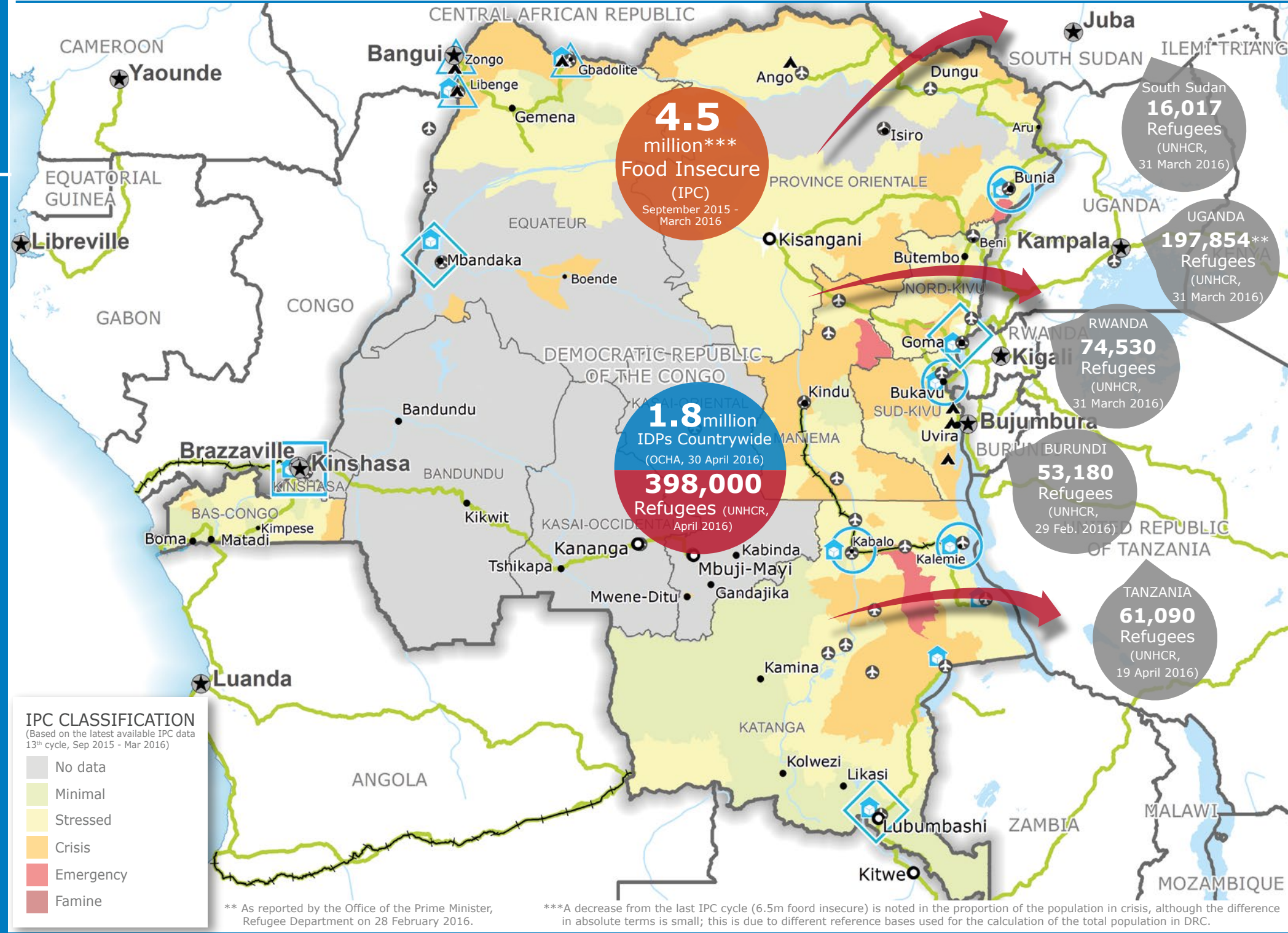
80.3m Requirements

WFP LEVEL 2 EMERGENCY

SINCE 12 DECEMBER 2013

Check the **COUNTRY BRIEF**
<http://www.wfp.org/countries/congo-democratic-republic>

Produced by the WFP **Operations Centre (OPSCEN)**
This dashboard is based on best available information at the time of production. Future updates may vary as new information becomes available.



IPC CLASSIFICATION

(Based on the latest available IPC data 13th cycle, Sep 2015 - Mar 2016)

- No data
- Minimal
- Stressed
- Crisis
- Emergency
- Famine

** As reported by the Office of the Prime Minister, Refugee Department on 28 February 2016.

***A decrease from the last IPC cycle (6.5m food insecure) is noted in the proportion of the population in crisis, although the difference in absolute terms is small; this is due to different reference bases used for the calculation of the total population in DRC.

Sources: WFP, UNGIWG, GAUL, GLSCS, OCHA, UNHCR, IPC
The designations employed and the presentation of material in the map(s) do not imply the expression of any opinion on the part of WFP concerning the legal or constitutional status of any country, territory, city or sea, or concerning the delimitation of its frontiers or boundaries.
© World Food Programme 2015



Source: FTS, 23 May 2016