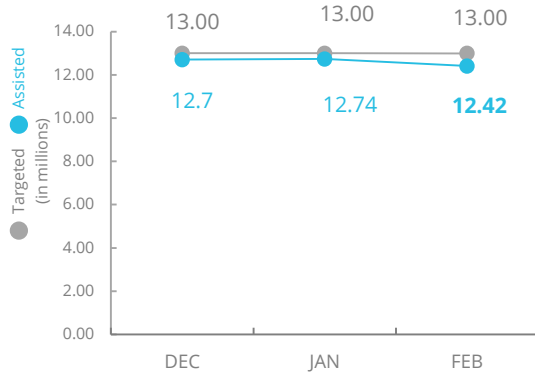


# Yemen



## PEOPLE ASSISTED Yemen Interim Country Strategic Plan (ICSP)



SOURCE: WFP, 26 MAR 2020



## OPERATIONAL PROFILE By Activity (February)

Activity	Targeted	Assisted
General Food Distributions	9,806,209	9,432,569
Commodity Vouchers	2,597,945	2,563,617
Cash Assistance	626,895	429,807
School Feeding	1,277,685	1,277,685
Treatment of Moderate Acute Malnutrition	551,769	440,900
Prevention of Moderate Acute Malnutrition	1,023,234	821,666



## FUNDING Yemen Interim Country Strategic Plan (ICSP)

April - September 2020

# US\$686m

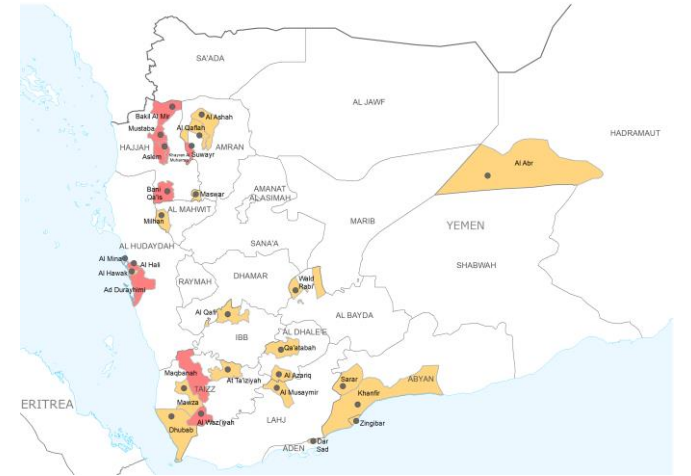
Net funding requirements

**2020 LEVEL 3 RESPONSE**  
Requirements: US\$2.5 bn  
Funded: US\$0.73 bn



SOURCE: WFP, 27 MAR 2020

## ACUTE FOOD SECURITY SITUATION IN 29 DISTRICTS JULY - SEPTEMBER 2019



SOURCE: IPC, 30 JUL 2019

## AVERAGE MONTHLY FUNDING REQUIREMENTS

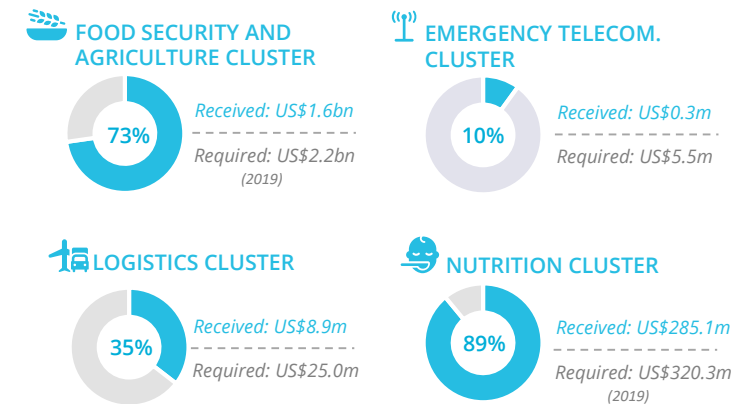
Food: US\$109.4m | Cash: US\$99.6m

## EXPECTED SHORTFALLS



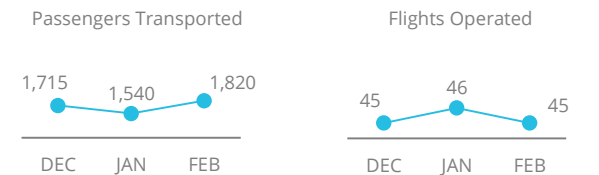
SOURCE: WFP, 29 MAR 2020

## WFP-LED AND SUPPORTED CLUSTERS

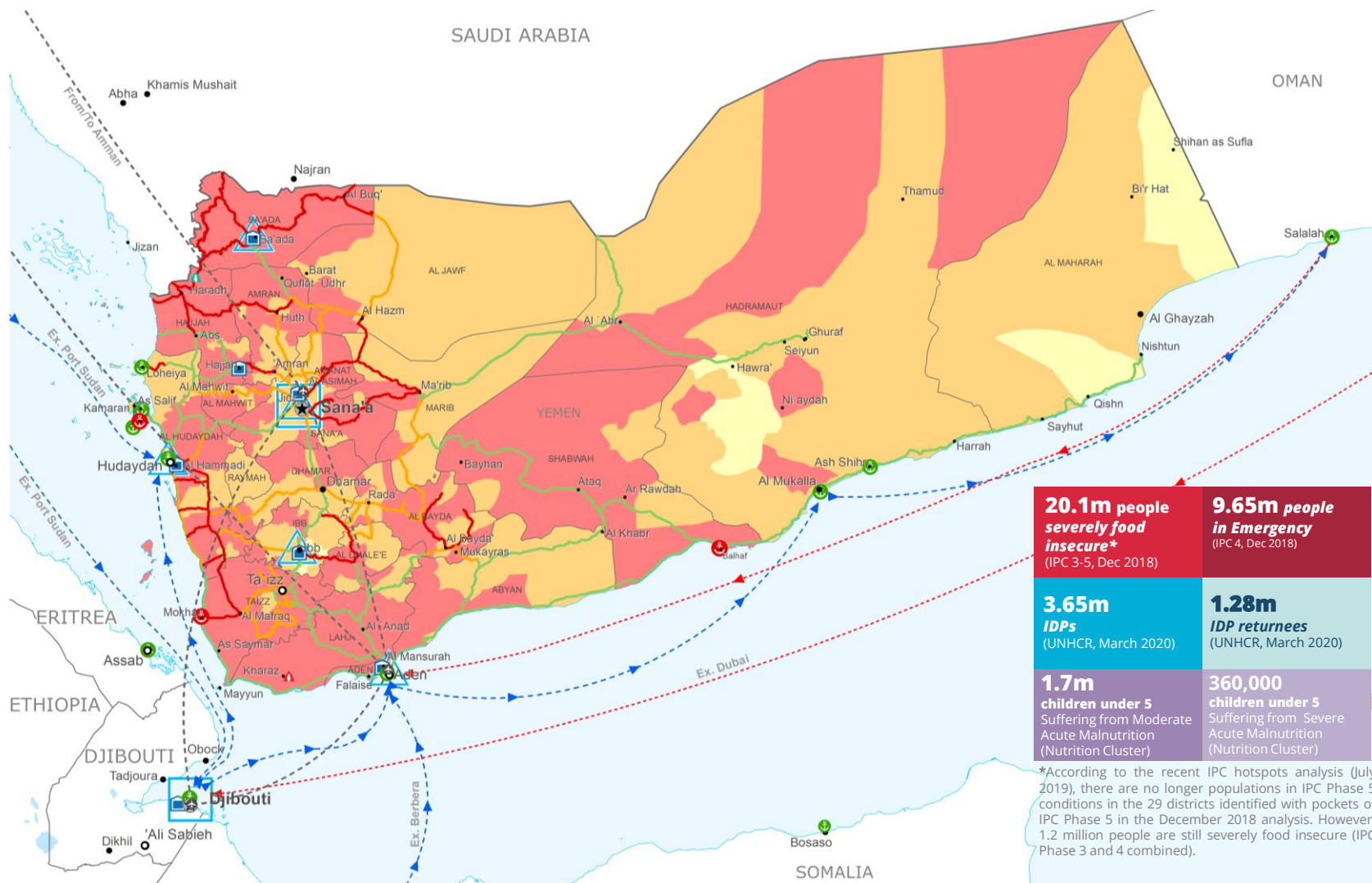


SOURCE: Clusters, 01 April 2020

## UN HUMANITARIAN AIR SERVICES (UNHAS)



SOURCE: WFP, 27 MAR 2020



**20.1m people severely food insecure\*** (IPC 3-5, Dec 2018)

**9.65m people in Emergency** (IPC 4, Dec 2018)

**3.65m IDPs** (UNHCR, March 2020)

**1.28m IDP returnees** (UNHCR, March 2020)

**1.7m children under 5** Suffering from Moderate Acute Malnutrition (Nutrition Cluster)

**360,000 children under 5** Suffering from Severe Acute Malnutrition (Nutrition Cluster)

\*According to the recent IPC hotspots analysis (July 2019), there are no longer populations in IPC Phase 5 conditions in the 29 districts identified with pockets of IPC Phase 5 in the December 2018 analysis. However, 1.2 million people are still severely food insecure (IPC Phase 3 and 4 combined).

## IPC Classification (Dec 2018 - Jan 2019)

- No data
- Minimal (Phase1)
- Stressed (Phase2)
- Crisis (Phase3)
- Emergency (Phase 4)
- Famine (Phase5)
- Country Office
- Field Office
- Warehouse
- UNHAS Connection
- UNHAS Route
- Supply Route Open
- Supply Route Closed
- Road Open
- Road with Restricted Access
- Road Closed
- IDP Camp
- Refugee Camp
- Refugee Center
- National Capital
- Major Town
- Intermediate Town
- Small Town
- International Boundary
- Governorate Boundary
- Port Closed
- Port Operational
- Port with Restricted Access

Sources: WFP, UNGIWG, GAUL, GLCSC, OCHA, UNHCR.

The designations employed and the presentation of material in the map(s) do not imply the expression of any opinion on the part of WFP concerning the legal or constitutional status of any country, territory, city or sea, or concerning the delimitation of its frontiers or boundaries. © World Food Programme 2020.

WFP LEVEL 3 EMERGENCY SINCE 03 JULY 2015

SITUATION REPORT and COUNTRY BRIEF

