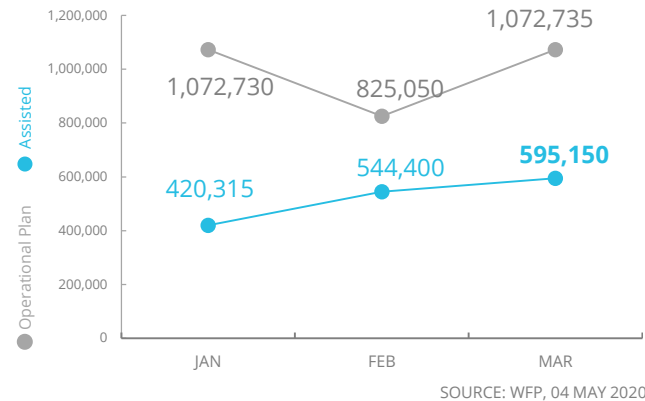


# Central African Republic



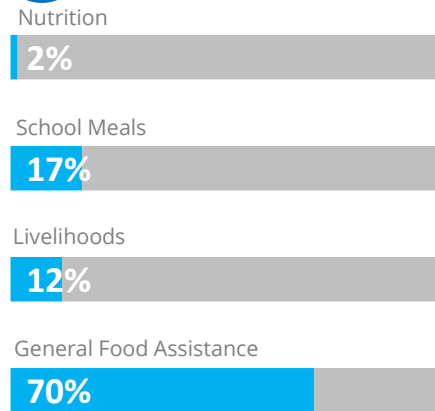
## PEOPLE ASSISTED BY WFP

Food Assistance



## OPERATIONAL PROFILE

People reached (March)



## COVID-19 Operational Impact

Assisted	Status	WFP Response
19,340	!	Malnutrition Activities only
94,765 (50% of plan)	✗	School Feeding: Suspended
81,125	✓	Livelihoods: Implemented
400,000	✓	GFA: Implemented



## Funding

Central African Republic Country Strategic Plan (CSP)

May – October 2020

**US\$ 130 m**  
Net funding requirements

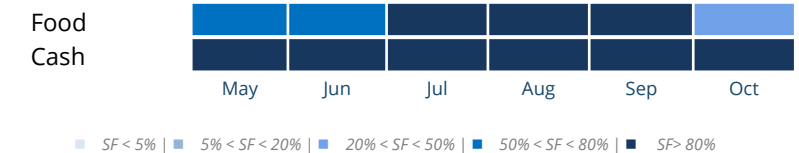
**2020 COUNTRY STRATEGIC PLAN (CSP)**  
Requirements: USD 228m  
Contributions: USD 91.6m



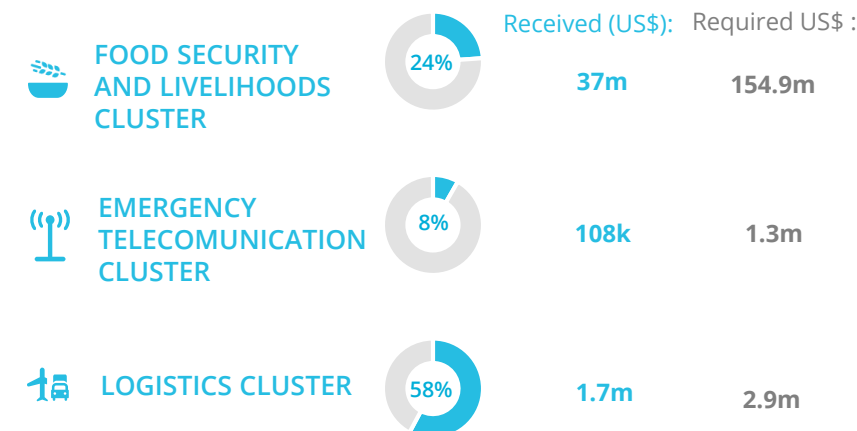
## AVERAGE MONTHLY FUNDING REQUIREMENTS (US\$)



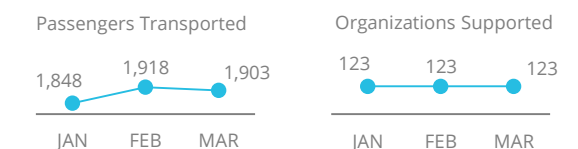
EXPECTED SHORTFALLS



## WFP-LED AND SUPPORTED CLUSTERS

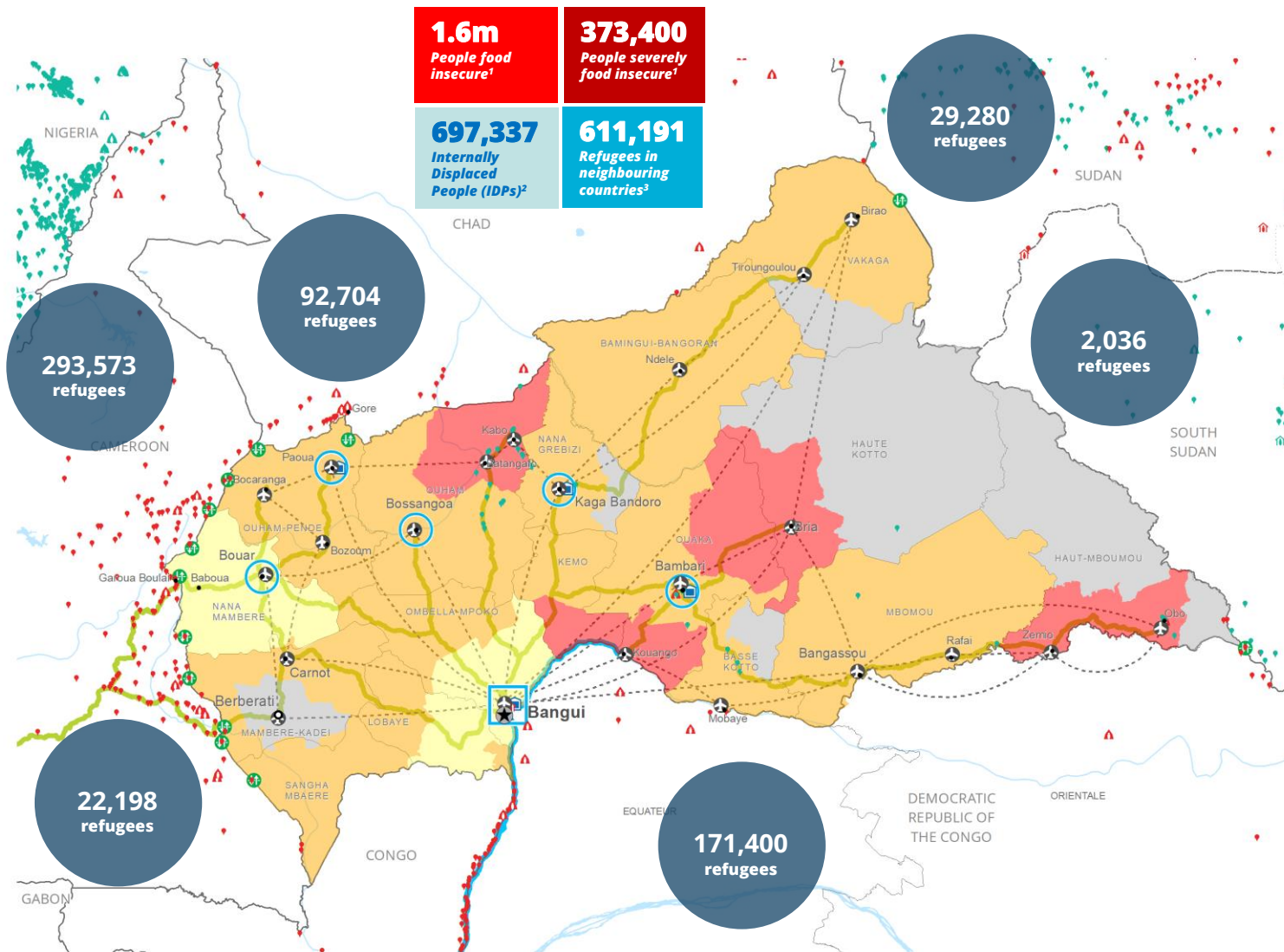


## UN HUMANITARIAN AIR SERVICES (UNHAS)

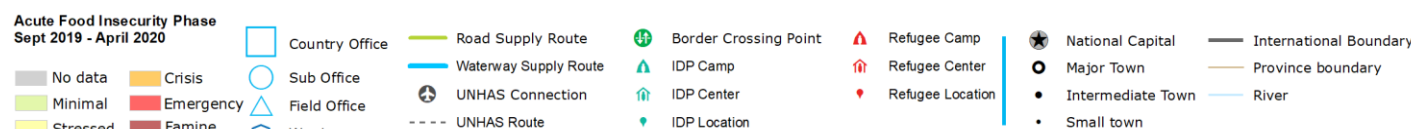


**WFP LEVEL 2 EMERGENCY SINCE 30 MARCH 2018**

[SITUATION REPORT](#) and [COUNTRY BRIEFS](#)



<sup>1</sup> National Food Security Assessment (ENSA), December 2019  
<sup>2</sup> CMP, MAR 2020  
<sup>3</sup> UNHCR, FEB 2020



Produced by the WFP Operations Centre (OPSCEN) jointly with Country Office and Regional Bureau Dakar. This dashboard is based on best available information at the time of production.