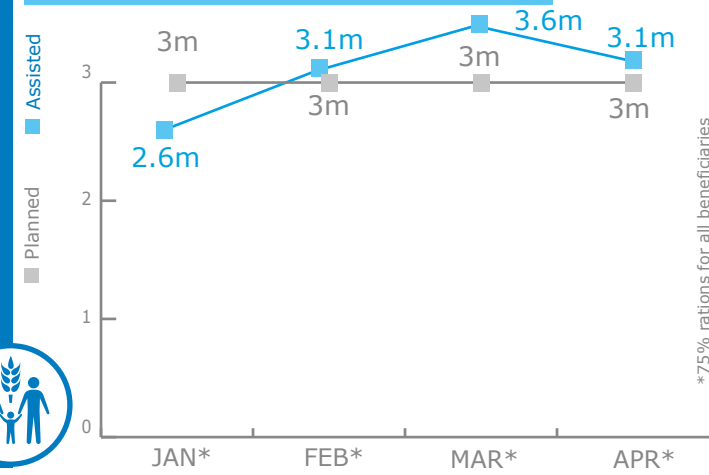


April 2016

BENEFICIARIES

Emergency Operation 200890

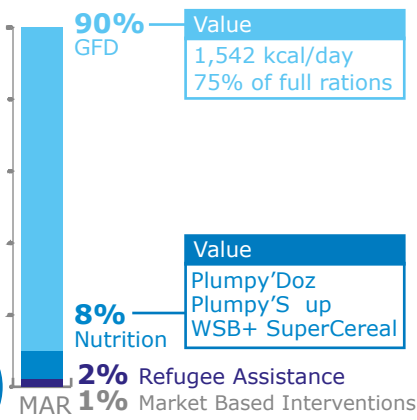
3.1 million people assisted in April



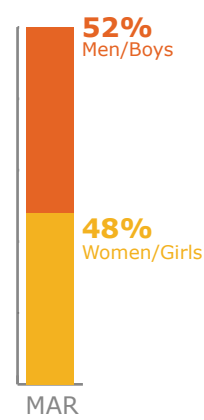
BENEFICIARY PROFILE



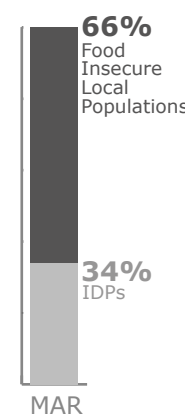
BY ACTIVITY



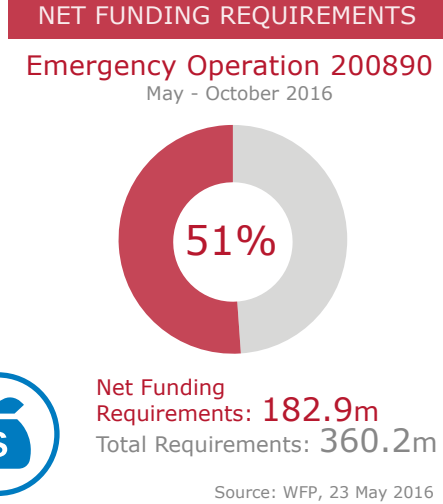
BY GENDER



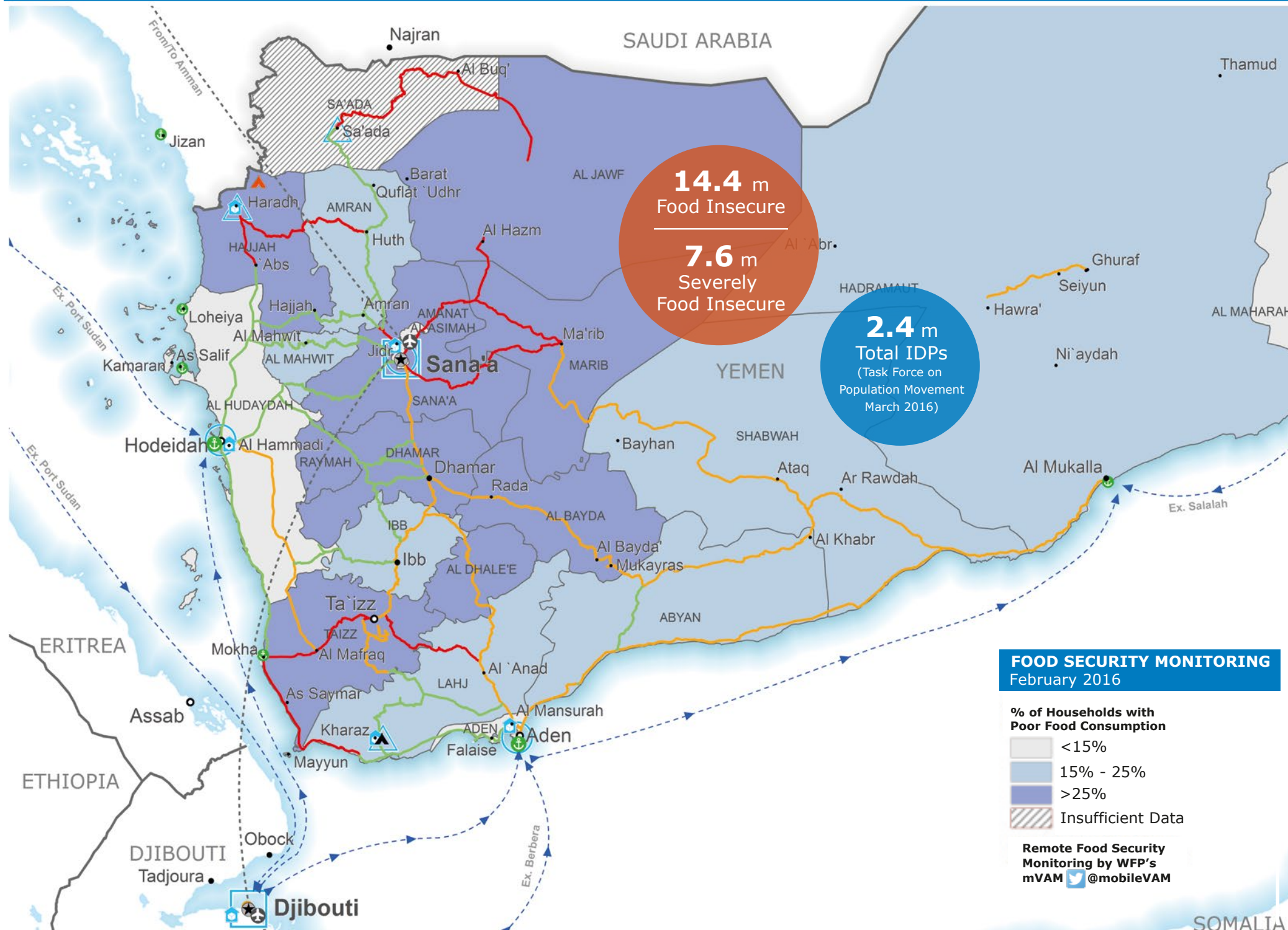
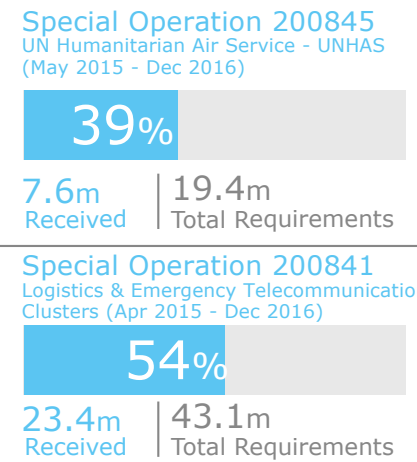
BY CATEGORY



FUNDING



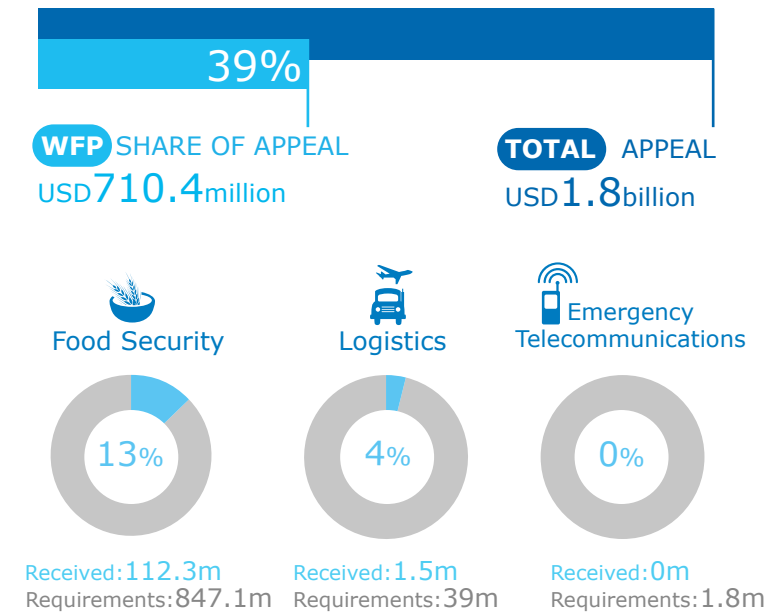
PROJECT FUNDING STATUS



OPERATIONAL CHALLENGES



2016 FUNDING of WFP-LED or CO-LED CLUSTERS



WFP LEVEL 3 EMERGENCY

SINCE 03 JULY 2015
IASC LEVEL 3 (SINCE 01 JULY 2015)

Check the **COUNTRY BRIEF** <https://www.wfp.org/countries/yemen>

Produced by the WFP **Operations Centre (OPSCEN)**
This dashboard is based on best available information at the time of production. Future updates may vary as new information becomes available.

- Country Office
- Sub Office
- Field Office
- Warehouse
- IDP Camp
- Refugee Camp
- Transit Camp
- UNHAS Connection
- UNHAS Connection
- Port Operational
- Port with Restricted Access
- Sea Supply Route
- Road Status
- Road Open
- Road With Restricted Access
- Closed Road
- National Capital
- Major Town
- Intermediate Town
- Small Town
- International Boundary
- Governorate Boundary

Sources: WFP, UNGIWG, GAUL, GLCSC, OCHA, UNHCR, mVAM
The designations employed and the presentation of material in the map(s) do not imply the expression of any opinion on the part of WFP concerning the legal or constitutional status of any country, territory, city or sea, or concerning the delimitation of its frontiers or boundaries. © World Food Programme 2016