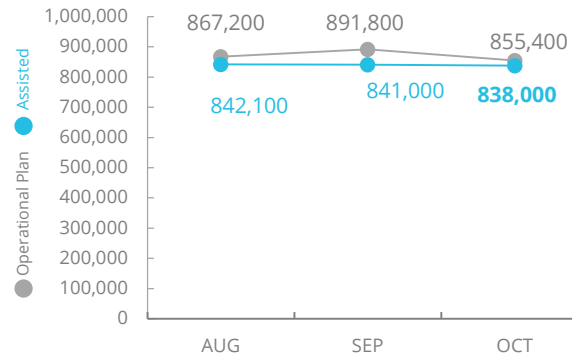
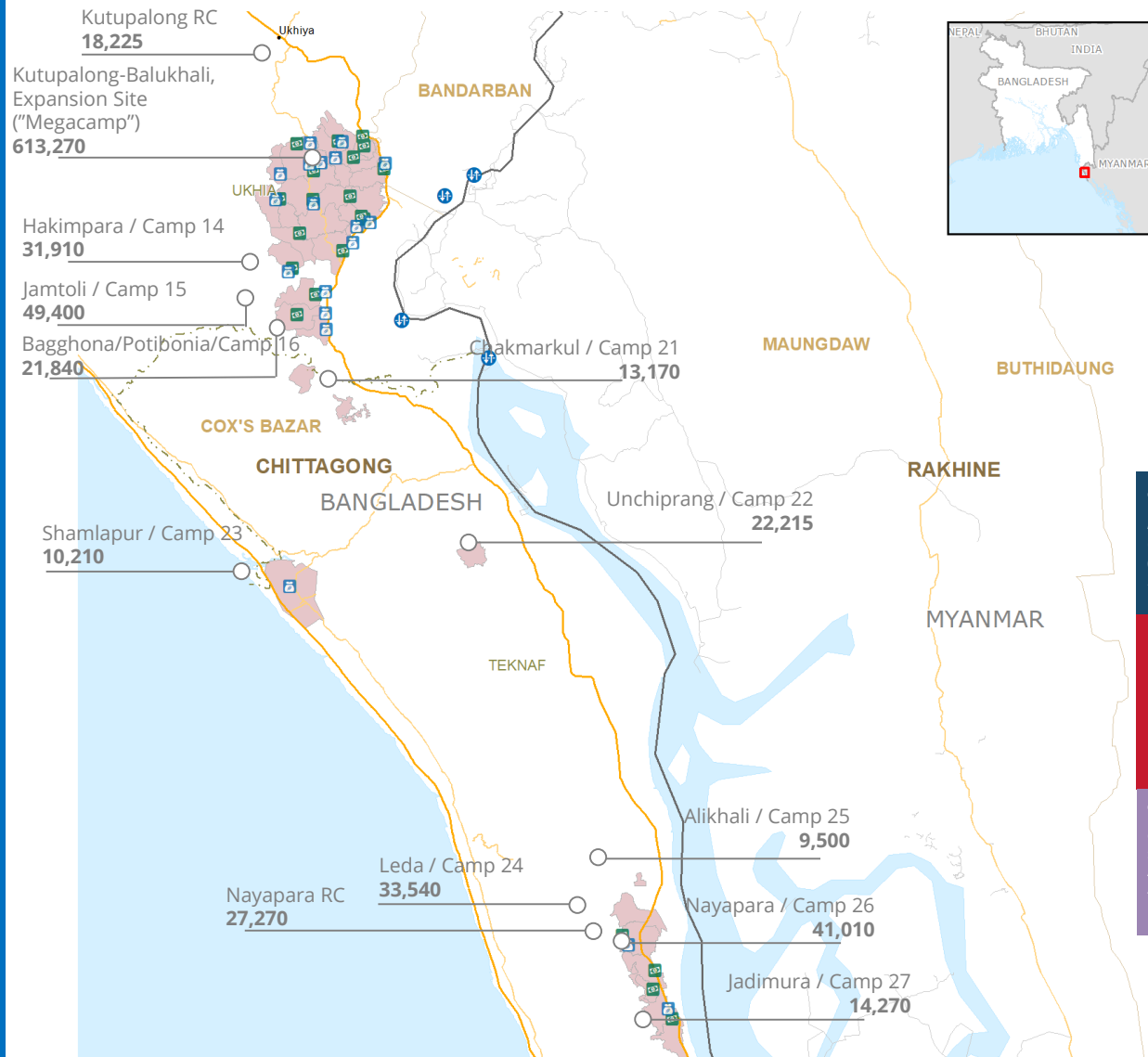
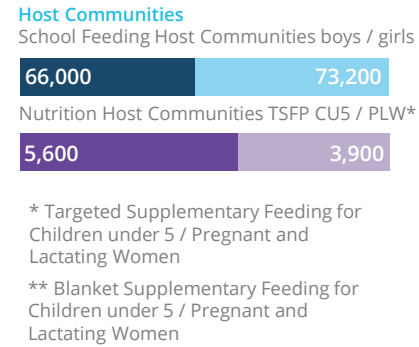
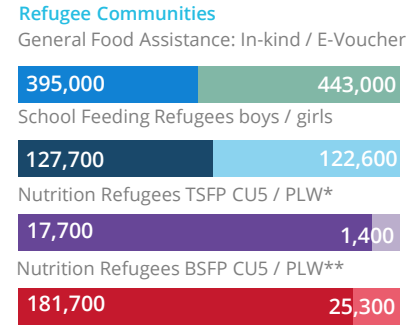


Bangladesh

PEOPLE ASSISTED Bangladesh Rohingya Refugee Response



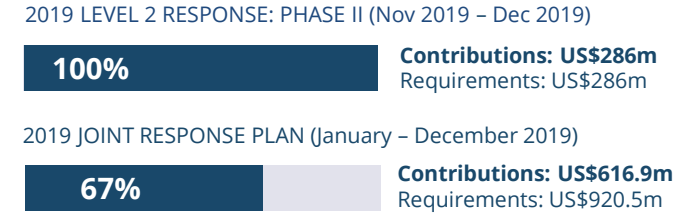
OPERATIONAL PROFILE By Modality (October 2019)



915,000 Rohingya refugees in Cox's Bazar (ISCG/UNHCR November 2019)	905,800 Rohingya refugee arrivals incl. before 2017 (ISCG October 2019)
1m people targeted by the Food Security Sector (ISCG October 2019)	88% of new arrivals dependent on food assistance (Refugee influx Emergency Vulnerability Assessment- REVA 2, June 2019)
95,200 children under 5 suffering from Moderate Acute Malnutrition (Nutrition Sector, March 2019)	38,400 children under 5 suffering from Severe Acute Malnutrition (Nutrition Sector, March 2019)

FUNDING Cox's Bazar Level 2 Emergency Response:

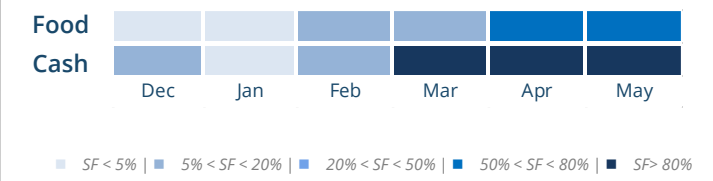
November 2019 – April 2020
Net funding requirements us\$50m



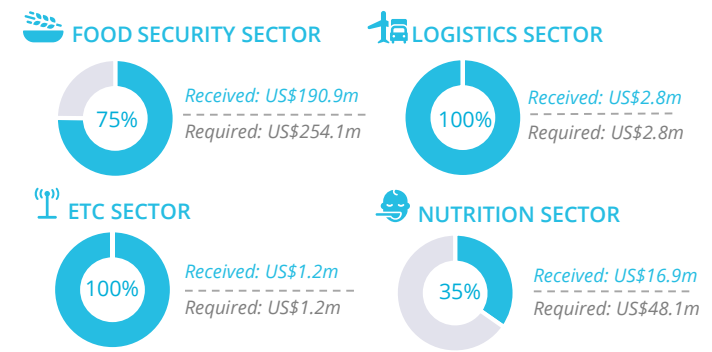
AVERAGE MONTHLY FUNDING REQUIREMENTS



EXPECTED SHORTFALLS (SF)



WFP-LED AND SUPPORTED SECTORS



WFP LEVEL 2 EMERGENCY
SINCE 27 DECEMBER 2018

For more information, see the SITUATION REPORT and COUNTRY BRIEF
<https://www1.wfp.org/countries/bangladesh>

Bangladesh Country Strategic Plan
<https://www1.wfp.org/operations/bd01-bangladesh-country-strategic-plan-2017-2020>

- Food Distribution Point
- WFP Voucher Outlet
- Refugee Camp
- Refugees in Host Communities
- Spontaneous Site
- Border Crossing Point
- Primary
- Secondary
- Tertiary
- Track/Trail
- Intermediate Town
- Small town
- International boundary
- State boundary
- Township Boundary
- Union Boundary

Sources: WFP, UNGIWG, GAUL, GLCSC, OCHA, UNHCR. Population figures: Inter Sector Coordination Group (ISCG), November 2019.

The designations employed and the presentation of material in the map(s) do not imply the expression of any opinion on the part of WFP concerning the legal or constitutional status of any country, territory, city or sea, or concerning the delimitation of its frontiers or boundaries. © World Food Programme 2019.