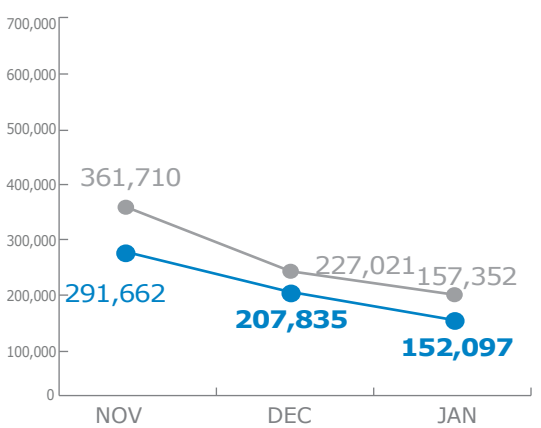
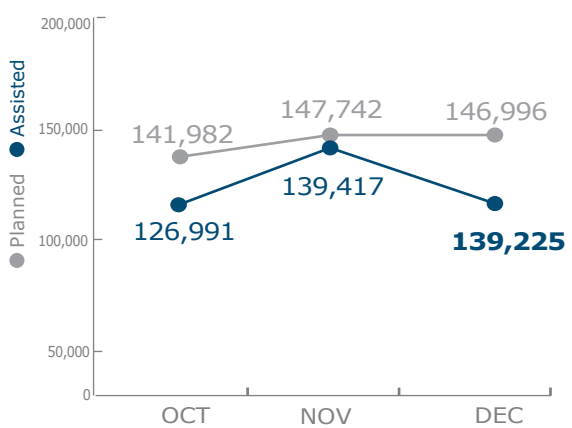


### PEOPLE ASSISTED

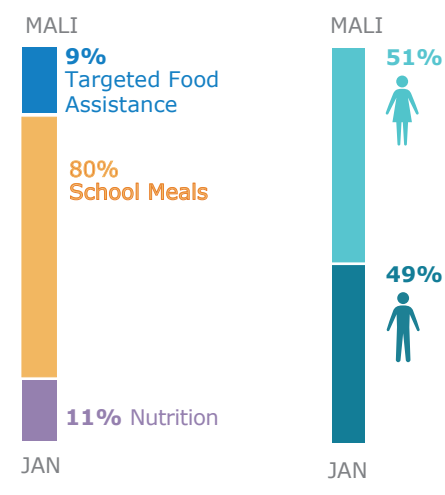
RELIEF OPERATIONS MALI (PRRO 200719)



REGION (BURKINA FASO, MAURITANIA & NIGER)



### OPERATIONAL PROFILE



### FUNDING

Mali Transitional Interim Country Strategic Plan (T-ICSP)

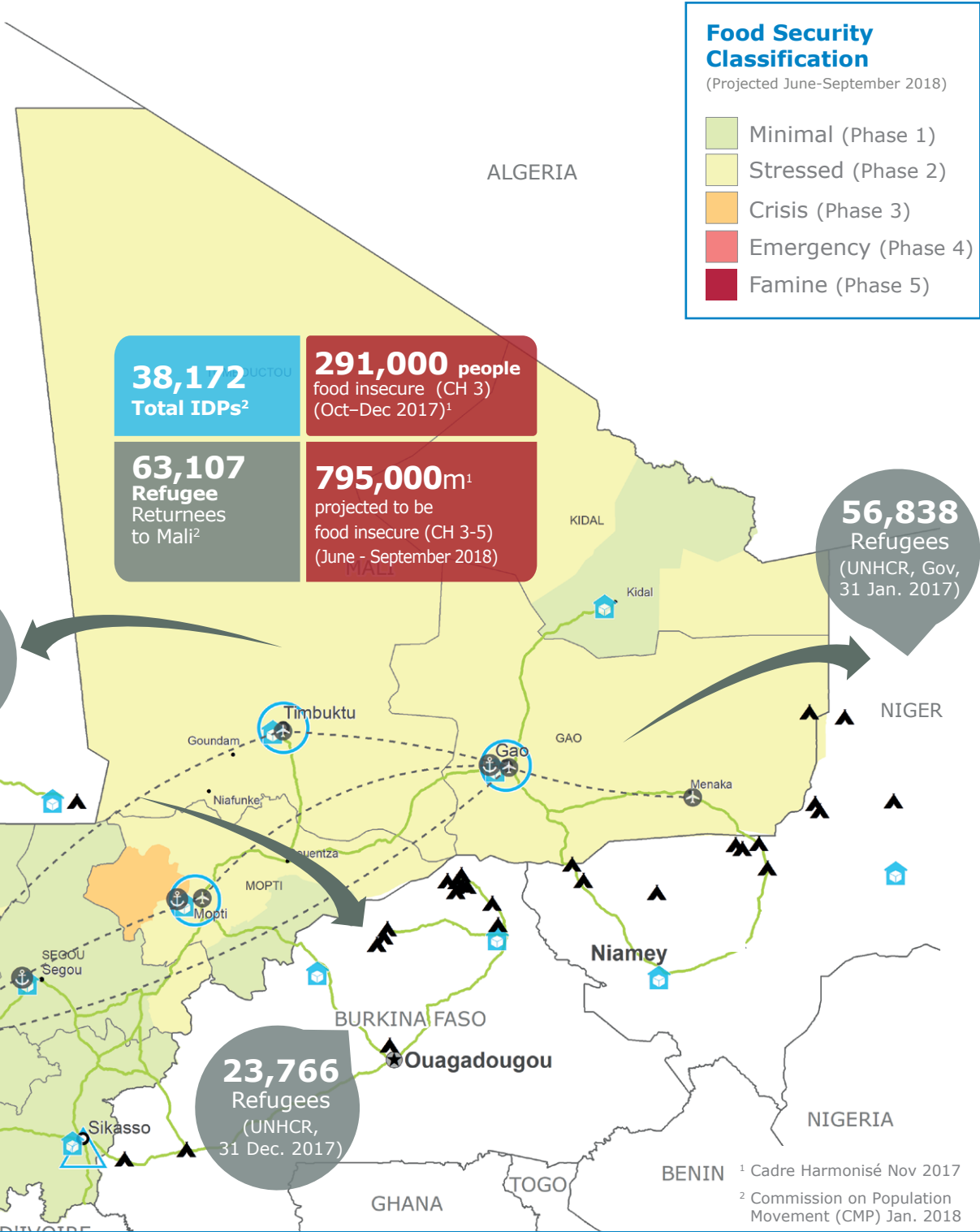
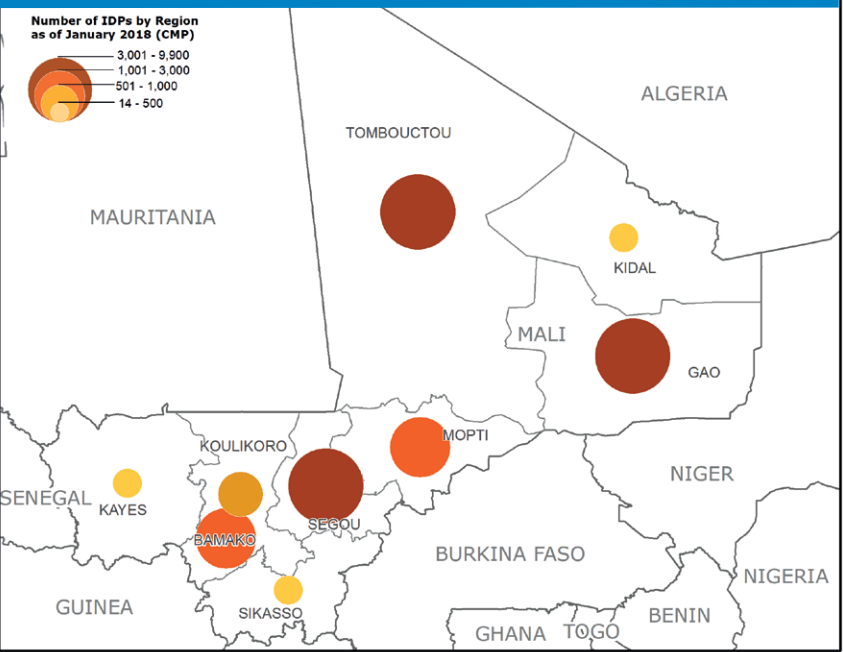
March - August 2018

**US\$ 57.6m**  
Net Funding Requirements

2018 operations **15% funded**

Source: WFP, 21 February 2018

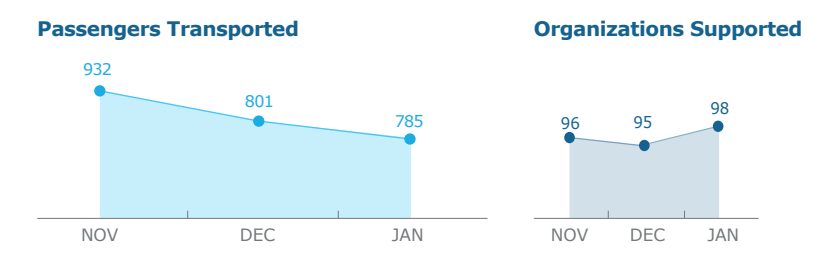
### IDP Concentration as of 25 January 2018 (CMP)



### WFP LED & CO-LED CLUSTERS



### UN Humanitarian Air Service (UNHAS)



### WFP LEVEL 2 EMERGENCY SINCE 12 JANUARY 2012

For more information, see the **SITUATION REPORT** and **COUNTRY BRIEF** [www.wfp.org/countries/mali](http://www.wfp.org/countries/mali)

**2A** RELIEF OPERATION 200719  
<http://documents.wfp.org/stellent/groups/public/documents/ep/WFP284303.pdf>

Produced by the WFP **Operations Centre (OPSCEN)** jointly with Country Office and Regional Bureau Dakar

This dashboard is based on best available information at the time of production. Future updates may vary as new information becomes available.

- Country Office
- Warehouse
- National Capital
- International boundary
- Sub Office
- UNHAS Connection
- Major Town
- Region boundary
- Field Office
- UNHAS Route
- Intermediate Town
- River
- Small Town
- Road Supply Route
- Surface Waterbody

Sources: WFP, UNGIWG, GAUL, GLCSC, OCHA, UNHCR, Cadre Harmonisé (Nov 2017). The designations employed and the presentation of material in the map(s) do not imply the expression of any opinion on the part of WFP concerning the legal or constitutional status of any country, territory, city or sea, or concerning the delimitation of its frontiers or boundaries. © World Food Programme 2018.