



World Food Programme

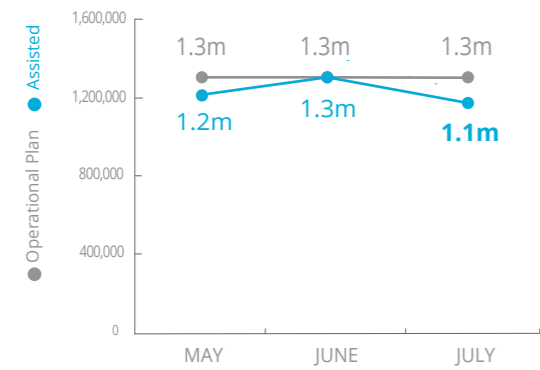
Emergency Dashboard | August 2018

SAVING LIVES
CHANGING LIVES

Nigeria

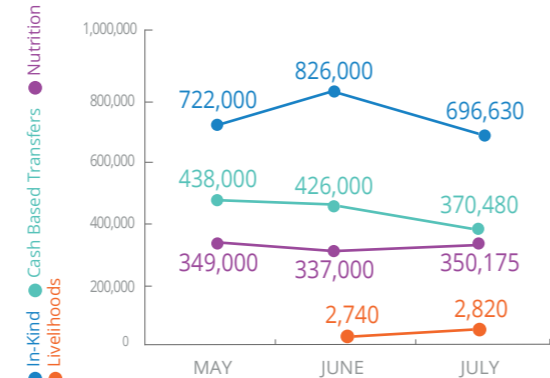
PEOPLE ASSISTED

Regional Emergency Operation 200777



OPERATIONAL PROFILE

by Activity



Note: Figures should not be added to avoid double-counting

FUNDING

Nigeria component of Regional Emergency Operation 200777

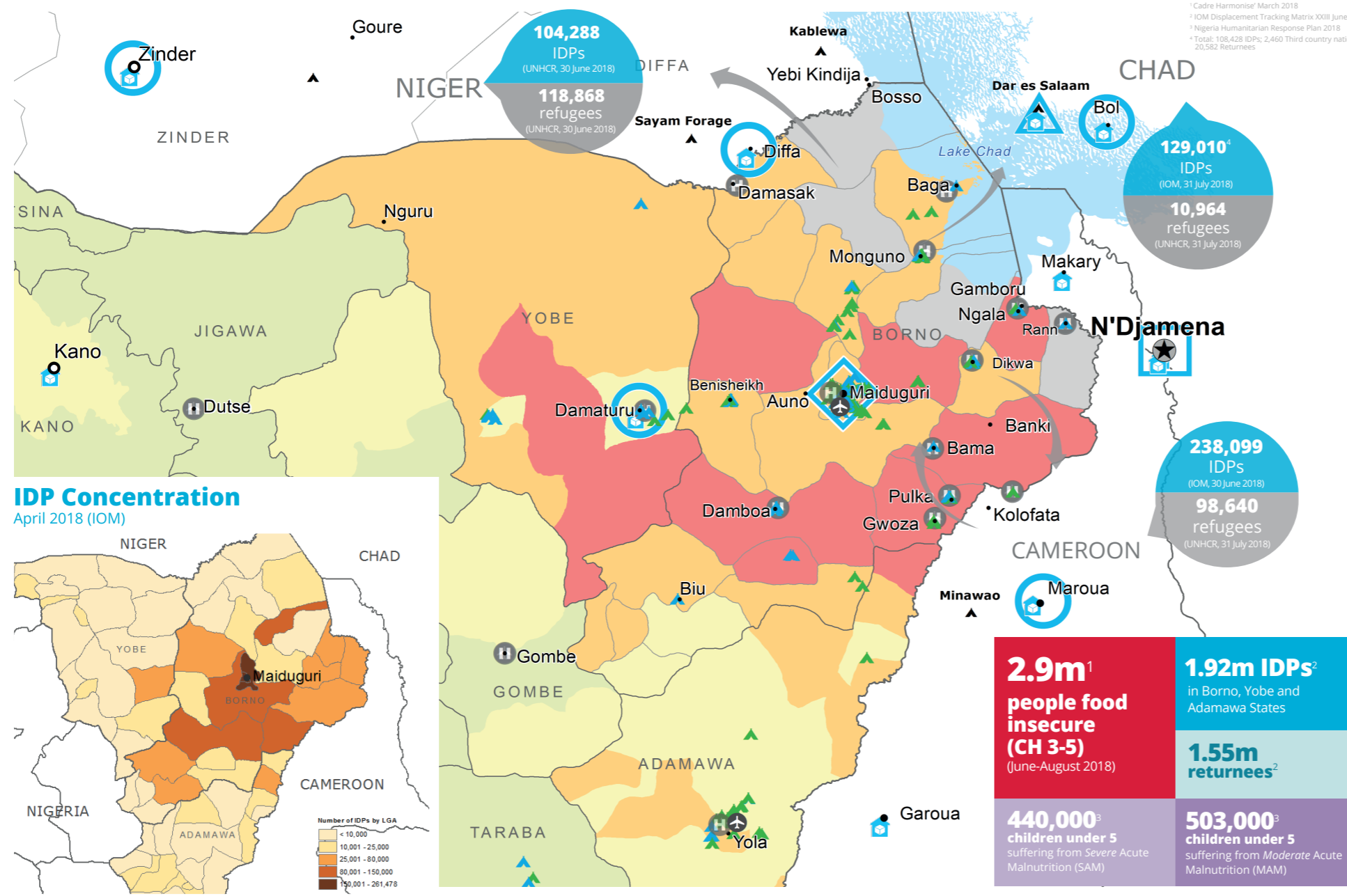
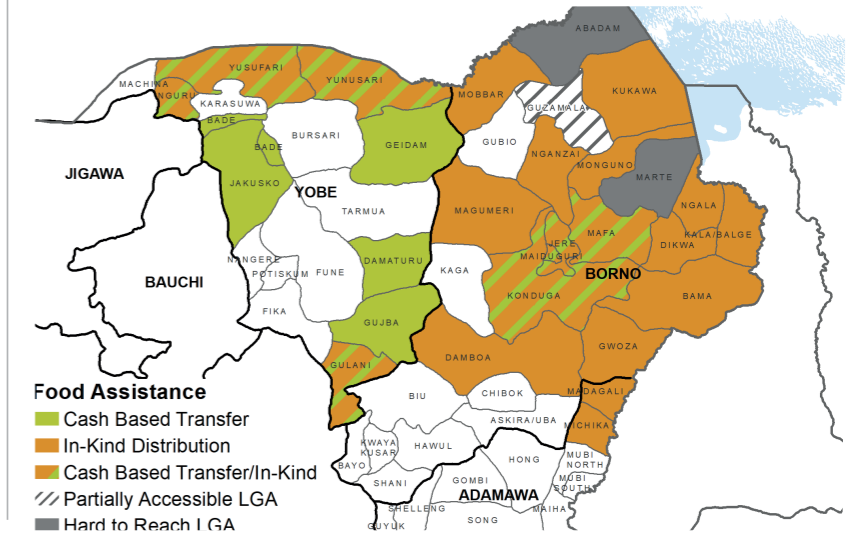
Sept 2018 - Feb 2019
Net funding requirement **USD72.4m**

2018 LEVEL 3 RESPONSE
40% Allocated Contributions : US\$126.9m
Requirement: US\$318.7m

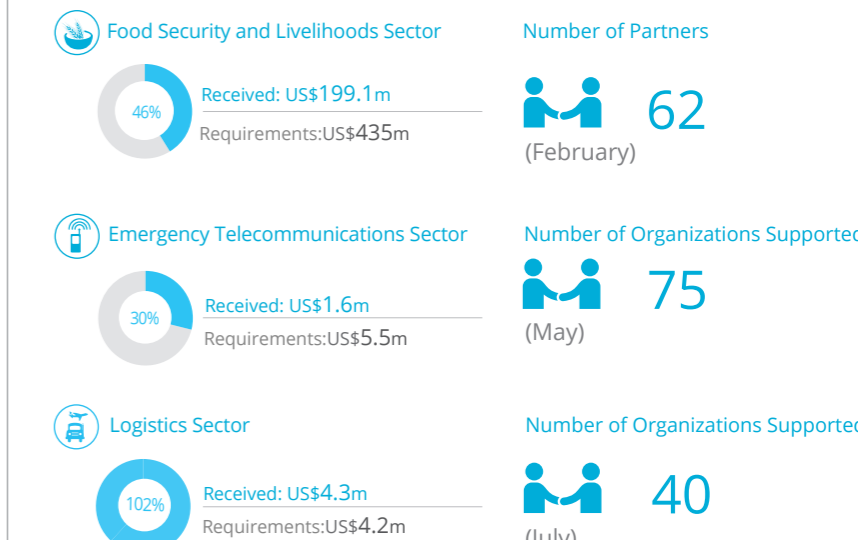
UN Humanitarian Air Services (UNHAS) Nigeria
Regional Special Operation 200834
70% Received: US\$18.8m
2018 Requirement: US\$27m

Logistics and Emergency Telecommunications Sectors
Special Operation 201032
29% Received: US\$3m
2018 Requirement: US\$10.6m

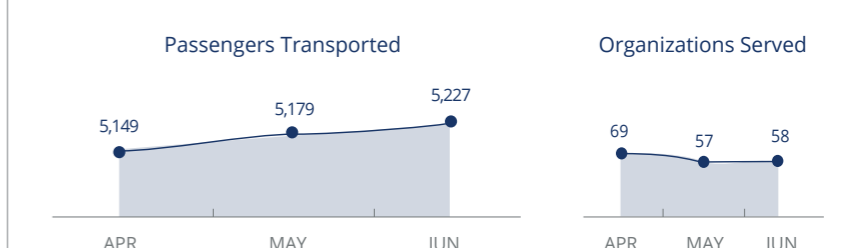
WFP OPERATIONAL PRESENCE AND FOOD ASSISTANCE MODALITIES



WFP LED & SUPPORTED SECTORS



UN Humanitarian Air Service (UNHAS)



WFP LEVEL 3 EMERGENCY
SINCE 11 AUGUST 2016

For more information, see the SITUATION REPORT and COUNTRY BRIEF www.wfp.org/countries/nigeria

2A Regional Emergency Operation 200777
<http://documents.wfp.org/stellent/groups/public/documents/ep/WFP284303.pdf>

Cadre Harmonisé (CH) Classification
June-August 2018 Projection

- No data
- Minimal (Phase 1)
- Stressed (Phase 2)
- Crisis (Phase 3)
- Emergency (Phase 4)
- Famine (Phase 5)

Legend:

- Country Office
- Area Office
- Sub Office
- Field Office
- Warehouse
- Refugee Camp
- IDP Camp
- IDP Collective Center
- UNHAS Connection
- Ad-Hoc Rotary-Wing Destination
- National Capital
- Major Town
- Intermediate Town
- International Boundary
- Region Boundary

Sources: WFP, UNGIWG, GAUL, GLCSC, OCHA, UNHCR.

The designations employed and the presentation of material in the map(s) do not imply the expression of any opinion on the part of WFP concerning the legal or constitutional status of any country, territory, city or sea, or concerning the delimitation of its frontiers or boundaries.

© World Food Programme 2018.

Produced by the WFP Operations Centre (OPSCEN) jointly with Country Office and Regional Bureau Dakar. This dashboard is based on best available information at the time of production. Future updates may vary as new information becomes available.