



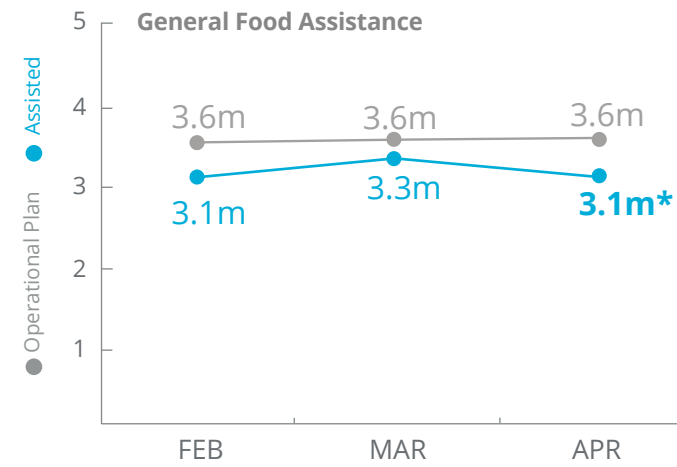
World Food Programme

# Syria



## PEOPLE ASSISTED

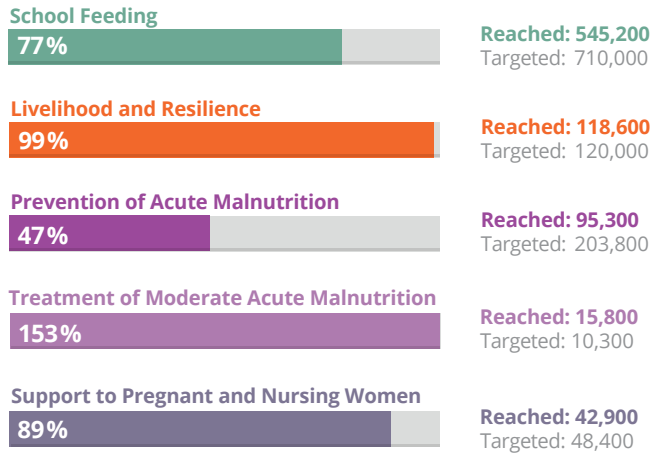
Syria Interim Country Strategic Plan (ICSP)



SOURCE: WFP, 21 MAY 2019

## OTHER ACTIVITIES

April 2019



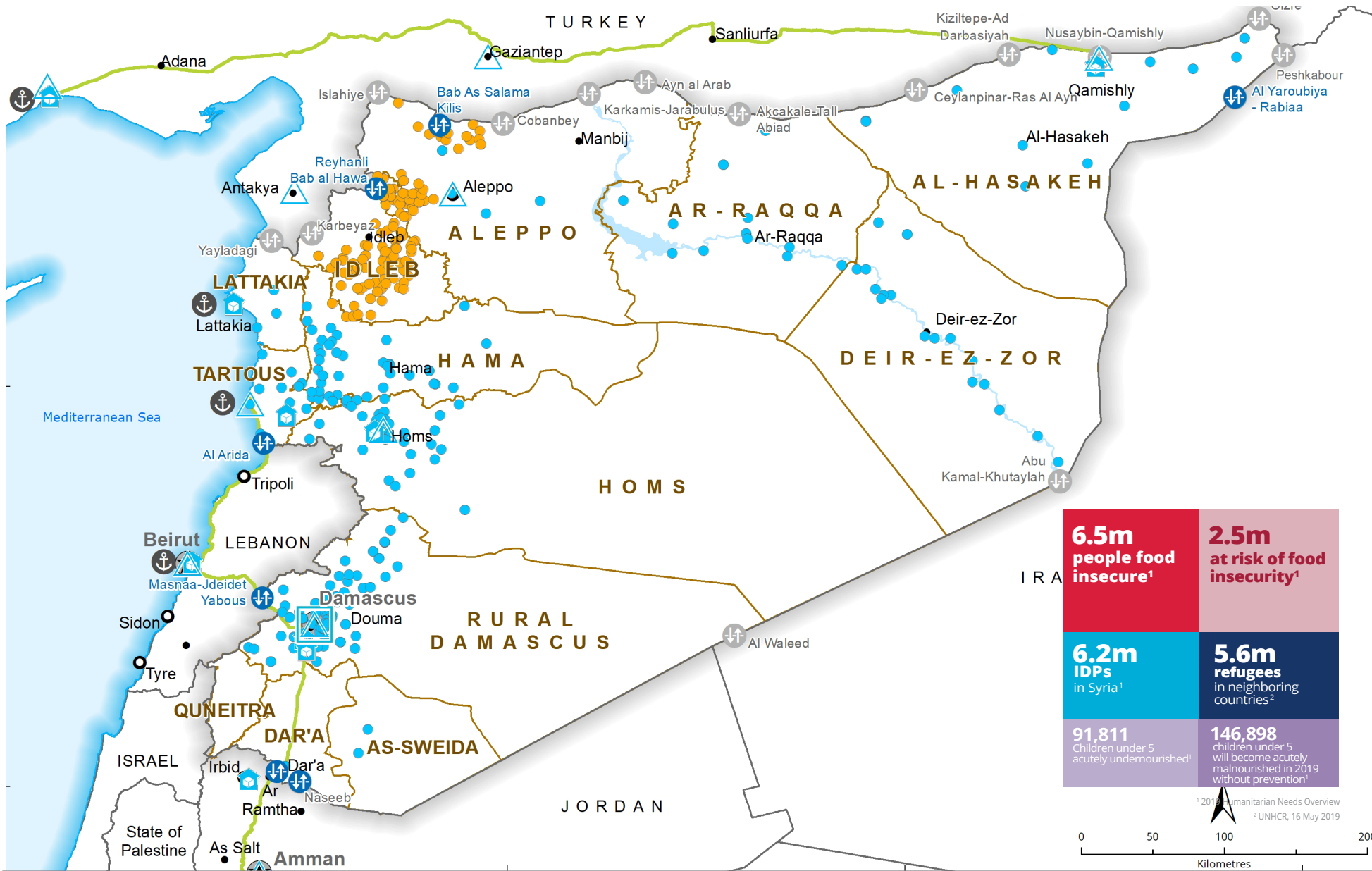
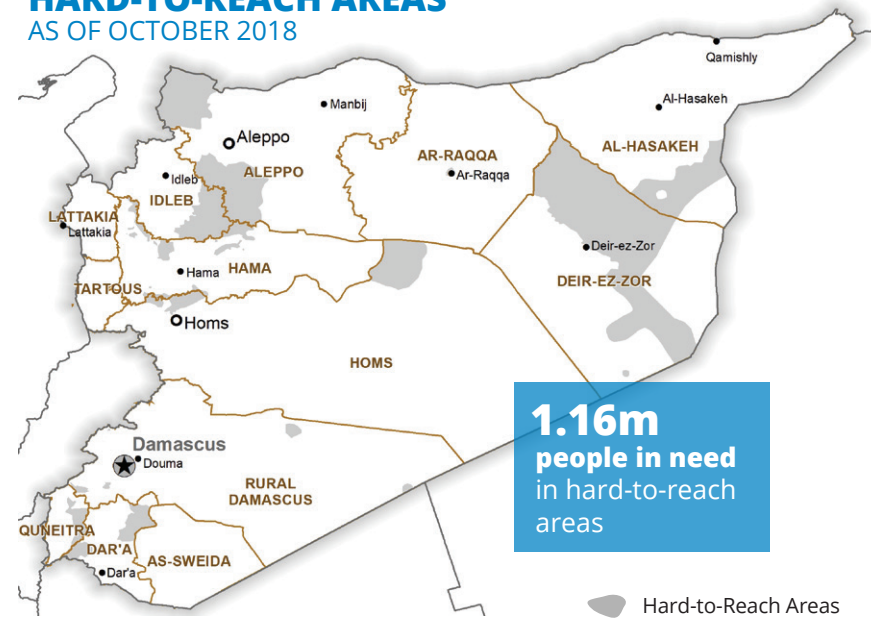
## FUNDING

Syria Interim Country-Strategic Plan (ICSP)

June - November 2019  
Net funding requirement:  
**US\$195m**

SOURCE: WFP, 24 MAY 2019

## HARD-TO-REACH AREAS AS OF OCTOBER 2018

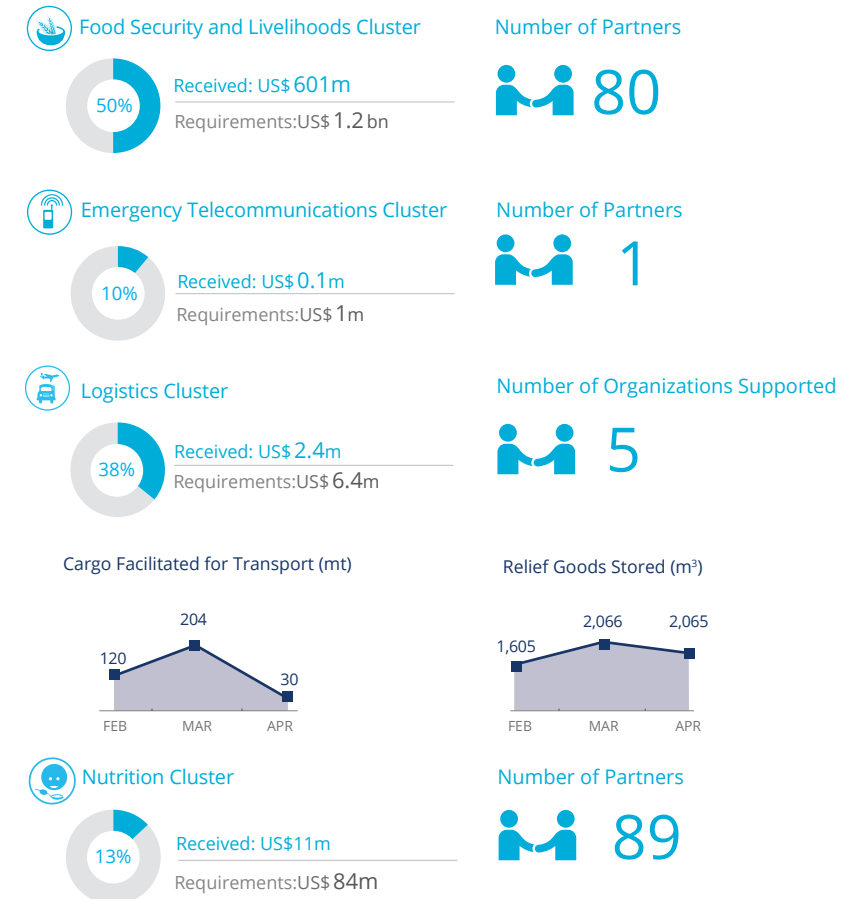


- Food Distribution Points (FDP)**
  - Blue circle: FDP Regular Deliveries
  - Red circle: FDP Cross-line Deliveries
  - Yellow circle: FDP Cross-border Deliveries
- Country Office**
  - Blue square: Country Office
  - Blue circle: Sub Office
  - Blue triangle: Field Office
  - Blue house: Warehouse
- Road Supply Route**
  - Green line: Road Supply Route
  - Blue circle with cross: Open Border Crossing Point
  - Blue circle with cross: Sporadically Open Border Crossing Point
  - Blue circle with anchor: Port
- Other**
  - Black star: National Capital
  - Black circle: Major Town
  - Black circle: Intermediate Town
  - Black line: International Boundary
  - Blue line: Governor Boundary
  - Blue line: River
  - Blue circle: Surface Waterbody

Sources: OCHA, WFP, GLCSC, UNGIWG, UNHCR, Geonames.

The designations employed and the presentation of material in the map(s) do not imply the expression of any opinion on the part of WFP concerning the legal or constitutional status of any country, territory, city or sea, or concerning the delimitation of its frontiers or boundaries. © World Food Programme 2019.

## WFP-LED AND SUPPORTED CLUSTERS



SOURCE: WFP, 27 MAY 2019

## WFP LEVEL 3 EMERGENCY SINCE 14 DECEMBER 2012

IASC LEVEL 3 EMERGENCY SINCE 15 JANUARY 2013

For more information, see the SITUATION REPORT and COUNTRY BRIEF [www.wfp.org/countries/syria](http://www.wfp.org/countries/syria)

**Syria Interim Country Strategic Plan**  
[www1.wfp.org/operations/sy02-syrian-arab-republic-interim-country-strategic-plan-2019-2020](http://www1.wfp.org/operations/sy02-syrian-arab-republic-interim-country-strategic-plan-2019-2020)

Produced by the WFP Operations Centre (OPSCEN) jointly with Country Office and Regional Bureau Cairo. This dashboard is based on best available information at the time of production. Future updates may vary as new information becomes available.