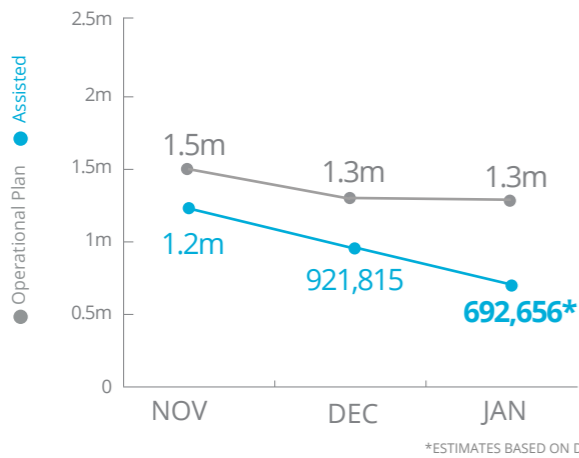


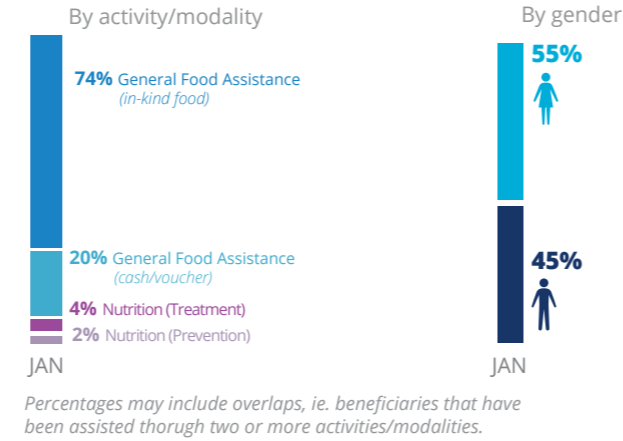
Democratic Republic of Congo

PEOPLE ASSISTED

DR Congo Interim Country Strategic Plan (ICSP)



OPERATIONAL PROFILE

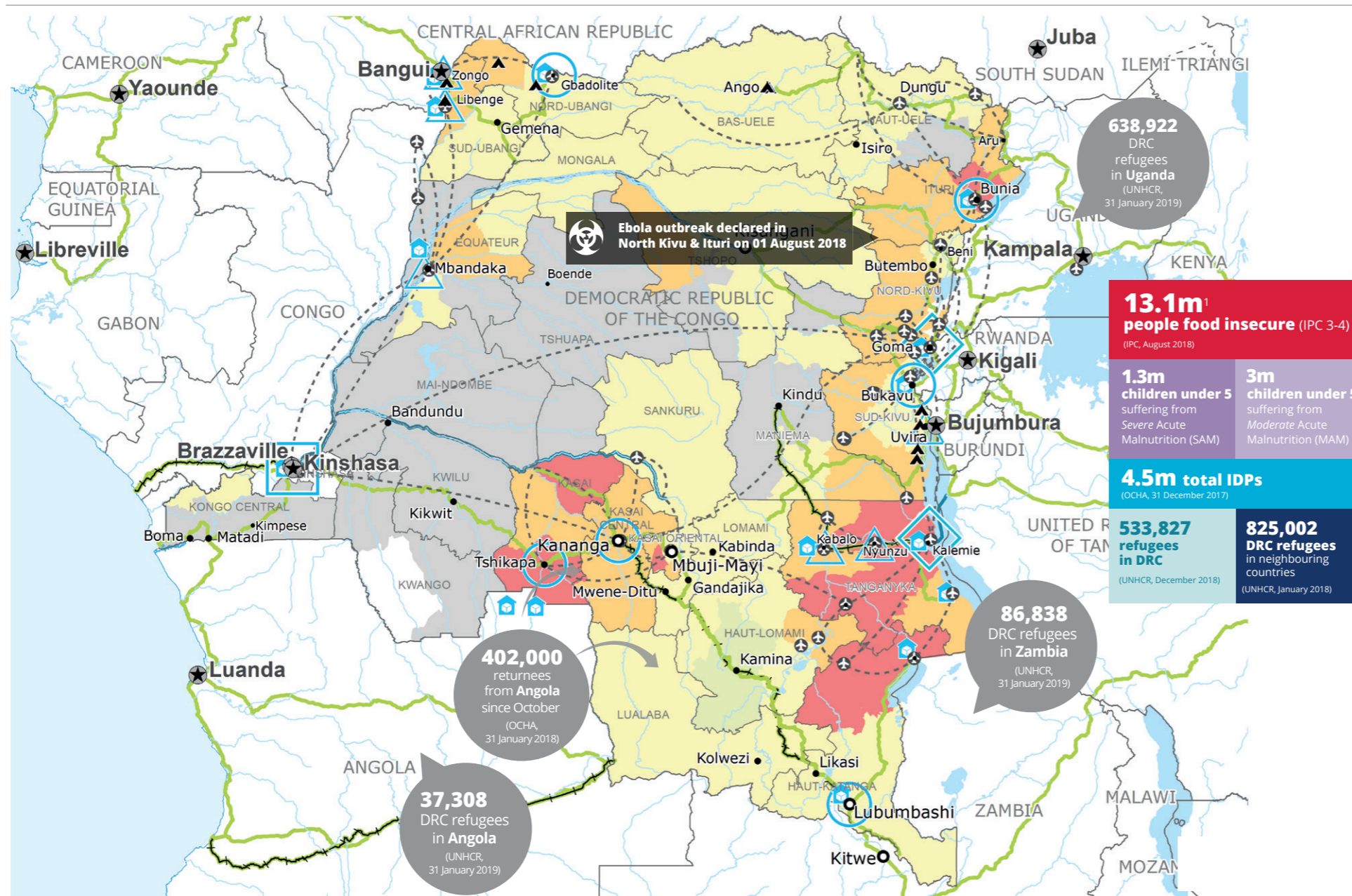


FUNDING

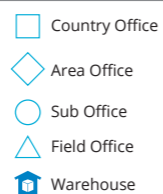
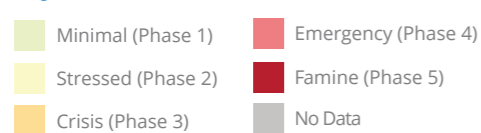
DR Congo Interim Country Strategic Plan (ICSP)

March - August 2019
US\$98.3m
Net funding requirement

2019 LEVEL 3 RESPONSE
REQUIREMENTS: US\$452.8



IPC Food Security Classification (August 2018)

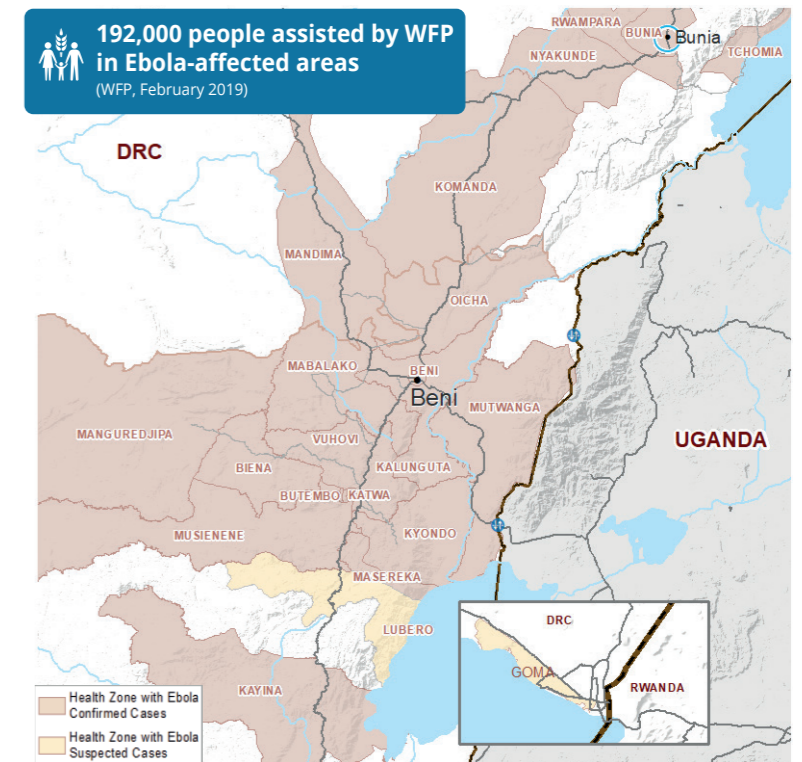


Sources: WFP, UNGIWG, GAUL, GLCSC, OCHA, UNHCR, IPC.

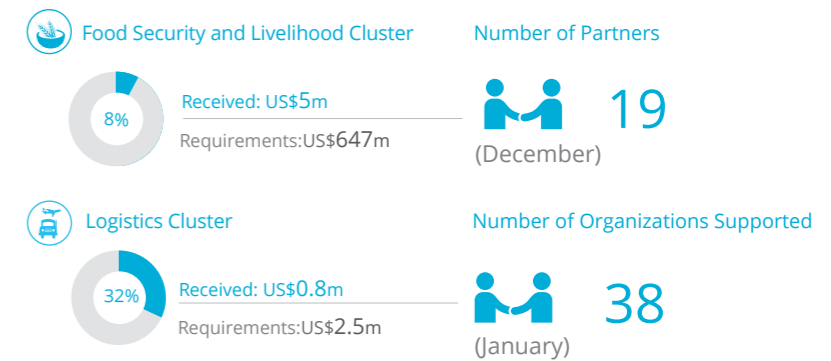
The designations employed and the presentation of material in the map(s) do not imply the expression of any opinion on the part of WFP concerning the legal or constitutional status of any country, territory, city or sea, or concerning the delimitation of its frontiers or boundaries. © World Food Programme 2019.

EBOLA AFFECTED HEALTH ZONES

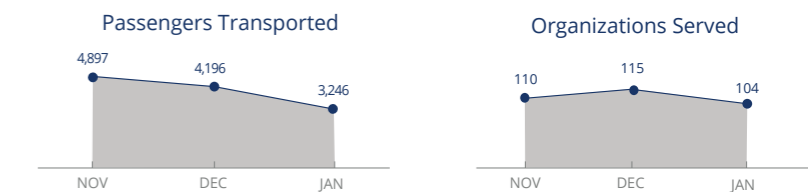
192,000 people assisted by WFP in Ebola-affected areas (WFP, February 2019)



WFP LED & SUPPORTED CLUSTERS



UN Humanitarian Air Service (UNHAS)



WFP LEVEL 3 EMERGENCY

SINCE 06 OCTOBER 2017 (LEVEL 2 EMERGENCY SINCE 12 DEC 2013)

For more information, see the SITUATION REPORT and COUNTRY BRIEF www.wfp.org/countries/congo-democratic-republic

2A Interim Country Strategic Plan (2018-2020)

Produced by the WFP Operations Centre (OPSCEN) jointly with Country Office and Regional Bureau Johannesburg. This dashboard is based on best available information at the time of production. Future updates may vary as new information becomes available.