



World Food Programme

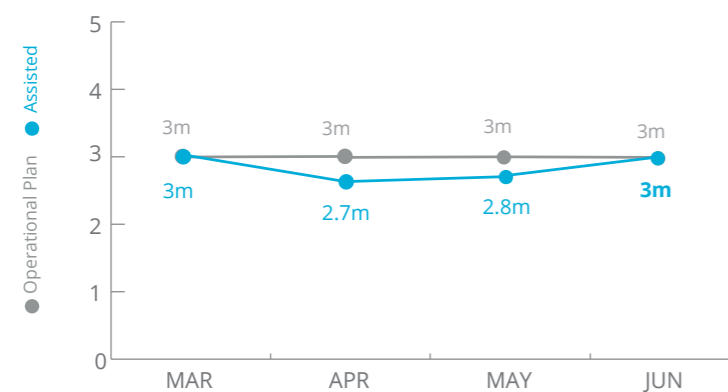
# Syria



## PEOPLE ASSISTED

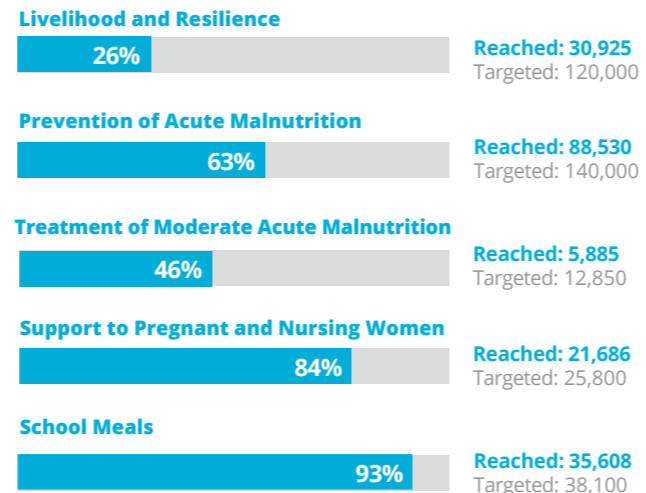
Transitional Interim Country Strategic Plan (T-ICSP)

Through Food Distributions



SOURCE: WFP, 19 JULY 2018

## OTHER ACTIVITIES JUNE 2018



## FUNDING

Syria Transitional Interim Country-Strategic Plan (T-ICSP)

August 2018 - January 2019

# US\$246m

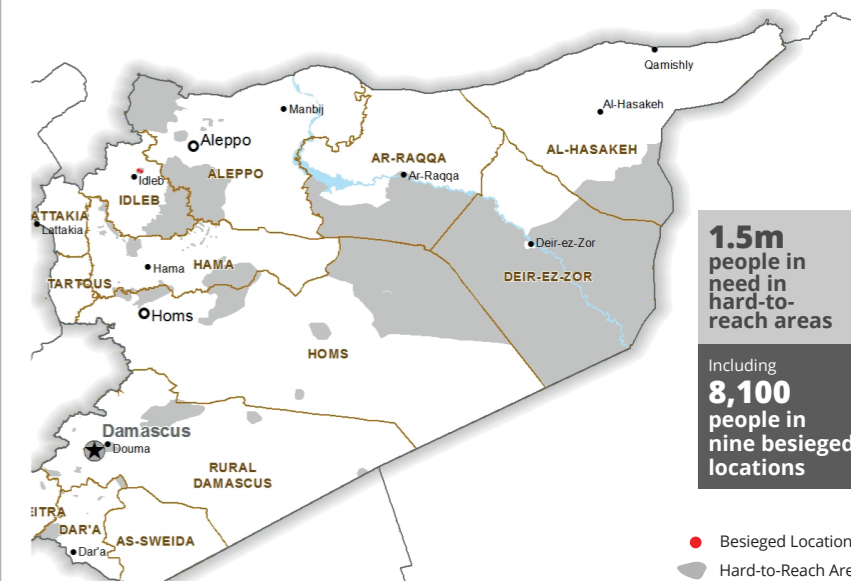
Net funding requirement

### 2018 LEVEL 3 RESPONSE

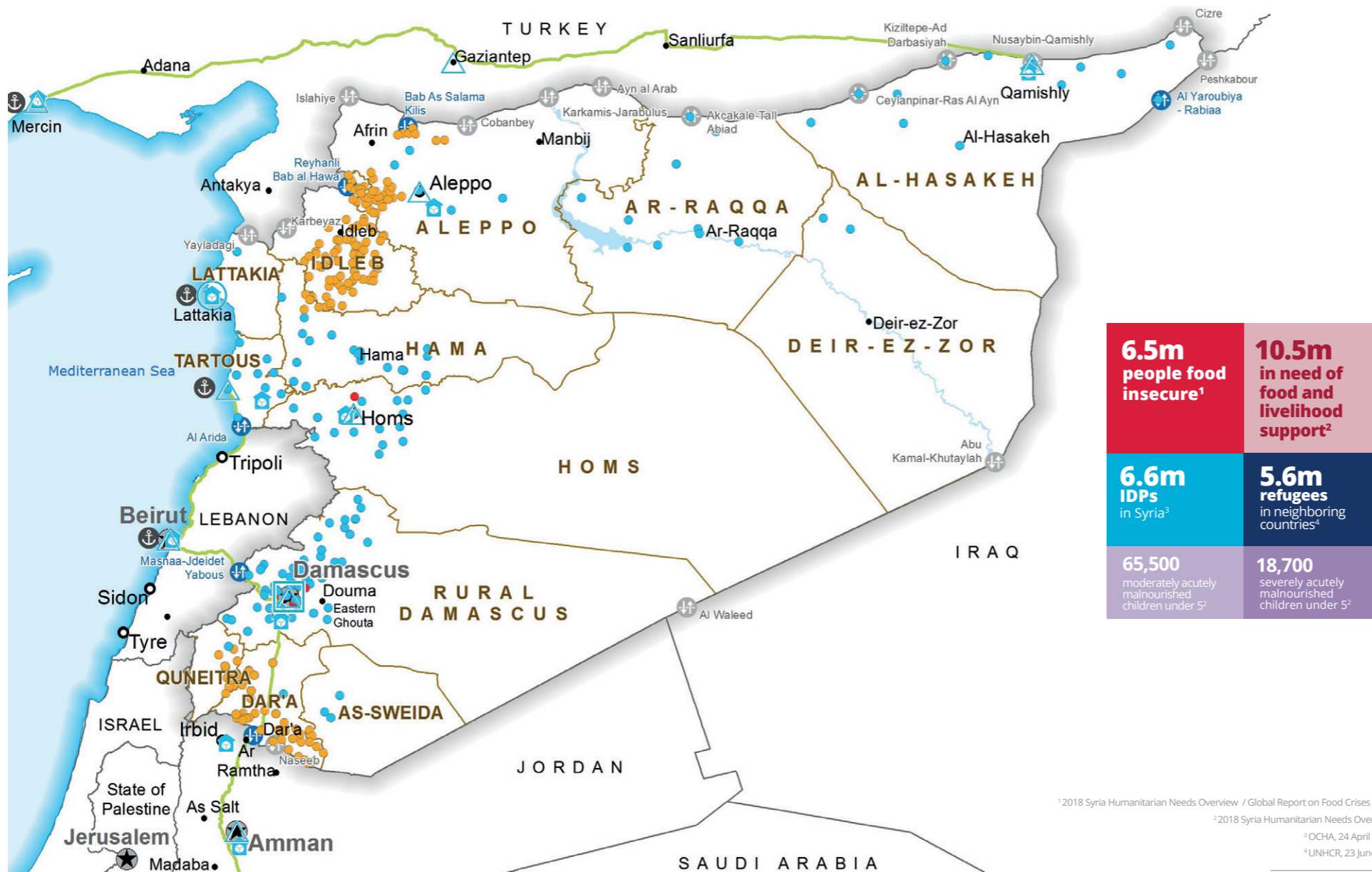


SOURCE: WFP, 19 JULY 2018

## HARD-TO-REACH AND BESIEGED AREAS



SOURCE: OCHA, 20 JUNE 2018



**6.5m** people food insecure<sup>1</sup>

**10.5m** in need of food and livelihood support<sup>2</sup>

**6.6m** IDPs in Syria<sup>3</sup>

**5.6m** refugees in neighboring countries<sup>4</sup>

**65,500** moderately acutely malnourished children under 5<sup>2</sup>

**18,700** severely acutely malnourished children under 5<sup>2</sup>

- Food Distribution Points (FDP)**
  - Blue circle: FDP Regular Deliveries
  - Red circle: FDP Cross-line Deliveries
  - Yellow circle: FDP Cross-border Deliveries
- Country Office**
  - Blue square: Country Office
  - Light blue circle: Sub Office
  - Blue triangle: Field Office
  - Blue house: Warehouse
- Road Supply Route**
  - Green line: Road Supply Route
  - Blue double line: Open Border Crossing Point
  - Blue dashed line: Sporadically Open Border Crossing Point
  - Blue circle with 'P': Port
- National Capital**
  - Star: National Capital
  - Circle: Major Town
  - Black circle: Intermediate Town
- International Boundary**
  - Black line: International Boundary
  - Yellow line: Governor Boundary
  - Blue line: River
  - Blue circle: Surface Waterbody

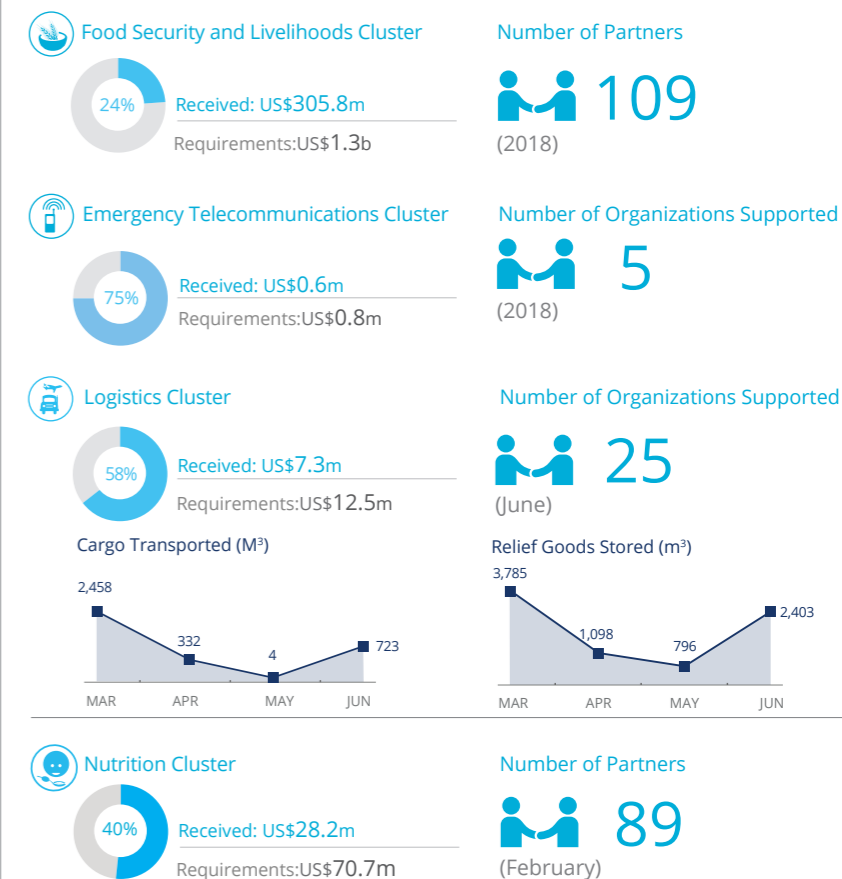
(June 2018)

<sup>1</sup>2018 Syria Humanitarian Needs Overview / Global Report on Food Crises 2018  
<sup>2</sup>2018 Syria Humanitarian Needs Overview  
<sup>3</sup>OCHA, 24 April 2018  
<sup>4</sup>UNHCR, 23 June 2018

Sources: OCHA, WFP, GLSC, UNGI, UNHCR, Geonames.

The designations employed and the presentation of material in the map(s) do not imply the expression of any opinion on the part of WFP concerning the legal or constitutional status of any country, territory, city or sea, or concerning the delimitation of its frontiers or boundaries.  
© World Food Programme 2018.

## WFP-LED AND SUPPORTED CLUSTERS



SOURCES: OCHA FTS, 20 JULY 2018; CLUSTERS, 20 JULY 2018

## WFP LEVEL 3 EMERGENCY SINCE 14 DECEMBER 2012

IASC LEVEL 3 EMERGENCY SINCE 15 JANUARY 2013

For more information, see the SITUATION REPORT and COUNTRY BRIEF [www.wfp.org/countries/syria](http://www.wfp.org/countries/syria)

**2A** Syria Transitional Interim Country Strategic Plan  
<http://documents.wfp.org/stellent/groups/public/documents/ep/WFP284303.pdf>

Produced by the WFP Operations Centre (OPSCEN) jointly with Country Office and Regional Bureau Dakar. This dashboard is based on best available information at the time of production. Future updates may vary as new information becomes available.