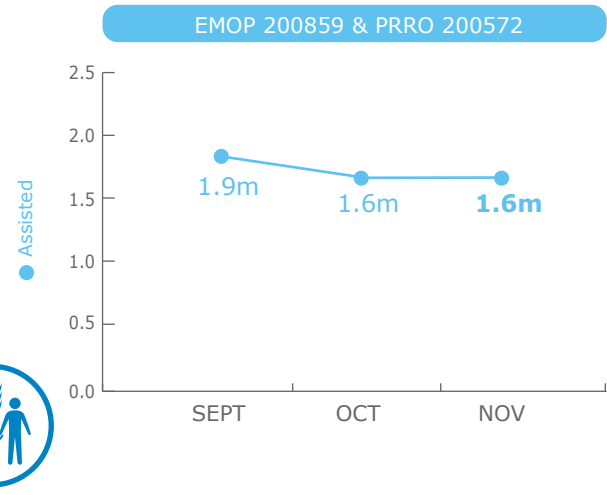
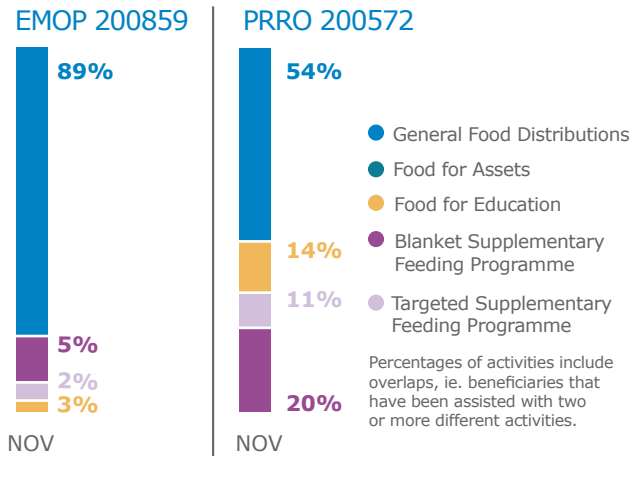


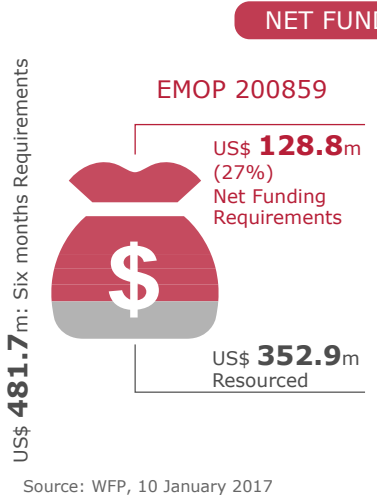
### PEOPLE ASSISTED



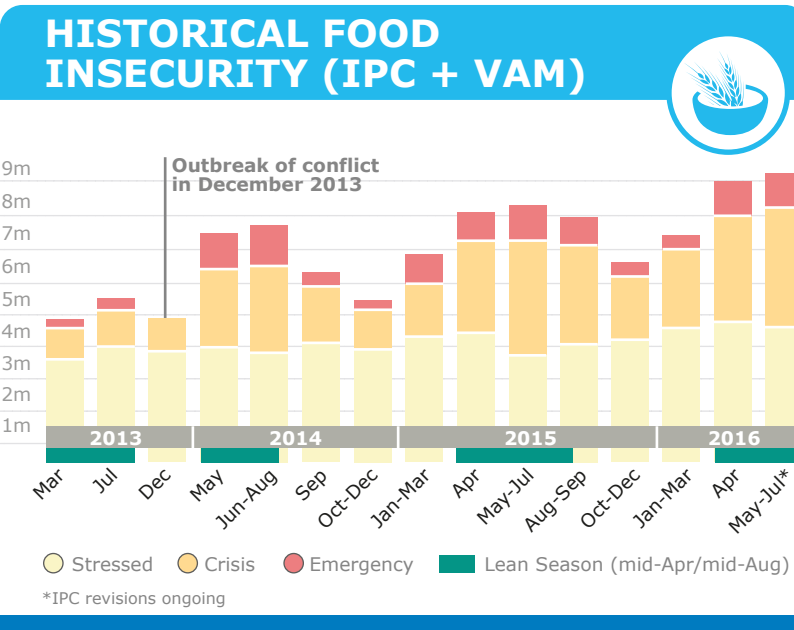
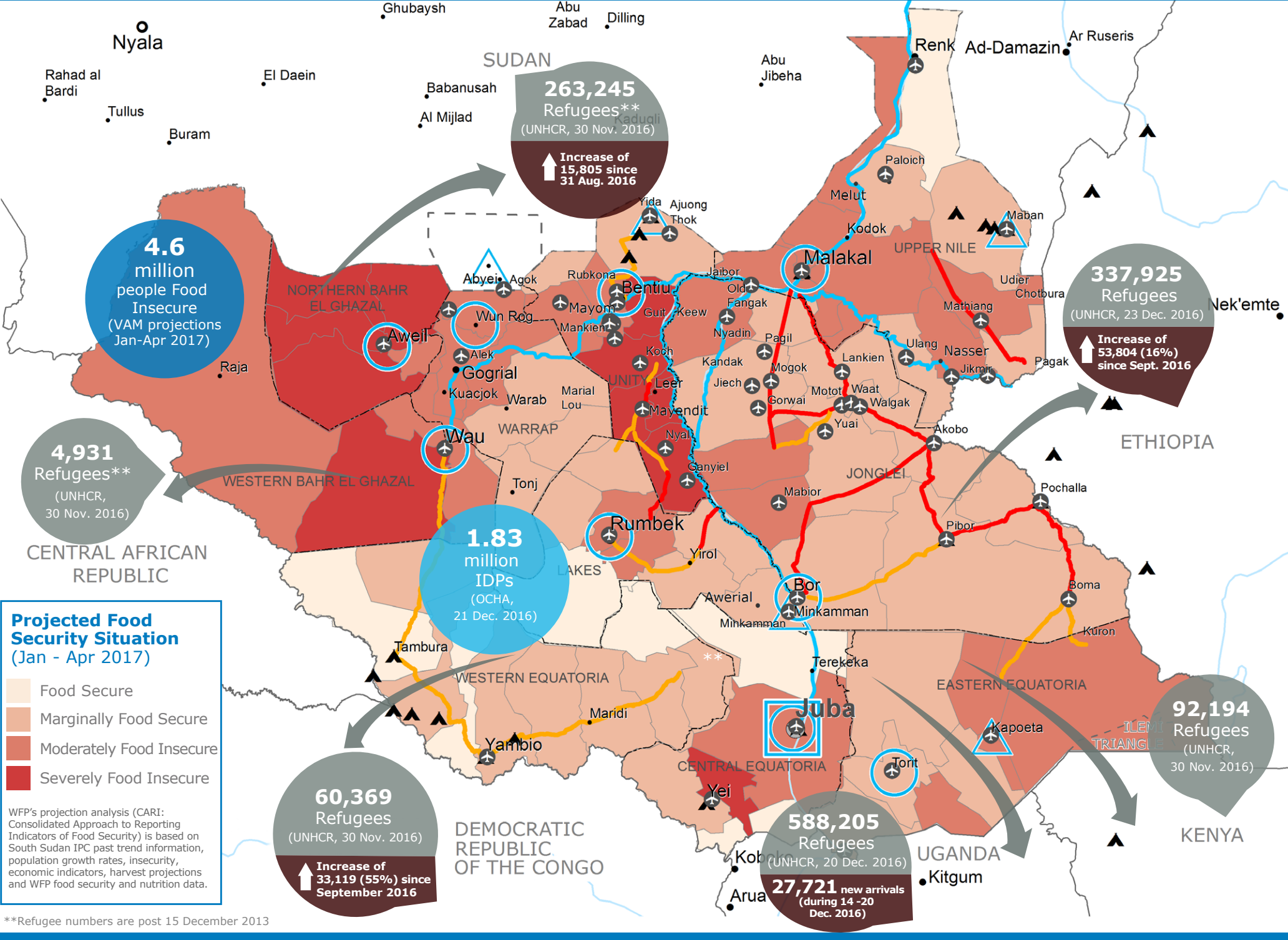
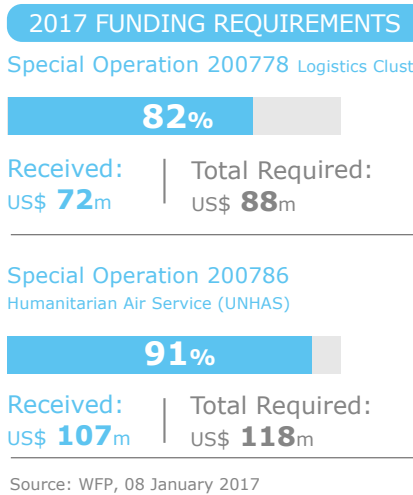
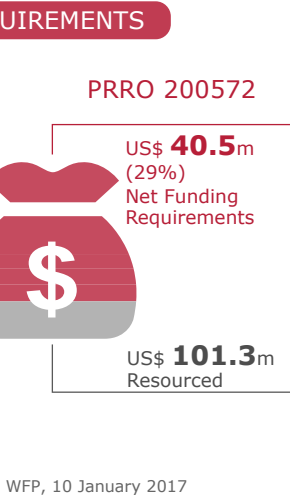
### OPERATIONAL PROFILE



### FUNDING



### NET FUNDING REQUIREMENTS



**WFP LEVEL 3 EMERGENCY**  
SINCE 23 DECEMBER 2013

For more information, see the **SITUATION REPORT** and **COUNTRY BRIEF** [www.wfp.org/countries/south-sudan](http://www.wfp.org/countries/south-sudan)

**2A** EMOP 200859  
[documents.wfp.org/stellent/groups/public/documents/ep/WFP284303.pdf](http://documents.wfp.org/stellent/groups/public/documents/ep/WFP284303.pdf)

Country Office, Sub Office, Field Office, Barge Supply Route, Closed Road, Road with Limited Access, Refugee / IDP Camp, UNHAS Connection, National Capital, Major Town, Intermediate Town, Small Town, International Boundary, Undetermined Boundary, Abyei Region, State Boundary

Sources: WFP, UNGIWG, GAUL, GLCSC, OCHA, UNHCR, IPC

The designations employed and the presentation of material in the map(s) do not imply the expression of any opinion on the part of WFP concerning the legal or constitutional status of any country, territory, city or sea, or concerning the delimitation of its frontiers or boundaries. © World Food Programme 2017

Produced by the WFP **Operations Centre (OPSCEN)** jointly with Country Office and Regional Bureau Nairobi

This dashboard is based on best available information at the time of production. Future updates may vary as new information becomes available.

