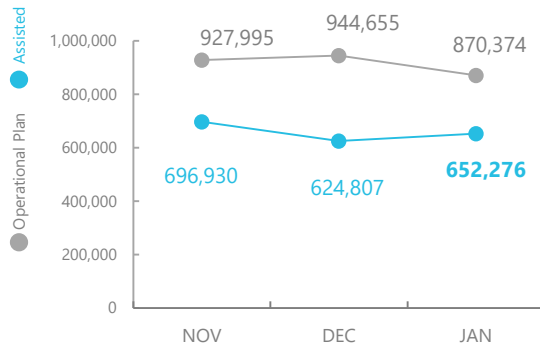
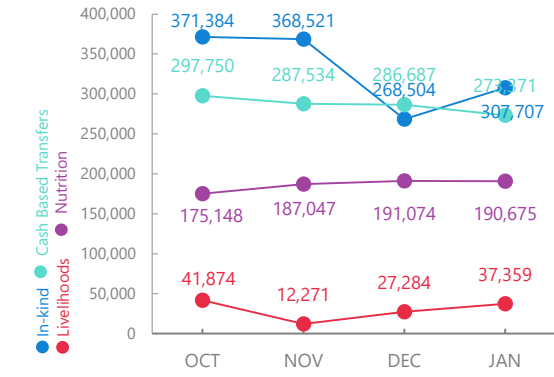


Nigeria

PEOPLE ASSISTED In Borno, Yobe and Adamawa States



OPERATIONAL PROFILE By Activity



FUNDING Nigeria Country Strategic Plan (CSP)

March – August 2020
Net funding requirements

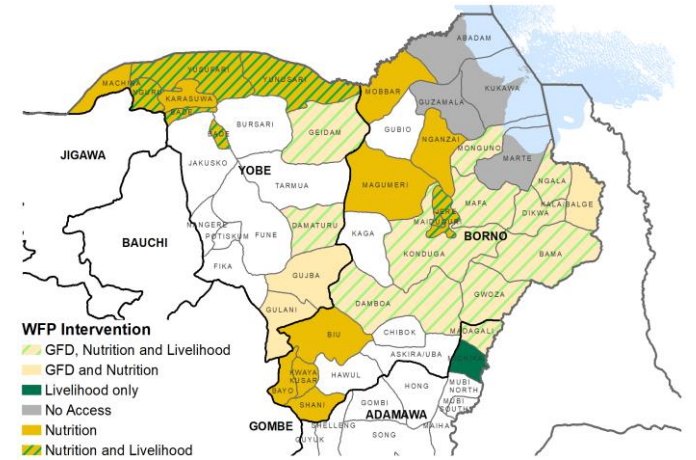
us\$111m

**2020 LEVEL 3 RESPONSE
(Entire Country Strategic Plan)**
Requirements: USD 288.3m
Contributions: USD 146.3m



SOURCE: WFP, 02 MAR 2020

WFP OPERATIONAL PRESENCE

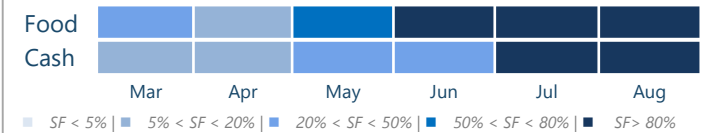


SOURCE: CO, 10 February 2020

AVERAGE MONTHLY FUNDING REQUIREMENTS

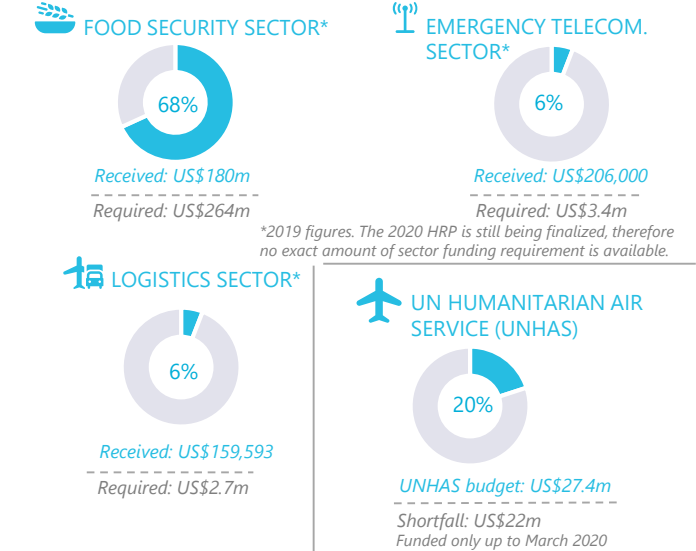
Food US\$ 11.6m **Cash US\$ 12.7m**

EXPECTED SHORTFALLS



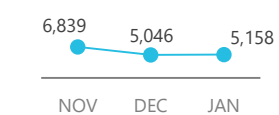
SOURCE: WFP, 28 FEB 2020

WFP-LED AND CO-LED SECTORS

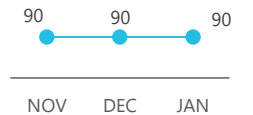


SOURCE: WFP, 03 MAR 2020

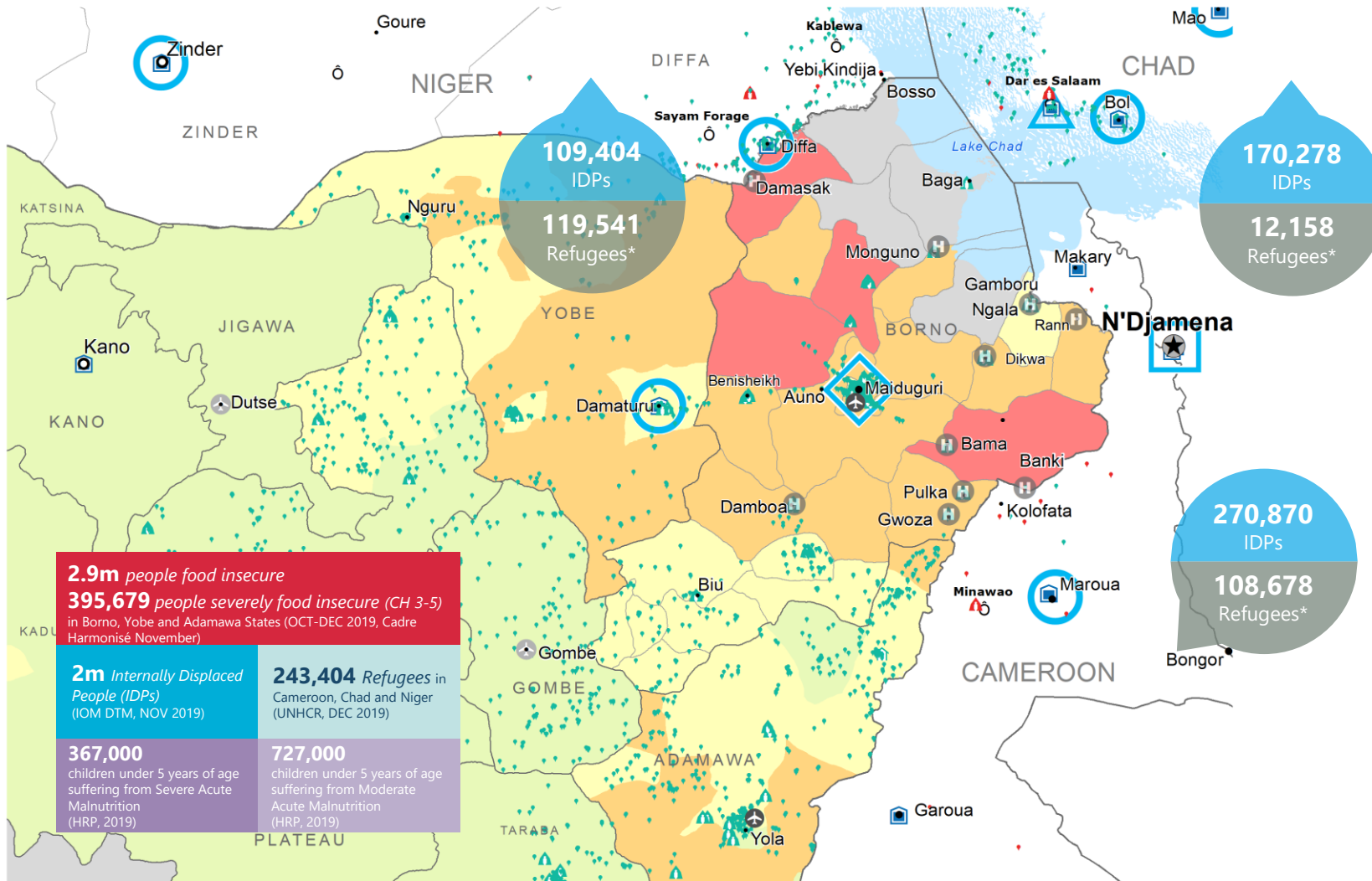
Passengers Transported (UNHAS)



Organizations Served (UNHAS)



SOURCE: WFP, 06 FEB 2020. Shortfalls exclude cost recovery



2.9m people food insecure
395,679 people severely food insecure (CH 3-5)
in Borno, Yobe and Adamawa States (OCT-DEC 2019, Cadre Harmonisé November)

2m Internally Displaced People (IDPs)
(IOM DTM, NOV 2019)

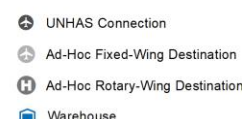
243,404 Refugees in Cameroon, Chad and Niger (UNHCR, DEC 2019)

367,000 children under 5 years of age suffering from Severe Acute Malnutrition (HRP, 2019)

727,000 children under 5 years of age suffering from Moderate Acute Malnutrition (HRP, 2019)

*UNHCR, 31 OCT 2019

CH Food Security Classification June - August 2020 Projection



Sources: WFP, UNGIWG, GAUL, GLCSC, OCHA, UNHCR.

The designations employed and the presentation of material in the map(s) do not imply the expression of any opinion on the part of WFP the delimitation of its frontiers or boundaries. © World Food Programme 2020.

WFP LEVEL 3 EMERGENCY SINCE 11 AUGUST 2016



For more information, see the SITUATION REPORT and COUNTRY BRIEF
<https://www1.wfp.org/countries/nigeria>

Nigeria Country Strategic Plan
https://docs.wfp.org/api/documents/WFP-0000101930/download/?_ga=2.211211158.2010349590.1564781252-114077222.1558363545

Produced by the WFP Operations Centre (OPSCEN) jointly with Country Office and Regional Bureau Dakar. This dashboard is based on best available information at the time of production. Future updates may vary as new information becomes available.