



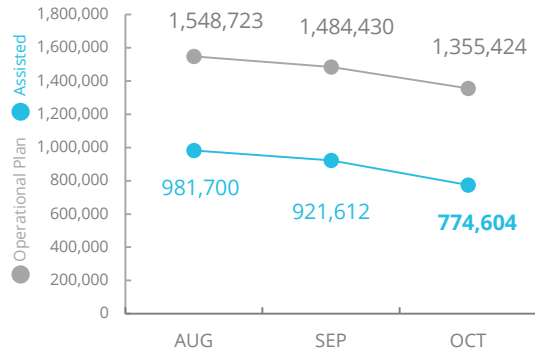
World Food Programme

Emergency Dashboard | November 2019

# Democratic Republic of Congo



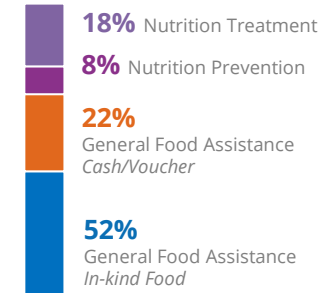
**PEOPLE ASSISTED**  
DR Congo Interim Country Strategic Plan (ICSP)  
(Activities covered by WFP L3 Emergency Response)



SOURCE: WFP, 04 DEC 2019

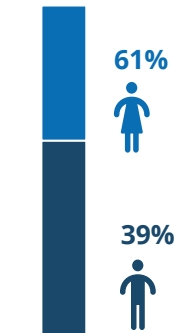


**OPERATIONAL PROFILE**  
By Activity



OCT

By Gender



OCT

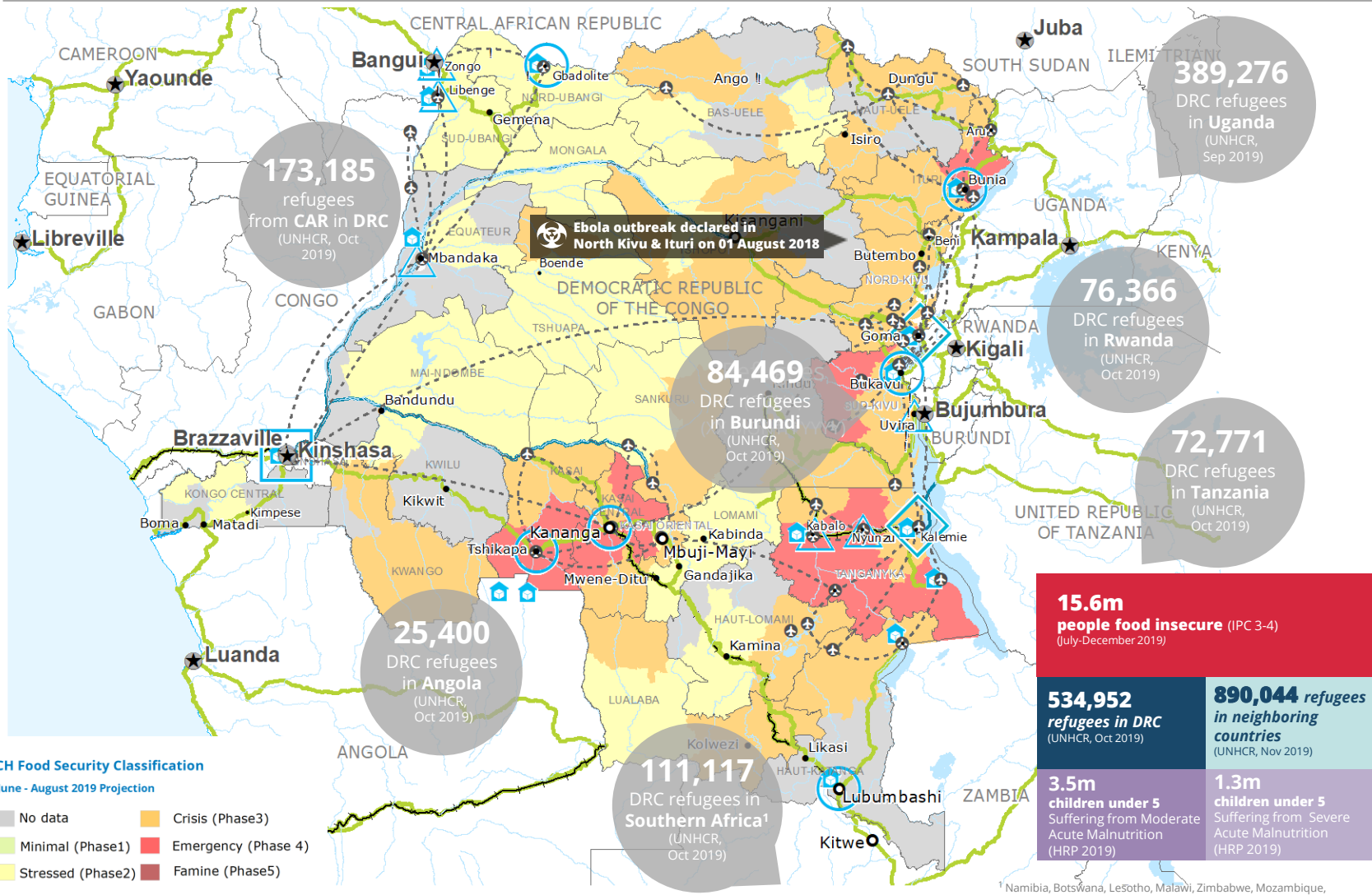
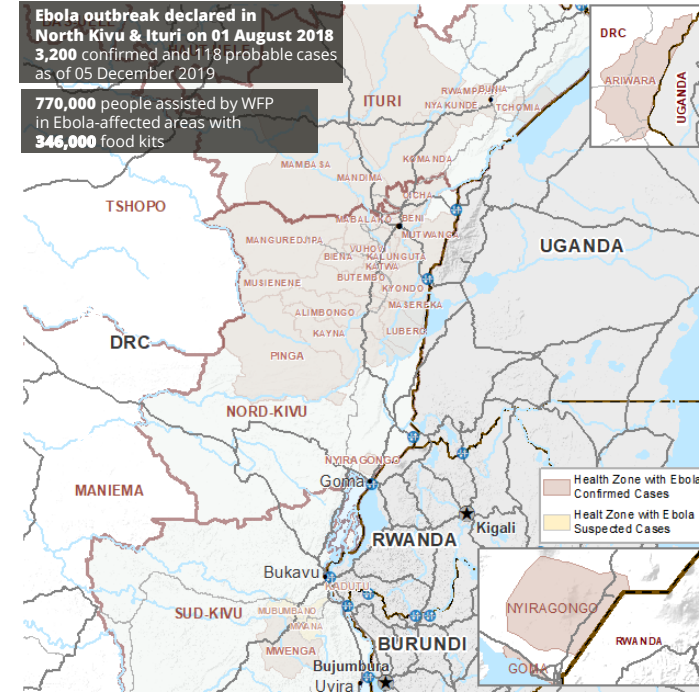


**FUNDING**  
DR Congo Level 3  
Emergency Response

December 2019 - May 2020  
**USD 151m**  
Net funding requirements

SOURCE: WFP, 06 DEC 2019

## EBOLA-AFFECTED HEALTH ZONES



## WFP-LED AND SUPPORTED CLUSTERS

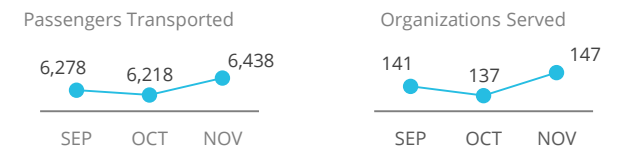
### FOOD SECURITY AND LIVELIHOOD CLUSTER



### LOGISTICS CLUSTER



## UN HUMANITARIAN AIR SERVICES (UNHAS)



SOURCE: WFP, 05 DEC 2019

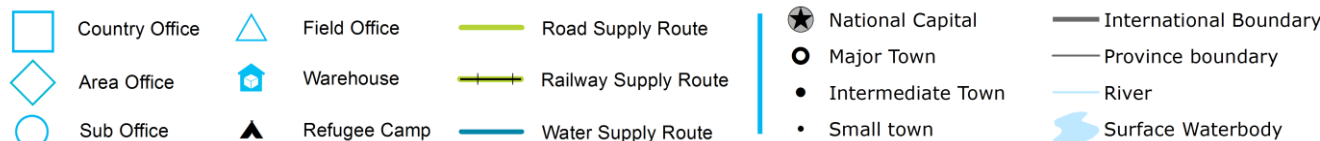
## WFP LEVEL 3 EMERGENCY

SINCE 06 OCTOBER 2017  
(LEVEL 2 EMERGENCY SINCE 12 DECEMBER 2013)

For more information, see the SITUATION REPORT and COUNTRY BRIEF  
[www.wfp.org/countries/congo-democratic-republic](http://www.wfp.org/countries/congo-democratic-republic)

DR Congo Interim Country Strategic Plan  
[https://documents.wfp.org/stellent/groups/public/documents/eb/wfp293190.pdf\\_ga=2.236369666.2010349590.1564781252.114077222.1558363545](https://documents.wfp.org/stellent/groups/public/documents/eb/wfp293190.pdf_ga=2.236369666.2010349590.1564781252.114077222.1558363545)

Produced by the WFP Operations Centre (OPSCEN) jointly with Country Office and Regional Bureau Johannesburg. This dashboard is based on best available information at the time of production. Future updates may vary as new information becomes available.



Sources: WFP, UNGIWG, GAUL, GLCSC, OCHA, UNHCR, IPC.

The designations employed and the presentation of material in the map(s) do not imply the expression of any opinion on the part of WFP concerning the legal or constitutional status of any country, territory, city or sea, or concerning the delimitation of its frontiers or boundaries. © World Food Programme 2019.

SAVING LIVES  
CHANGING LIVES