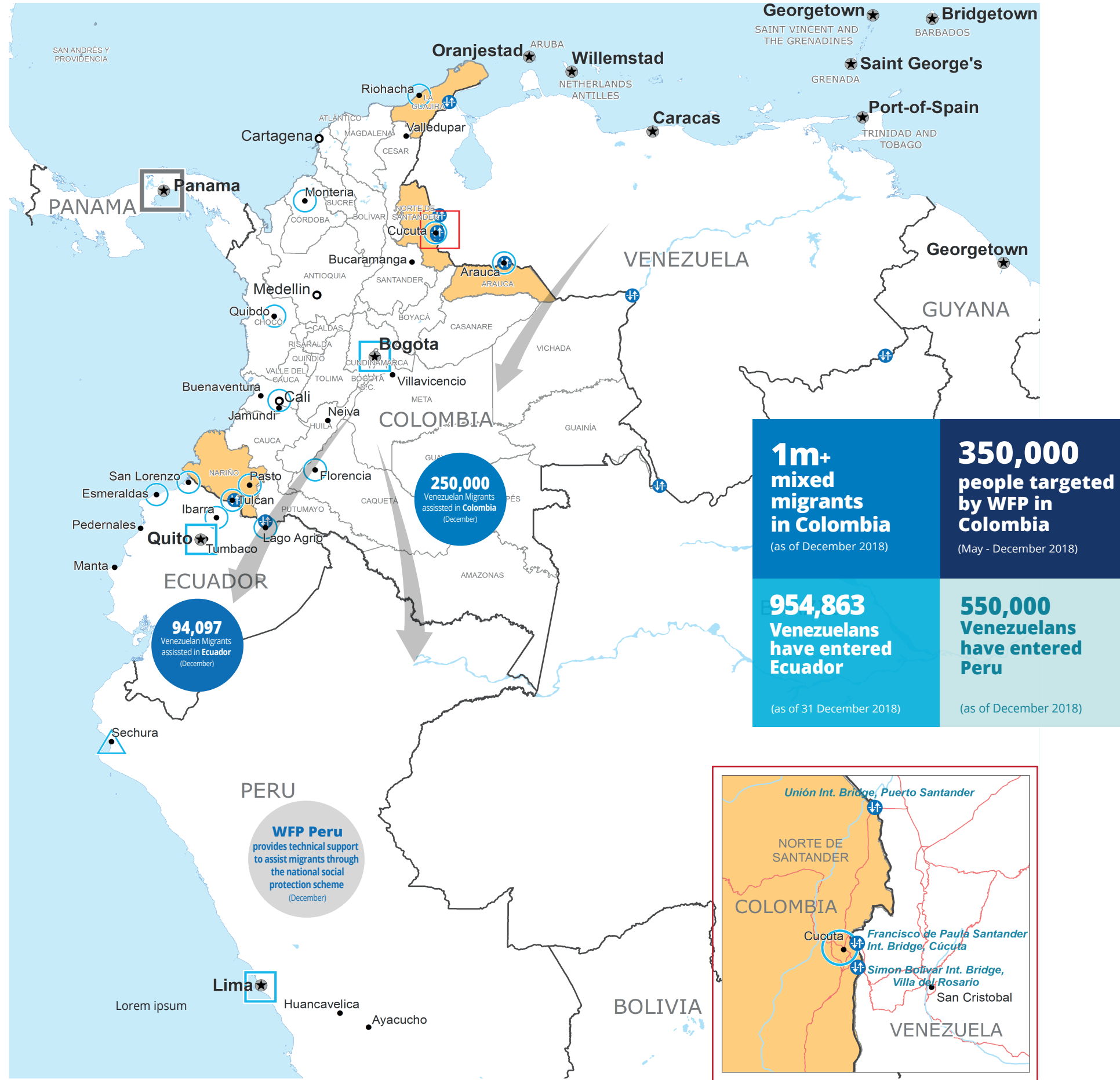


# Colombia - Venezuela Border Crisis



- Regional Bureau
- Country Office
- Sub Office
- Field Office
- WFP Operational Presence for L2 Response
- Intermediate Town
- Small Town
- Border Crossing Point
- International Boundary
- Department Boundary
- River
- Surface Waterbody

Sources: WFP, UNGIWG, GAUL, GLCSC, OCHA, UNHCR, Colombian Migration Authority, Ministry of Interior - Ecuador. The designations employed and the presentation of material in the map(s) do not imply the expression of any opinion on the part of WFP concerning the legal or constitutional status of any country, territory, city or sea, or concerning the delimitation of its frontiers or boundaries.  
© World Food Programme 2018.

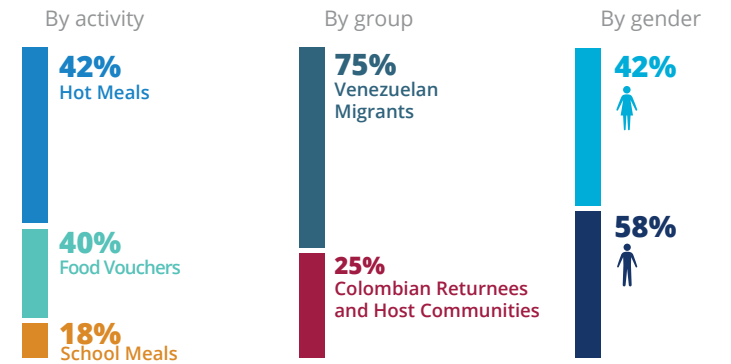


## PEOPLE ASSISTED BY WFP COLOMBIA

SO 2: WFP Colombia-Venezuela Border Crisis Response

# 250,000

people assisted (April - December 2018)



SOURCE: WFP, JANUARY 2018



## PEOPLE ASSISTED BY WFP ECUADOR

SO 1: WFP Colombia-Venezuela Border Crisis Response

# 94,097

people assisted (January - December 2018)



## FUNDING

**WFP Colombia SO2: Colombia-Venezuela Border Crisis Response**  
February - July 2019



**WFP Ecuador SO1: Colombia-Venezuela Border Crisis Response**  
January - June 2019



\*ORIGINAL ESTIMATES INCLUDING INTERNAL LOAN OF USD 10 MILLION  
SOURCE: WFP, 17 JANUARY 2019



## COOPERATING PARTNERS

WFP Colombia  
Number of Partners



WFP Ecuador  
Number of Partners



SOURCES: WFP, 31 OCTOBER 2018

## WFP LEVEL 2 EMERGENCY

SINCE 30 March 2018

For more information, see the latest SITUATION REPORT and COUNTRY BRIEFS  
[www.wfp.org/countries/colombia](http://www.wfp.org/countries/colombia)



**Colombia Country Strategic Plan (2017-2021)**

<http://documents.wfp.org/stellent/groups/public/documents/ep/WFP284303.pdf>

Produced by the WFP Operations Centre (OPSCEN) jointly with Country Office and Regional Bureau Panama. This dashboard is based on best available information at the time of production. Future updates may vary as new information becomes available.