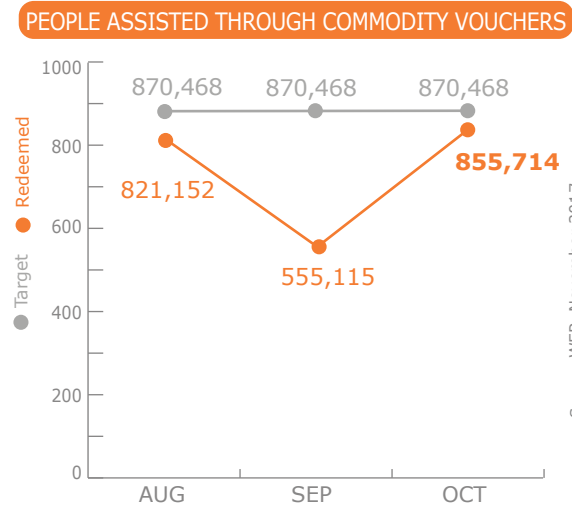
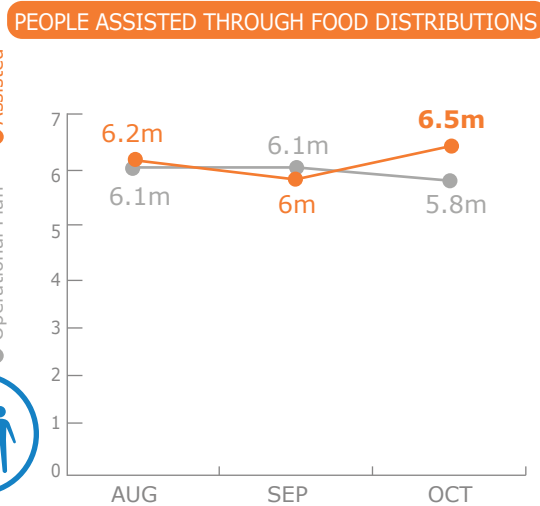


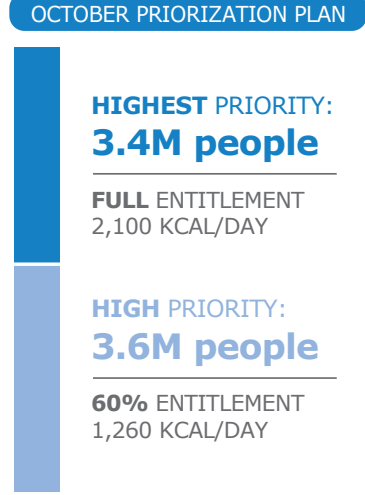
PEOPLE ASSISTED

Emergency Operation 201068

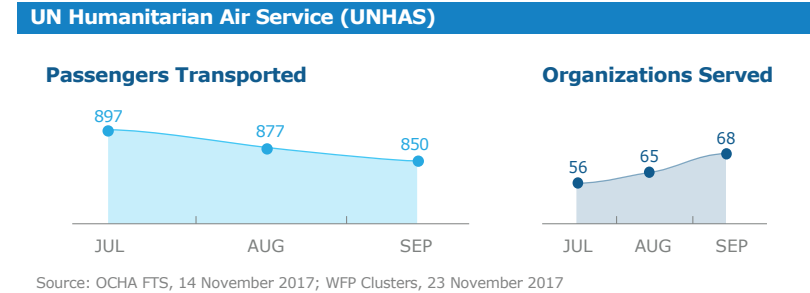
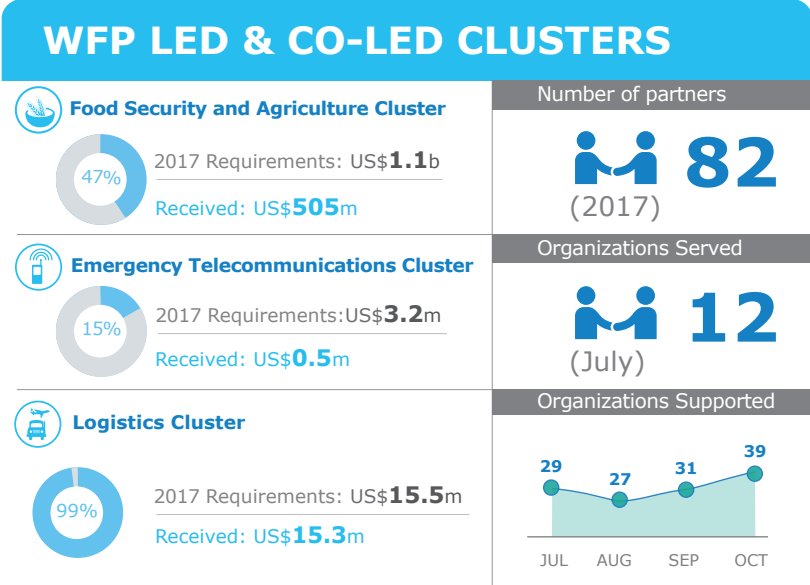
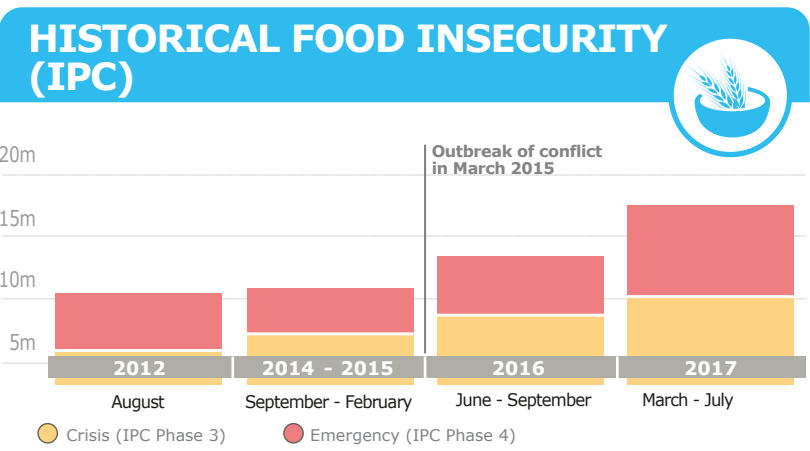
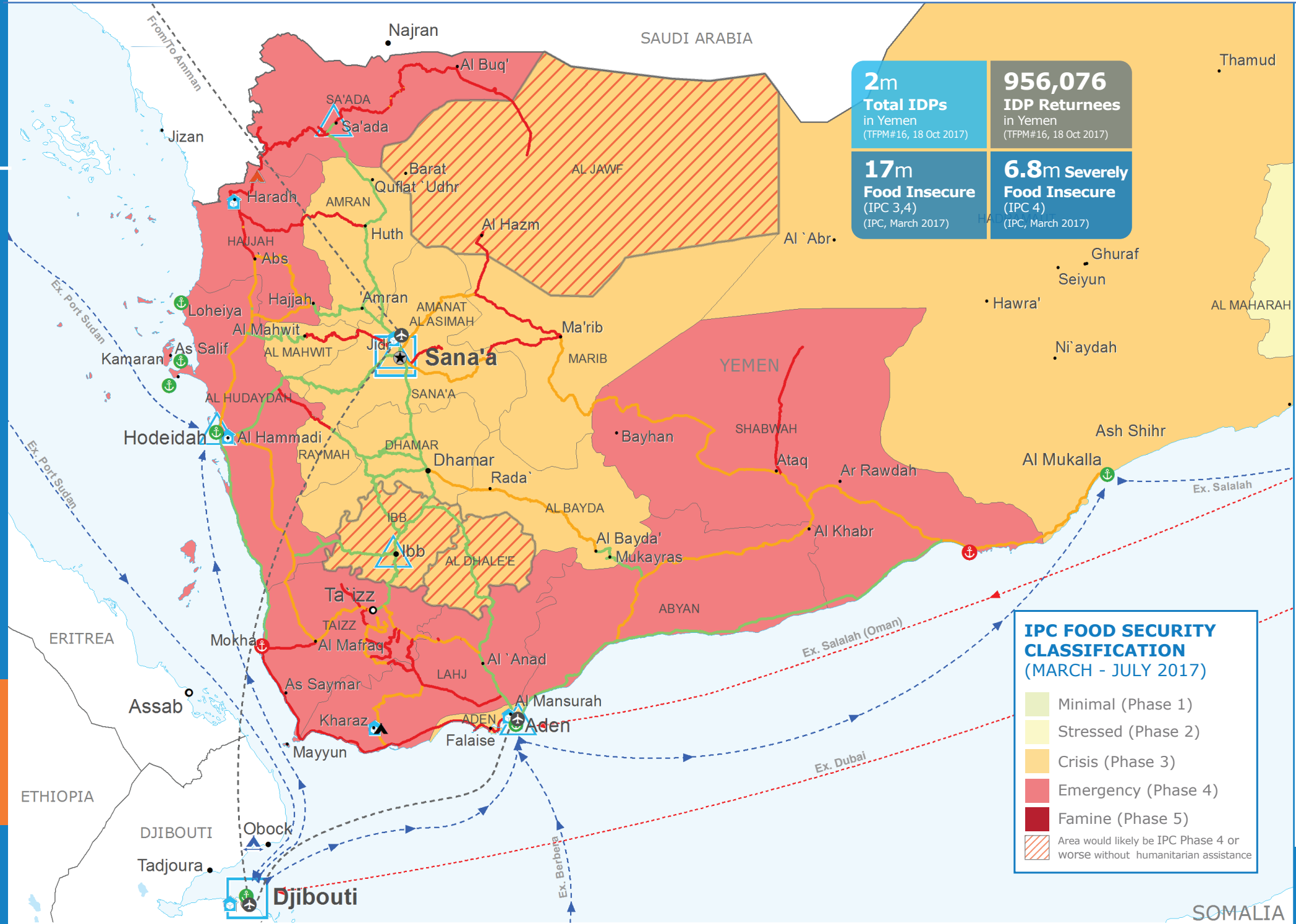
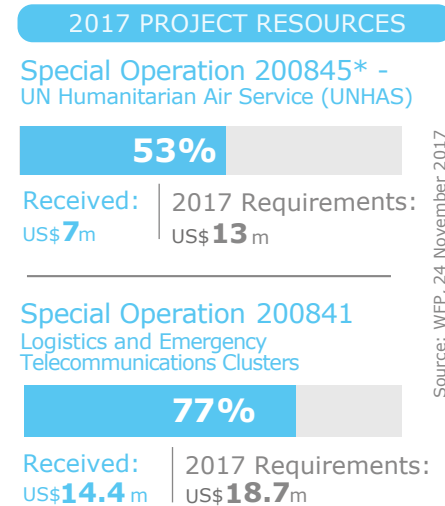


PEOPLE TARGETED

Emergency Operation 201068



FUNDING



WFP LEVEL 3 EMERGENCY
SINCE 03 JULY 2015 IASC LEVEL 3 (SINCE 01 JULY 2015)
For more information, see the **SITUATION REPORT** and **COUNTRY BRIEF** www.wfp.org/countries/yemen

Emergency Operation 200890
<http://documents.wfp.org/stellent/groups/public/documents/ep/WFP284303.pdf>

Produced by the WFP Operations Centre (OPSCEN) jointly with Country Office and Regional Bureau Cairo. This dashboard is based on best available information at the time of production. Future updates may vary as new information becomes available.

WFP SAYS NO to GENDER BASED VIOLENCE



- Country Office
- Field Office
- Warehouse
- IDP Camp
- Refugee Camp
- Transit Camp
- Sea Route Open
- Sea Route Closed
- UNHAS Connection
- UNHAS Route
- Port Operational
- Port with Restricted Access
- Port Closed
- Road Status
- Road Open
- Road With Restricted Access
- Closed Road
- National Capital
- Major Town
- Intermediate Town
- Small Town
- International Bounda
- Governorate Boundary

Sources: WFP, UNGIWG, GAUL, GLCSC, OCHA, UNHCR, Logistics Cluster, 16 June 2017. The designations employed and the presentation of material in the map(s) do not imply the expression of any opinion on the part of WFP concerning the legal or constitutional status of any country, territory, city or sea, or concerning the delimitation of its frontiers or boundaries. © World Food Programme 2017

Source: WFP, 24 November 2017
* Undergoing budget revision

Source: WFP, 23 November 2017

Source: OCHA FTS, 14 November 2017; WFP Clusters, 23 November 2017