



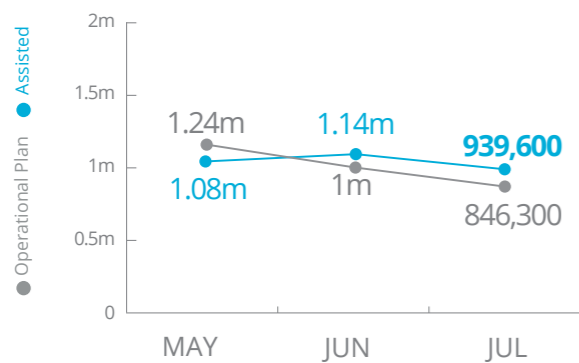
World Food Programme

Emergency Dashboard | August 2018

Democratic Republic of Congo

PEOPLE ASSISTED

DR Congo Interim Country Strategic Plan (ICSP)



SOURCE: WFP, 24 AUGUST 2018

OPERATIONAL PROFILE



PERCENTAGES MAY INCLUDE OVERLAPS, I.E. BENEFICIARIES THAT HAVE BEEN ASSISTED THROUGH TWO OR MORE

SOURCE: WFP, 24 JULY 2018

FUNDING

DR Congo Interim Country Strategic Plan (ICSP)

September 2018 – February 2019

US\$233.6m

Net funding requirement

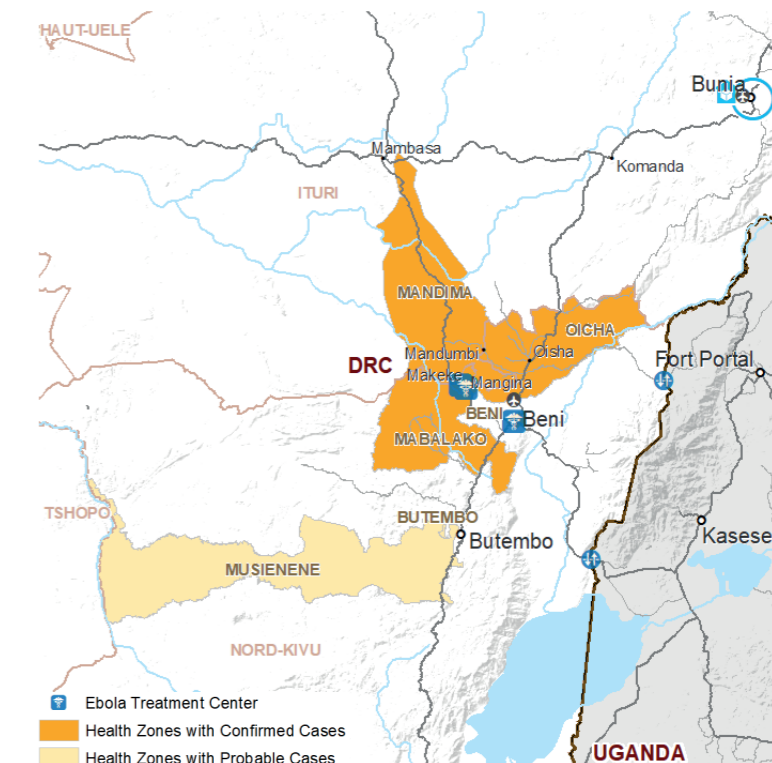
2018 LEVEL 3 RESPONSE*



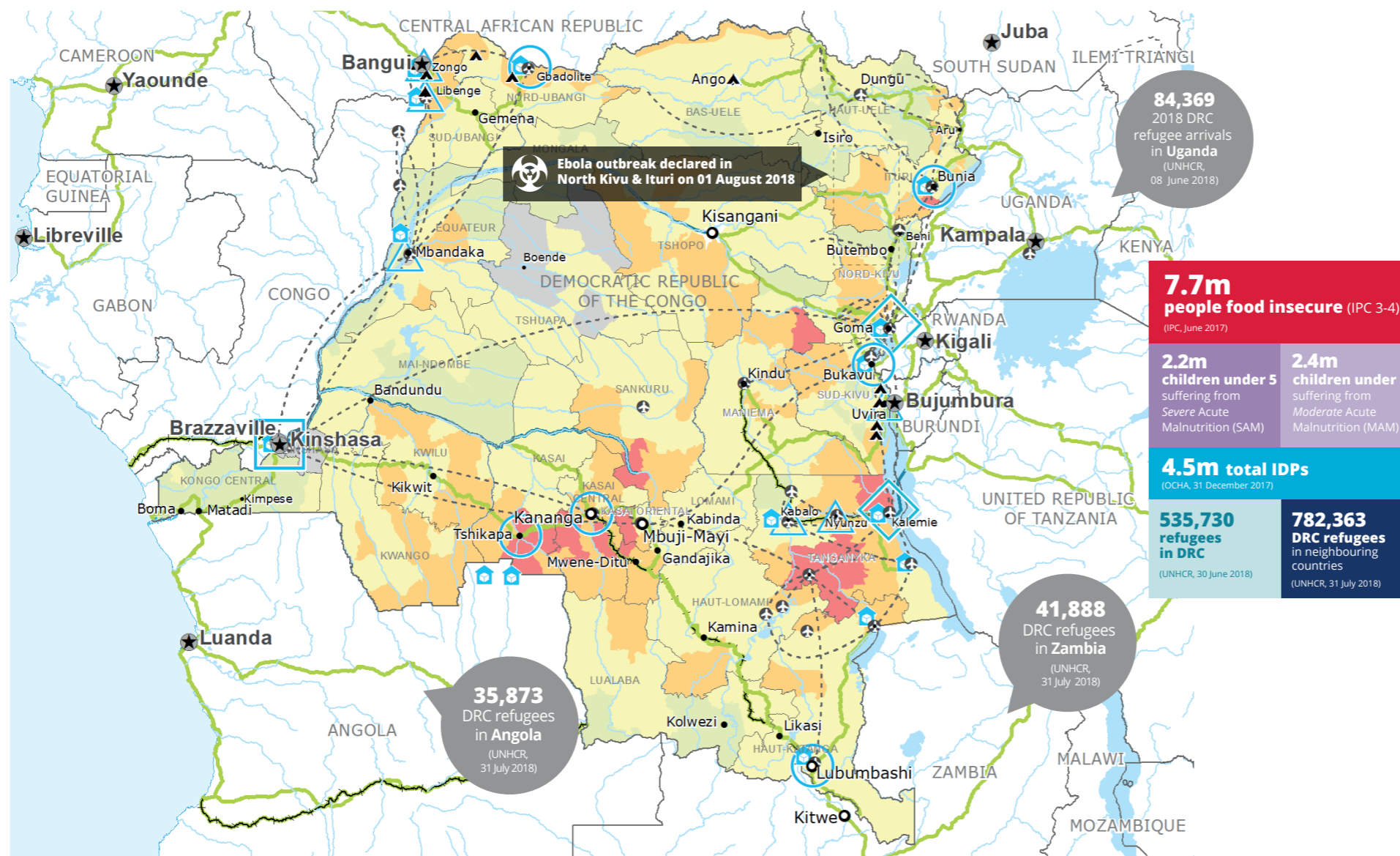
SOURCE: WFP, 30 AUGUST 2018

EBOLA AFFECTED HEALTH ZONES

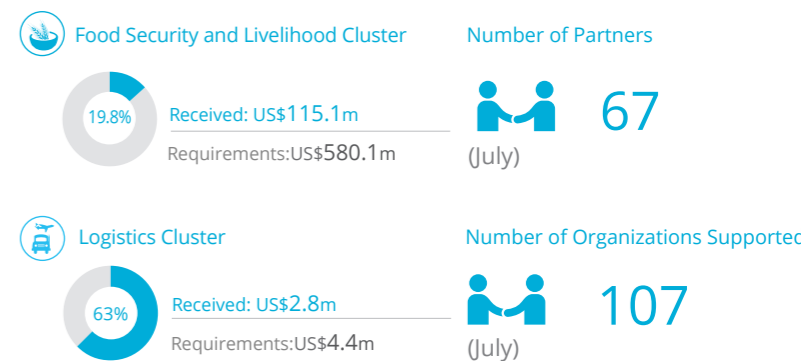
AS OF 30 AUGUST 2018



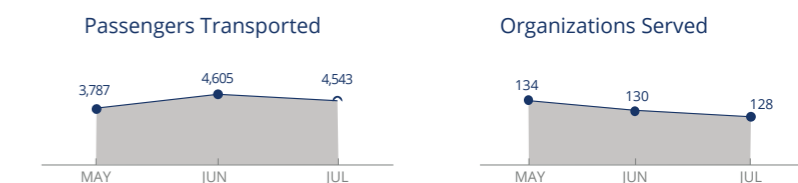
SOURCE: WHO, 30 AUGUST 2018



WFP LED & SUPPORTED CLUSTERS



UN Humanitarian Air Service (UNHAS)



SOURCES: OCHA FTS, 31 AUGUST 2018; WFP, 24 AUGUST 2018; CLUSTERS, 31 AUGUST 2018

WFP LEVEL 3 EMERGENCY

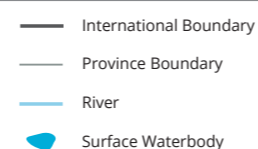
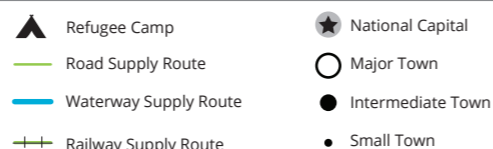
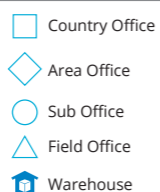
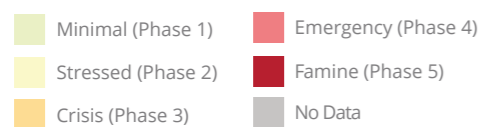
SINCE 06 OCTOBER 2017 (LEVEL 2 EMERGENCY SINCE 12 DEC 2013)

For more information, see the SITUATION REPORT and COUNTRY BRIEF www.wfp.org/countries/congo-democratic-republic

2A Interim Country Strategic Plan (2018-2020)

IPC Food Security Classification

(June 2017)



SOURCES: WFP, UNGIWI, GAUL, GLCSO, OCHA, UNHCR, IPC.

The designations employed and the presentation of material in the map(s) do not imply the expression of any opinion on the part of WFP concerning the legal or constitutional status of any country, territory, city or sea, or concerning the delimitation of its frontiers or boundaries. © World Food Programme 2018.

SAVING LIVES
CHANGING LIVES

Produced by the WFP Operations Centre (OPSCEN) jointly with Country Office and Regional Bureau Johannesburg. This dashboard is based on best available information at the time of production. Future updates may vary as new information becomes available.