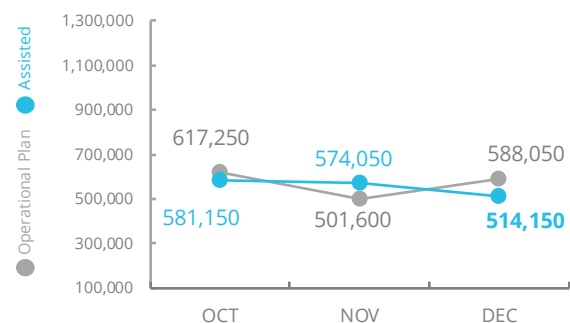
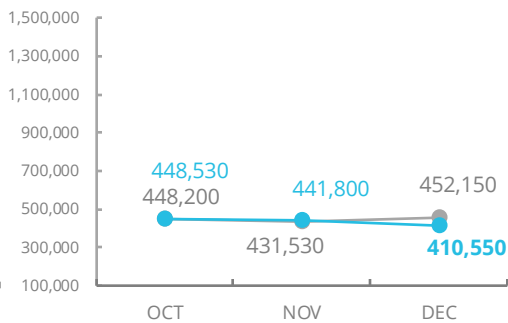


PEOPLE ASSISTED Country Strategic Plan (CSP)

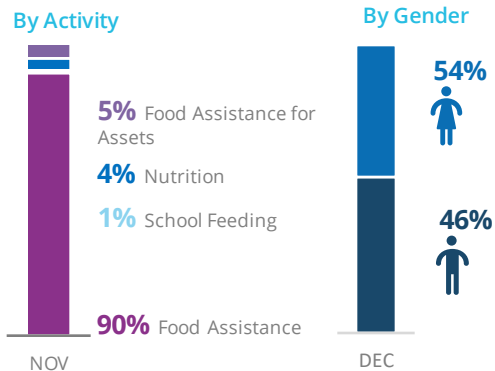


PEOPLE ASSISTED Crisis Response

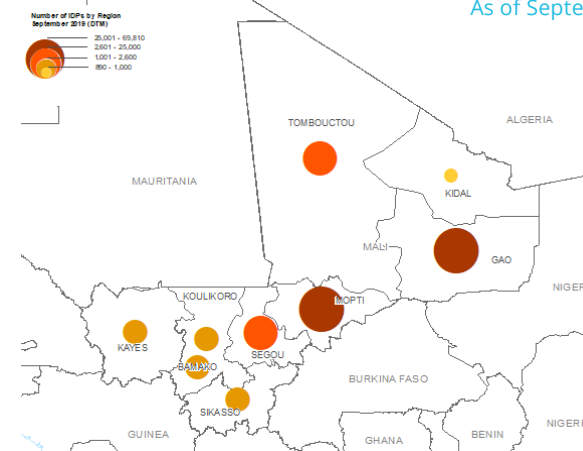


SOURCE: WFP, 01 FEB 2021

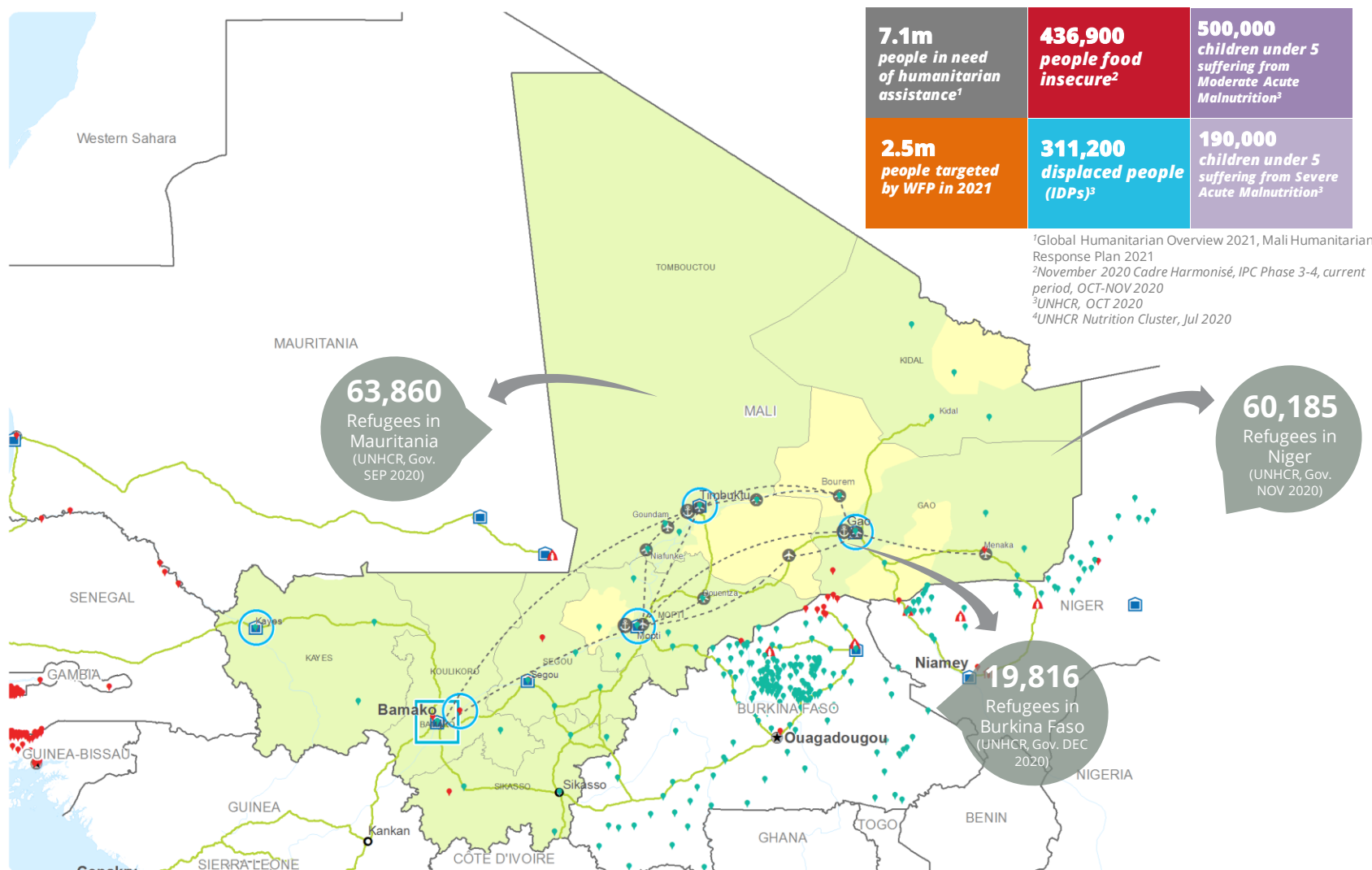
OPERATIONAL PROFILE



IDP CONCENTRATION MAP As of September 2019



SOURCE: UNCHR/WFP, 25 NOV 2019

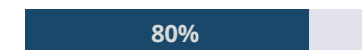


¹Global Humanitarian Overview 2021, Mali Humanitarian Response Plan 2021
²November 2020 Cadre Harmonisé, IPC Phase 3-4, current period, OCT-NOV 2020
³UNHCR, OCT 2020
⁴UNHCR Nutrition Cluster, Jul 2020

FUNDING Mali Country Strategic Plan (CSP 2020-2024)

February – July 2021

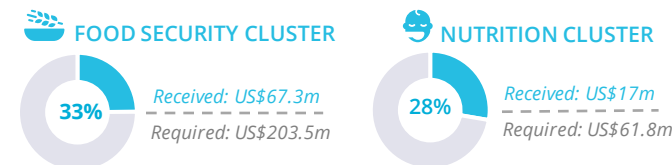
US\$39.9m
Net funding requirements



2021 Requirements: US\$ 119m

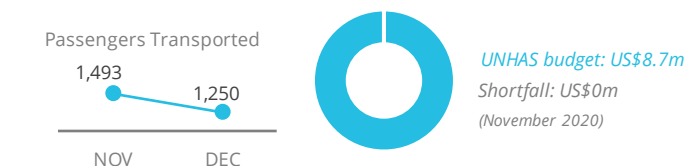
SOURCE: WFP, 22 JAN 2021

WFP-LED AND SUPPORTED CLUSTERS



SOURCE: FTIS JAN 2021
Data for 2021 is not yet available yet

UN HUMANITARIAN AIR SERVICES (UNHAS)



SOURCE: WFP/UNHAS, JAN 2021

WFP LEVEL 3 EMERGENCY

Level 2 Emergency since 12 January 2012 and part of the Central Sahel Level 3 Emergency since 09 September 2019

[SITUATION REPORT and COUNTRY BRIEFS](#)

[Mali CSP](#)



- CH Food Security Classification** (October - December 2020)
- No data
- Minimal (Phase1)
- Stressed (Phase2)
- Crisis (Phase3)
- Emergency (Phase 4)
- Famine (Phase5)
- Country Office
- Sub Office
- Field Office
- IDP Camp
- IDP Center
- IDP Location
- Refugee Camp
- Refugee Center
- Refugee Location
- Warehouse
- UNHAS Connection
- UNHAS Route
- Road Supply Route
- National Capital
- Major Town
- Intermediate Town
- Small town
- International Boundary
- Region Boundary
- River

Sources: WFP, UNGI/WG, GAUL, GLCSC, OCHA, UNHCR.

The designations employed and the presentation of material in the map(s) do not imply the expression of any opinion on the part of WFP concerning the legal or constitutional status of any country, territory, city or sea, or concerning the delimitation of its frontiers or boundaries. © World Food Programme 2020.