



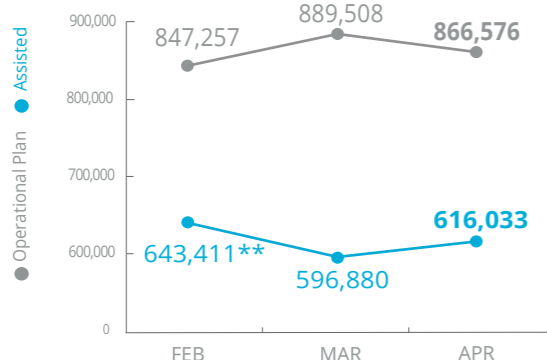
World Food Programme

Emergency Dashboard | May 2019

SAVING LIVES
CHANGING LIVES

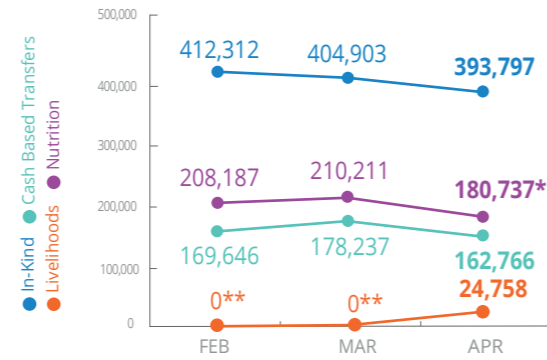
Nigeria

PEOPLE ASSISTED Borno, Yobe and Adamawa States



*Operational Plan revised under the Country Strategic Plan
** Two-month rations distributed in Jan to cover Jan and Feb needs

OPERATIONAL PROFILE by activity



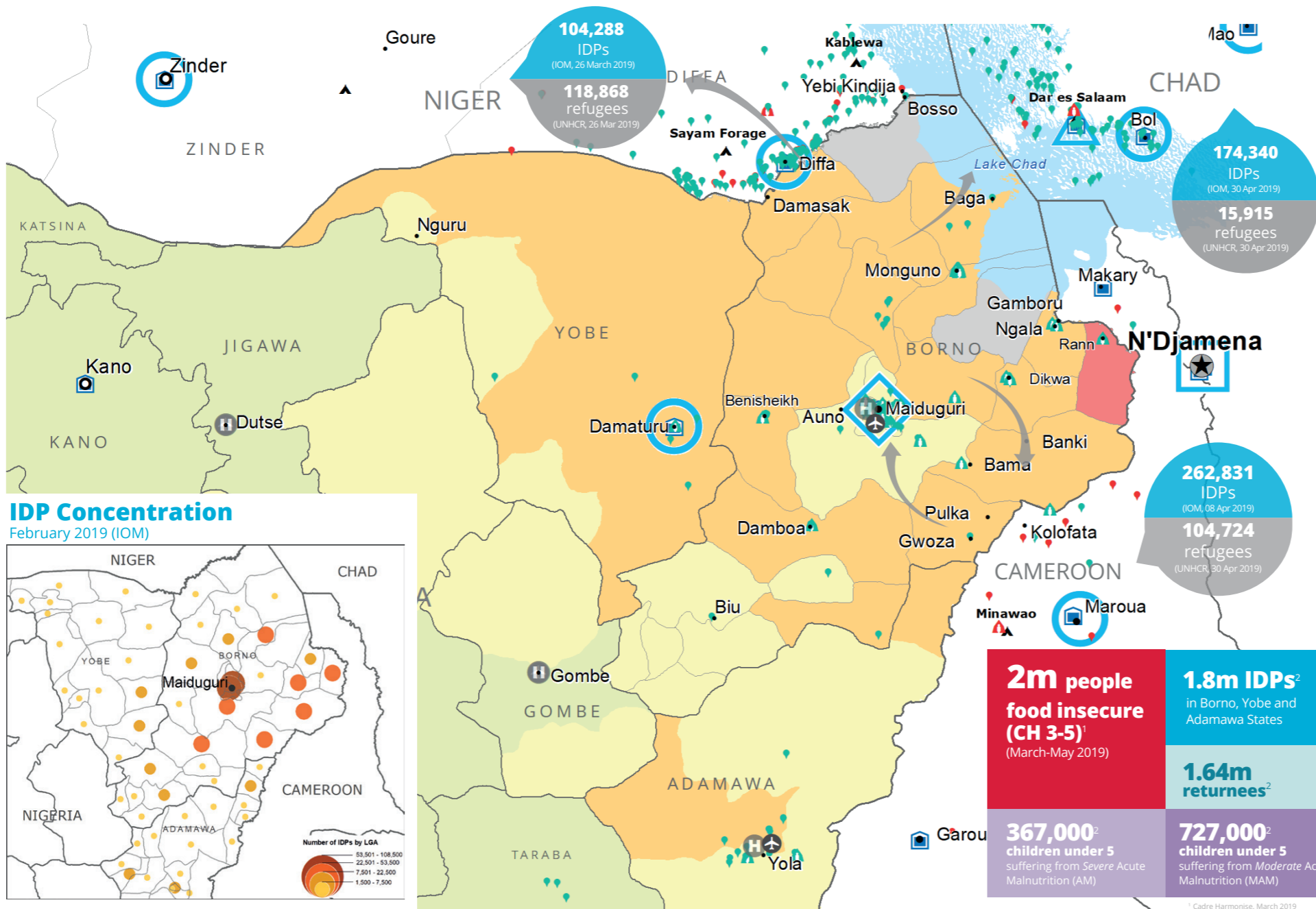
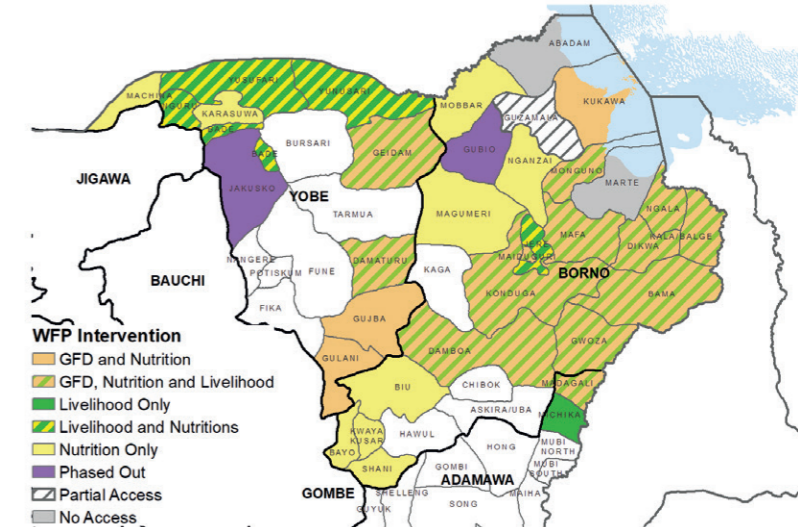
* 159,159 beneficiaries of nutrition prevention and treatment and 21,578 of Multi-Sector Nutrition Prevention activities.
** Preparatory activities are on-going.

FUNDING Nigeria Country Strategic Plan (CSP)

June - November 2019
Net funding requirement
US\$ 47.8m

2019 LEVEL 3 RESPONSE REQUIREMENTS: US\$ 242.7m

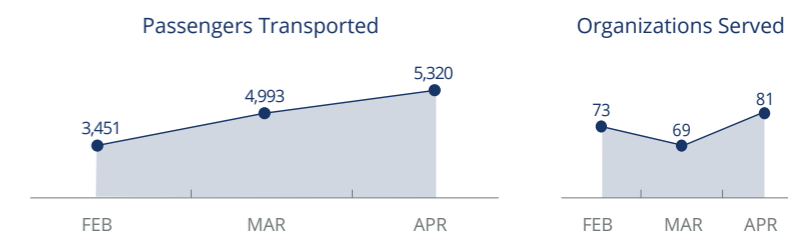
WFP OPERATIONAL PRESENCE GFD, NUTRITION AND LIVELIHOOD INTERVENTIONS IN ADAMAWA, BORNO AND YOBE STATES January to September 2019



WFP-LED AND SUPPORTED SECTORS



UN Humanitarian Air Service (UNHAS)



SOURCES: OCHA FTS AND WFP, 27 MAY 2019

WFP LEVEL 3 EMERGENCY SINCE 11 AUGUST 2016

For more information, see the SITUATION REPORT and COUNTRY BRIEF www.wfp.org/countries/nigeria

2A Country Strategic Plan
<http://documents.wfp.org/stellent/groups/public/documents/ep/WFP284303.pdf>

- IPC Food Security Classification (Projected October - December 2018)**
 - No data
 - Minimal (Phase 1)
 - Stressed (Phase 2)
 - Crisis (Phase 3)
 - Emergency (Phase 4)
 - Famine (Phase 5)
- Country Office**
- Area Office**
- Sub Office**
- Field Office**
- UNHAS Connection**
 - Ad-Hoc Fixed-Wing Destination
 - Ad-Hoc Rotary-Wing Destination
 - Warehouse
- IDP Camp**
- IDP Center**
- IDP Location**
- Refugee Camp**
- Refugee Center**
- Refugee Location**
- National Capital**
- Major Town**
- Intermediate Town**
- Small town**
- International Boundary**
- Province boundary**
- River**

Sources: WFP, UNGIWG, GAUL, GLCSc, OCHA, UNHCR.

The designations employed and the presentation of material in the map(s) do not imply the expression of any opinion on the part of WFP concerning the legal or constitutional status of any country, territory, city or sea, or concerning the delimitation of its frontiers or boundaries. © World Food Programme 2018.

Produced by the WFP Operations Centre (OPSCEN) jointly with Country Office and Regional Bureau Dakar. This dashboard is based on best available information at the time of production. Future updates may vary as new information becomes available.