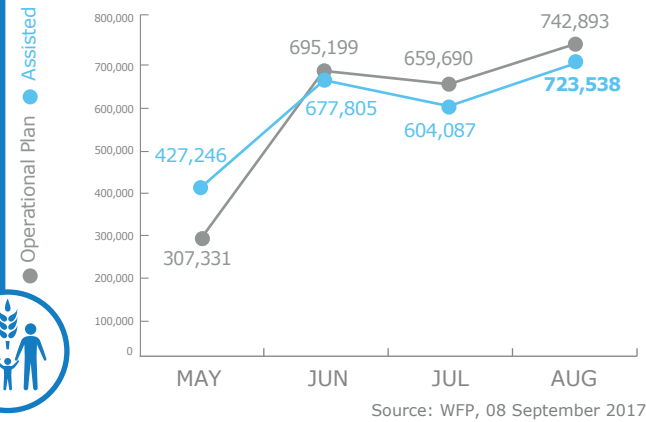
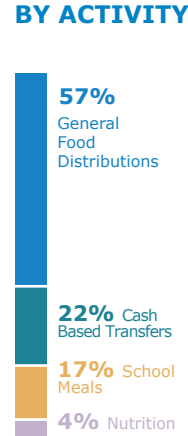


PEOPLE ASSISTED

Regional Emergency Operation 200777 +
Protracted Relief and Recovery Operation 200961



OPERATIONAL PROFILE



FUNDING

Protracted Relief and Recovery Operation 200961

Strengthening resilience in Niger through an integrated multi-sector and multi-partner safety net approach:

September 2017 - February 2018
US\$19.5m
Net Funding Requirements

Source: WFP, 08 September 2017

2017 PROJECT RESOURCES

Special Operation 200792
UN Humanitarian Air Service (UNHAS)



2017 Received: US\$5m | 2017 Requirements: US\$8m

Source: WFP, 08 September 2017

OPERATIONAL CHALLENGES

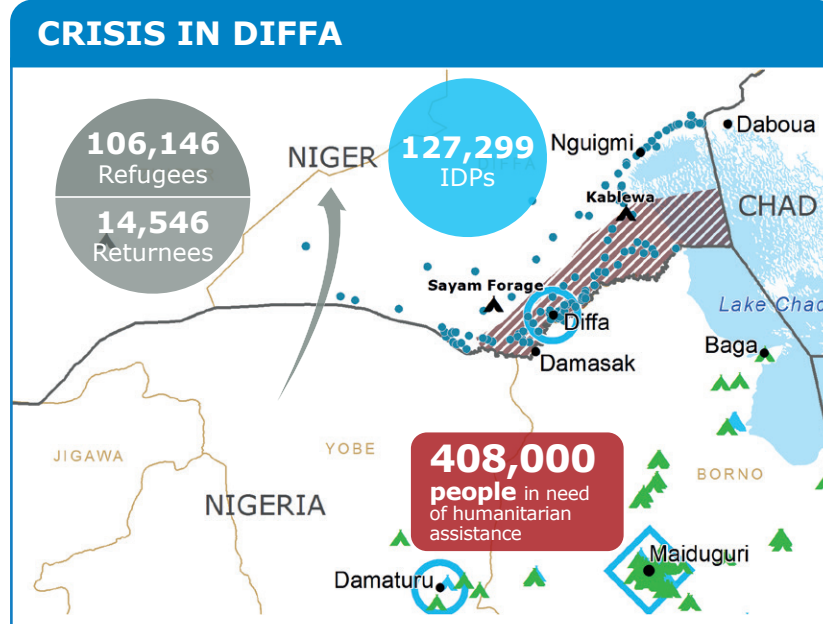
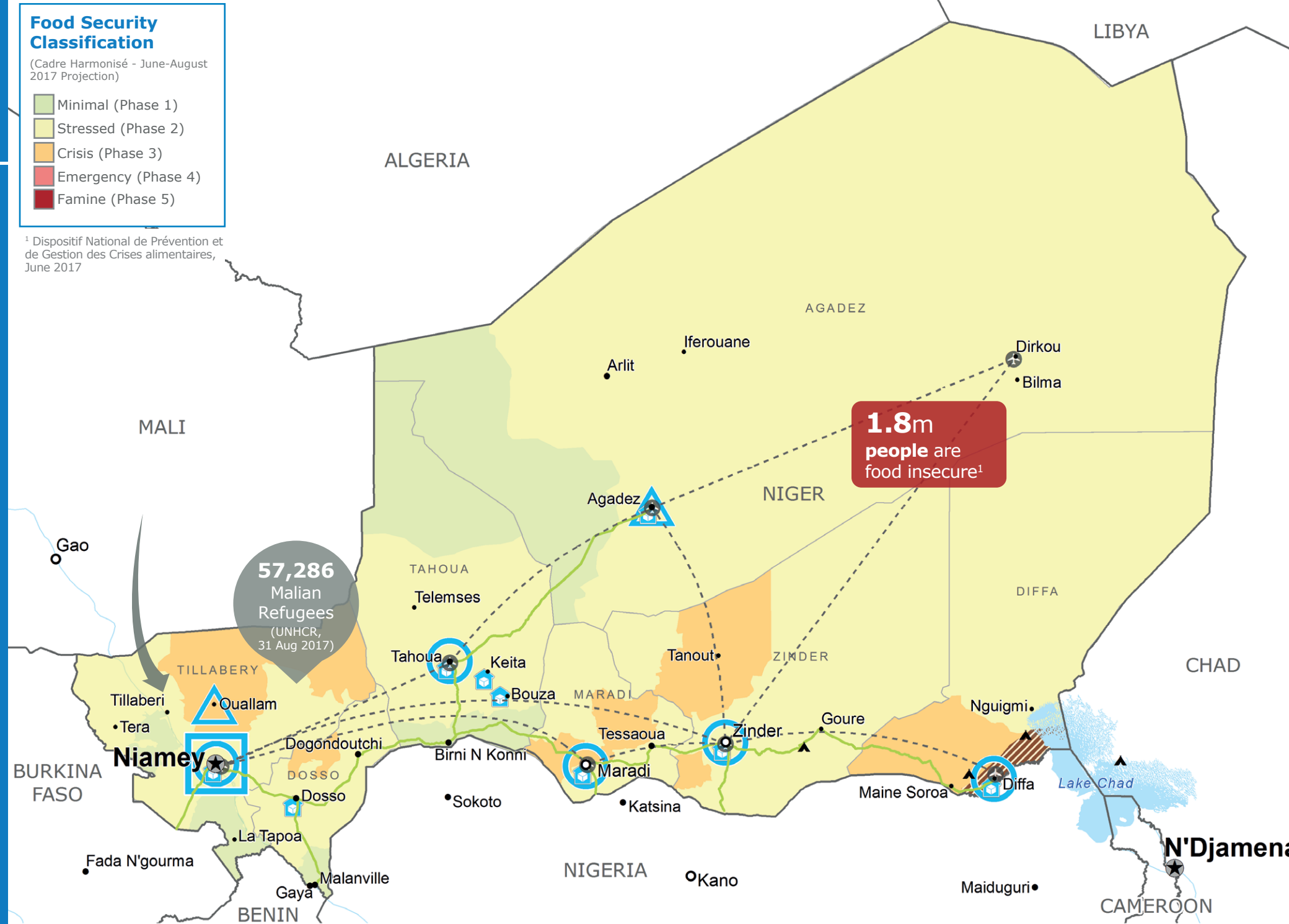
- Insecurity
- Humanitarian Access
- Resources

Food Security Classification

(Cadre Harmonisé - June-August 2017 Projection)

- Minimal (Phase 1)
- Stressed (Phase 2)
- Crisis (Phase 3)
- Emergency (Phase 4)
- Famine (Phase 5)

¹ Dispositif National de Prévention et de Gestion des Crises alimentaires, June 2017

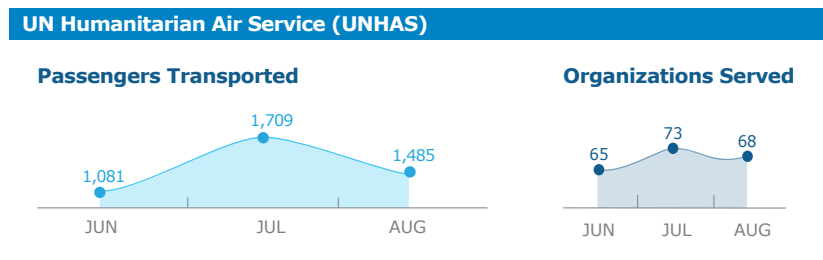


WFP reached 220,000 IDPs, refugees, returnees and vulnerable host population in Diffa in July.

Regional EMOP 200777 - Providing life-saving support to directly affected by insecurity in northern Nigeria (September 2017 - February 2018):

US\$9m Net Funding Requirements

WFP LED & CO-LED CLUSTERS



Sources: WFP, 08 September 2017

- Country Office
- Area Office
- Sub Office
- Field Office
- UNHAS Connection
- Ad-Hoc Fixed-Wing Destination
- Ad-Hoc Rotary-Wing Destination
- Logistics Route
- UNHAS Route
- WFP Warehouse
- Refugee Camp
- Boko Haram Affected Area
- IDPs Site Type
- IDP Camp
- IDP Collective Centre
- IDP Site
- National Capital
- Major Town
- Intermediate Town
- Small Town
- International Boundary
- Region Boundary

Sources: WFP, UNGIWG, GAUL, GLCSC, OCHA, UNHCR
The designations employed and the presentation of material in the map(s) do not imply the expression of any opinion on the part of WFP concerning the legal or constitutional status of any country, territory, city or sea, or concerning the delimitation of its frontiers or boundaries. © World Food Programme 2017

For more information, see the **SITUATION REPORT** and **COUNTRY BRIEF**
<http://www.wfp.org/countries/niger>

2A Regional Emergency Operation 200799
<http://documents.wfp.org/stellent/groups/public/documents/ep/WFP284303.pdf>

Produced by the WFP **Operations Centre (OPSCEN)** jointly with Country Office and Regional Bureau Dakar
This dashboard is based on best available information at the time of production. Future updates may vary as new information becomes available.

