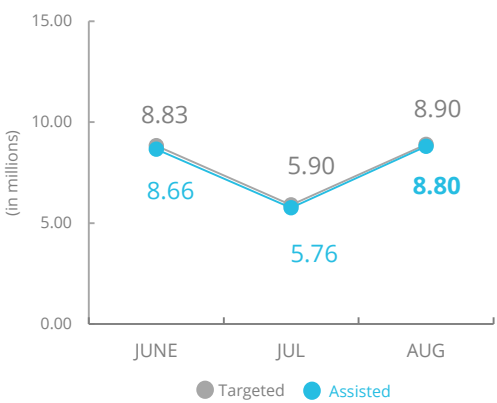


# Yemen

## PEOPLE ASSISTED

Yemen Interim Country Strategic Plan (ICSP)



## OPERATIONAL PROFILE

By Activity (August)

Activity	Percentage	Targeted	Status
General Food Distributions	99%	6,540,500	✓
Commodity Vouchers	97%	1,659,200	✓
Cash Assistance	96%	669,400	✓
School Feeding*	0%	N/A	✗
Treatment of Moderate Acute Malnutrition	83%	467,300	✓
Prevention of Moderate Acute Malnutrition	64%	869,700	✓
Livelihoods and Asset Creation	99%	90,300	✓

\*Schools are closed due to the summer break

## COVID-19 OPERATIONAL IMPACT

**WFP Response**

Staggered distributions, crowd control and hygiene.

Legend: ✓ Ongoing ! Partially Suspended ✗ Suspended

## FUNDING

Yemen Interim Country Strategic Plan (ICSP)

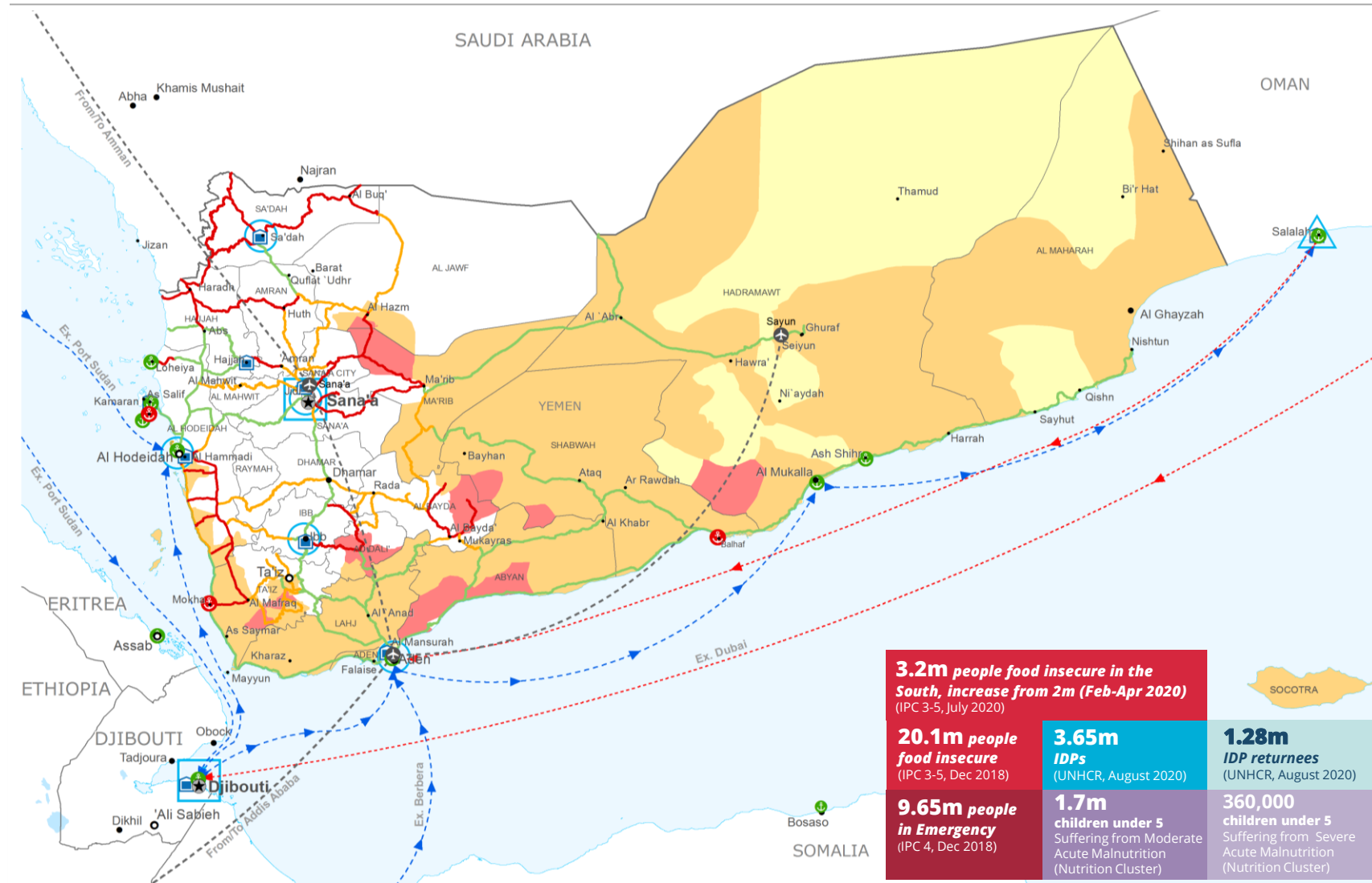
October 2020 – March 2021

# us\$400m

**Net funding requirements**

**2020 LEVEL 3 RESPONSE**  
Requirements: US\$2.5 bn  
Funded: US\$1.4 bn

55%



### Integrated Phase Classification (IPC) June - December 2020

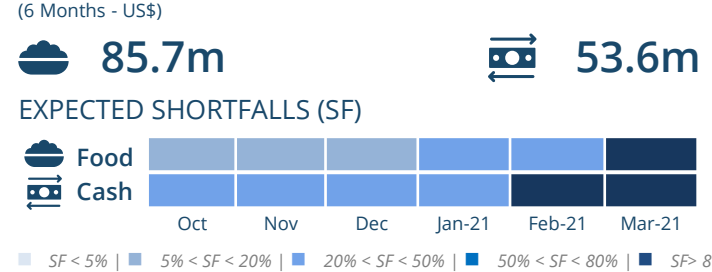
<ul style="list-style-type: none"> <li>Minimal (Phase1)</li> <li>Stressed (Phase2)</li> <li>Crisis (Phase3)</li> <li>Emergency (Phase4)</li> <li>Famine (Phase5)</li> </ul>	<ul style="list-style-type: none"> <li>Country Office</li> <li>Field Office</li> <li>Warehouse</li> </ul>	<ul style="list-style-type: none"> <li>Port Closed</li> <li>Port Operational</li> <li>Port with Restricted Access</li> </ul>	<ul style="list-style-type: none"> <li>UNHAS Connection</li> <li>UNHAS Route</li> <li>Supply Route Open</li> <li>Supply Route Closed</li> </ul>	<ul style="list-style-type: none"> <li>Road Open</li> <li>Road with Restricted Access</li> <li>Road Closed</li> </ul>	<ul style="list-style-type: none"> <li>IDP Camp</li> <li>Refugee Camp</li> <li>Refugee Center</li> </ul>	<ul style="list-style-type: none"> <li>National Capital</li> <li>Major Town</li> <li>Intermediate Town</li> <li>Small Town</li> <li>International Boundary</li> <li>Governorate Boundary</li> </ul>
---	---	--	---	---	--	---

Sources: WFP, UNGIWG, GAUL, GLCSC, OCHA, UNHCR.

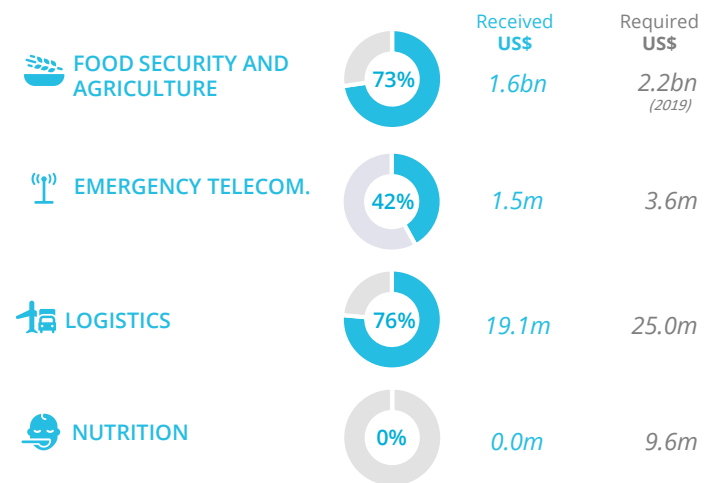
The designations employed and the presentation of material in the map(s) do not imply the expression of any opinion on the part of WFP concerning the legal or constitutional status of any country, territory, city or sea, or concerning the delimitation of its frontiers or boundaries. © World Food Programme 2020.

### AVERAGE MONTHLY FUNDING REQUIREMENTS

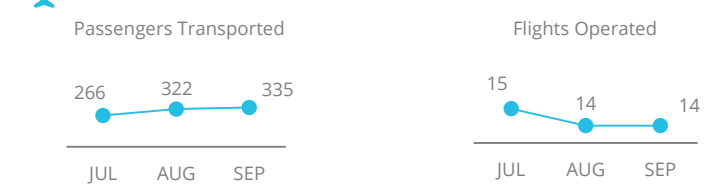
(6 Months - US\$)



### WFP-LED AND SUPPORTED CLUSTERS



### UN HUMANITARIAN AIR SERVICES (UNHAS)



### WFP LEVEL 3 EMERGENCY SINCE 03 JULY 2015

SITUATION REPORT and COUNTRY BRIEF