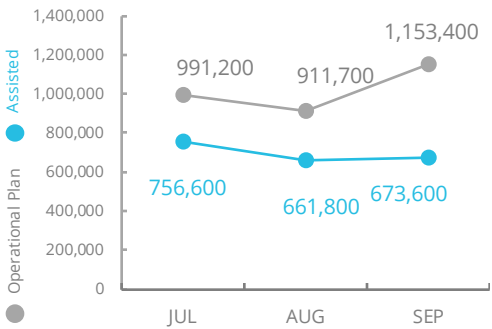
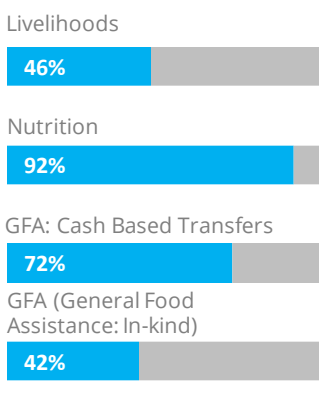


Nigeria

PEOPLE ASSISTED BY WFP



OPERATIONAL PROFILE



COVID-19 Operational Impact

Assisted	Status	WFP Response
67,500	✓	Community-based activities: Ongoing
181,000	✓	Nutrition: Ongoing
393,000	✓	CBT: Ongoing
181,000	✓	Food Assistance: In-kind provided in the northeast

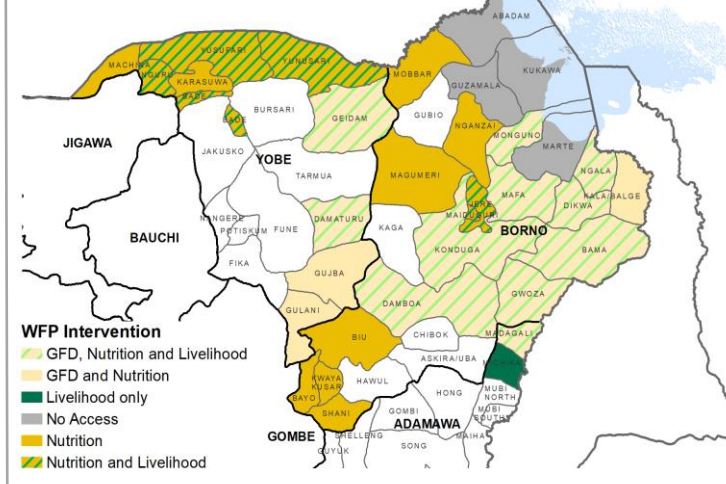
FUNDING

Nigeria Country Strategic Plan
November 2020 – April 2021
Net funding requirements
US\$117.9m

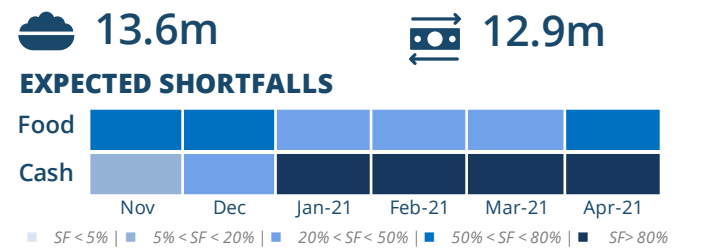
LEVEL 3 RESPONSE
Requirements: USD 174.3m

68%

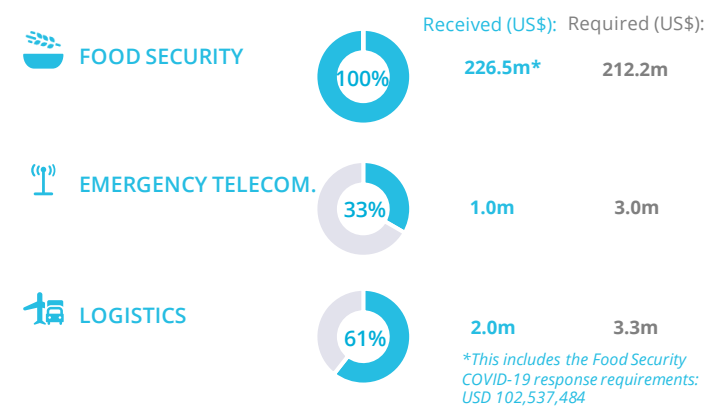
WFP OPERATIONAL PRESENCE



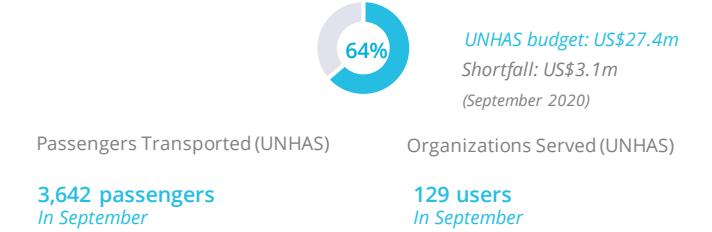
AVERAGE MONTHLY FUNDING REQUIREMENTS (US\$)



WFP-LED AND CO-LED SECTORS

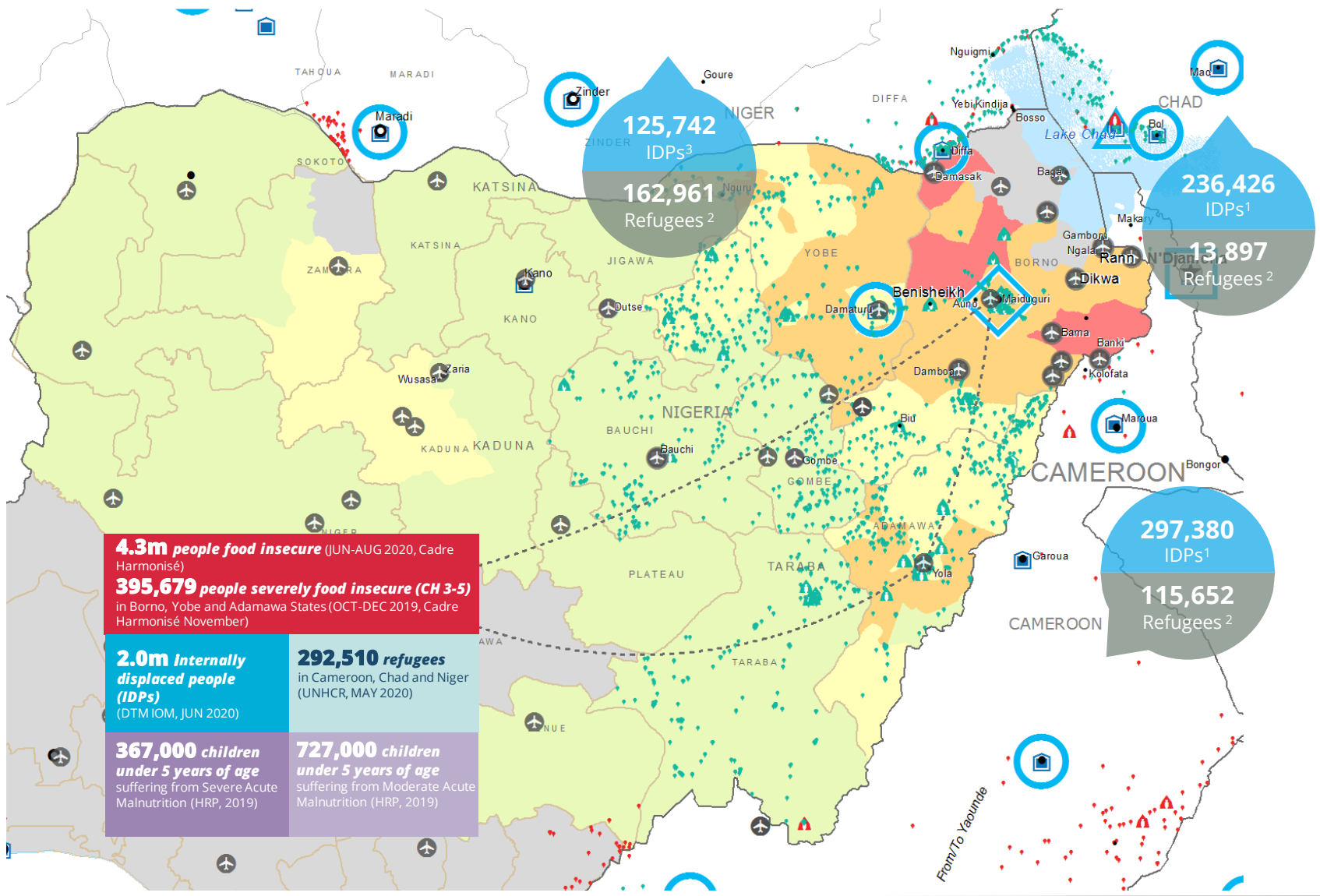


UN HUMANITARIAN AIR SERVICE (UNHAS)



WFP LEVEL 3 EMERGENCY
SINCE 11 AUGUST 2016

SITUATION REPORT and COUNTRY BRIEF



4.3m people food insecure (JUN-AUG 2020, Cadre Harmonisé)
395,679 people severely food insecure (CH 3-5) in Borno, Yobe and Adamawa States (OCT-DEC 2019, Cadre Harmonisé November)

2.0m Internally displaced people (IDPs) in Cameroon, Chad and Niger (DTM IOM, JUN 2020)
292,510 refugees in Cameroon, Chad and Niger (UNHCR, MAY 2020)

367,000 children under 5 years of age suffering from Severe Acute Malnutrition (HRP, 2019)
727,000 children under 5 years of age suffering from Moderate Acute Malnutrition (HRP, 2019)

- CH Food Security Classification: No data, Minimal (Phase 1), Stressed (Phase 2), Crisis (Phase 3), Emergency (Phase 4), Famine (Phase 5)
- Country Office, Area Office, Sub Office, Field Office
- UNHAS Connection: Ad-Hoc Fixed-Wing Destination, Ad-Hoc Rotary-Wing Destination, Warehouse
- IDP Camp, IDP Center, IDP Location
- Refugee Camp, Refugee Center, Refugee Location
- National Capital, Major Town, Intermediate Town, Small town
- International Boundary, Province boundary, River

Sources: WFP, UNGIWG, GAUL, GLCSC, OCHA, UNHCR.
The designations employed and the presentation of material in the map(s) do not imply the expression of any opinion on the part of WFP the delimitation of its frontiers or boundaries.
© World Food Programme 2020.