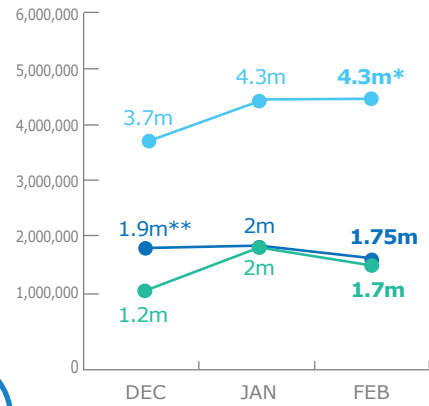


PEOPLE ASSISTED



* Cash pilot implementation targeting 588,000 people in the Somali Region was delayed and are distributed during Jan/Feb
 ** Target reduced by 500,000 due to funding shortfalls
 Ethiopia: Figures exclude the Nutrition caseload of approx. 400,000 that overlaps with the emergency Relief caseload in the Somali Region.

Source: WFP, 27 March 2018

OPERATIONAL PROFILE



RESPONSE ACTIVITIES

- General Food Distributions Somalia Kenya Ethiopia
- Cash-Based Transfers Somalia Kenya Ethiopia
- Food Assistance for Assets Somalia Kenya Ethiopia
- Nutrition Somalia Kenya Ethiopia
- School Meals Somalia Kenya
- Capacity Strengthening Kenya Ethiopia

FUNDING

NET FUNDING REQUIREMENTS

- Somalia**
US\$ **100m**
April 2018 - September 2018
Net Funding Requirements
- Ethiopia**
US\$ **178m***
March 2018 - August 2018
Net Funding Requirements
- Kenya**
US\$ **18m**
April 2018 - September 2018
Net Funding Requirements

Note: Includes all Protracted Relief & Recovery Operations, Country Programme and Special Operations for the drought response across Ethiopia, Kenya and Somalia.
 *Includes WFP Relief, PSNP, Nutrition and Refugee requirements

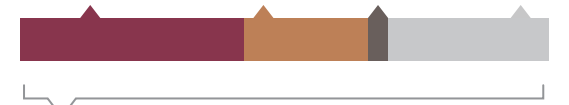
Source: WFP, 29 March 2018

2017/2018 HUMANITARIAN RESPONSE PLANS & CLUSTER REQUIREMENTS



SOMALIA HUMANITARIAN RESPONSE PLAN 2018

- FOOD SECURITY US\$ **632m**
- NUTRITION US\$ **254m**
- LOGISTICS US\$ **10m**
- OTHERS US\$ **540m**

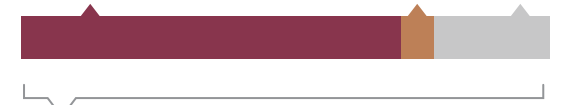


TOTAL APPEAL US\$1.5 billion **15%** Received: US\$228m

Source: OCHA, 27 March 2018

ETHIOPIA HUMANITARIAN REQUIREMENTS DOCUMENT 2018

- FOOD SECURITY US\$ **1,036m**
- NUTRITION US\$ **198m**
- OTHERS US\$ **424m**

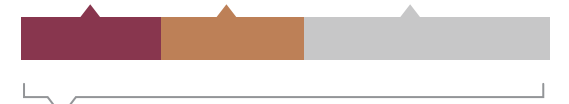


TOTAL APPEAL US\$1.6 billion **31%** Received: US\$508b

Source: OCHA, 14 March 2018

KENYA FLASH APPEAL 2017

- FOOD SECURITY US\$ **39.3m**
- NUTRITION US\$ **43.2m**
- OTHERS US\$ **83.2m**



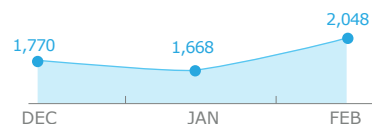
TOTAL APPEAL US\$205 million **60%** Received: US\$123m

Source: OCHA, 15 February 2018

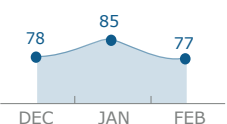
UN Humanitarian Air Service (UNHAS)

SOMALIA

Passengers Transported

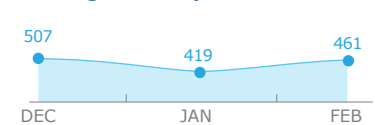


Organizations Supported

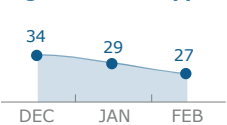


ETHIOPIA

Passengers Transported



Organizations Supported

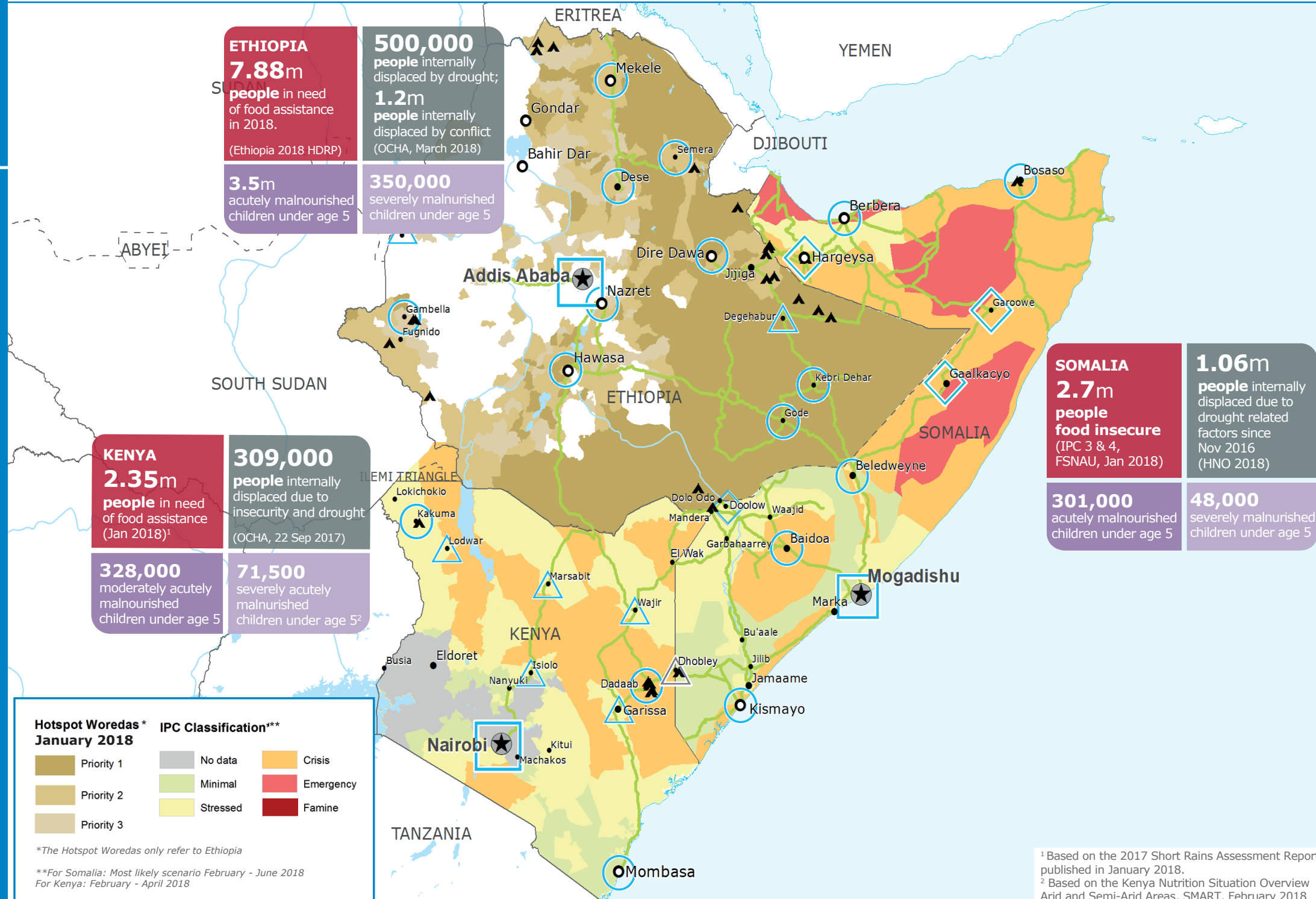


Source: WFP, 22 February 2018

WFP LEVEL 2 EMERGENCY SINCE 06 FEBRUARY 2017

For more information, see the **SITUATION REPORT** and **COUNTRY BRIEF** www.wfp.org

Produced by the WFP **Operations Centre (OPSCEN)** jointly with Country Offices and Regional Bureau Nairobi



- Country Office
- Sub Office
- National Capital
- Road Supply Route
- Area Office
- Field Office
- Major Town
- Refugee Camp
- Presence Office
- Intermediate Town
- International Boundary
- Small Town
- Undetermined Boundary

Sources: WFP, UNGIWG, GAUL, GLCSC, UNHCR
 The designations employed and the presentation of material in the map(s) do not imply the expression of any opinion on the part of WFP concerning the legal or constitutional status of any country, territory, city or sea, or concerning the delimitation of its frontiers or boundaries. © World Food Programme 2018

This dashboard is based on best available information at the time of production. Future updates may vary as new information becomes available.

