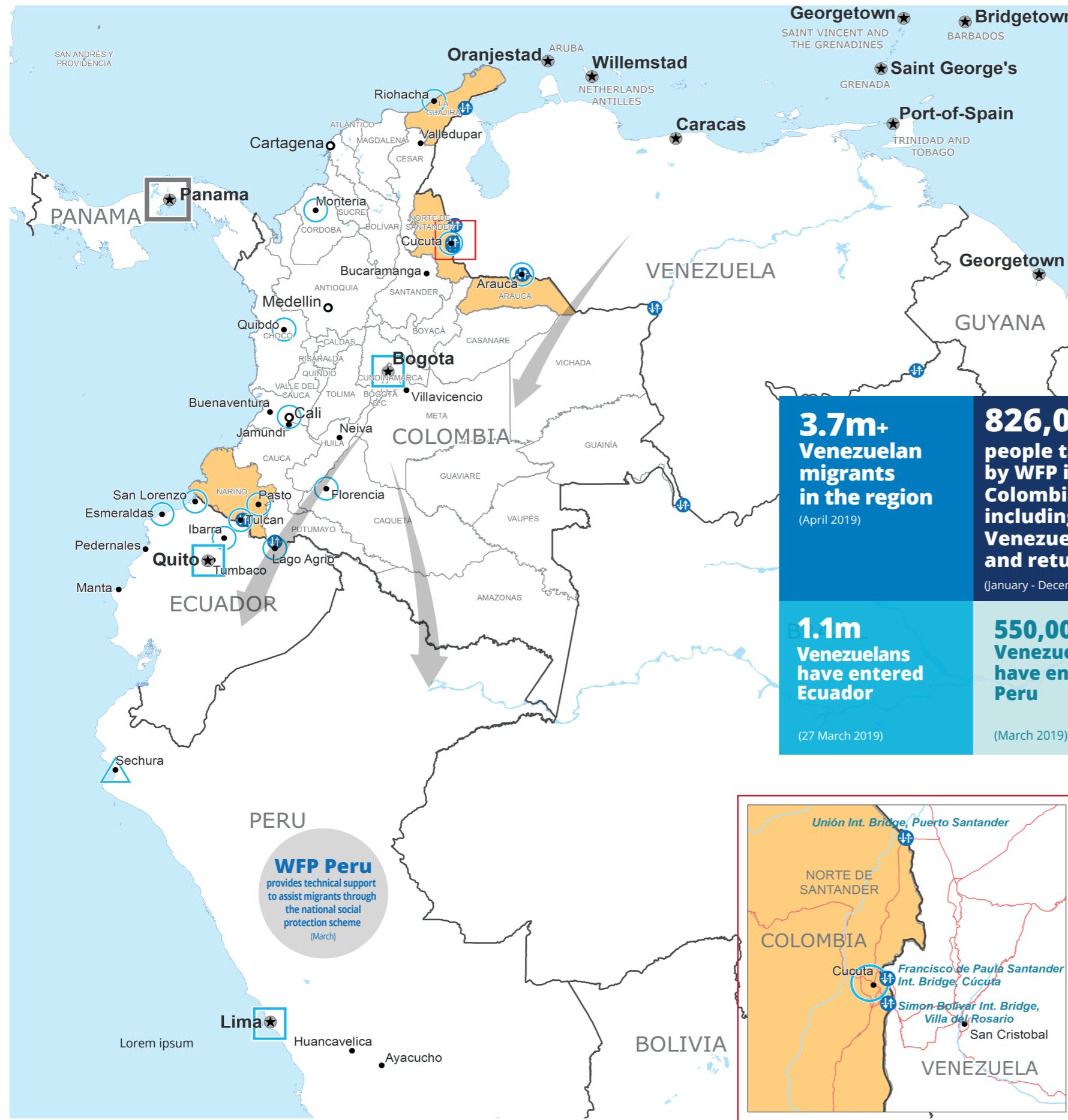


Colombia - Venezuela Border Crisis



3.7m+ Venezuelan migrants in the region
(April 2019)

826,000 people targeted by WFP in Colombia including 660,600 Venezuelan migrants and returnees
(January - December 2019)

1.1m Venezuelans have entered Ecuador
(27 March 2019)

550,000 Venezuelans have entered Peru
(March 2019)

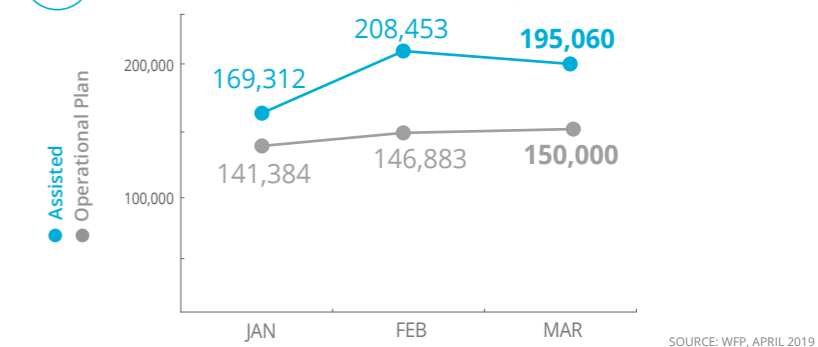
WFP Peru provides technical support to assist migrants through the national social protection scheme (March)

- Regional Bureau
- Country Office
- Sub Office
- Field Office
- WFP Operational Presence for L2 Response
- Intermediate Town
- Small Town
- Border Crossing Point
- International Boundary
- Department Boundary
- River
- Surface Waterbody

Sources: WFP, UNGIWG, GAUL, GLCSC, OCHA, UNHCR, Colombian Migration Authority, Ministry of Interior - Ecuador. The designations employed and the presentation of material in the map(s) do not imply the expression of any opinion on the part of WFP concerning the legal or constitutional status of any country, territory, city or sea, or concerning the delimitation of its frontiers or boundaries.
© World Food Programme 2019.

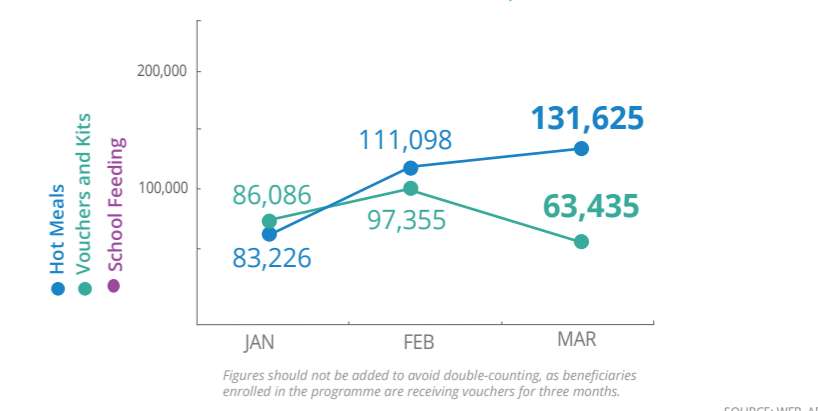
PEOPLE ASSISTED BY WFP COLOMBIA

SO 2: WFP Colombia-Venezuela Border Crisis Response



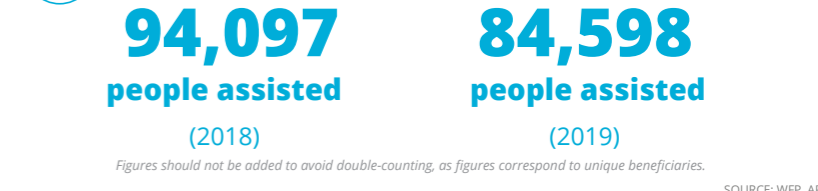
WFP COLOMBIA OPERATIONAL PROFILE

by activity
SO 2: WFP Colombia-Venezuela Border Crisis Response

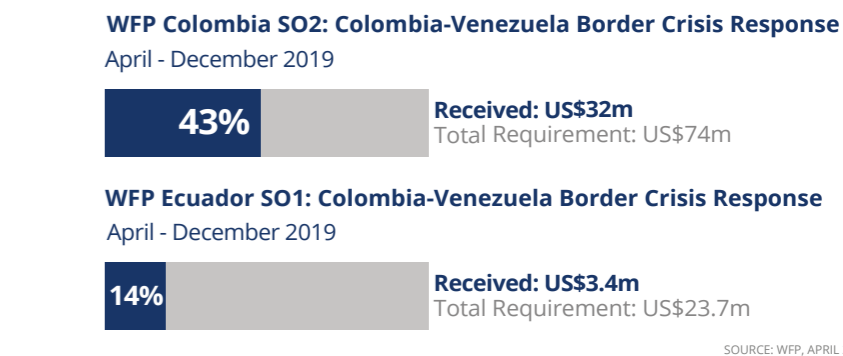


PEOPLE ASSISTED BY WFP ECUADOR

SO 1: WFP Colombia-Venezuela Border Crisis Response



FUNDING



COOPERATING PARTNERS

WFP Colombia-Venezuela Border Crisis Response



WFP LEVEL 2 EMERGENCY

SINCE 30 March 2018

For more information, see the latest SITUATION REPORT and COUNTRY BRIEFS
www.wfp.org/countries/colombia