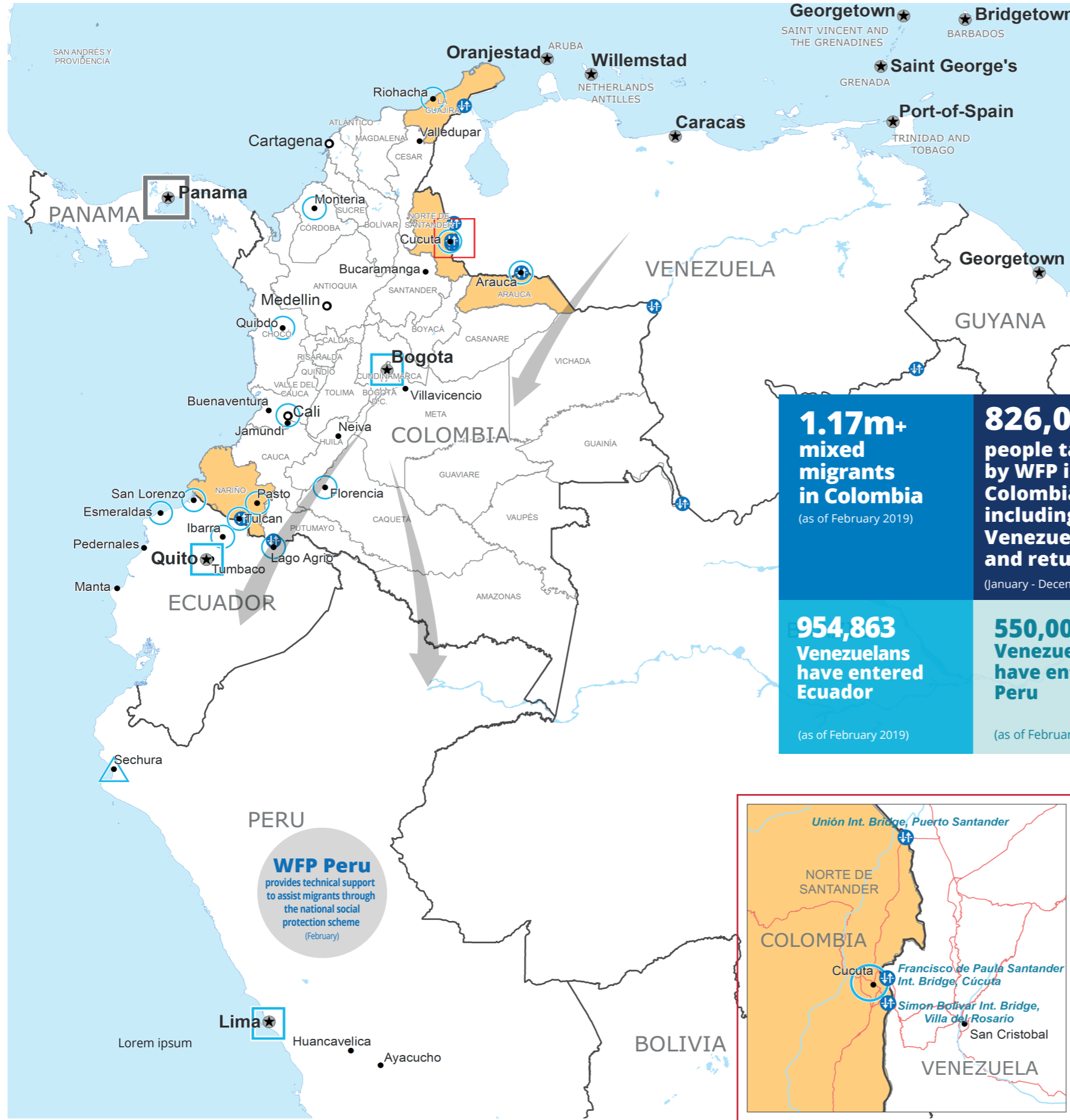


Colombia - Venezuela Border Crisis



1.17m+ mixed migrants in Colombia (as of February 2019)

826,000 people targeted by WFP in Colombia including 660,600 Venezuelan migrants and returnees (January - December 2019)

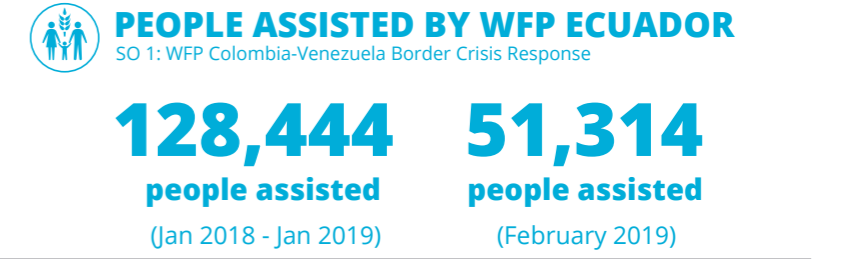
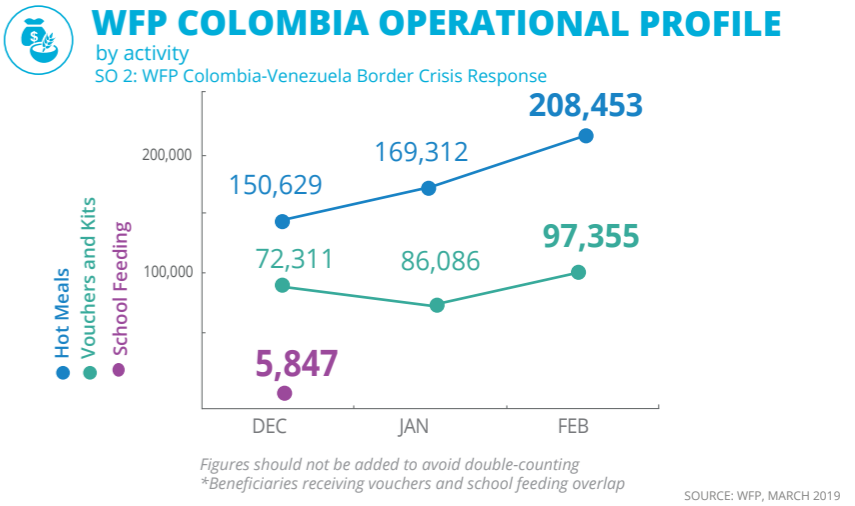
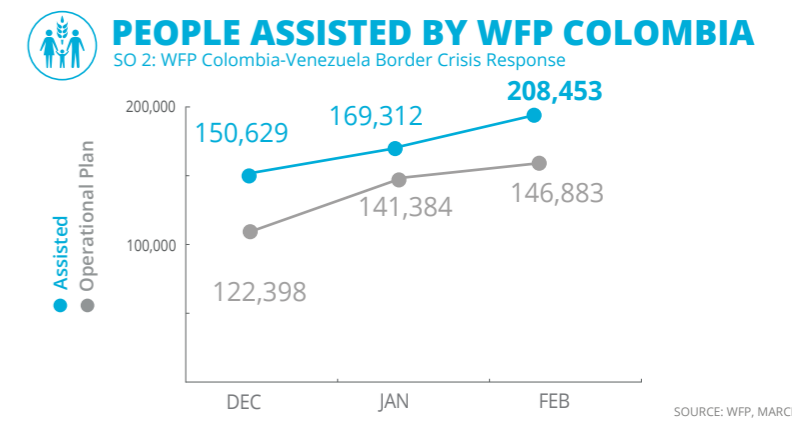
954,863 Venezuelans have entered Ecuador (as of February 2019)

550,000 Venezuelans have entered Peru (as of February 2019)

WFP Peru provides technical support to assist migrants through the national social protection scheme (February)

- Regional Bureau
- Country Office
- Sub Office
- Field Office
- WFP Operational Presence for L2 Response
- Intermediate Town
- Small Town
- Border Crossing Point
- International Boundary
- Department Boundary
- River
- Surface Waterbody

Sources: WFP, UNGIWG, GAUL, GLCSC, OCHA, UNHCR, Colombian Migration Authority, Ministry of Interior - Ecuador. The designations employed and the presentation of material in the map(s) do not imply the expression of any opinion on the part of WFP concerning the legal or constitutional status of any country, territory, city or sea, or concerning the delimitation of its frontiers or boundaries. © World Food Programme 2019.



WFP LEVEL 2 EMERGENCY
SINCE 30 March 2018

For more information, see the latest SITUATION REPORT and COUNTRY BRIEFS
www.wfp.org/countries/colombia

2A Colombia Country Strategic Plan (2017-2021)
<http://documents.wfp.org/stellent/groups/public/documents/ep/WFP284303.pdf>