



World Food Programme

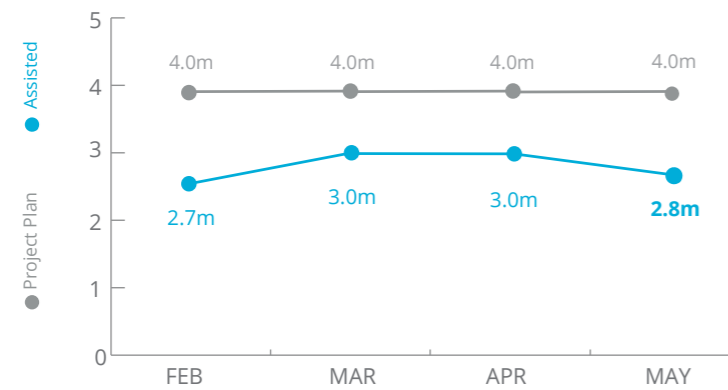
Syria



PEOPLE ASSISTED

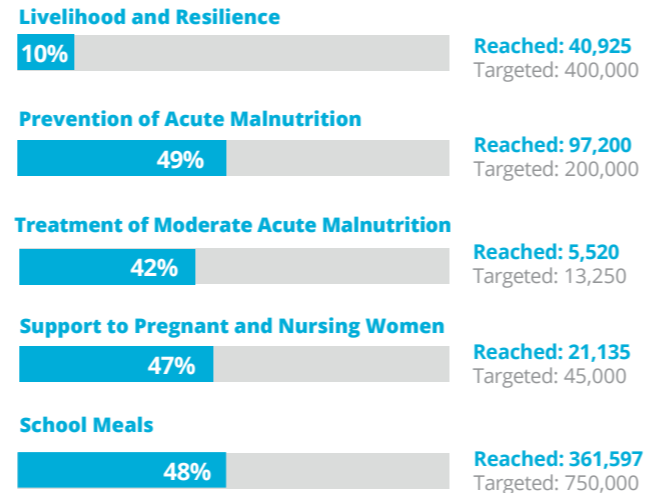
Transitional Interim Country Strategic Plan (T-ICSP)

Through Food Distributions



SOURCE: WFP, 22 JUNE 2018

OTHER ACTIVITIES MAY 2018



FUNDING

Syria Transitional Interim Country Strategic Plan (T-ICSP)

July - December 2018

US\$248.5m

Net funding requirement

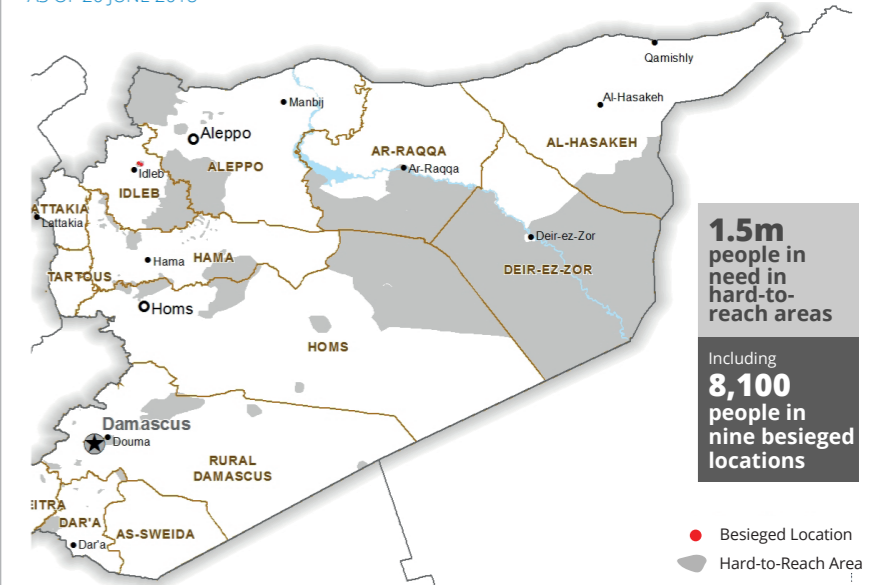
2018 LEVEL 3 RESPONSE



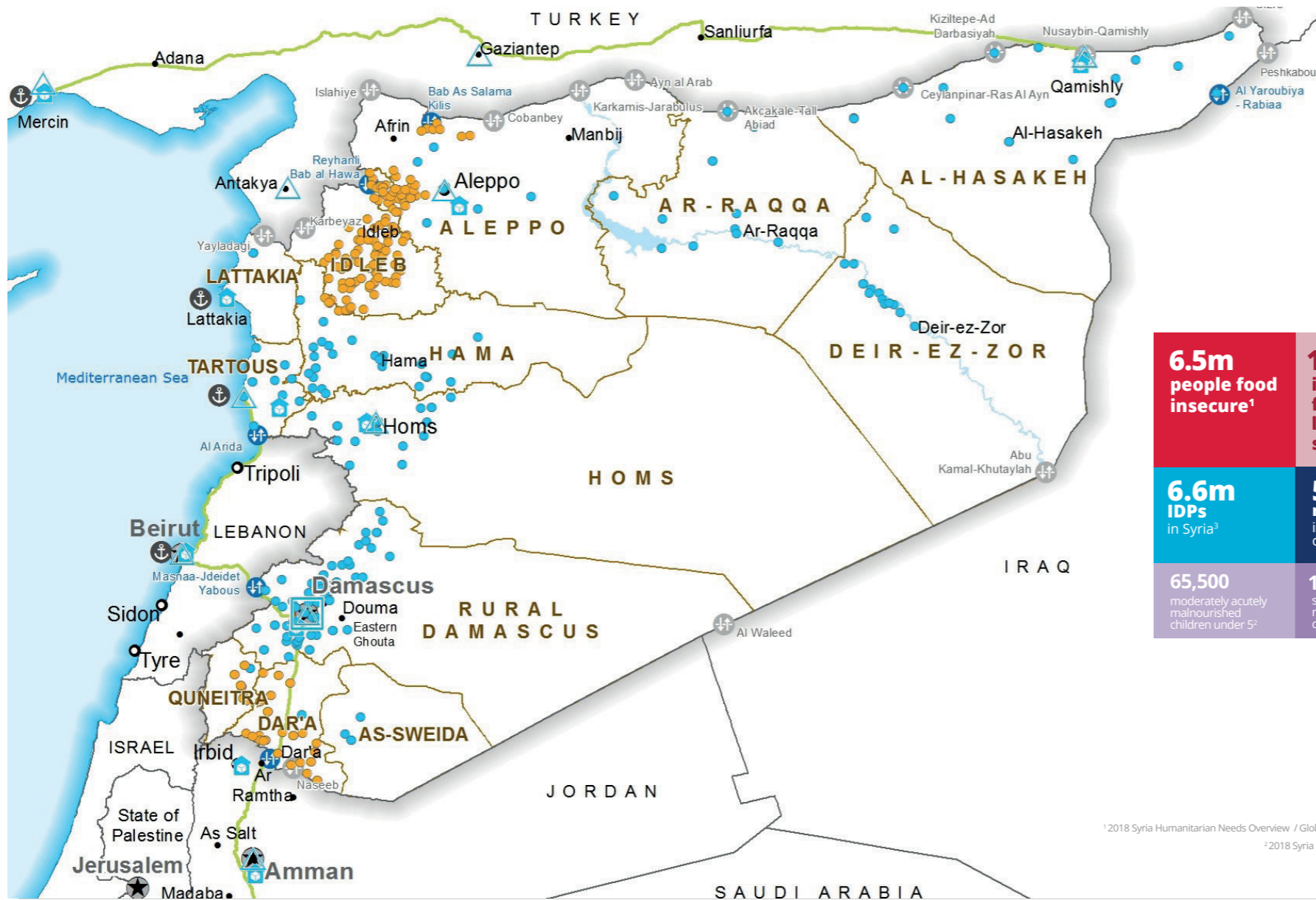
SOURCE: WFP, 22 JUNE 2018

HARD-TO-REACH AND BESIEGED AREAS

AS OF 20 JUNE 2018



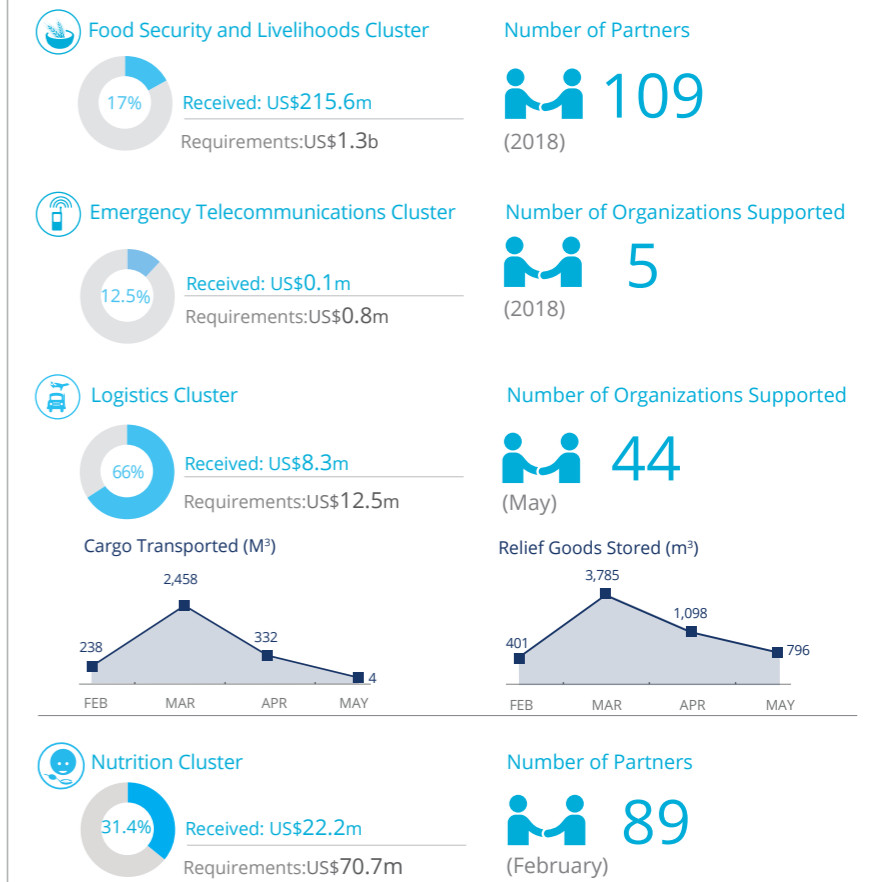
SOURCE: OCHA, 20 JUNE 2018



| | |
|---|---|
| 6.5m people food insecure ¹ | 10.5m in need of food and livelihood support ² |
| 6.6m IDPs in Syria ³ | 5.6m refugees in neighboring countries ⁴ |
| 65,500 moderately acutely malnourished children under 5 ² | 18,700 severely acutely malnourished children under 5 ² |

¹2018 Syria Humanitarian Needs Overview / Global Report on Food Crises 2018
²2018 Syria Humanitarian Needs Overview
³OCHA, 24 April 2018
⁴UNHCR, 23 June 2018

WFP LED & SUPPORTED CLUSTERS



SOURCES: OCHA FTS, 27 JUNE 2018; CLUSTERS, MAY 2018

WFP LEVEL 3 EMERGENCY SINCE 14 DECEMBER 2012

IASC LEVEL 3 EMERGENCY SINCE 15 JANUARY 2013

For more information, see the SITUATION REPORT and COUNTRY BRIEF www.wfp.org/countries/syria

2A Syria Transitional Interim Country Strategic Plan
<http://documents.wfp.org/stellent/groups/public/documents/ep/WFP284303.pdf>

Produced by the WFP Operations Centre (OPSCEN) jointly with Country Office and Regional Bureau Dakar. This dashboard is based on best available information at the time of production. Future updates may vary as new information becomes available.

- Food Distribution Points (FDP)** (May 2018)
 - FDP Regular Deliveries
 - FDP Cross-line Deliveries
 - FDP Cross-border Deliveries
- Country Office
- Sub Office
- Field Office
- Warehouse
- Road Supply Route
- Open Border Crossing Point
- Sporadically Open Border Crossing Point
- Port
- National Capital
- Major Town
- Intermediate Town
- International Boundary
- Governor Boundary
- River
- Surface Waterbody

Sources: OCHA, WFP, GLSC, UNGIWG, UNHCR, Geonames.

The designations employed and the presentation of material in the map(s) do not imply the expression of any opinion on the part of WFP concerning the legal or constitutional status of any country, territory, city or sea, or concerning the delimitation of its frontiers or boundaries. © World Food Programme 2018.