



World Food Programme

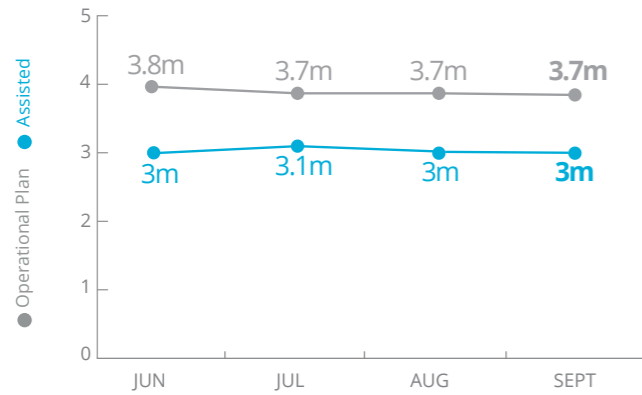
Emergency Dashboard | October 2018

South Sudan



PEOPLE ASSISTED

Emergency Operation 200859 and Protracted Relief and Recovery Operation 200572

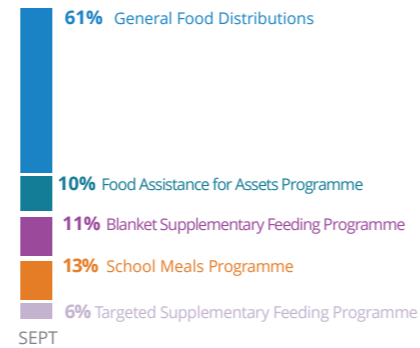


SOURCE: WFP, 24 OCTOBER 2018



OPERATIONAL PROFILE

By activity



Percentages of activities may include overlaps, i.e. beneficiaries that have been assisted with two or more different activities.

By gender



SOURCE: WFP, 24 OCTOBER 2018



FUNDING

South Sudan Interim Country Strategic Plan (ICSP)

November 2018 - April 2019

US\$566.6m

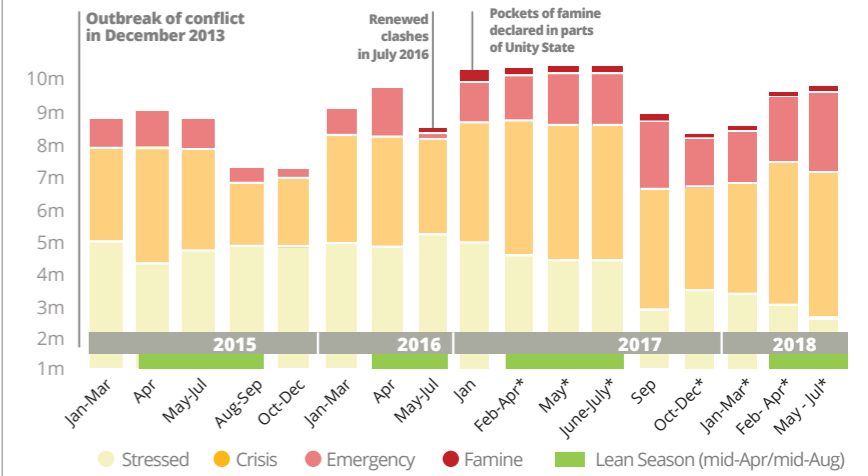
Net funding requirement

2018 LEVEL 3 RESPONSE

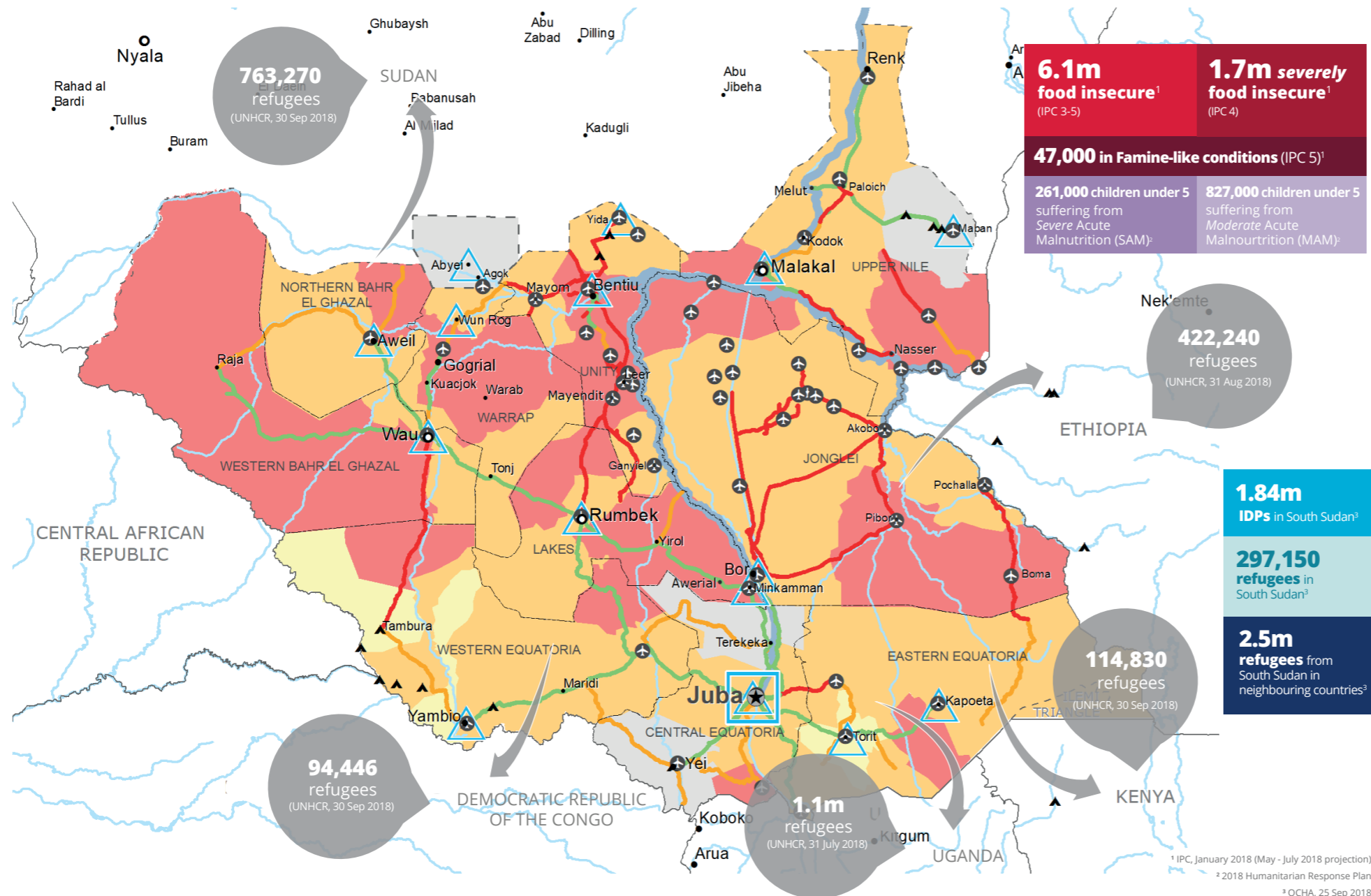


SOURCE: WFP, 25 OCTOBER 2018

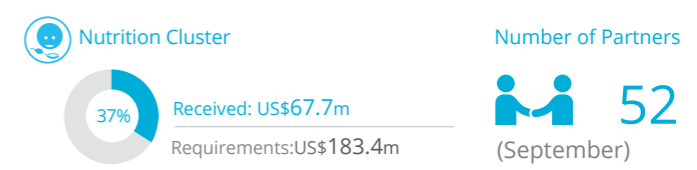
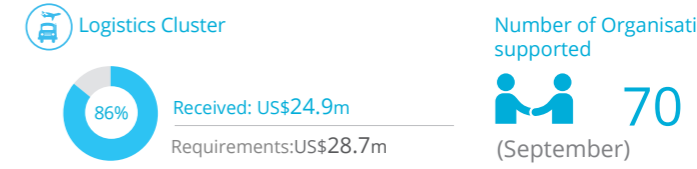
HISTORICAL FOOD INSECURITY (IPC)



* PROJECTIONS; SOURCE: IPC, FEBRUARY 2018

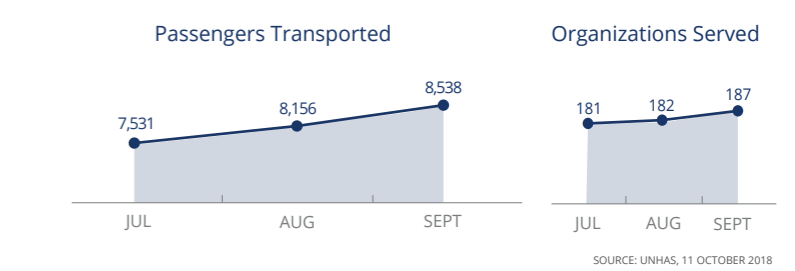


WFP-LED AND SUPPORTED CLUSTERS



SOURCES: OCHA FTS, 28 AUGUST 2018; CLUSTERS, 11 OCTOBER 2018

UN Humanitarian Air Service (UNHAS)



SOURCE: UNHAS, 11 OCTOBER 2018

WFP LEVEL 3 EMERGENCY SINCE 23 DECEMBER 2013

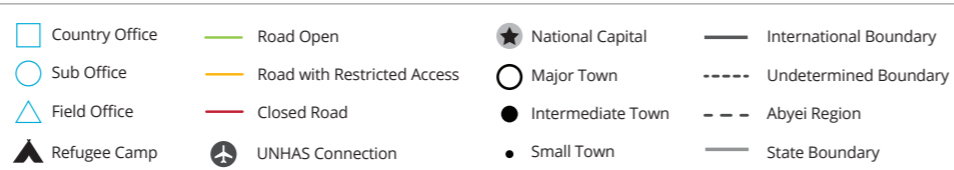
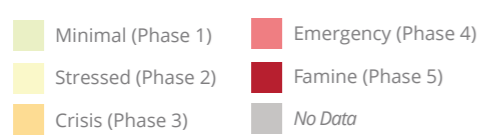
IASC LEVEL 3 EMERGENCY SINCE 1 JULY 2015

For more information, see the SITUATION REPORT and COUNTRY BRIEF www.wfp.org/countries/south-sudan

2A South Sudan Interim Country Strategic Plan <http://documents.wfp.org/stellent/groups/public/documents/ep/WFP284303.pdf>

Produced by the WFP Operations Centre (OPSCEN) jointly with Country Office and Regional Bureau Nairobi. This dashboard is based on best available information at the time of production. Future updates may vary as new information becomes available.

IPC Food Security Classification September 2018



Sources: WFP, UNGIWG, GAUL, GLCSC, OCHA, UNHCR, Access Constraints Map, 19 October 2018. The designations employed and the presentation of material in the map(s) do not imply the expression of any opinion on the part of WFP concerning the legal or constitutional status of any country, territory, city or sea, or concerning the delimitation of its frontiers or boundaries. © World Food Programme 2018.

SAVING LIVES
CHANGING LIVES