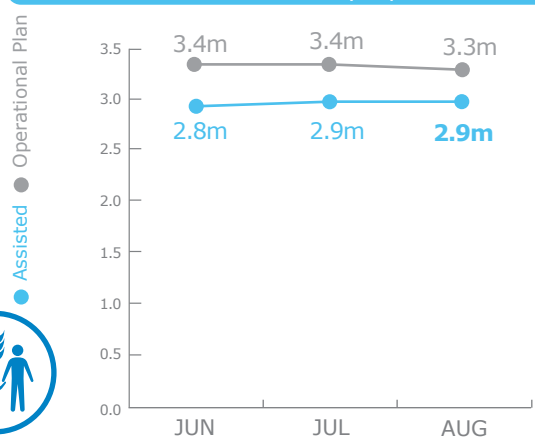


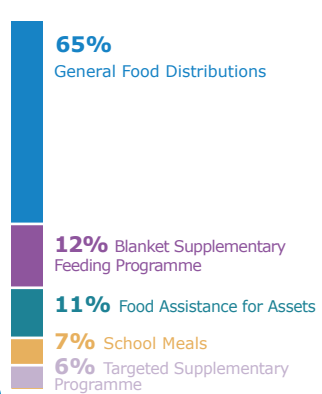
PEOPLE ASSISTED

Emergency Operation 200859 and Protracted Relief & Recovery Operation 200572



OPERATIONAL PROFILE

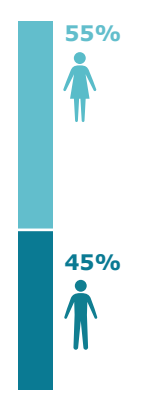
BY ACTIVITY



AUG Assisted

Percentages of activities may include overlaps, ie. beneficiaries that have been assisted with two or more different activities.

BY GENDER



AUG Assisted

FUNDING

Emergency Operation 200859 and Protracted Relief & Recovery Operation 200572

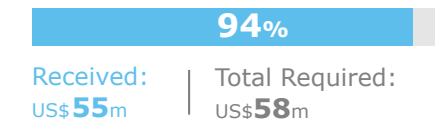


October 2017 - March 2018
US\$159m
Net Funding Requirements

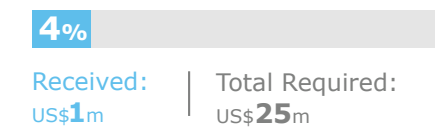
2017 operations **67% funded**

2017 FUNDING REQUIREMENTS

Special Operation 201029
UN Humanitarian Air Service (UNHAS)

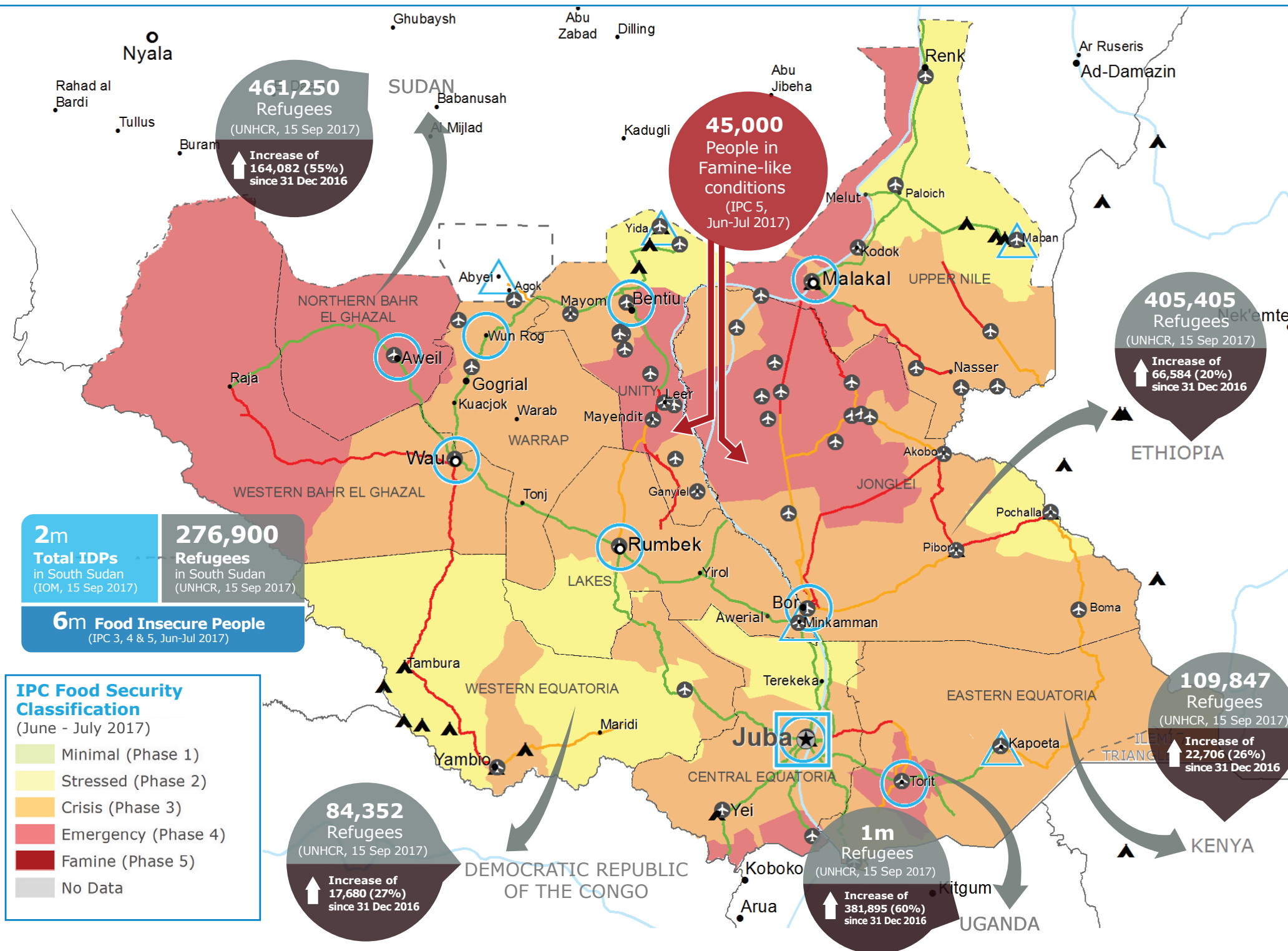


Special Operation 200379
Feeder Road Construction

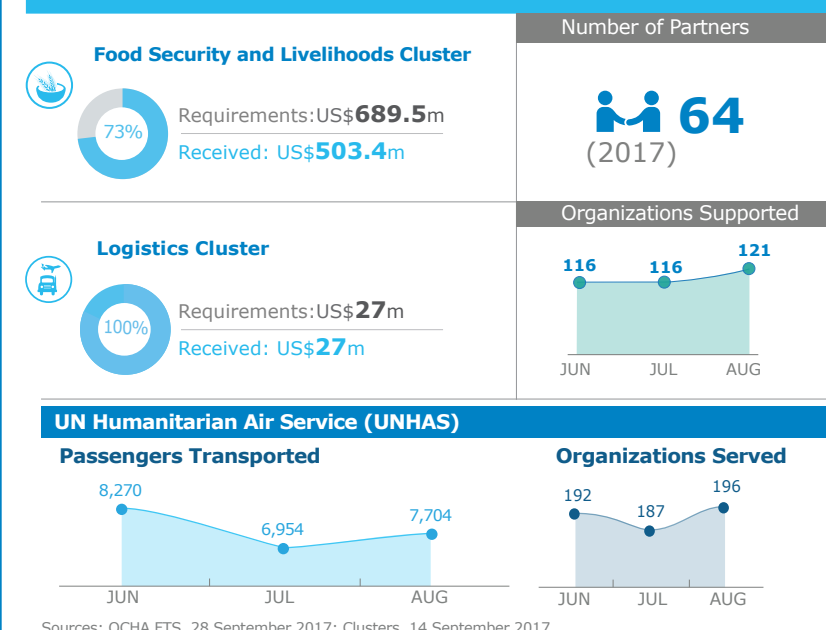


Source: WFP, 28 September 2017

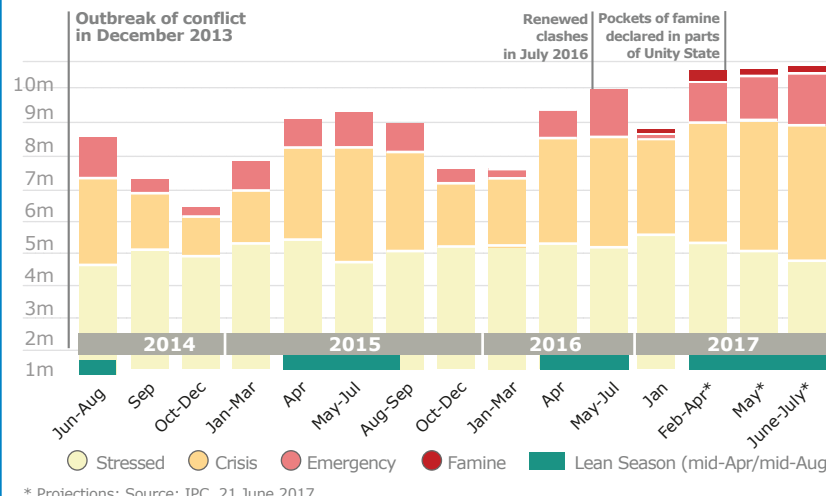
Source: WFP, 28 September 2017



WFP-LED & CO-LED CLUSTERS



HISTORICAL FOOD INSECURITY (IPC)



WFP LEVEL 3 EMERGENCY SINCE 23 DECEMBER 2013

For more information, see the **SITUATION REPORT** and **COUNTRY BRIEF** www.wfp.org/countries/south-sudan

2A EMOP 200859
documents.wfp.org/stellent/groups/public/documents/ep/WFP284303.pdf

Produced by the WFP **Operations Centre (OPSCEN)** jointly with Country Office and Regional Bureau Nairobi
This dashboard is based on best available information at the time of production. Future updates may vary as new information becomes available.



- Country Office
- Sub Office
- Field Office
- Road Open
- Closed Road
- Road with Limited Access
- Refugee / IDP Camp
- UNHAS Connection
- National Capital
- Major Town
- Intermediate Town
- Small Town
- International Boundary
- Undetermined Boundary
- Abyei Region
- State Boundary

Sources: WFP, UNGIWG, GAUL, GLCSC, OCHA, UNHCR, IPC

The designations employed and the presentation of material in the map(s) do not imply the expression of any opinion on the part of WFP concerning the legal or constitutional status of any country, territory, city or sea, or concerning the delimitation of its frontiers or boundaries.
© World Food Programme 2017