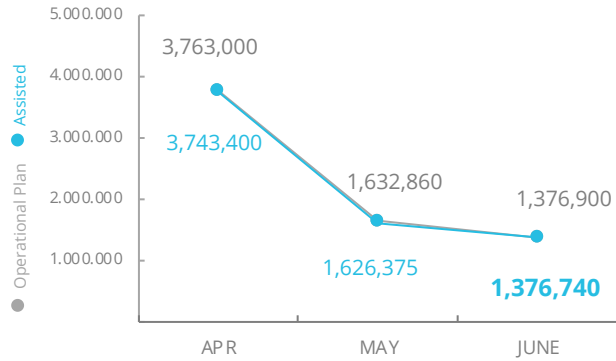




PEOPLE ASSISTED

Zimbabwe Country Strategic Plan (CSP)



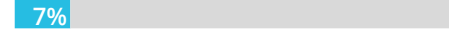
OPERATIONAL PROFILE

By Transfer Modality

General Food Distribution (In-Kind)



General Food Distribution (Cash/Voucher)



COVID-19 OPERATIONAL IMPACT

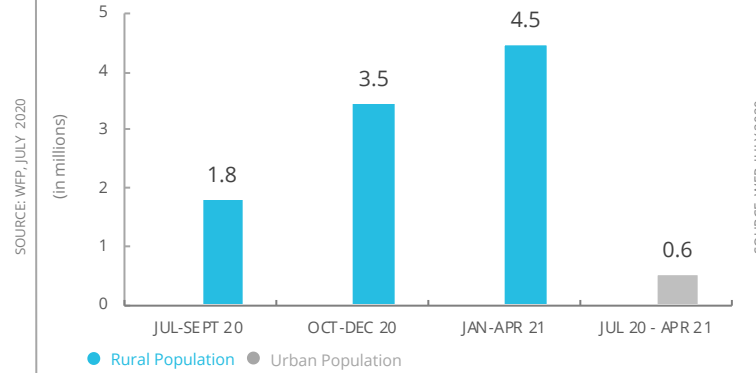
Status	WFP Response adjusted
✓	Mandatory hygiene measures at Food Distribution Points (FDPs)
✓	Social distancing, maximum of 50 people at FDPs
✓	Extended distribution timelines

✓ Ongoing ⚠ Partially Suspended ✗ Suspended



LEAN SEASON ASSISTANCE (2020/21)

Targeted Population



FUNDING

Zimbabwe Lean Season Scale-Up

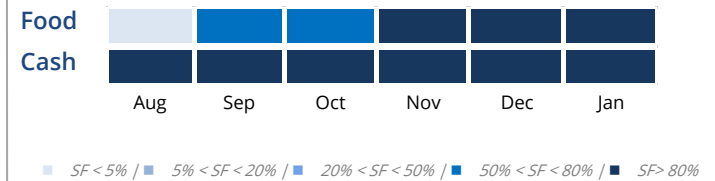
Net funding requirements
August 2020 - January 2021

US\$262m

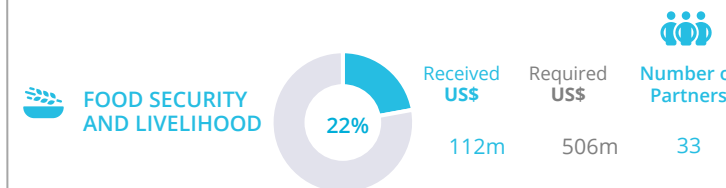
AVERAGE MONTHLY FUNDING REQUIREMENTS (US\$)



EXPECTED SHORTFALLS



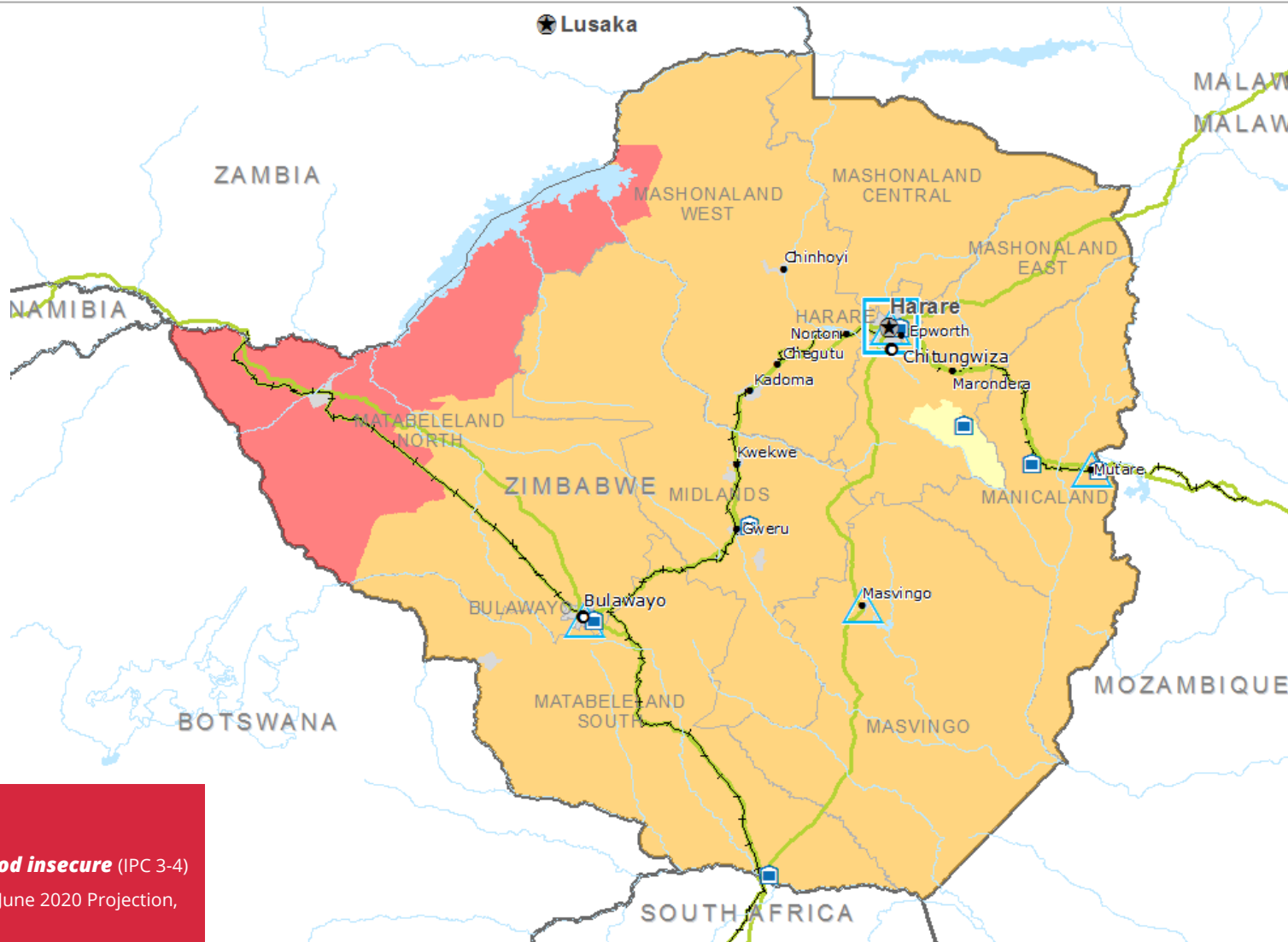
WFP-LED AND SUPPORTED CLUSTERS



SOURCE: WFP, JULY 2020

WFP LEVEL 2 EMERGENCY SINCE 28 NOVEMBER 2019

SITUATION REPORT and COUNTRY BRIEF



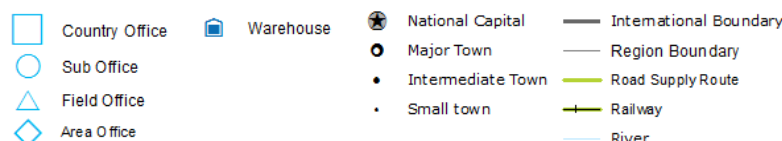
4.3m

people food insecure (IPC 3-4)

(February -June 2020 Projection, ZimVAC)

IPC Food Security Classification

February - June 2020



Sources: WFP, UNGIWG, GAUL, GLCSC, OCHA, UNHCR, IPC.

The designations employed and the presentation of material in the map(s) do not imply the expression of any opinion on the part of WFP concerning the legal or constitutional status of any country, territory, city or sea, or concerning the delimitation of its frontiers or boundaries. © World Food Programme 2020.